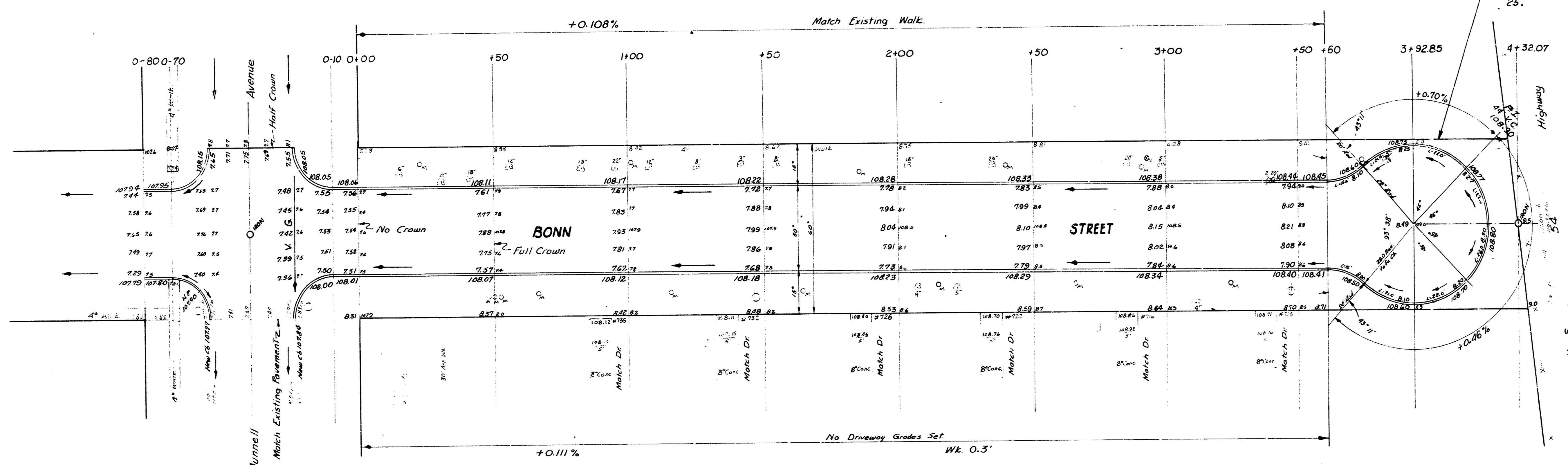


BM - 10734 Iron in thimble & Bonn & NL M^c Cormick
 BM - 10787 6" in Globe N curb Munnell & EL Bonn



NOTICE TO CONTRACTOR & ENGINEER
 Remove only enough walk to allow
 construction of Cul-de-Sac. Approx.
 25'.

CH. MILLS
 GRADERS
 CIVIL ENGR.

TIES TO IRON - & Bonn & Munnell
 54.81' NL to 6" in 1936 N curb
 35.40' SE to 6" in 1936 S curb

Handwritten notes:
 Elevation table
 11.12.52
 11.12.52
 11.12.52
 11.12.52

BONN STREET
 SL Munnell to SL U.S. 54 Hwy.
 30' Conc f Cb.
 CITY OF WICHITA, KANSAS
 B. E. SMITH CITY ENGINEER
 APRIL 1958 PROJ. NO. C17-73

