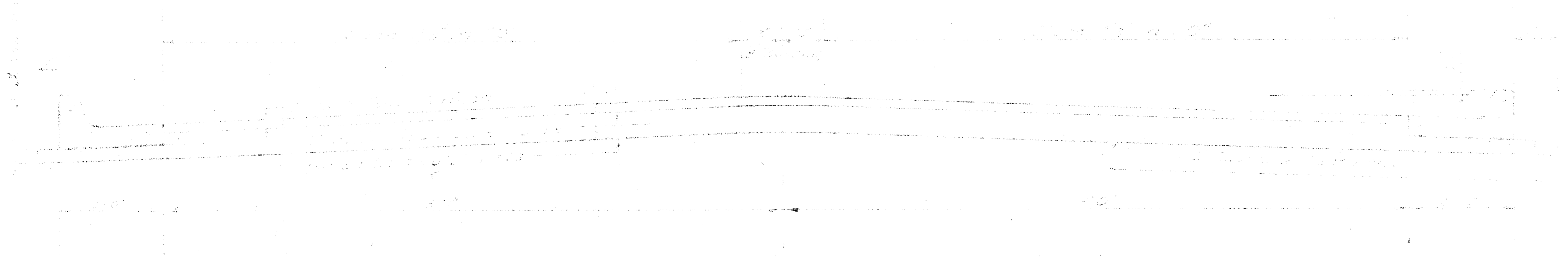


# BOSTON

E.L. LINDEN TO W.L. BEDELL

PROJECT NO. DAKS 574053

472 76 245 80228 000 000 001

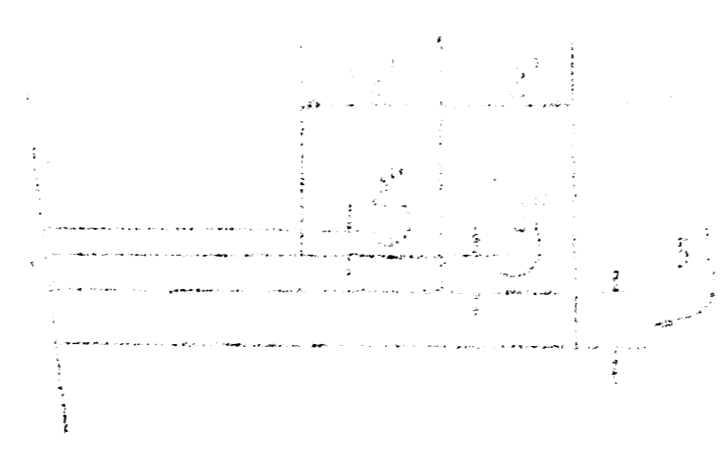


## TYPICAL SECTION

### 3.5" ASPHALTIC CONCRETE PAVEMENT WITH BITUMINOUS BASE

A TOP COAT OF EMULSIFIED ASPHALT (ES-10) SHALL BE APPLIED AT AN APPROXIMATE RATE OF ONE GALLON PER SQUARE YARD PER LIFT OF ASPHALTIC MATERIALS WHEN ORDERED BY THE ENGINEER. THIS COAT WILL NOT BE CONSIDERED AS A SEPARATE LIFT AND SHALL BE CONSIDERED AS SUBSIDIARY TO THE ASPHALTIC PAVEMENT. BITUMINOUS BASE AND ASPHALTIC CONCRETE WEAR SURFACE SHALL BE PLACED WITH A BATCHING PLANT AND AUTOMATIC ELECTRONIC CONTROLS FOR CROWN AND GRADE. CONSTRUCTION JOINTS IN EACH LIFT SHALL BE SPACED AT A MINIMUM DISTANCE OF 10' WITH JOINTS IN PREVIOUS LIFTS AND PLACED SUCH THAT A JOINT WILL BE CONSTRUCTED ON THE CENTERLINE IN THE TOP LIFT.

### DETAIL OF TRANSVERSE CONSTRUCTION JOINTS



TRANSVERSE CONSTRUCTION JOINTS SHALL BE CONSTRUCTED IN FLEXIBLE BASE PAVEMENTS AT LOCATIONS WHERE PAVEMENT TEMPORARILY ENDS TO FACILITATE FUTURE PAVEMENT CONSTRUCTION AS SHOWN BY DETAIL. THE DETAIL OF CONSTRUCTING THE TRANSVERSE CONSTRUCTION JOINTS SHALL NOT BE REQUIRED OTHER THAN AS SHOWN BUT SHALL BE INCLUDED IN THE BID PRICE FOR GRADE PAVEMENT OF ASPHALTIC CONCRETE PAVEMENT.

DATE \_\_\_\_\_  
BY \_\_\_\_\_  
TITLE \_\_\_\_\_

DAKS 574053

B.M. 16449 'a' Top E. Co. Linden 130' N. of N.L. Boston.  
 B.M. 16638 'a' Top W. Co. Bedell at S.C. Boston.  
 Baseline is to Boston.

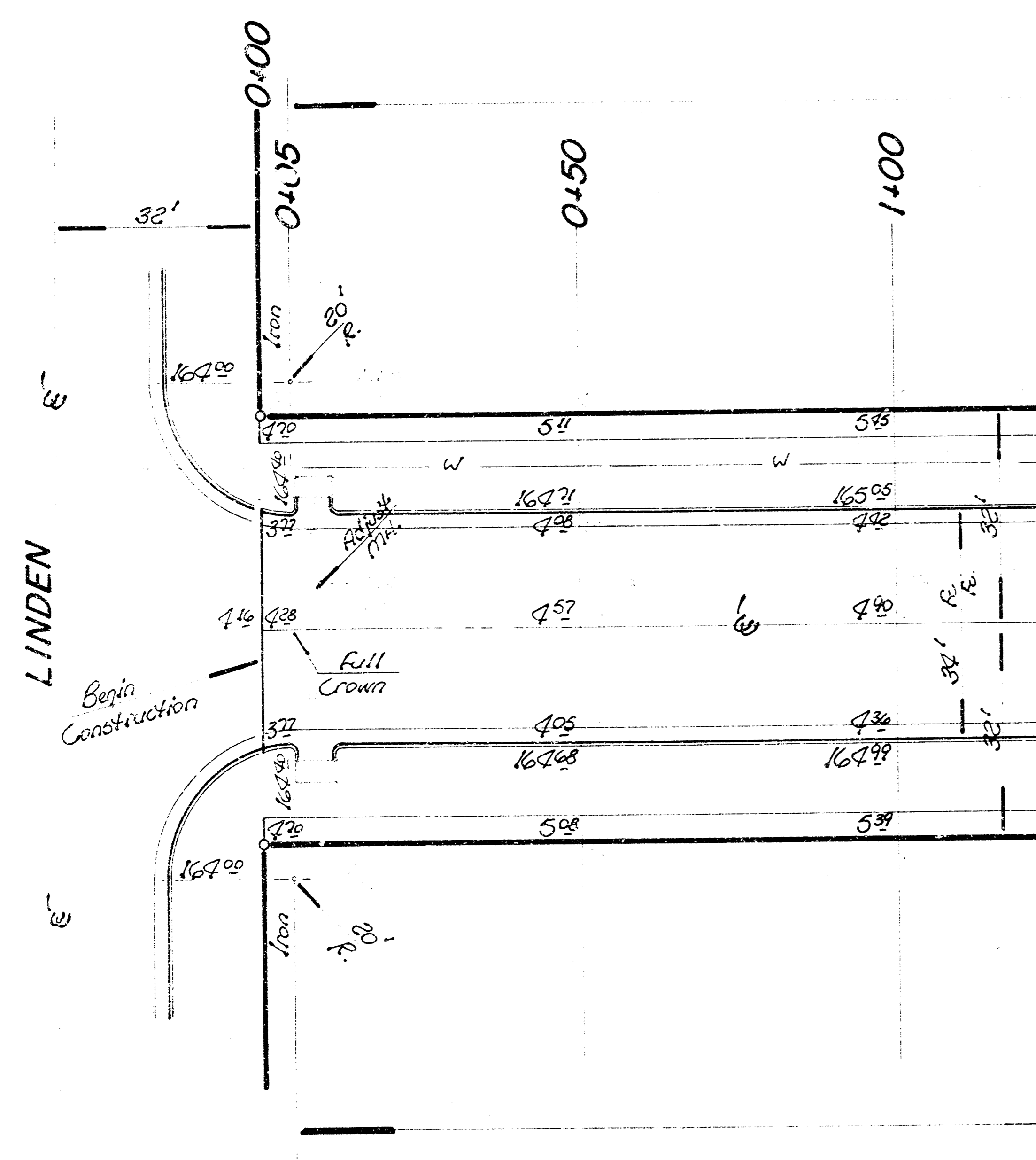
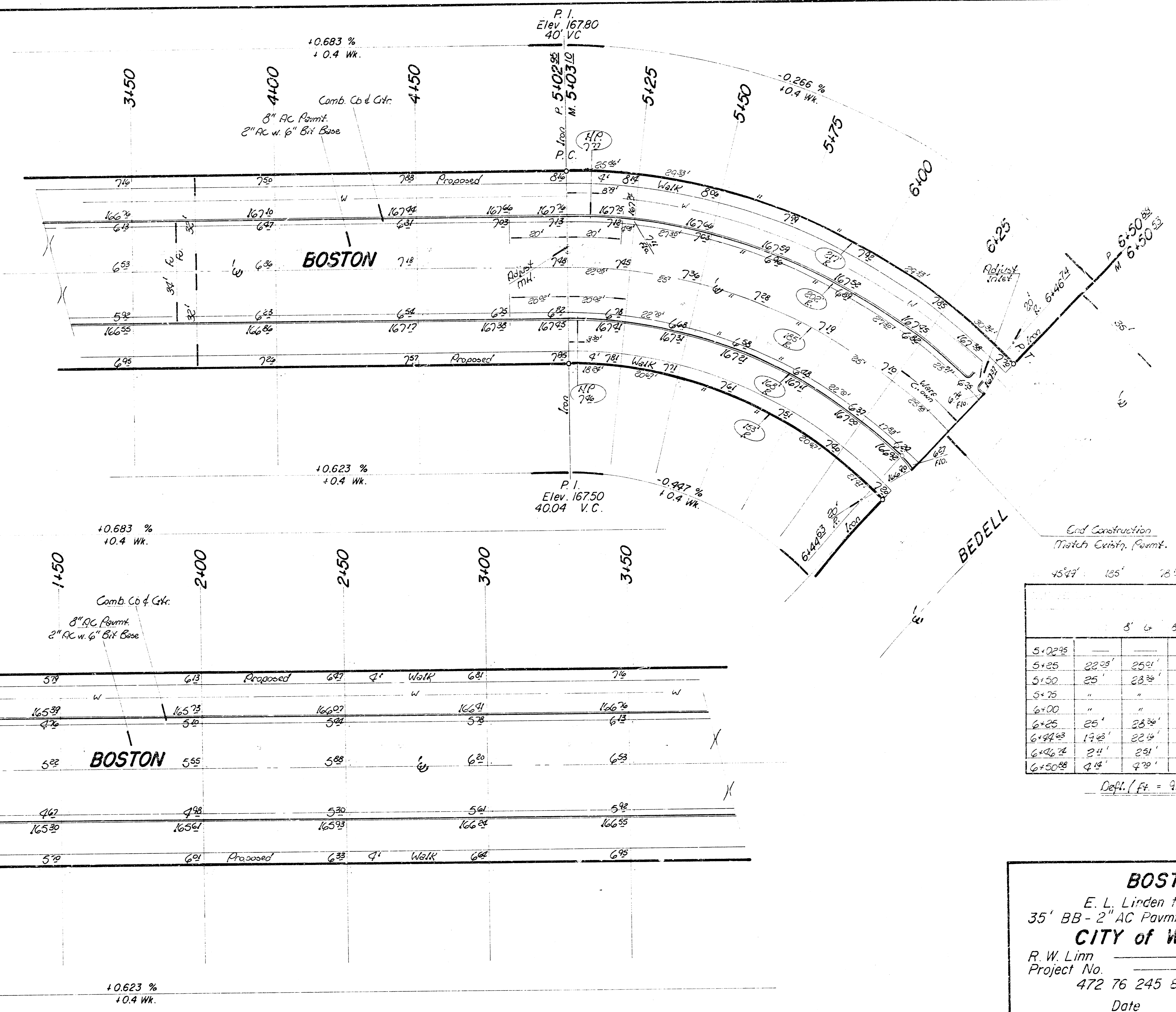
**Note:**  
 Contractor to take ties and shall replace any 'irons' either moved or destroyed during construction.

**Earthwork Quantities**

Excavation = 1723 <sup>2</sup> cy	Comp. Fill = 10 <sup>2</sup> cy
+10% = 1724 cy	+10% = 1 <sup>2</sup> cy
Total = 1896 <sup>2</sup> cy	Total = 11 <sup>2</sup> cy
Manipulation = 2675 <sup>2</sup> SY.	

NOTE TO FIELD ENGINEER & CONTRACTOR  
 Grade posting and elevations shown for proposed structure. Construction area to be constructed by CONTRACTOR.

TYPE OF SUBGRADE TREATMENT SHALL BE DETERMINED BY THE FIELD ENGINEER. SUBGRADE TREATMENT MAY CONSIST OF LIME TREATMENT, CEMENT TREATMENT, SUBGRADE MODIFICATION, OR ANY COMBINATION OF THESE.



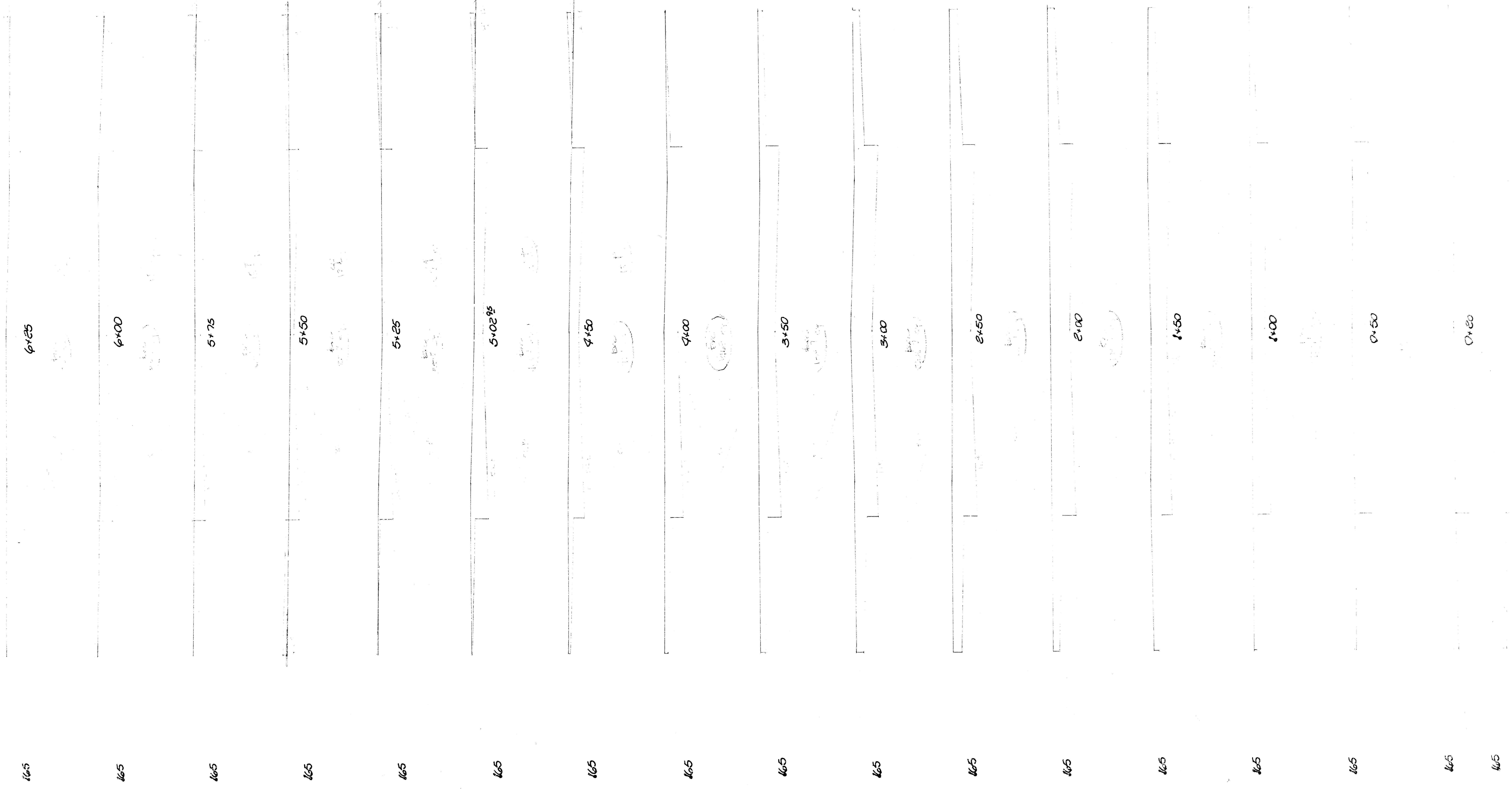
End Construction  
 Match Existing Form.

Station	3' L	3' R	Station	Station
5+02.95			0+00.00	0+00.00
5+25	22.25'	25.01'	13.25'	3+24.57
5+30	25'	28.35'	21.41'	3+52.17
5+35	"	"	"	4+24.20
6+00	"	"	"	5+01.43
6+25	25'	28.35'	21.41'	3+52.17
6+44.98	19.88'	22.15'	16.77'	3+01.27
6+46.24	24'	29'	1.83'	0+20.32
6+50.98	4.14'	7.70'	3.38'	0+38.31

Defl. / Ft. = 9.24120757 min.

**BOSTON**  
 E. L. Linden to W. L. Bedell  
 35' BB - 2" AC Pavmt. w. 6" Bit. Base - Comp. Co. Gr.  
**CITY of WICHITA, KS.**  
 R. W. Linn City Engineer  
 Project No. DAKS 574053  
 472 76 245 80228 000 000 001  
 Date \_\_\_\_\_

Scale: 1" = 30'



1+65

1+65

1+65

1+65

1+65

1+65

1+65

1+65

1+65

1+65

1+65

1+65

1+65

1+65

1+65

1+65

1+65

6x25

6x00

5x75

5x50

5x25

5x02 1/2

4x50

4x00

3x50

3x00

2x50

2x00

1x50

1x00

0x50

0x20