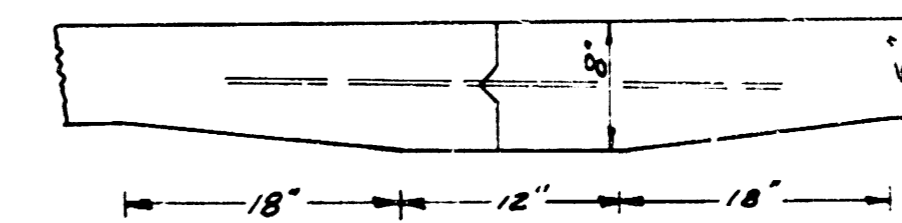
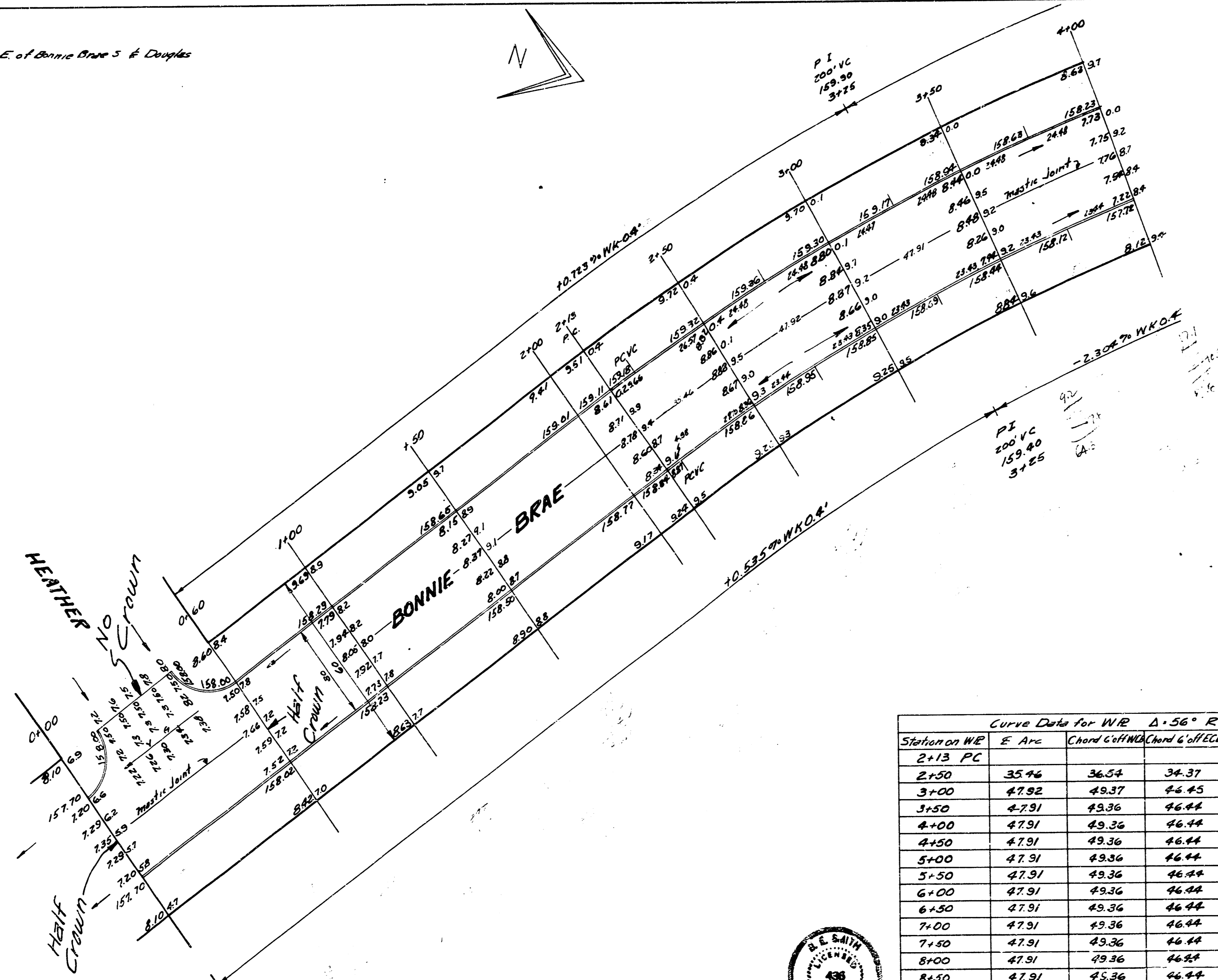


B.M. 151.73 + on top W. Handrail Post S.S. R.C.B. 120' E. of Bonnie Brae S. & Douglas
 Stationing on W.R.



Use 1/2" bars, 3' long, 2'-6" centers

MASTIC JOINT DETAIL

Curve Data for W.R. $\Delta = 56^\circ$ $R = 718.70$

Station on W.R.	E. Arc	Chord	Chord	Chord	Deflection	Total Deflection
2+13 PC						
2+50	35.46	36.54	34.37	1° 28' 30"	1° 28' 30"	
3+00	47.92	49.37	46.45	1° 59' 36"	3° 28' 06"	
3+50	47.91	49.36	46.44	1° 59' 34"	5° 27' 40"	
4+00	47.91	49.36	46.44	1° 59' 35"	7° 27' 15"	
4+50	47.91	49.36	46.44	1° 59' 34"	9° 26' 49"	
5+00	47.91	49.36	46.44	1° 59' 35"	11° 26' 24"	
5+50	47.91	49.36	46.44	1° 59' 34"	13° 25' 58"	
6+00	47.91	49.36	46.44	1° 59' 35"	15° 25' 33"	
6+50	47.91	49.36	46.44	1° 59' 34"	17° 25' 07"	
7+00	47.91	49.36	46.44	1° 59' 35"	19° 24' 42"	
7+50	47.91	49.36	46.44	1° 59' 35"	21° 24' 17"	
8+00	47.91	49.36	46.44	1° 59' 35"	23° 23' 52"	
8+50	47.91	49.36	46.44	1° 59' 34"	25° 23' 26"	
9+00	47.92	49.37	46.45	1° 59' 34"	27° 23' 02"	
9+1545 PT	14.81	15.26	14.36	0° 36' 58"	28° 00' 00"	



BONNIE BRAE
 SL HEATHER TO SL DOUGLAS
 30' CONCRETE & CURB

CITY OF WICHITA KANS
 BE SMITH CITY ENGINEER
 MARCH 1954 Proj. No. C14-28



