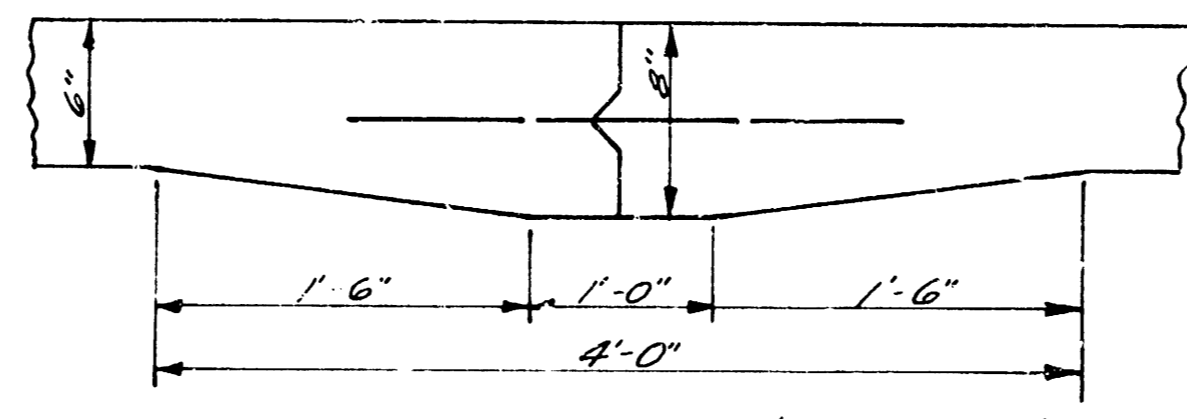


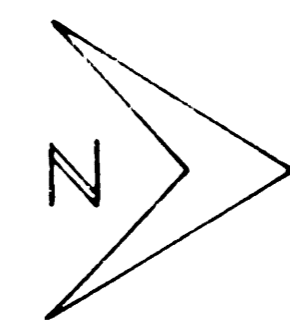
Curve Data:  $R=658.2'$  W.P.L.  $\Delta=17^{\circ}29'30''$   $L=223.71'$

Sta.	Chord	Chord	Defl.	Tot. Defl.
0+21.92				
45'	27.72'	25.88'	1°13'20"	1°13'20"
1100	47.34'	46.07'	2°10'34"	3°23'54"
180	47.35'	46.08'	2°10'35"	5°34'29"
2100	47.34'	46.07'	2°10'34"	7°45'03"
2145.83	47.25'	45.95'	1°57'42"	9°44'45"

Chaining N. on W.P.L.  
 B.M. 143.63 80' Spike S.E. Side P.P. 50' W of W.P.L. Bonnie Brae,  
 North Side Kellogg



Detail of Mastic Key Joint  
 No Scale

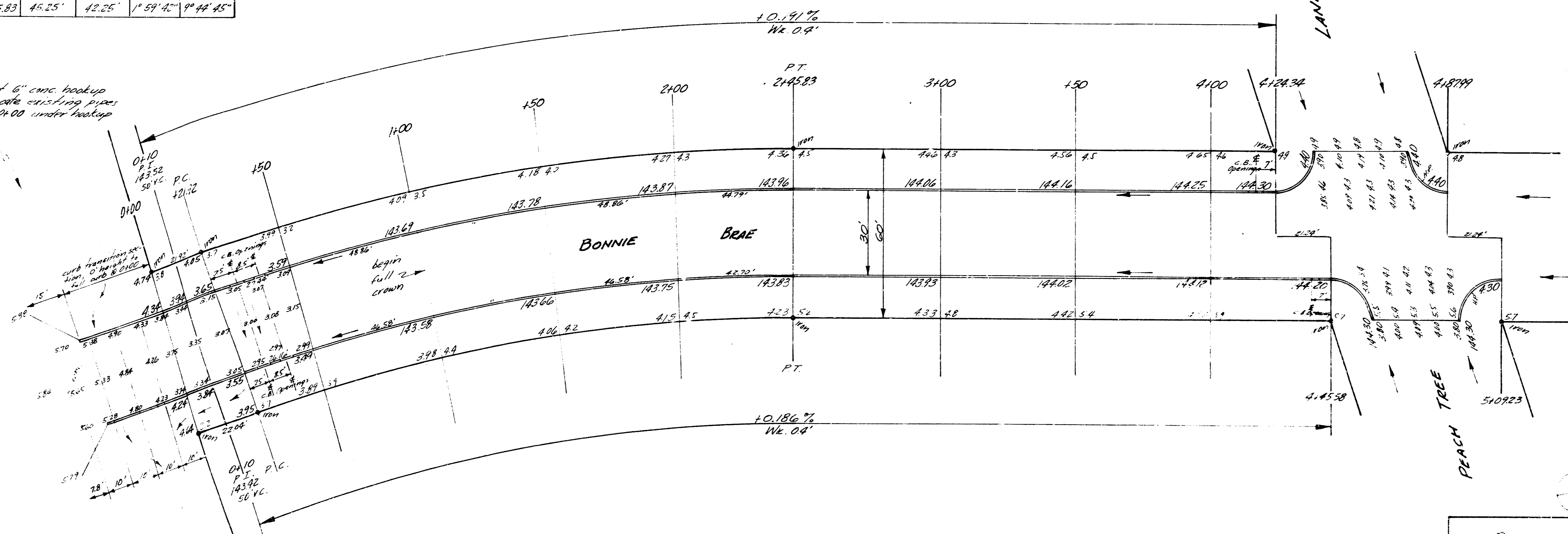


Scale: 1" = 20'

NOTE TO CONTRACTOR & FIELD ENGR.:  
 Curb openings to be made for future  
 catch basins where indicated on plan.

NOTE: Construct 6" conc. hood up  
 as shown. Reconnect existing pipes  
 25' to 30' south of 0+00 under hood up  
 to drain ditch.

41.5-54



NOTE: Dig ditch in east parking  
 from curb openings south to existing  
 ditch to drain part.

**BONNIE BRAE**  
 N.L. KELLOGG TO S.L. WILSON BROOK  
 30' CONC. & CB.  
 CITY OF WICHITA, KANSAS  
 B.E. SMITH - CITY ENGINEER  
 NOV 13 1933 Proj. C14-3B

