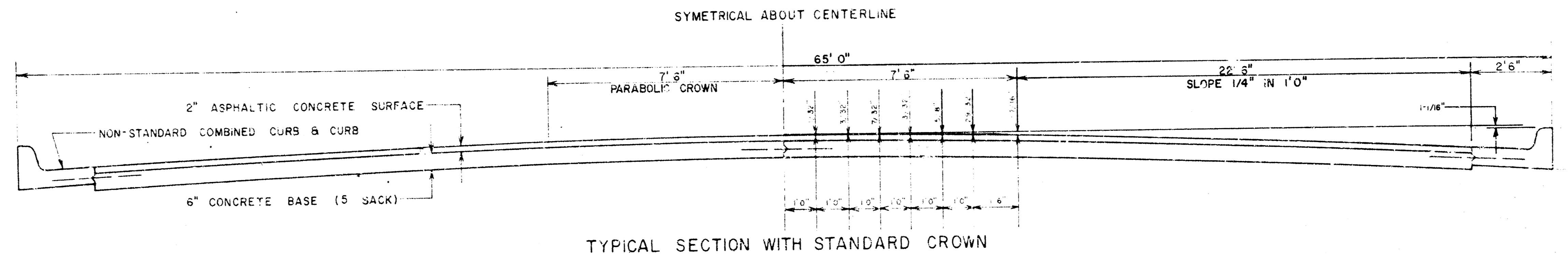
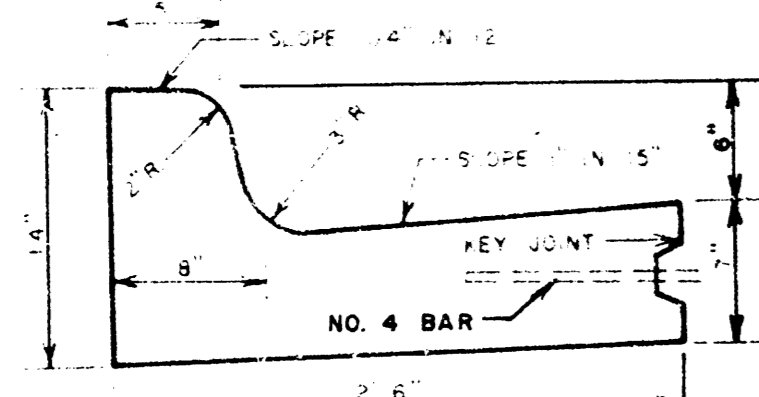
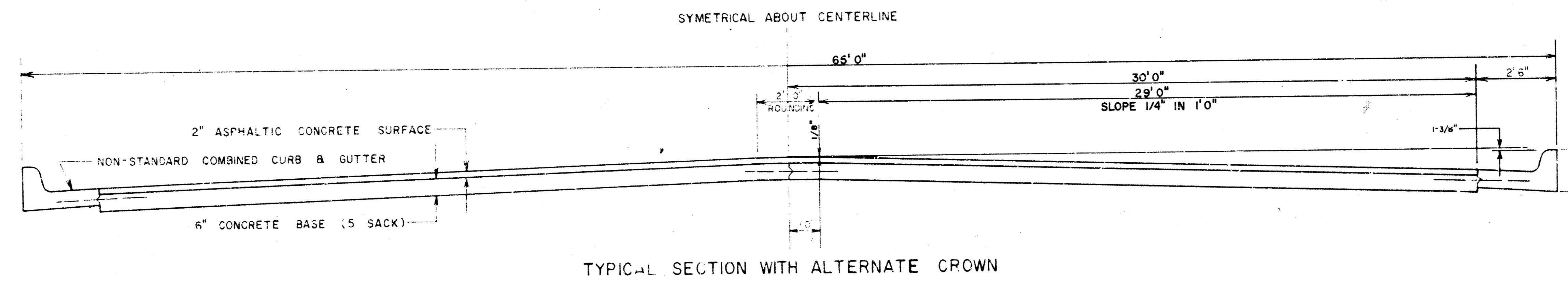


CENTRAL AVENUE
 E. L. 1-35W TO W. L. PIATT AVENUE
 PROJ. NO. DAKM569077
 CITY OF WICHITA, KANSAS
 R. W. LINN, CITY ENGINEER

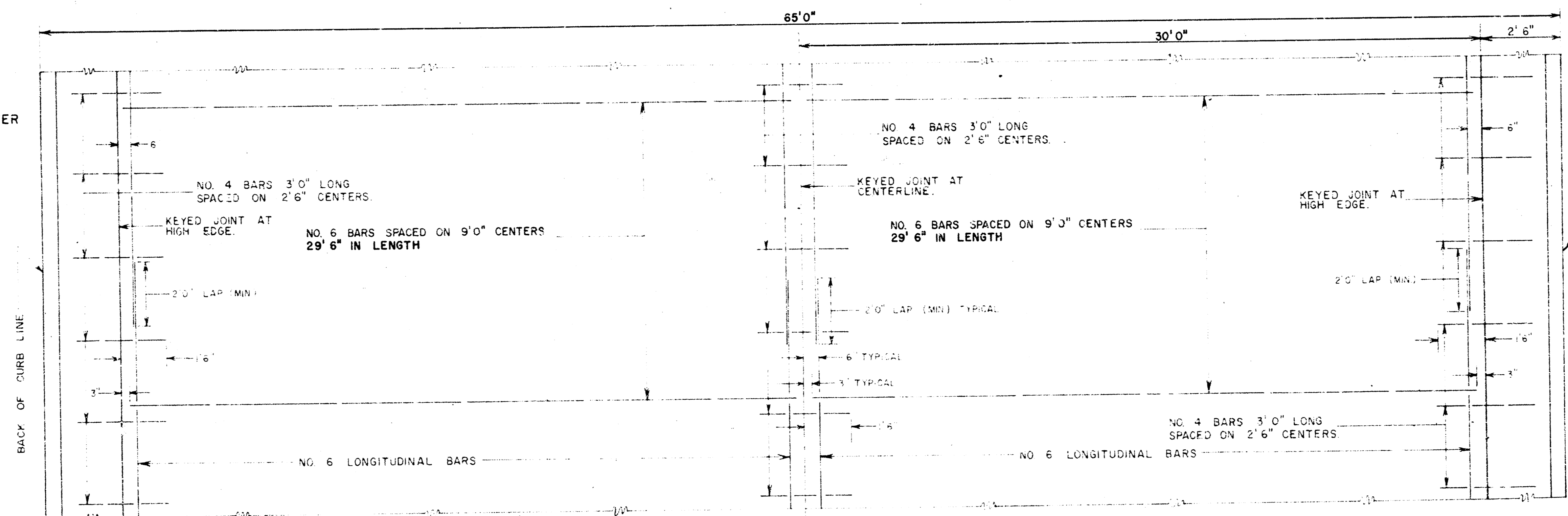


TOP 6" OF SUBGRADE TO BE TREATED WITH LIME.



DETAIL OF NON-STANDARD
 COMBINED CURB & GUTTER

GENERAL NOTES
 CONTRACTION JOINTS MAY BE CONSTRUCTED IN
 COMBINED CURB AND GUTTER BY SAWING WITH AN
 APPROVED CONCRETE SAW. THE SAW CUT SHALL
 EXTEND 2-1/2" BELOW THE SURFACE OF THE GUTTER
 AND CURB. SAWED CONTRACTION JOINTS SHALL HAVE
 A MAXIMUM SPACING OF 10' AND BE FILLED WITH
 A SPECIFIED JOINT FILLER, SUCH THAT THE JOINT
 IN THE GUTTER SECTION WILL BE COMPLETELY
 FILLED.
 PAVEMENT GRADES SHOWN ON PLANS ARE FOR
 STANDARD CROWN.



A.M. 119.31' 0" ON S.E. COR. S.E. WINGHALL CANAL BRIDGE CENTRAL AVE
 S.M. 1302.03 1-35 W DATUM

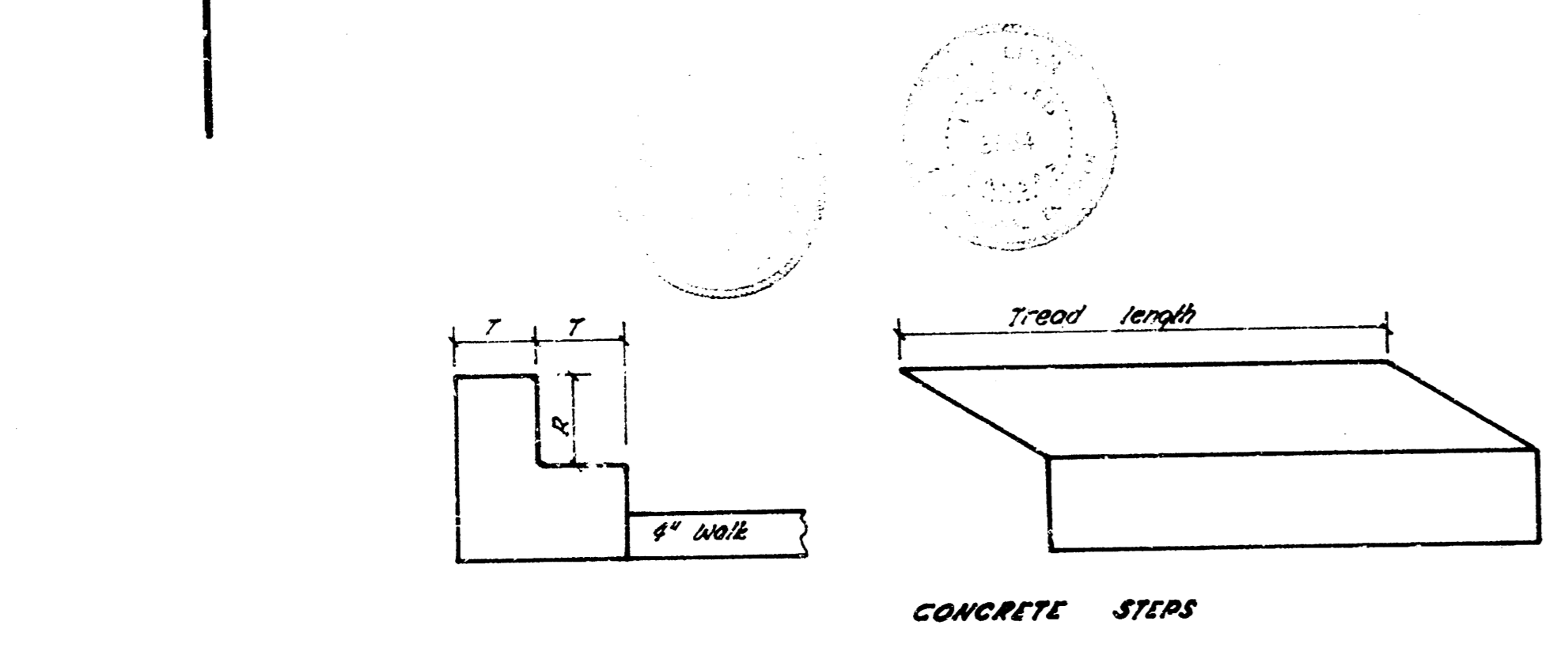
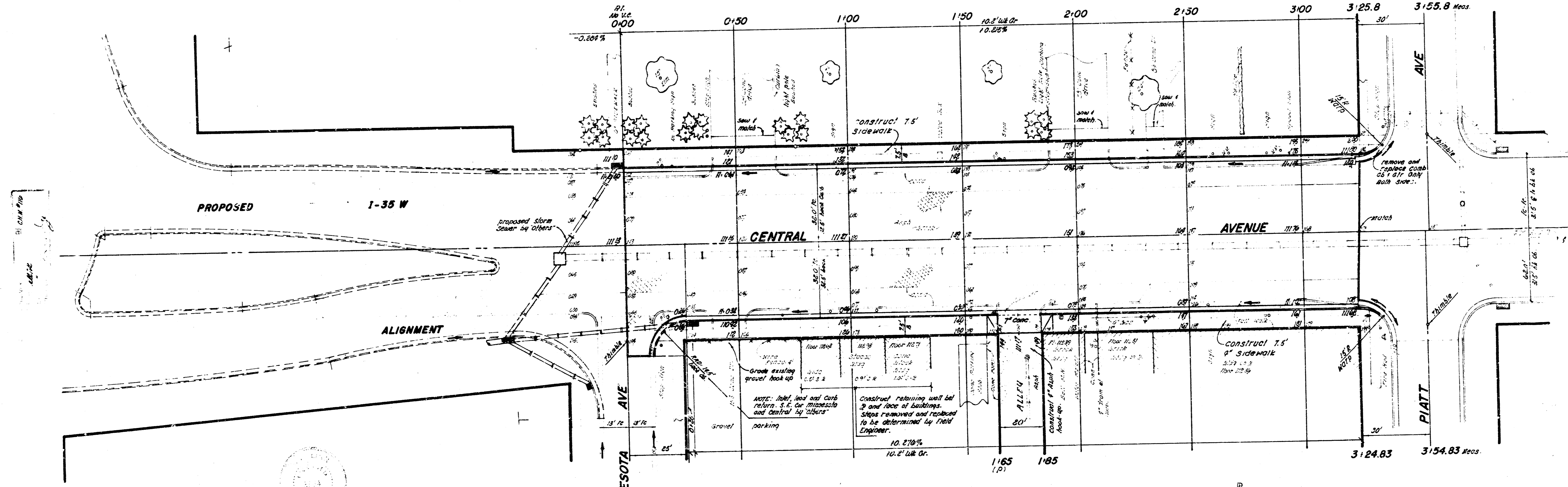
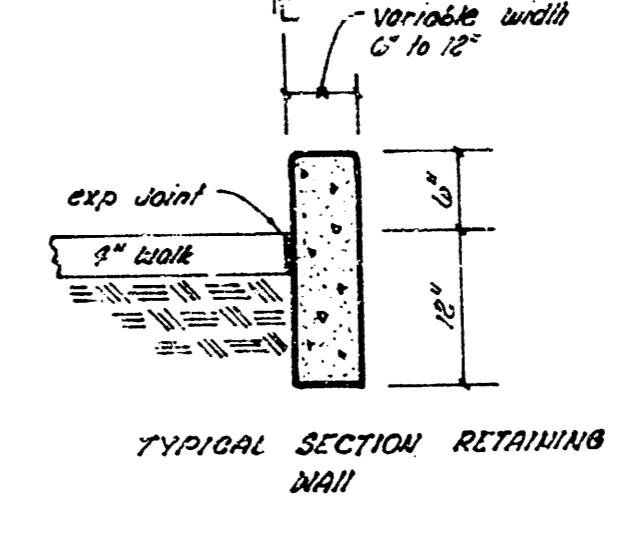
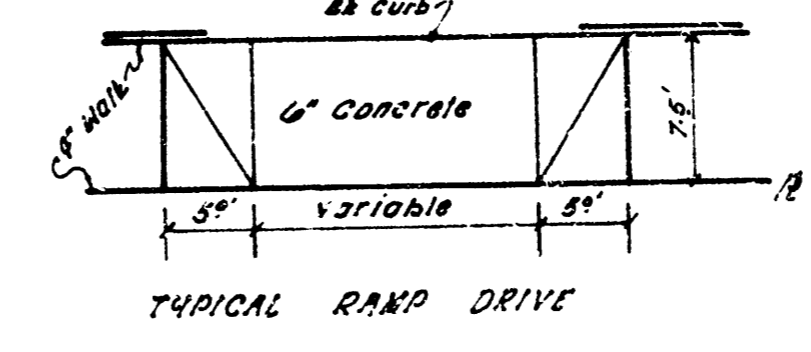


Table of proportions	
Riser	Tread
7 3/4"	9 3/4"
7 1/2"	9 1/2"
8"	9 1/2"
8 1/2"	9 1/2"
8 1/2"	9"
8 3/4"	9 3/4"

COMPACTED FILL
 200.0 cu yards
 1105.52.1
 247.5 cu yards

EXCAVATION
 125.0 cu yards
 1105.12.9
 141.5 cu yards

"BORROW MATERIAL"
 Bid item of borrow material is to include all costs of acquiring, excavating & delivering material to the project or the use of compacted fill. Quantity of borrow material shall be determined by cross sections of borrow site.
 NOTE: Field Engineer to cross section after haul removal.



CENTRAL AVENUE
 E.L. 135 W TO W.L. PIATT AVENUE
 65' BE-BE ASPHALTIC CONC. DRIVE
 and SIDEWALK
CITY of WICHITA, KANSAS.
 R.W. LINN CITY ENGINEER
 DATE: JUNE 1911 Proj. No. D.A.M. 56907