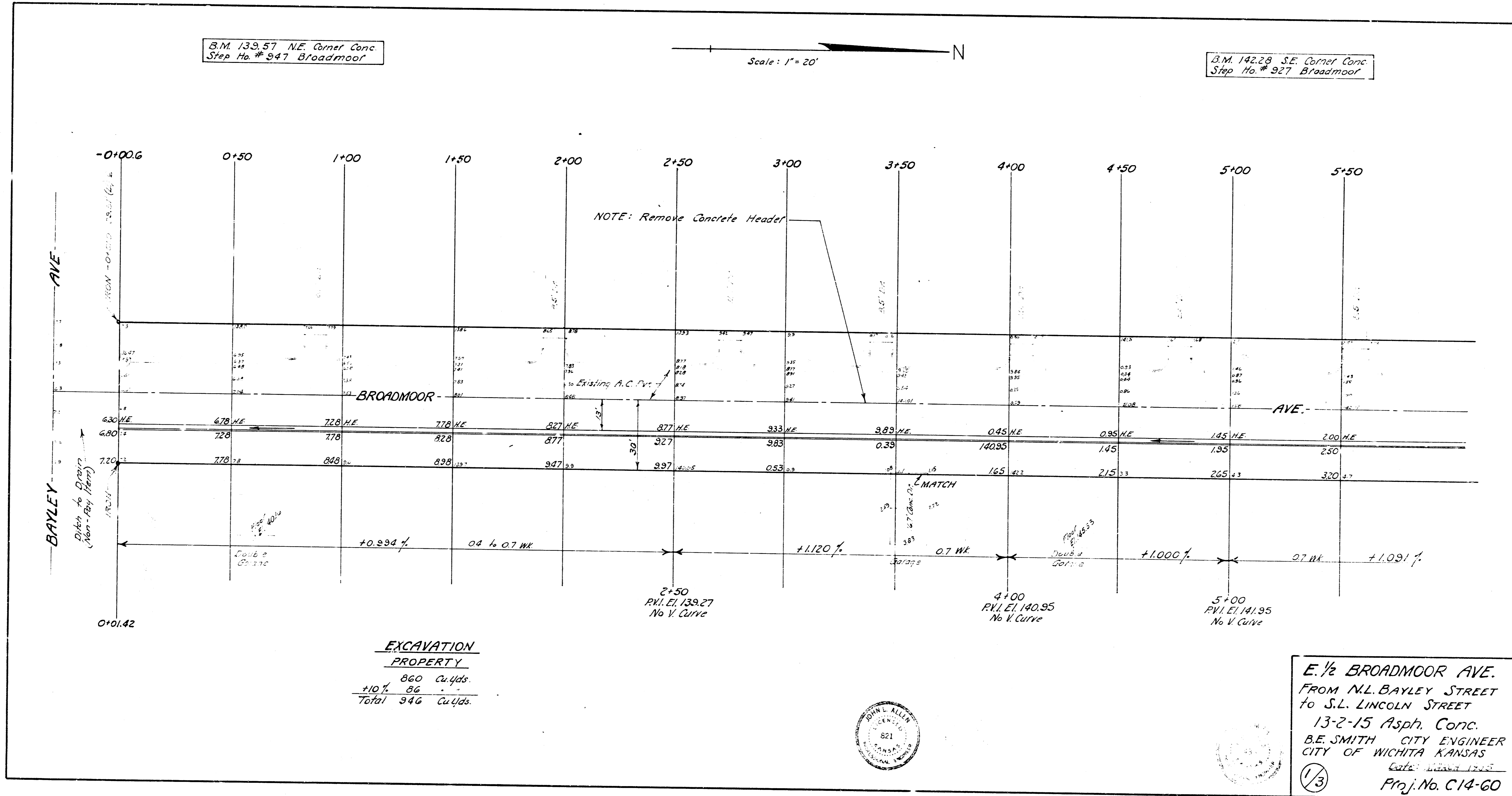


B.M. 139.57 N.E. Corner Conc.
Step No. # 947 Broadmoor

Scale: 1" = 20'

B.M. 142.28 S.E. Corner Conc.
Step No. # 927 Broadmoor



B.M. 144.05 "R" in Ritchie W. Curb
Broadmoor, 5' N. of S.L. Lincoln

