

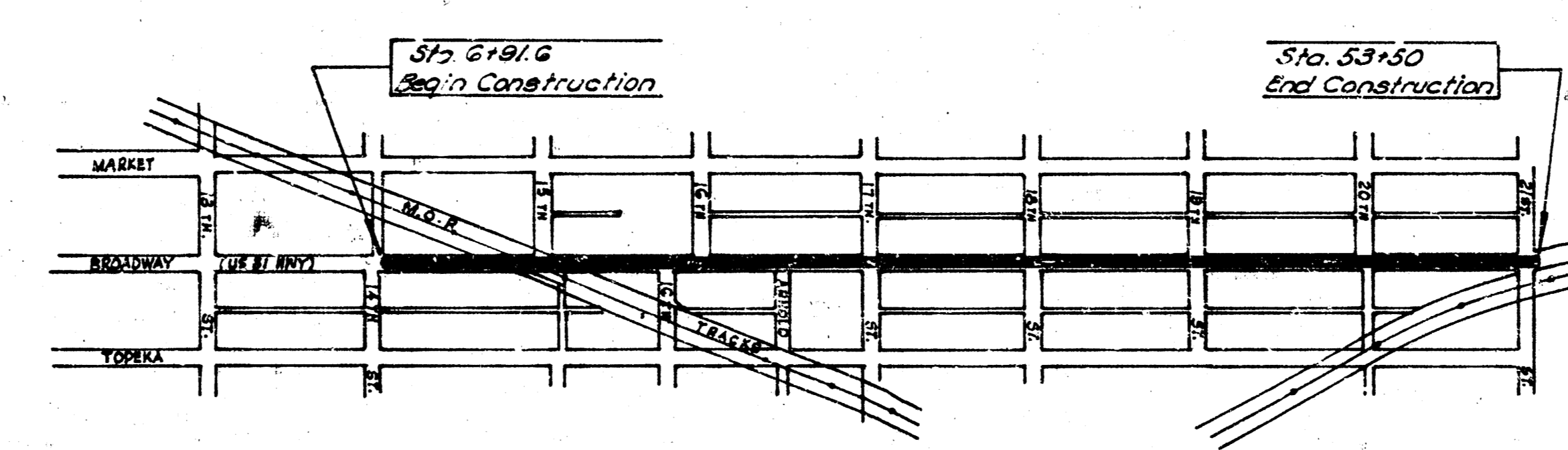
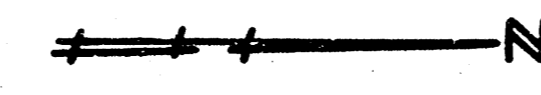
PUBLIC WORK DIV. NO.	STATE	PROJECT NO.	FISCAL YEAR	SHEET NO.	TOTAL SHEETS
	Kansas	81-87A-8217(2)	1971	1	10

## BROADWAY AVENUE (US-81)

NL 14TH ST.-NL 21ST ST.

R.W. LINN CITY ENGINEER  
 CITY PROJECT NO. DAKM571020  
 STATE 81-87K5217 (2)  
 Agreement NO. 29-71

STATE OF KANSAS  
 STATE HIGHWAY COMMISSION  
 SEDGWICK COUNTY



SHEET INDEX  
 1. Title and Location  
 2. Typical and Details  
 3-10. Construction Plans  
 11-16. Crosssections

SEP 14 1971

Approved	Date	Approved	Date
<i>John D. McNeal</i>		<i>Allen J. ...</i>	9/8/71
STATE HIGHWAY ENGINEER State Highway Commission of Kansas		CITY ENGINEER Department of Public Works City of Wichita, Kansas	

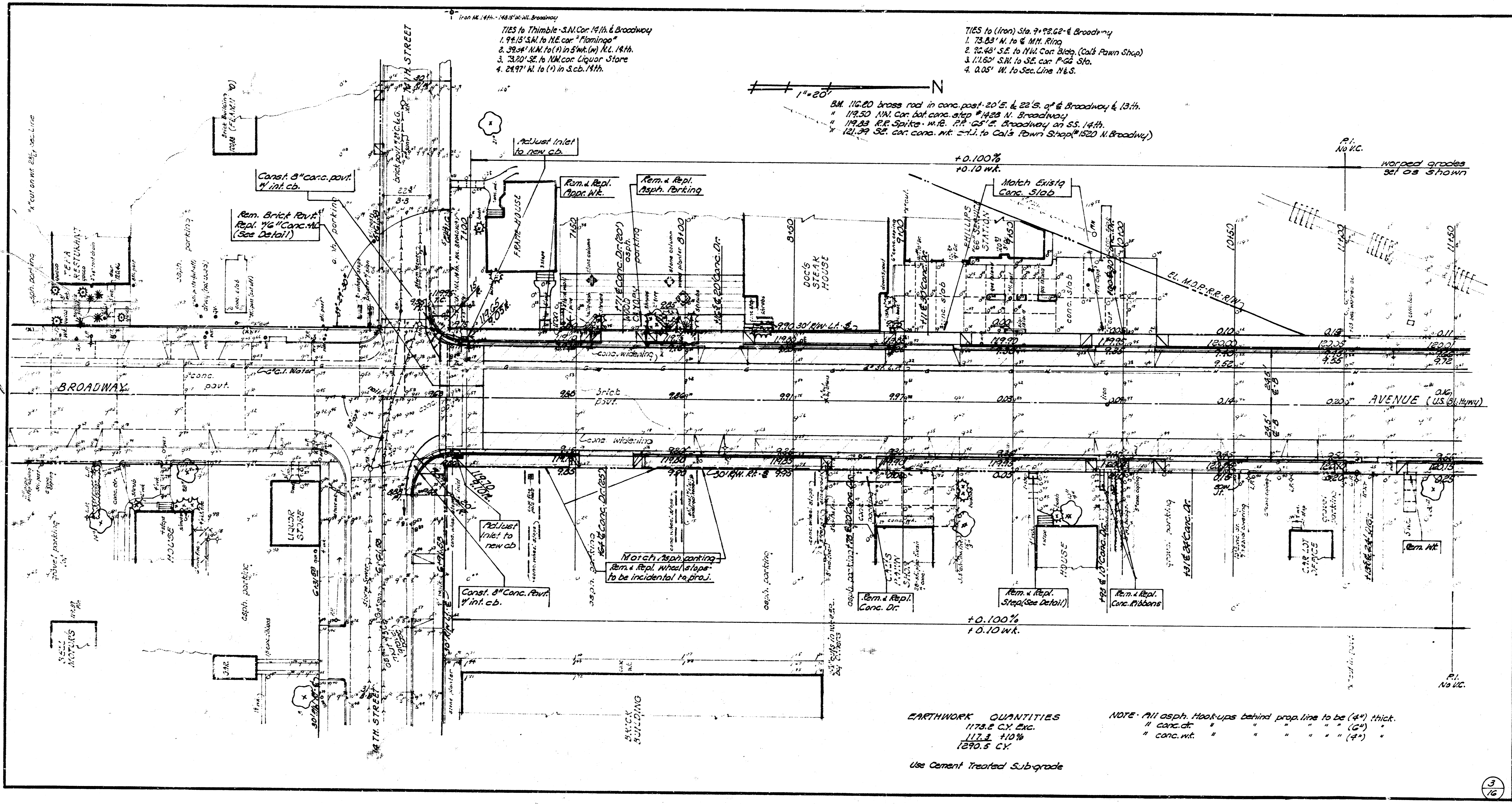
**BROADWAY AVE. (US 81 HWY)**  
 Type of Construction:  
 Existing curb, widening, curbs, sidewalks & drains to be removed, const. curb, ch. and cur. and 6" conc. base widening, making a total roadway of 44' (B-2) - const. new sidewalk & drains, install drainage, const. asph. leveling course and asph. overlay on existing pavement and base widening.  
 All costs of asphalt leveling and overlay to be paid for by the State Highway Commission. The estimated tonnage being (5310 tons).



Sept. 1971

1/16





TIES to Thimble - S.M. Cor. 14th & Broadway  
 1. 94.15' S.M. to NE cor. "Flamingo"  
 2. 39.84' N.M. to (1) in 5' W. (W) N.E. 14th.  
 3. 38.70' S.E. to N.M. cor. Liquor Store  
 4. 24.97' N. to (1) in S.E. 14th.

TIES to (Iron) Sta. 9+92.02 & Broadway  
 1. 73.83' N. to & M.H. Ring  
 2. 70.40' S.E. to N.H. Cor. Bldg. (Call Pawn Shop)  
 3. 111.60' S.M. to S.E. cor. P.G. Sta.  
 4. 0.05' W. to Sec. Line N.E.S.

1" = 20'  
 B.M. 116.20 brass rod in conc. post 20' E. & 22' S. of & Broadway & 13th.  
 \* 119.50 N.M. cor. dot conc. step #1428 N. Broadway  
 \* 119.29 S.E. Spike W.P. 77' 05" E. Broadway on S.S. 14th.  
 \* 121.39 S.E. cor. conc. mt. - 77.1' to Call's Pawn Shop #1520 N. Broadway)

Survey Aug 70 to 73  
 Plan  
 Checked  
 2/2/74

EARTHWORK QUANTITIES  
 1178.8 CY Exc.  
 117.8 ± 10%  
 1290.5 CY  
 Use Cement Treated Sub-grade

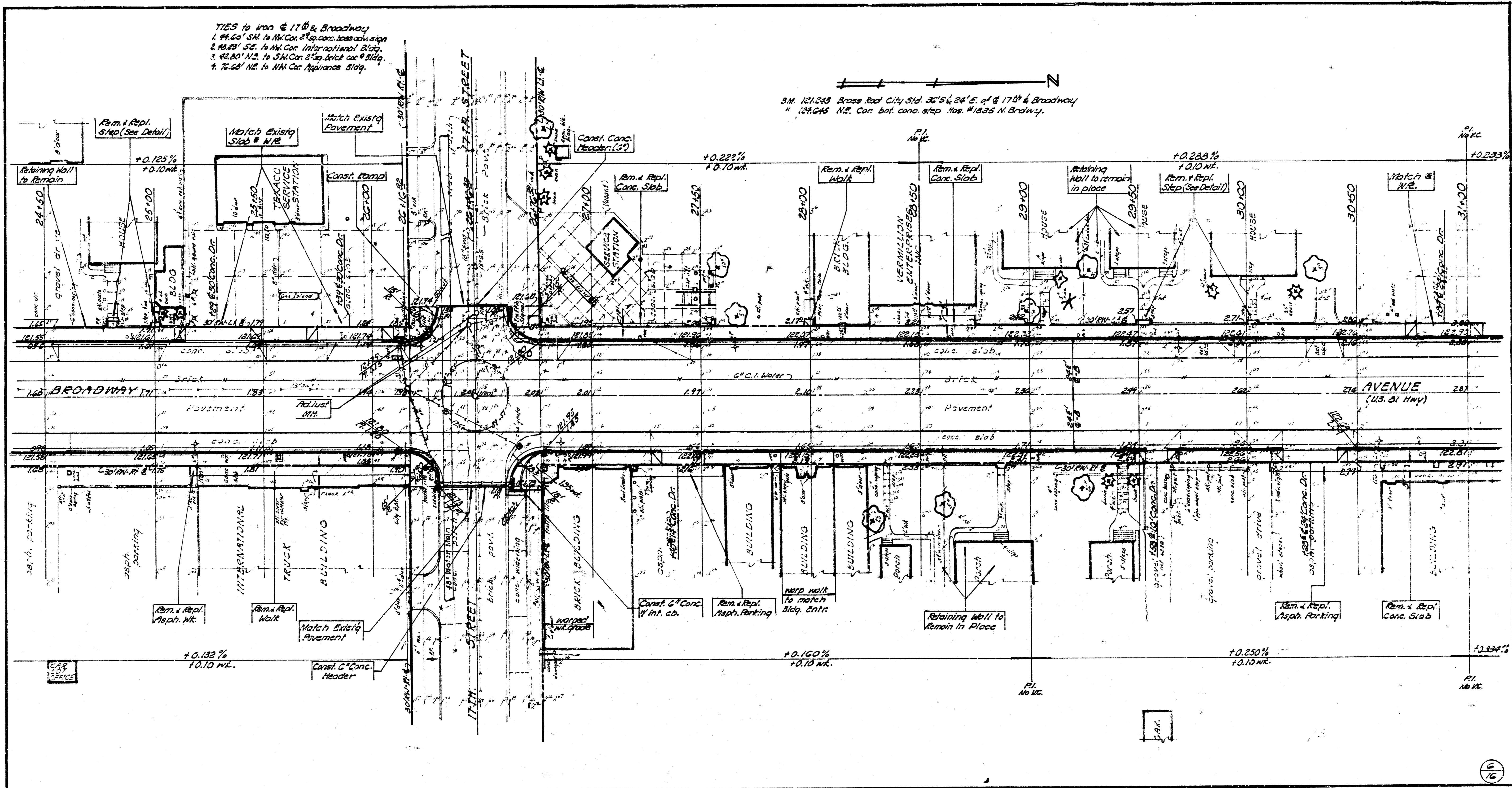
NOTE: All asph. Hook-ups behind prop. line to be (4") thick.  
 " conc. dt. " " " " " (6")  
 " conc. mt. " " " " " (4")





TIES to Iron @ 17th & Broadway  
 1. 44.60' S.W. to NW Cor. 2<sup>nd</sup> floor base design  
 2. 40.00' S.E. to NW Cor. International Bldg.  
 3. 42.00' N.E. to SW Cor. 2<sup>nd</sup> floor brick case Bldg.  
 4. 76.00' N.E. to NW Cor. Appearance Bldg.

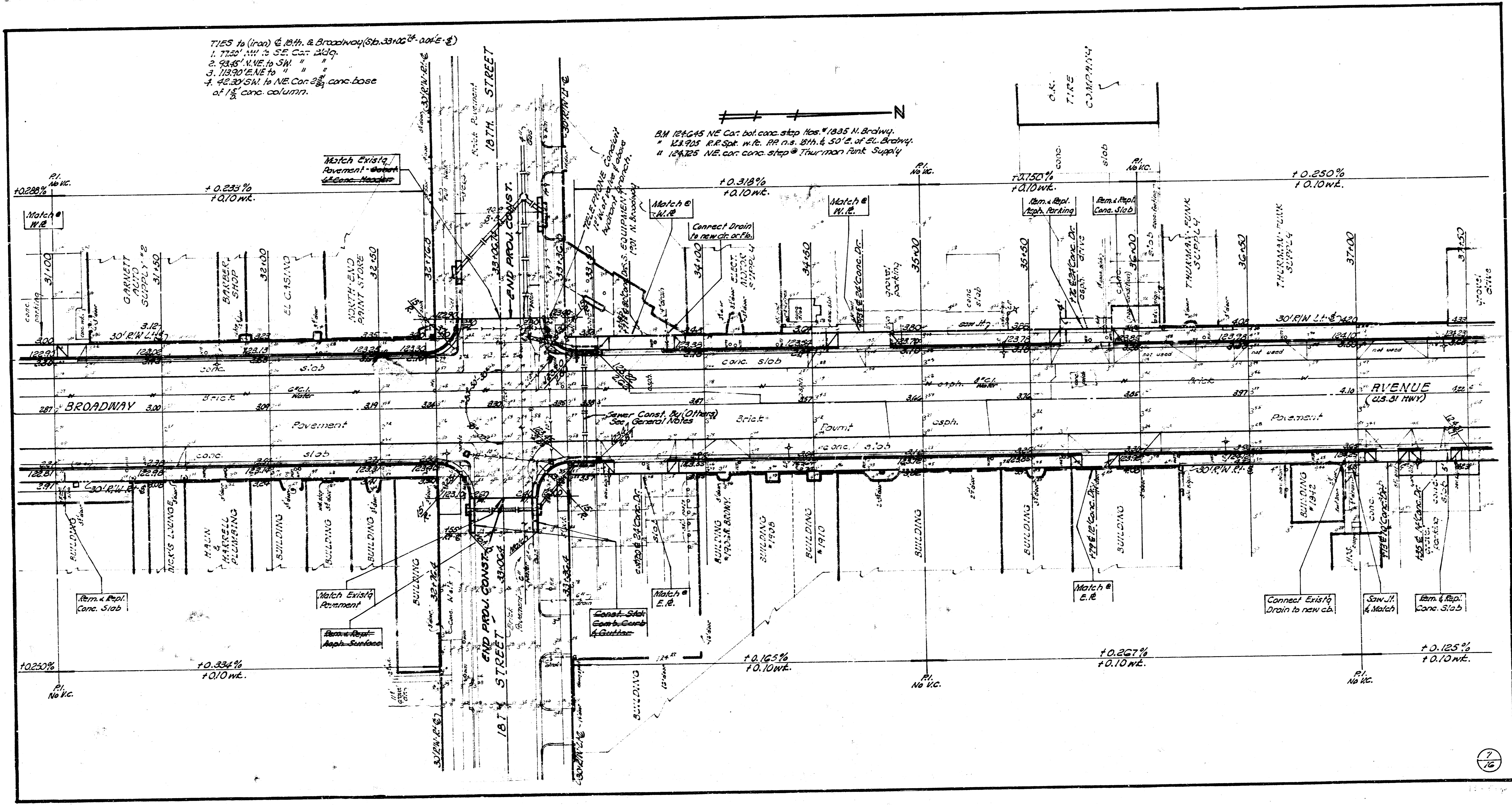
S.M. 121,245 Cross Red City Sid. 36' 5 1/2" 24' E. of 17th & Broadway  
 " 124,045 N.E. Cor. bot. conc. step Nos. 1835 N. Broadway.



TIES to (iron) @ 18th & Broadway (St. 3322' - 0.01' - 8)

1. 7750' NW to SE Cor. Bldg.
2. 9345' N.W.E. to SW "
3. 11390' N.W.E. to SW "
4. 9230' SW to NE Cor. 2<sup>nd</sup> conc. base of 1/2" conc. column.

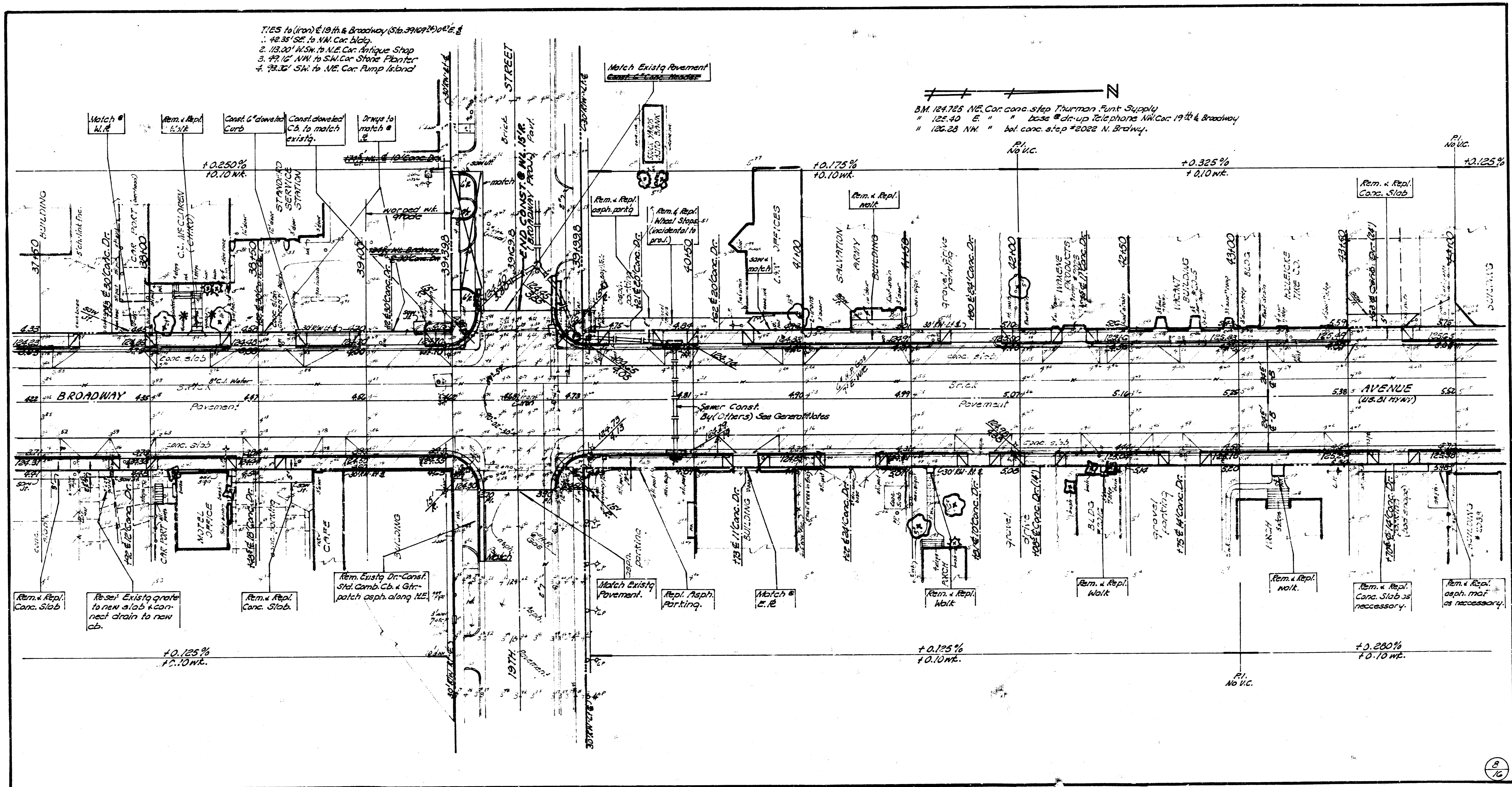
BM 124645 NE Cor. bot. conc. step nos. 1835 N. Broadway.  
 \* 124925 R.R. Spk. w. to RR n.s. 18th & 50' E. of St. Broadway.  
 # 124725 NE cor. conc. step @ Four-man Paint Supply



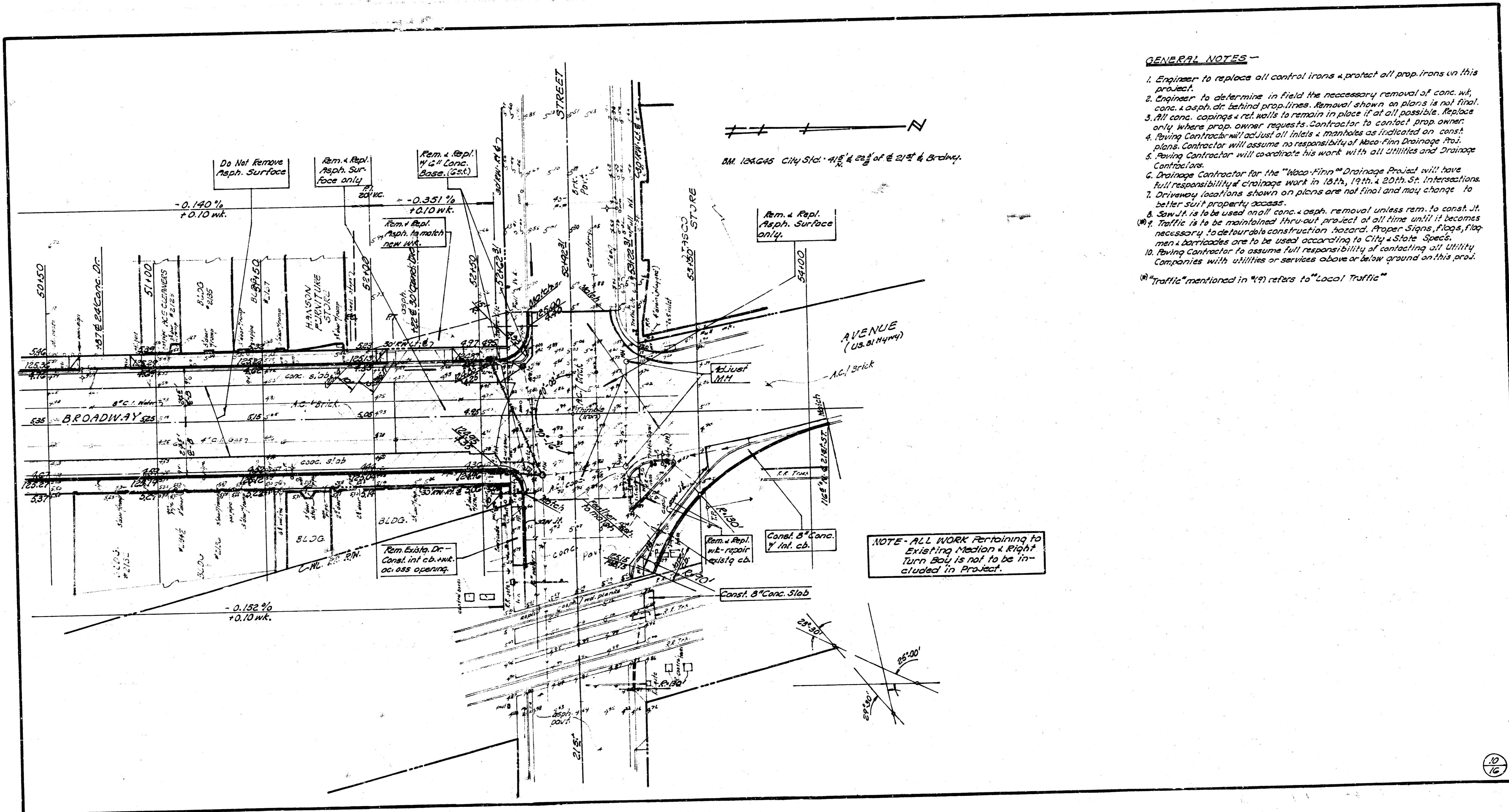
TIES to (iron) E 19th & Broadway (Sta. 39+00 to 39+60) E

1. 48.35' SE. to NW Cor. Blvd.
2. 113.00' N.W. to N.E. Cor. Antique Shop
3. 49.12' NW. to S.W. Cor. Stone Planter
4. 78.32' SW. to N.E. Cor. Pump Island

B.M. 124.725 NE. Cor. conc. step Thurman Fruit Supply  
 " 125.40 E. " " base @ dr-up Telephone NW. Cor. 19th & Broadway  
 " 126.23 NW. " " bot. conc. step #2022 N. Broadway







**GENERAL NOTES**

1. Engineer to replace all control irons & protect all prop. irons on this project.
  2. Engineer to determine in field the necessary removal of conc. wk, conc. & asph. dr. behind prop. lines. Removal shown on plans is not final.
  3. All conc. copings & ret. walls to remain in place if at all possible. Replace only where prop. owner requests. Contractor to contact prop. owner.
  4. Paving Contractor will adjust all inlets & manholes as indicated on const. plans. Contractor will assume no responsibility of Abco-Finn Drainage Proj.
  5. Paving Contractor will coordinate his work with all utilities and Drainage Contractors.
  6. Drainage Contractor for the "Abco-Finn" Drainage Project will have full responsibility of drainage work in 18th, 19th, & 20th St. Intersections.
  7. Driveway locations shown on plans are not final and may change to better suit property access.
  8. Sewer is to be used on all conc. & asph. removal unless rem. to const. JT.
  9. Traffic is to be maintained thru-out project at all time until it becomes necessary to detour due construction hazard. Proper Signs, Flags, Flag men & barricades are to be used according to City & State Specs.
  10. Paving Contractor to assume full responsibility of contacting all Utility Companies with utilities or services above or below ground on this proj.
- ① "Traffic" mentioned in "9" refers to "Local Traffic"

NOTE - ALL WORK Pertaining to Existing Median & Right Turn Bay is not to be included in Project.

