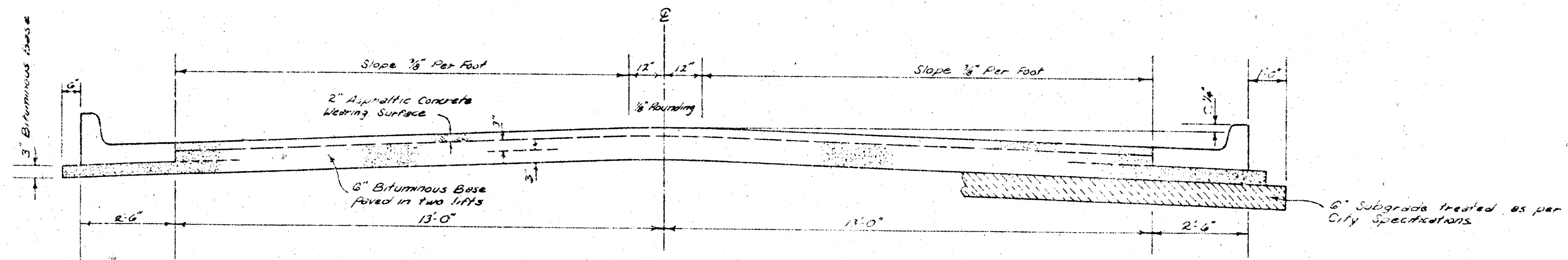


BROOKS AVENUE
 E.L. LOT 7, BLK 3, CHISHOLM PARK ESTATES—
 E.L. TERRACE DR.
 DAKS576071

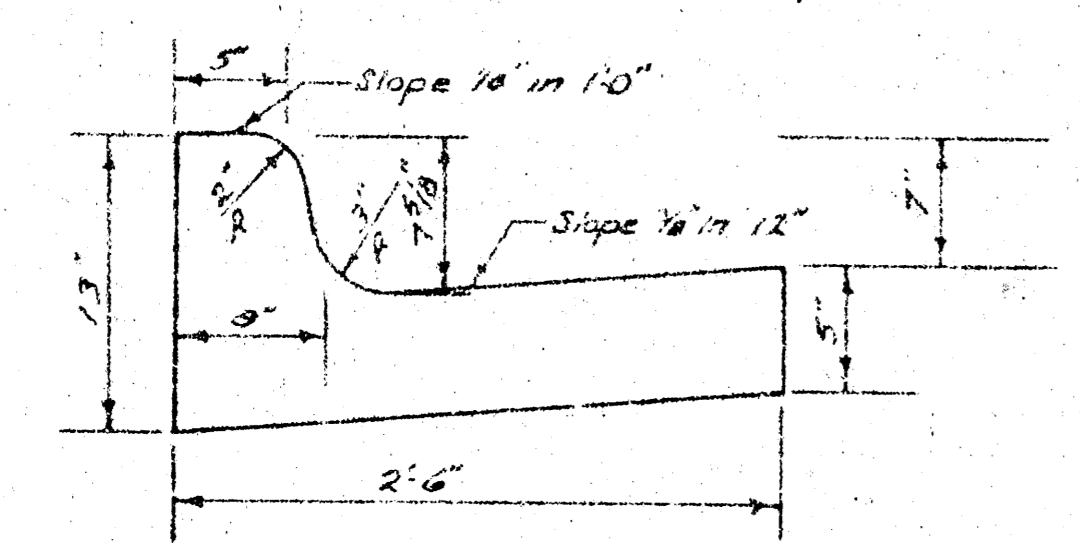


TYPICAL SECTION

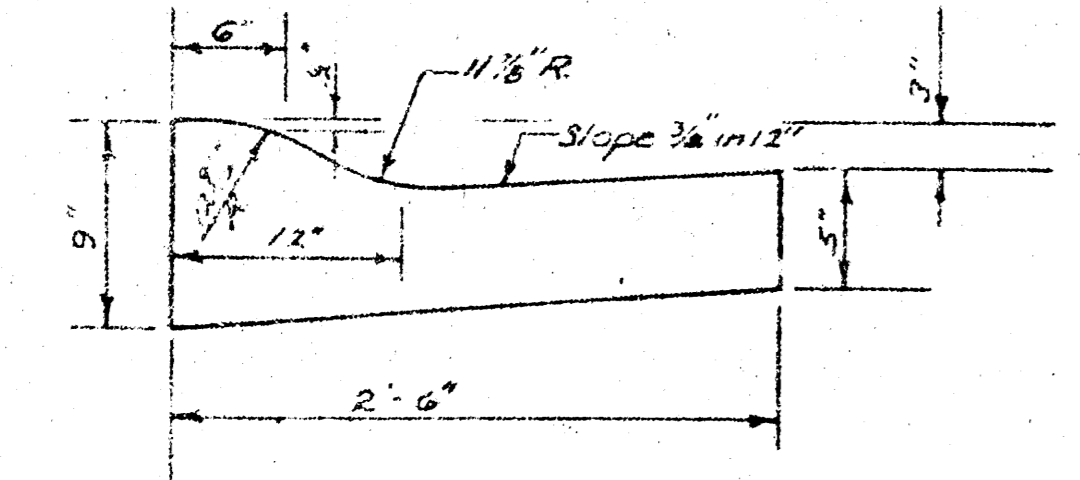
3' ASPHALTIC CONCRETE PAVEMENT WITH BITUMINOUS BASE

The A.C. pavement between the Comb. Curb & Gutter shall be paid as 3\"/>

COMBINED CURB & GUTTER



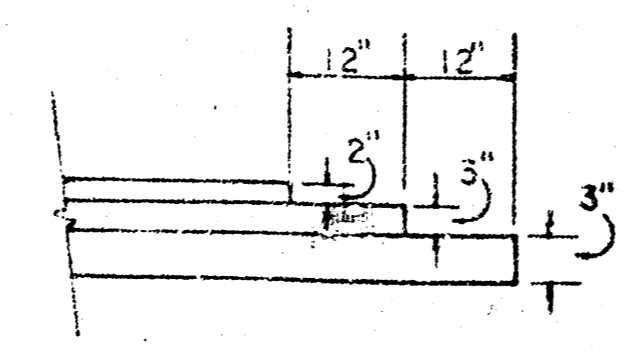
ROLL TYPE CURB & GUTTER



A TACK COAT OF EMULSIFIED ASPHALT (SS-1H) SHALL BE APPLIED AT AN APPROXIMATE RATE OF 0.05 GALLONS PER SQ. YD. BETWEEN LIFTS OF ASPHALTIC MATERIALS WHEN ORDERED BY THE ENGINEER. TACK COAT WILL NOT BE PAID FOR DIRECTLY AND SHALL BE CONSIDERED AS SUBSIDIARY TO PRICE BID FOR ASPHALTIC PAVEMENT.

BITUMINOUS BASE AND ASPHALTIC CONCRETE WEARING SURFACE SHALL BE PLACED WITH A LAYDOWN MACHINE HAVING AUTOMATIC ELECTRONIC CONTROLS FOR CROWN AND GRADE. CONSTRUCTION JOINTS IN EACH LIFT SHALL BE STAGGERED A MINIMUM DISTANCE OF 1' WITH JOINTS IN PRECEDING LIFTS AND SUCH THAT A JOINT WILL BE CONSTRUCTED ON THE PAVEMENT CENTERLINE IN THE TOP LIFT.

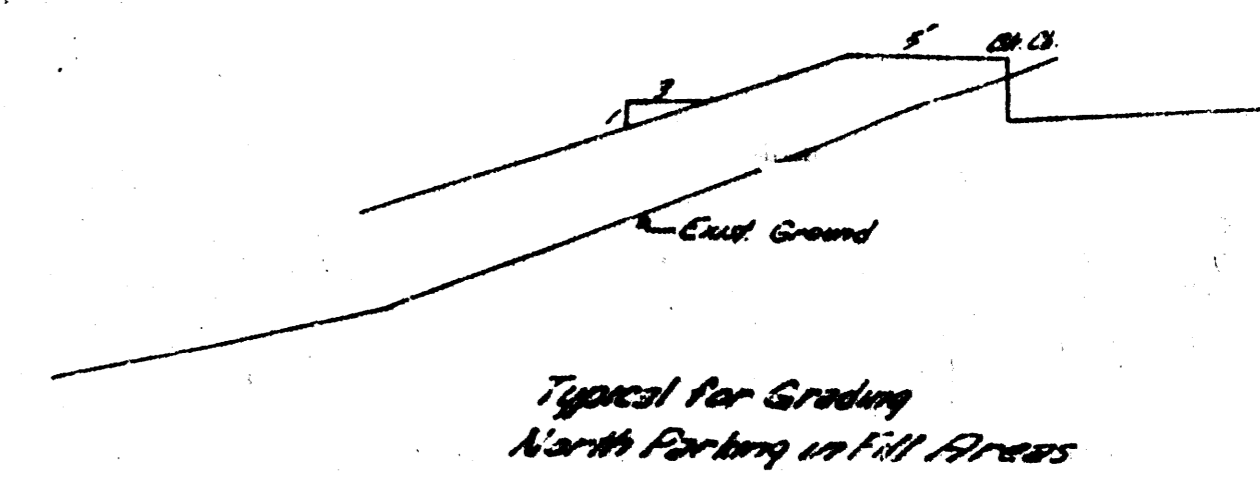
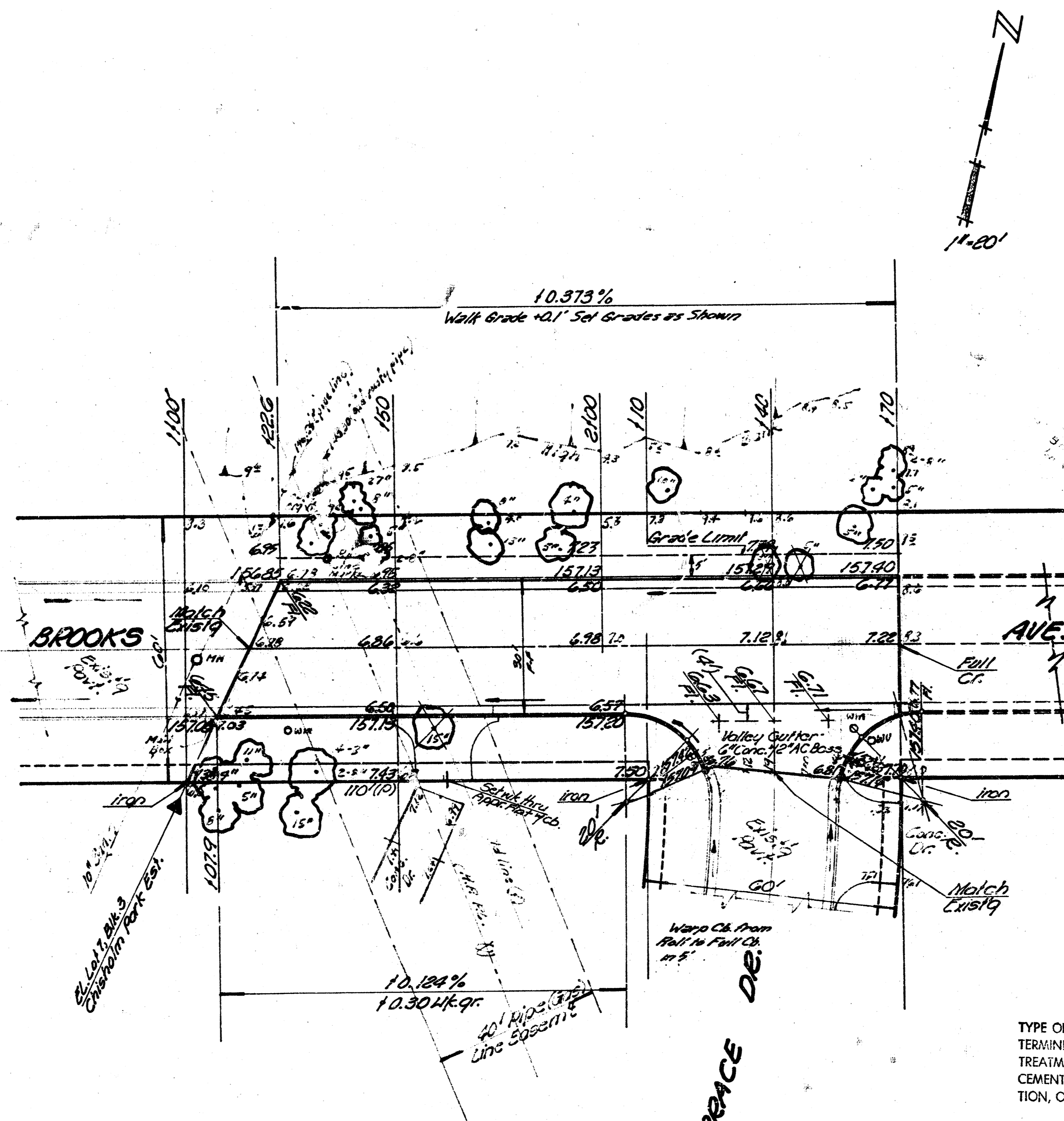
DETAIL OF TRANSVERSE CONSTRUCTION JOINTS



TRANSVERSE CONSTRUCTION JOINTS SHALL BE CONSTRUCTED IN FLEXIBLE BASE PAVEMENTS AT LOCATIONS WHERE PAVEMENT TEMPORARILY ENDS TO FACILITATE FUTURE PAVEMENT CONSTRUCTION AS SHOWN BY DETAIL. THE COST OF CONSTRUCTING THE TRANSVERSE CONSTRUCTION JOINTS SHALL NOT BE MEASURED OR PAID FOR DIRECTLY BUT SHALL BE INCLUDED IN THE BID PRICE FOR SQUARE YARDS OF ASPHALTIC CONCRETE PAVEMENT.

CITY OF WICHITA, KANSAS
 DEPARTMENT OF PUBLIC WORKS — ENGINEERING
 R. W. LINN CITY ENGINEER
 DATE Oct 1976 PROJ. NO. DAKS576071

B.M. 15921 N.E. Corner Concrete Step to House at 2949 N. Terrace
 15' Terrace



	Property	City
Excavation	32.5	188.5
+10%	3.3	19.0
Total	35.8 C.Y.	208.5 C.Y.
Compacted Fill	12.7	-
+10%	1.1	-
Total	11.8 C.Y.	-
Manipulation	202.5 S.Y.	932.9 S.Y.

General Notes
 1. Trees to be Removed are Marked thus . Except that any Tree Marked for Removal which in the Opinion of the Engineer can be Saved Shall be Saved.
 2. Transition Curves to be Paid as Std. Integral Cb.

SUB-GRADE
 TYPE OF SUB-GRADE TREATMENT SHALL BE DETERMINED BY THE FIELD ENGINEER. SUB-GRADE TREATMENT MAY CONSIST OF LIME TREATMENT, CEMENT TREATMENT, SUB-GRADE MODIFICATION, OR ANY COMBINATION OF THESE.

NOTE TO FIELD ENGINEER & CONTRACTOR
 Grade parking and clear right-of-way for proposed sidewalk. Compact fill in sidewalk areas. TO BE CONSTRUCTED BY "OTHERS".

BROOKS AVENUE
 C.L. Lot 7, Blk. 3, Chishalm Park Est. -
 C.L. Terrace Dr.
 30' Asph. Conc. Pavt. 4" Comb. Cb+Gtr.
 City of Wichita, Kansas
 R. W. Linn City Engineer
 Date Oct. 1976 Proj. No. DAK5576071

Survey Map
 Filed Jan
 Ex. 11/10/76
 Chas. W.