

55 T

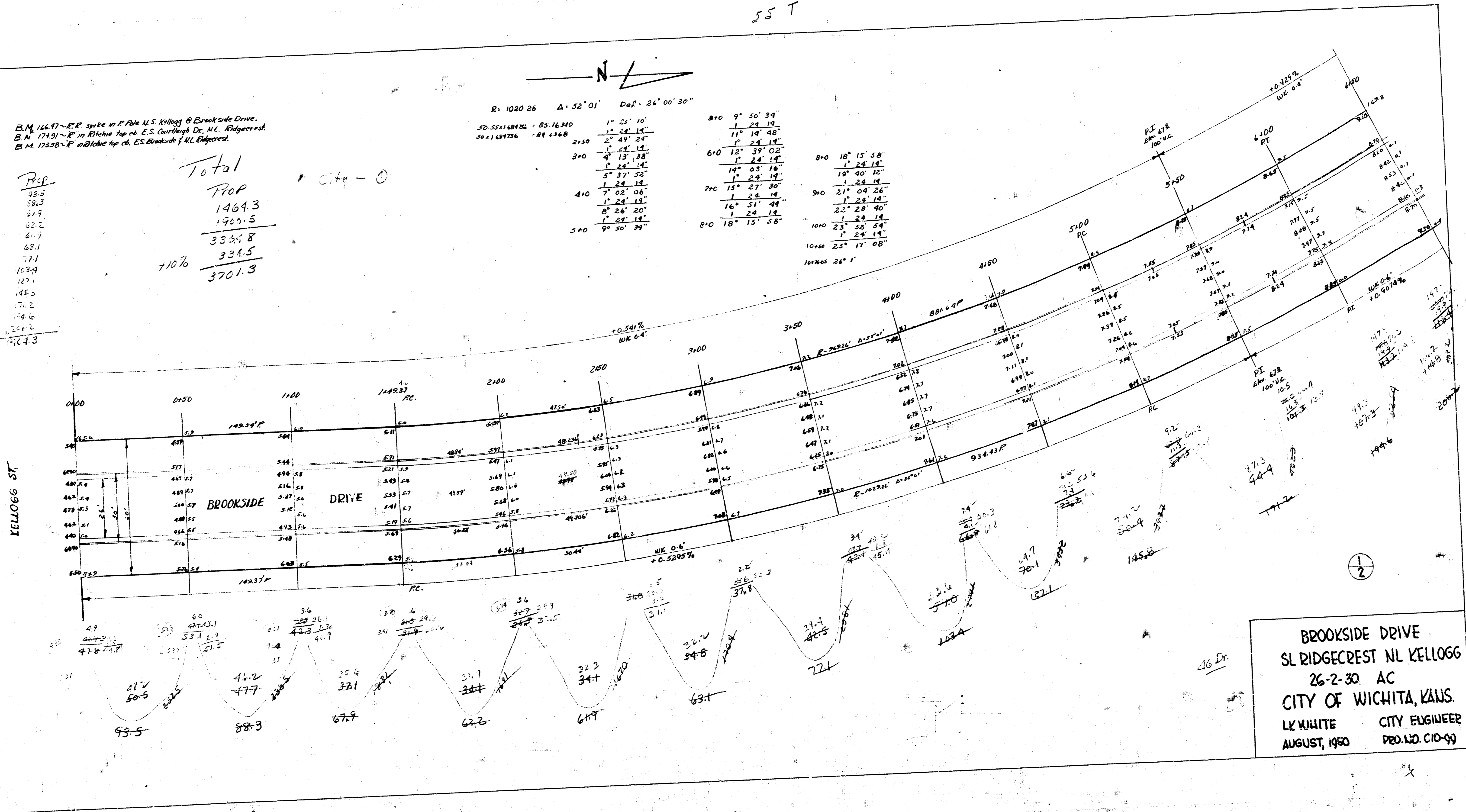
B.M. 16647 - R.R. Spike in P. Pole U.S. Kellogg @ Brookside Drive.
 B.M. 17491 - R in Richey Top of E.S. Courthouse Dr. N.L. Ridgecrest.
 B.M. 17338 - R in Richey Top of E.S. Brookside & N.L. Ridgecrest.

Prop.
 33.5
 58.3
 27.7
 42.2
 61.7
 63.1
 77.1
 103.4
 127.1
 145.5
 171.2
 194.6
 226.0
 264.3

Total
 Prop
 1464.3
 1920.5
 3384.8
 710%
 334.5
 3701.3

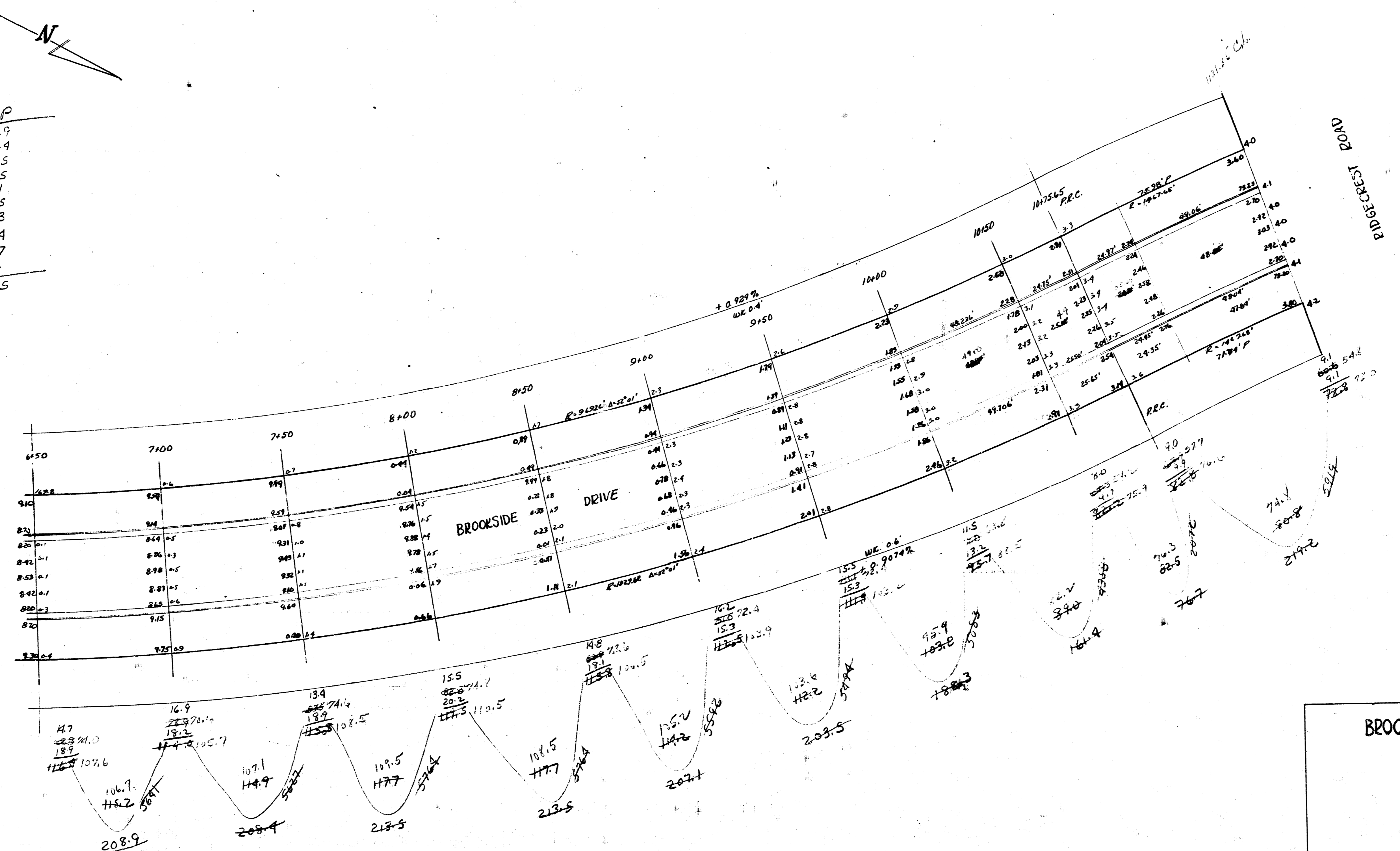
R. 1020.26 Δ. 52° 01' Def. 26° 00' 30"

2+50	1° 24' 10"	3+10	9° 50' 39"
3+00	1° 24' 14"	4+10	11° 19' 00"
4+00	1° 24' 14"	5+10	1° 24' 14"
5+00	1° 24' 14"	6+10	1° 24' 14"
	1° 24' 14"	7+10	1° 24' 14"
	1° 24' 14"	8+10	1° 24' 14"
	1° 24' 14"	9+10	1° 24' 14"
	1° 24' 14"	10+10	1° 24' 14"
	1° 24' 14"	11+10	1° 24' 14"
	1° 24' 14"	12+10	1° 24' 14"
	1° 24' 14"	13+10	1° 24' 14"
	1° 24' 14"	14+10	1° 24' 14"
	1° 24' 14"	15+10	1° 24' 14"
	1° 24' 14"	16+10	1° 24' 14"
	1° 24' 14"	17+10	1° 24' 14"
	1° 24' 14"	18+10	1° 24' 14"
	1° 24' 14"	19+10	1° 24' 14"
	1° 24' 14"	20+10	1° 24' 14"



BROOKSIDE DRIVE
 SL RIDGECREST NL KELLOGG
 26-2-30 AC
 CITY OF WICHITA, KANS.
 LK WHITE CITY ENGINEER
 AUGUST, 1950 PRO. NO. C10-99

Pref
 208.9
 208.4
 213.5
 213.5
 207.1
 203.5
 188.3
 161.4
 76.7
 219.2
 1900.5



BROOKSIDE DRIVE

4 2 4 15