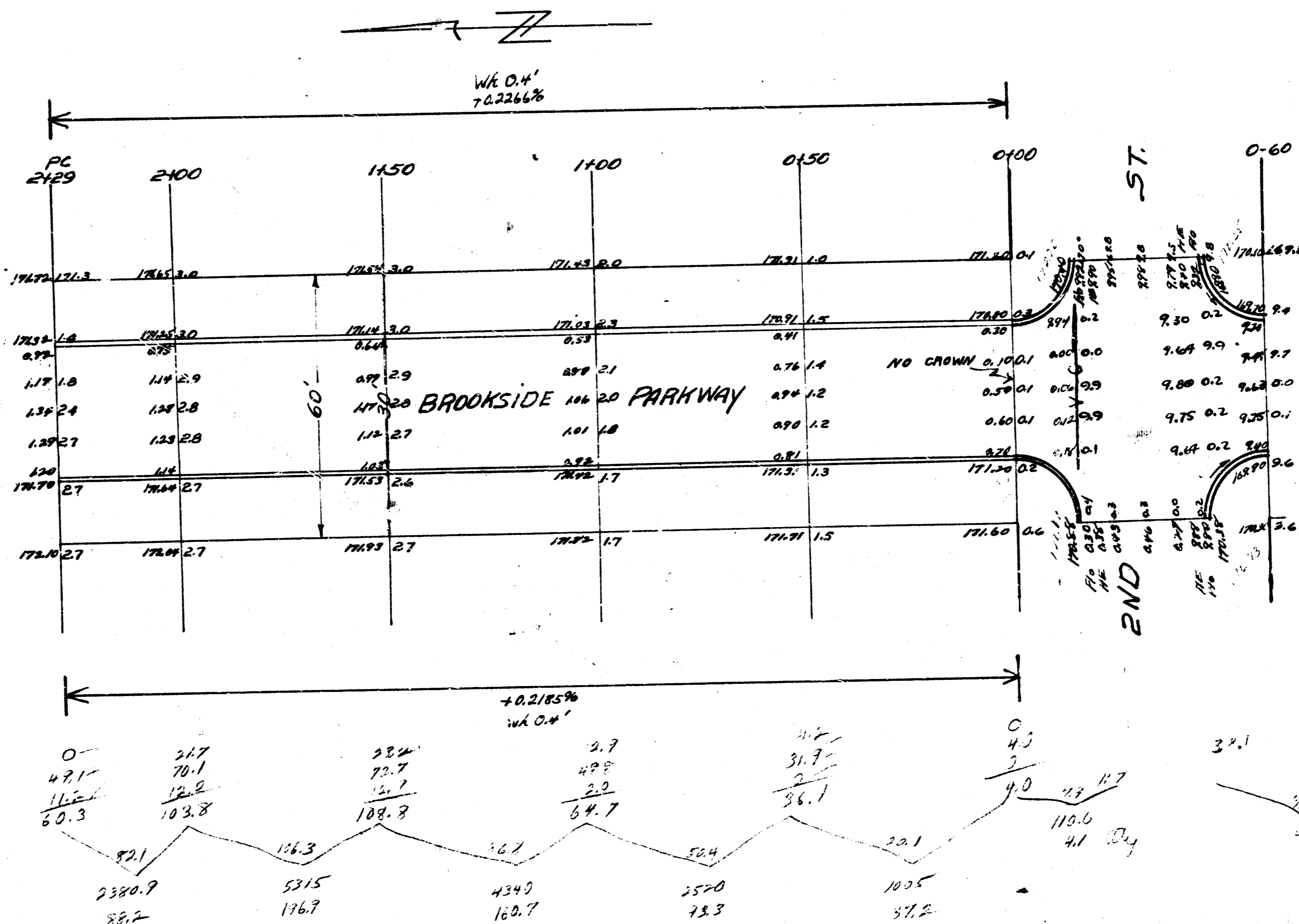


B.K. 1 G.B.

Note - All Stationing is made on a line 11 ft. West from the east line of Brookside Parkway West -  
 B.M. 177.12 SW Cor. Bridge Plow Central & Brookside  
 B.M. 171.80 Top Iron W.L. Brookside St. Rockwood  
 Grades set on C.B. line distances

Proposed  
 175.7  
 175.1  
 175.3  
 175.2  
 175.1  
 175.0

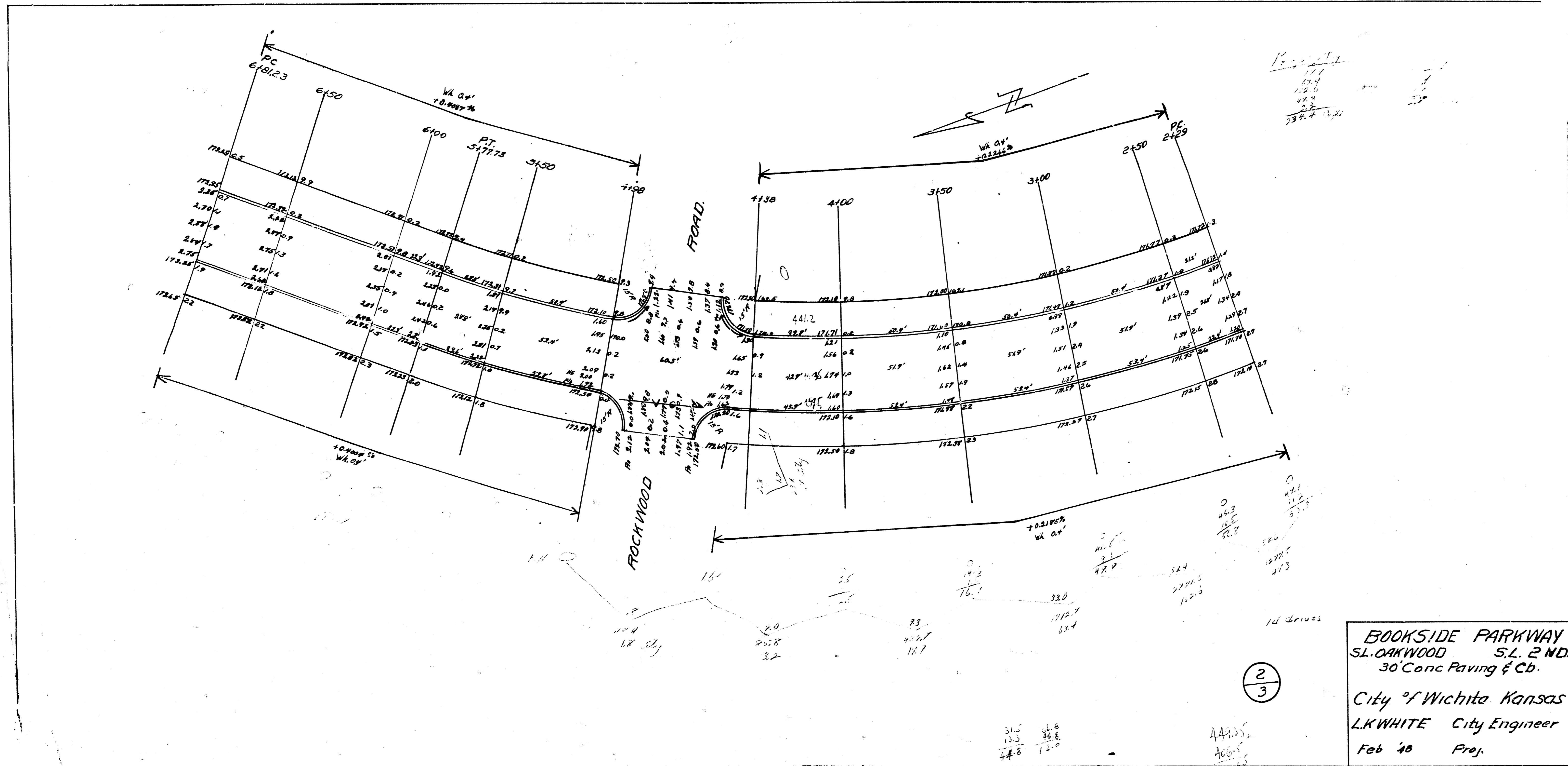


175.7  
 175.1  
 175.3  
 175.2  
 175.1  
 175.0

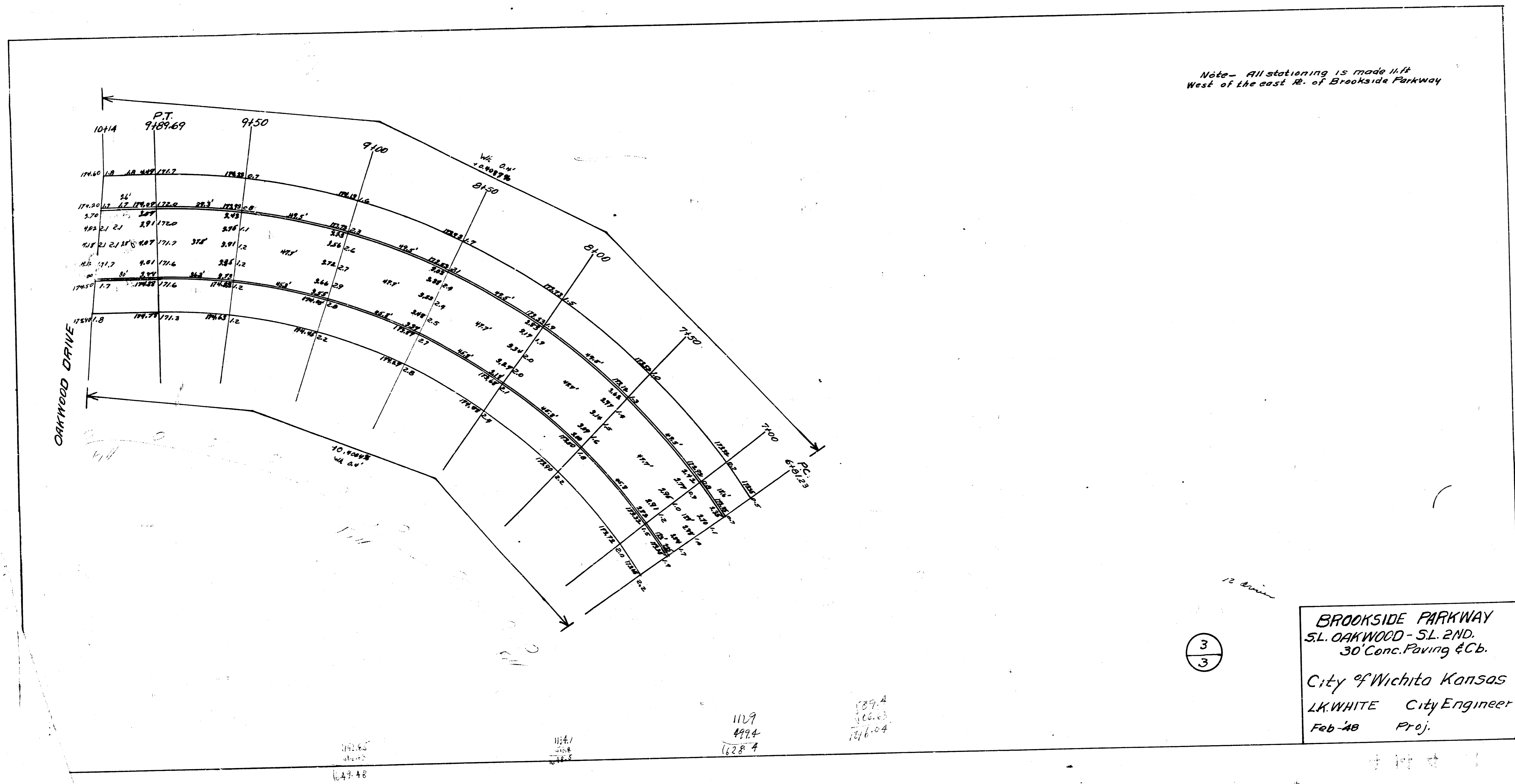
**BROOKSIDE PARKWAY**  
 SL OAKWOOD - SL END.  
 30' Conc. Paving & Curb

City of Wichita Kansas.  
 L.K. WHITE City Engineer  
 Feb. 48 Proj #

1/3



Note - All stationing is made 11 ft West of the east R. of Brookside Parkway



**BROOKSIDE PARKWAY**  
 S.L. OAKWOOD - S.L. 2ND.  
 30' Conc. Paving & Cb.  
 City of Wichita Kansas  
 L.K. WHITE City Engineer  
 Feb-48 Proj.

3  
3

1129  
 4974  
 6284

1121.65  
 454.48

1124.1  
 458.8