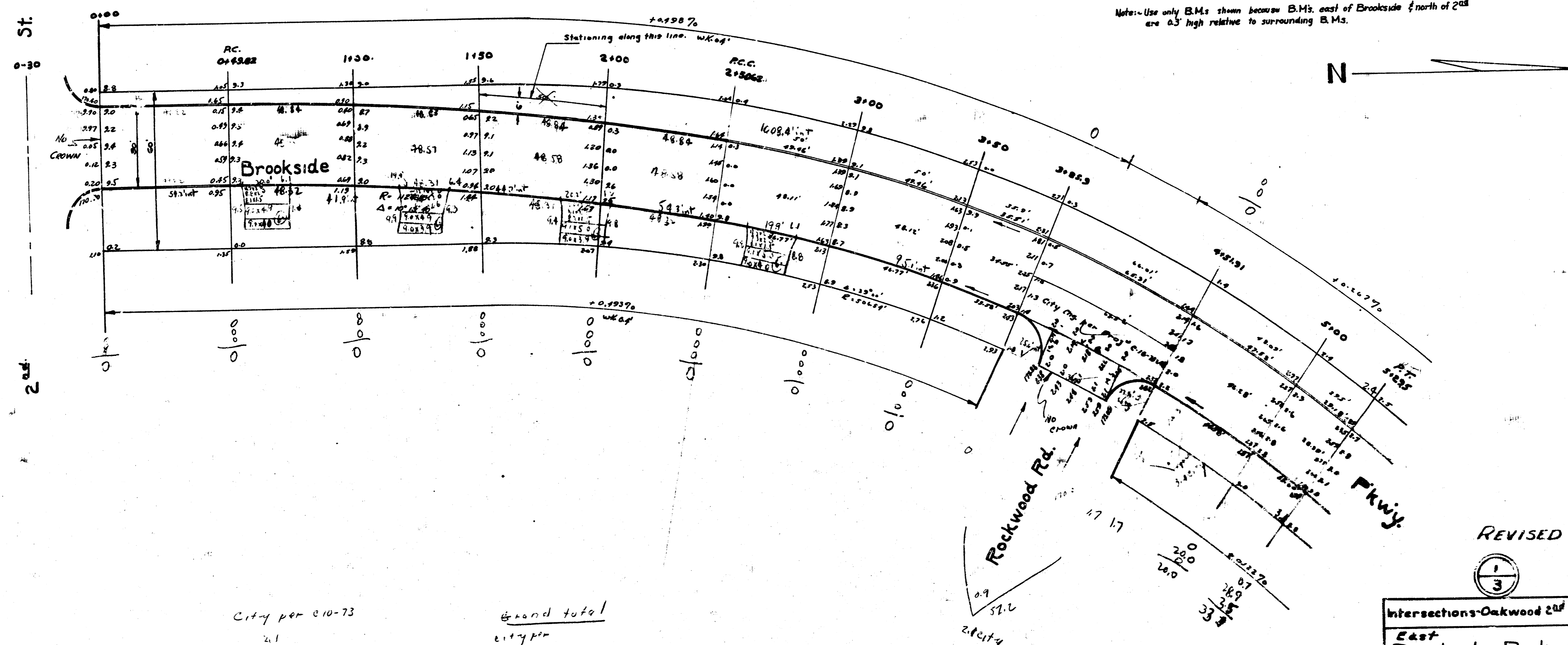


217

B.M. 1721-80" spike N.S. power pole 150ft East of E. Brookside Parkway - S.S. Central.
Note: Use only B.M.s shown because B.M.s east of Brookside & north of 2nd are 0.5' high relative to surrounding B.M.s.



City per C10-73
 21
 24
 25
 2170
 21 cu yds

Grand total
 City per
 C10-73
 21
 23
 24.0
 209.0 cu yds.

REVISED

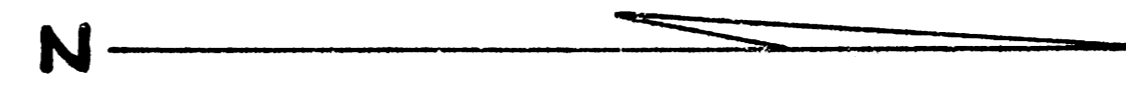
1/3

Intersections-Oakwood 2nd Proj. C1073
 East
 Brookside Parkway
 N.L. Second to S.L. Central
 30' Conc. & Curb
 City of Wichita, Kansas
 L. K. White - City Engineer
 May 1950 Private Job

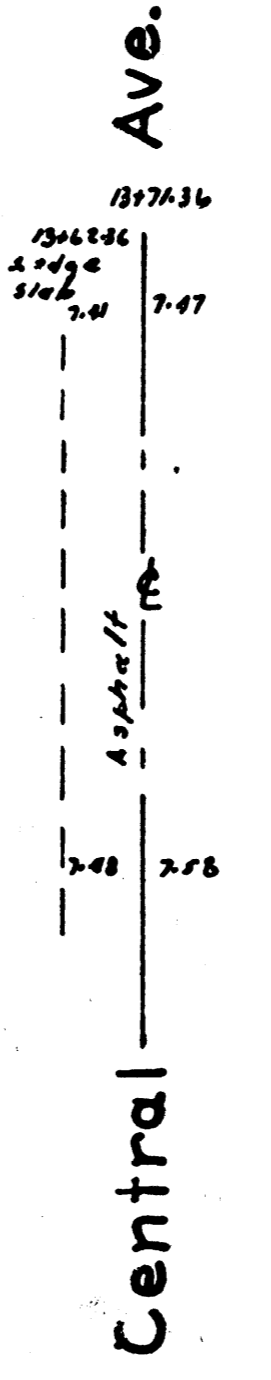
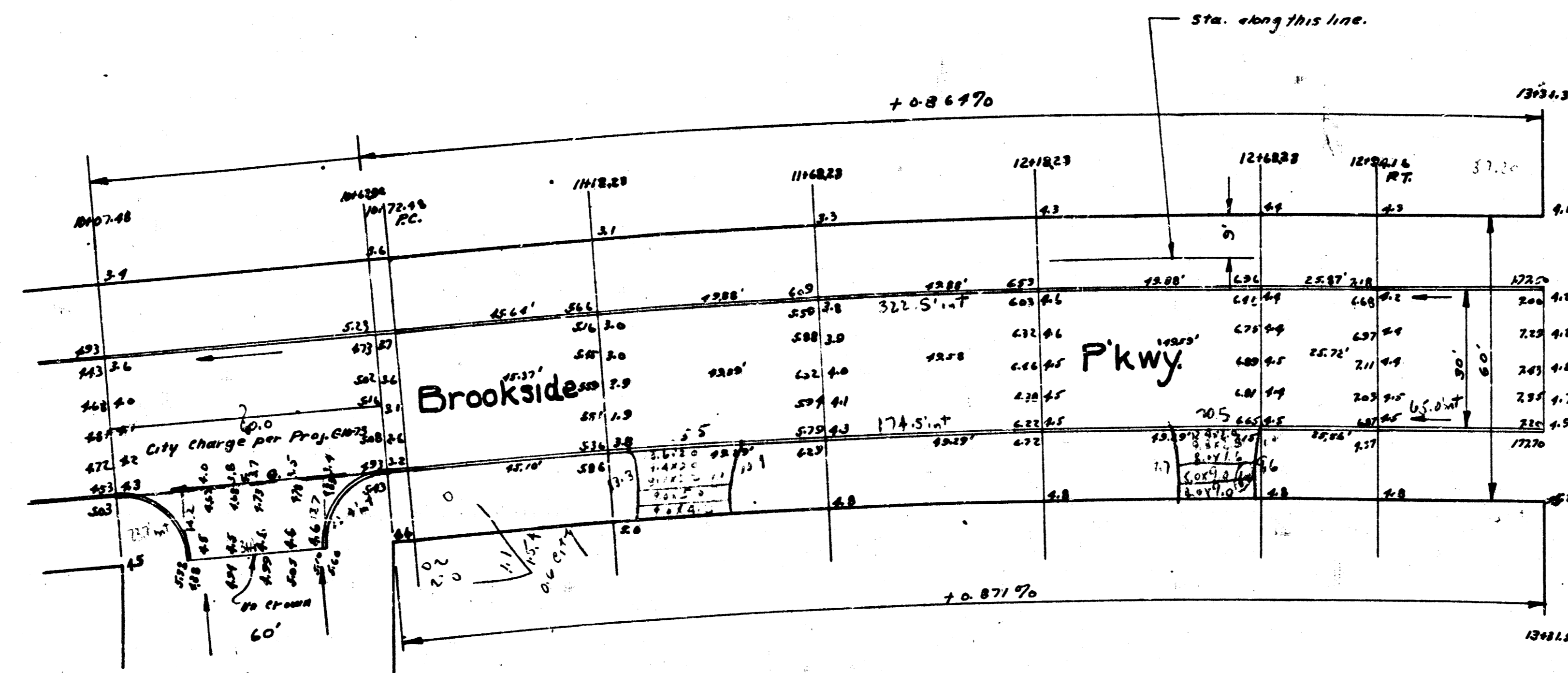
22

Blk 44

B.M. 17721 80' spike N.S. power pole 12' east of E. Brookside Parkway ~ S.S. Central.



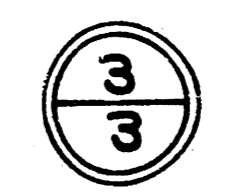
Note: Use only B.M.s shown because B.M.s east of Brookside & north of 2nd are 6.3' high relative to surrounding B.M.s.



City fee
 210.73
 43
 310
 1.7
 1107.0
 2104.43

Oakwood Drive

11-8823 Hedge 18' W of E. P.L.



4 1 1 43