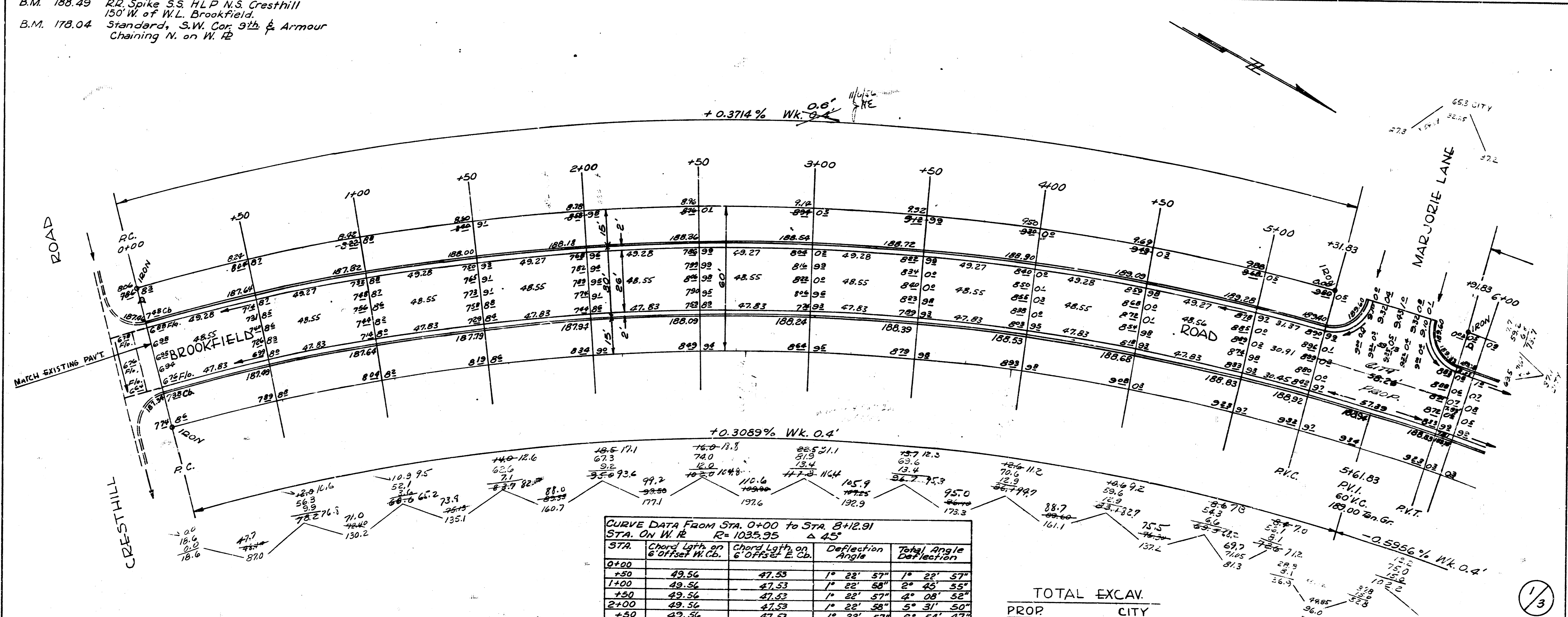


B.M. 188.49 R.R. Spike S.S. HLP N.S. Cresthill
 150' W. of W.L. Brookfield
 B.M. 178.04 Standard, S.W. Cor. 9th & Armour
 Chaining N. on W. 12



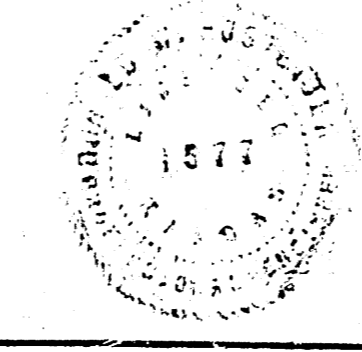
V.M. 136
 D.W.H.
 1/3

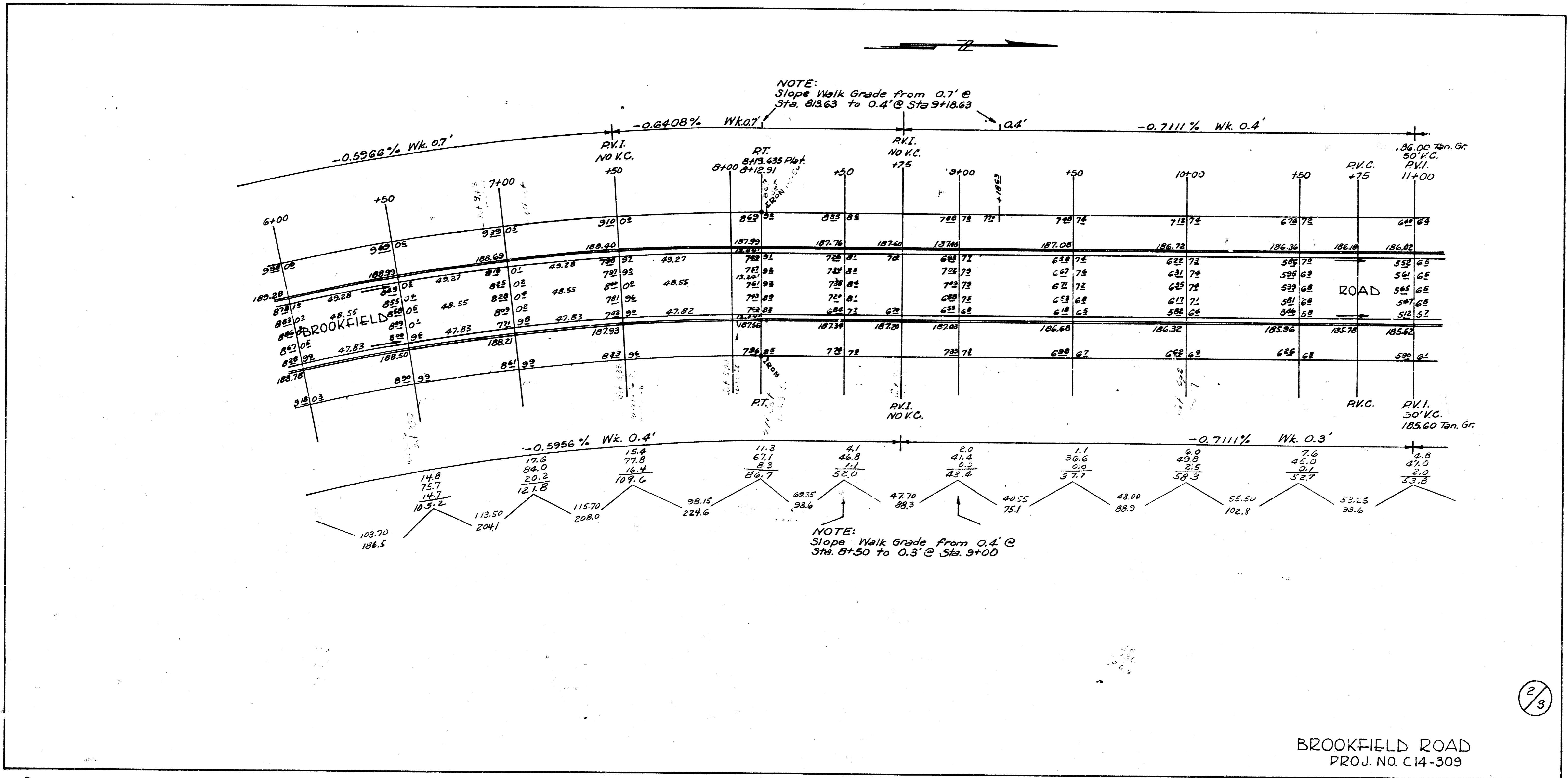
CURVE DATA FROM STA. 0+00 TO STA. 8+12.91
 STA. ON W. R. R=1035.95 Δ 45°

STA.	Chord Lgth on 6' Offset W. Co.	Chord Lgth on 6' Offset E. Co.	Deflection Angle	Total Angle Deflection
0+00	49.56	47.53	1° 22' 57"	1° 22' 57"
1+00	49.56	47.53	1° 22' 58"	2° 45' 55"
2+00	49.56	47.53	1° 22' 57"	4° 08' 52"
3+00	49.56	47.53	1° 22' 58"	5° 31' 50"
4+00	49.56	47.53	1° 22' 57"	6° 54' 47"
5+00	49.56	47.53	1° 22' 58"	8° 17' 45"
6+00	49.56	47.53	1° 22' 57"	9° 40' 42"
7+00	49.56	47.53	1° 22' 58"	11° 03' 40"
8+00	49.56	47.53	1° 22' 57"	12° 26' 37"
8+12.91	31.55	30.26	0° 52' 48"	13° 49' 35"
8+12.91	53.04	57.03	1° 22' 57"	15° 12' 32"
6+00	8.09	7.76	0° 13' 33"	16° 25' 29"
5+00	49.56	47.53	1° 22' 58"	17° 48' 27"
4+00	49.56	47.53	1° 22' 57"	19° 11' 24"
3+00	49.56	47.53	1° 22' 58"	20° 34' 22"
2+00	49.56	47.53	1° 22' 57"	21° 57' 19"
1+00	49.56	47.53	1° 22' 58"	23° 20' 17"
0+00	49.56	47.53	1° 22' 57"	24° 43' 14"
0+00	13.91	12.96	0° 22' 37"	25° 05' 51"

TOTAL EXCAV.
 PROP 3602.2
 CITY 102.4
 3704.6 Cu. Yd.

BROOKFIELD ROAD
 N. CRESTHILL ROAD-S. L. NINTH ST.
 26'-2'-30' A.C.
 CITY OF WICHITA, KANS.
 B.E. SMITH CITY ENGINEER
 NOV. 1954 PROJ. NO. C14-309





BROOKFIELD ROAD
 PROJ. NO. C14-309

