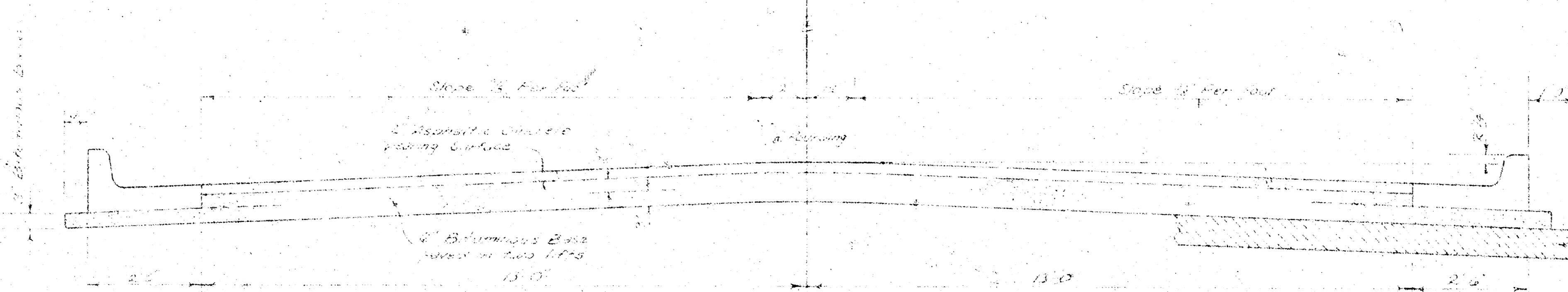


BRUNSWICK LANE
E.L. NORTHWEST PARKWAY TO S.L. MORGANTOWN LANE

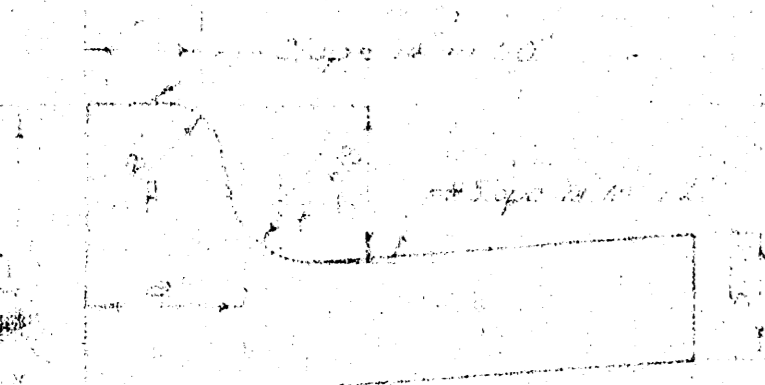


TYPICAL SECTION

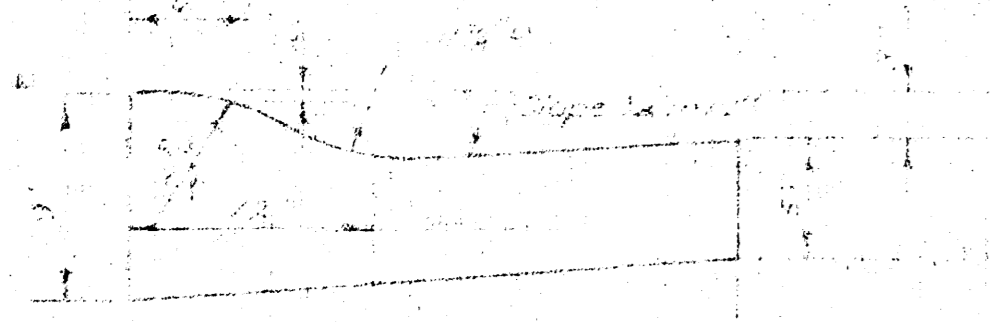
3" ASPHALTIC CONCRETE PAVEMENT WITH BITUMINOUS BASE

The A.C. pavement between the Curb and Gutter shall be paid as 3" A.C. Pavement (6" Bituminous Base). The Bituminous Base under the Curb and Gutter shall be paid as 3" Bituminous Base.

COVERED CURB & GUTTER



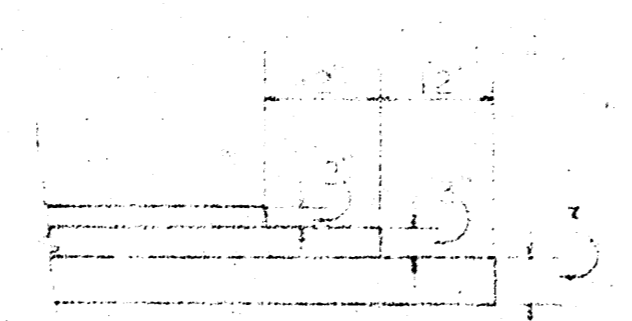
ROLL TYPE CURB & GUTTER



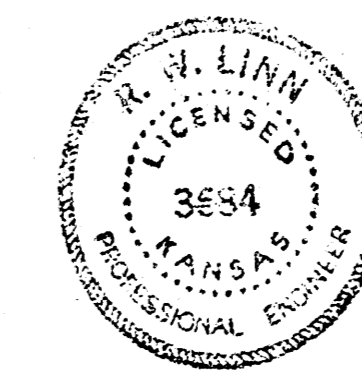
A TACK COAT OF EMULSIFIED ASPHALT (SS-1H) SHALL BE APPLIED AT AN APPROXIMATE RATE OF 0.05 GALLONS PER SQ. YD. BETWEEN LIFTS OF ASPHALTIC MATERIALS WHEN ORDERED BY THE ENGINEER. TACK COAT WILL NOT BE PAID FOR DIRECTLY AND SHALL BE CONSIDERED AS SUBSIDIARY TO PRICE BID FOR ASPHALTIC PAVEMENT.

BITUMINOUS BASE AND ASPHALTIC CONCRETE WEARING SURFACE SHALL BE PLACED WITH A LAYDOWN MACHINE HAVING AUTOMATIC ELECTRONIC CONTROLS FOR CROWN AND GRADE. CONSTRUCTION JOINTS IN EACH LIFT SHALL BE STAGGERED A MINIMUM DISTANCE OF 1' WITH JOINTS IN PRECEDING LIFTS AND SUCH THAT A JOINT WILL BE CONSTRUCTED ON THE PAVEMENT CENTERLINE IN THE TOP LIFT.

DETAIL OF TRANSVERSE CONSTRUCTION JOINTS



TRANSVERSE CONSTRUCTION JOINTS SHALL BE CONSTRUCTED IN FLEXIBLE BASE PAVEMENTS AT LOCATIONS WHERE PAVEMENT TEMPORARILY ENDS TO FACILITATE FUTURE PAVEMENT CONSTRUCTION AS SHOWN BY DETAIL. THE COST OF CONSTRUCTING THE TRANSVERSE CONSTRUCTION JOINTS SHALL NOT BE MEASURED OR PAID FOR DIRECTLY BUT SHALL BE INCLUDED IN THE BID PRICE FOR SQUARE YARDS OF ASPHALTIC CONCRETE PAVEMENT.

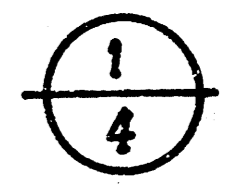


CITY OF WICHITA, KANSAS

DEPARTMENT OF PUBLIC WORKS — ENGINEERING

R. W. LINN CITY ENGINEER

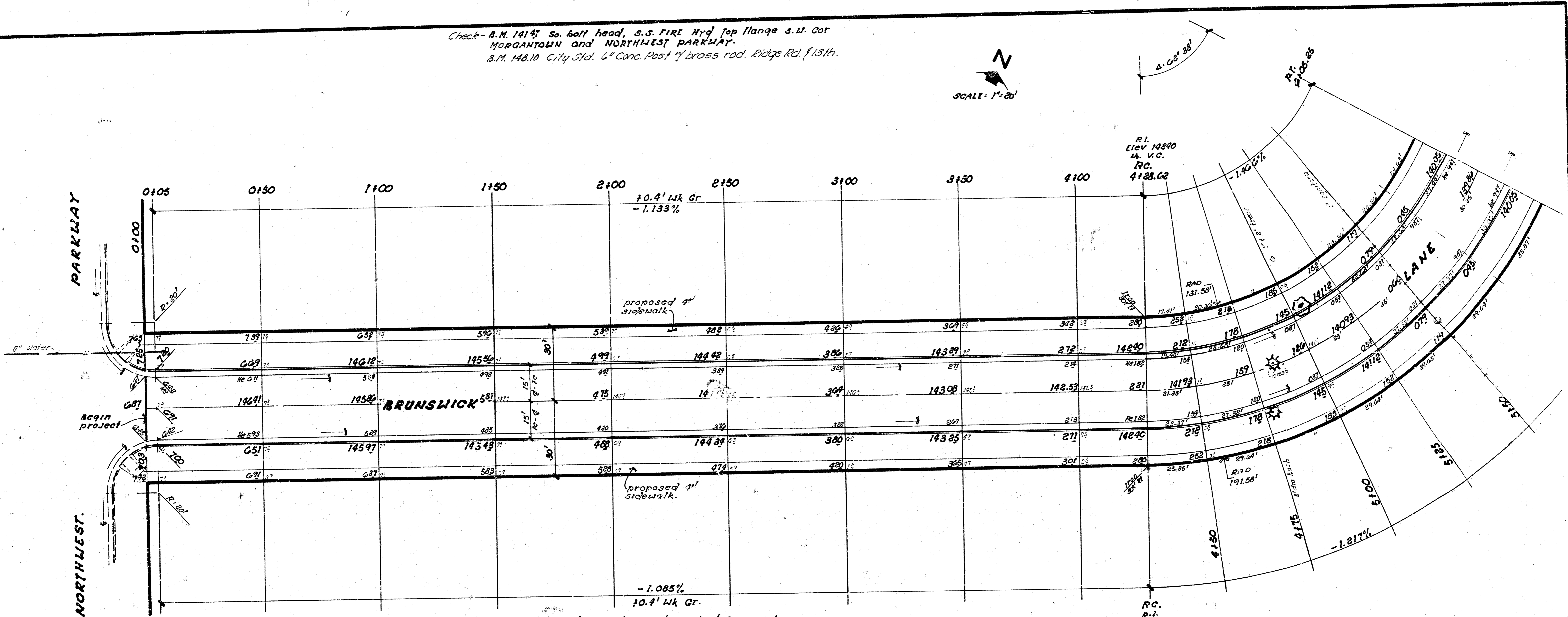
DATE: *August, 76* PROJ. NO. **DAKS 576002**



B-M

Check - A.M. 19197 So. half head, S.S. FIRE Hyd top flange S.W. Cor
MORGANTOWN and NORTHWEST PARKWAY.
S.M. 148.10 City Std. 6" Conc. Post w/ brass rod. Ridge Rd. f. 13.1h.

SCALE: 1" = 20'



SURVEY CHECKED BY D.D. 8/2/08
 DRAWN BY J.M. 8/2/08
 EXAMINED BY J.M. 8/2/08
 CHECKED BY J.M. 8/2/08

CAUTION
UNDERGROUND UTILITIES
WARNING: DO NOT DISTURB
TELEPHONE, GAS, WATER

Δ = 62°38' R = 161.68' T = 98.31' L = 116.63' LC = 107.97'

CURVE DATA BASED ON 101.58' RAD Δ = 62°38'

STA.	ARC	CHORD	CHORD LENGTH	DEFLECTION	TOTAL DEFLECTION
4+28.62					0°00'00"
4+50	21.38'	18.32'	26.90'	3°47'20"	3°47'20"
4+75	25.00'	21.42'	28.53'	4°25'57"	8°13'23"
5+00	"	"	"	"	12°39'20"
5+25	"	"	"	"	17°05'17"
5+50	"	"	"	"	21°31'14"
5+75	"	"	"	"	25°57'11"
6+00	25.00'	21.42'	28.53'	4°25'57"	30°23'07"
6+25.25	5.25'	4.50'	6.00'	0°33'53"	31°19'19"

NOTE: paving contractor to co-ordinate construction, with storm sewer contractor of proposed S.U.S #118.

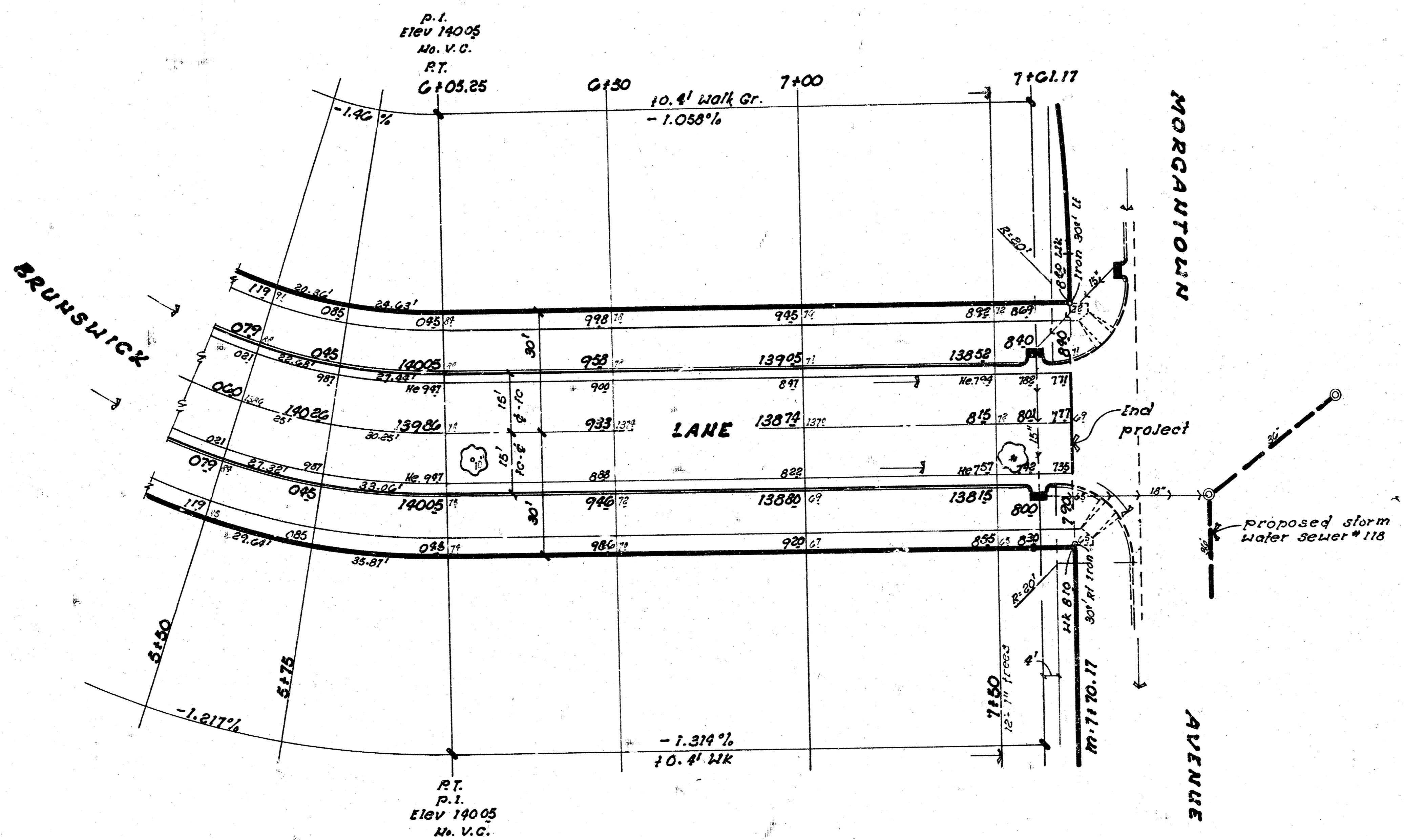
PROPERTY
 EXCAVATION 168.3 CU YDS
 110% 168.3 -
 185.7 CU YDS
 COMP FILL 465.8 CU YDS
 110% 465.8 -
 512.4 CU YDS

SUB-GRADE
 TYPE OF SUB-GRADE TREATMENT SHALL BE DETERMINED BY THE FIELD ENGINEER. SUB-GRADE TREATMENT MAY CONSIST OF LIME TREATMENT, CEMENT TREATMENT, SUB-GRADE MODIFICATION, OR ANY COMBINATION OF THESE.

NOTE TO FIELD ENGINEER & CONTRACTOR
 Grade parking and clear right-of-way for proposed sidewalks. Compact fill in sidewalk area. TO BE CONSTRUCTED BY OTHERS.

BRUNSWICK LANE
 E.L. NORTHWEST PARKWAY TO
 S.L. MORGANTOWN LANE.
CITY OF WICHITA, KANSAS
 (31' B-B) C⁺ Asphalt Base - 2"
 Asphaltic Conc wearing surface.
 with Comb curb & gutter.
 R. W. LINN CITY ENGINEER
 Date: August, 76 Proj No. DAR551G002

2/4



NOTE: clusters of 1" & 2" trees removed to be paid as bio price for small trees removed.

3
4
proj No. DARS 57G002