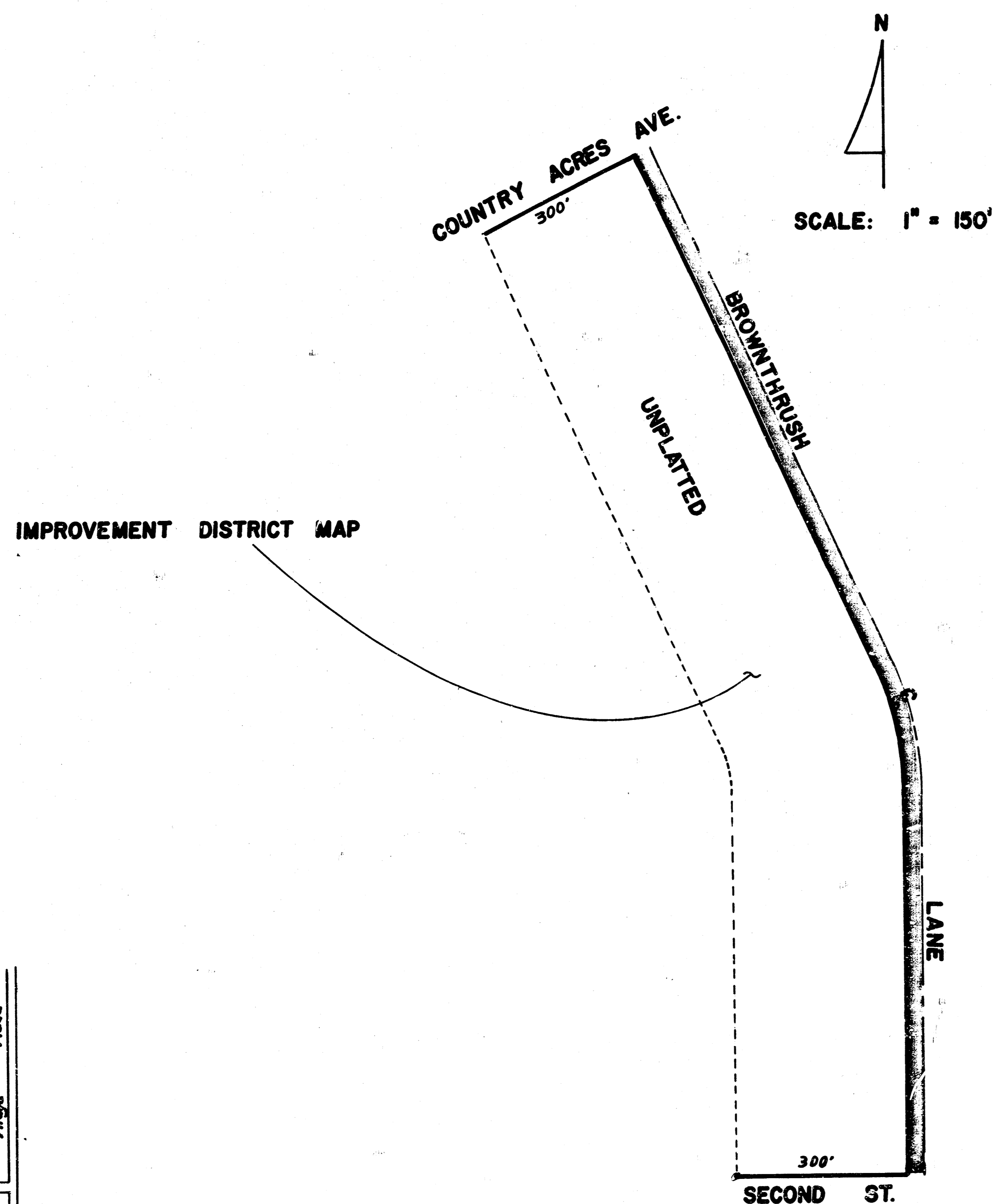


WEST HALF BROWNTHRUSH LANE

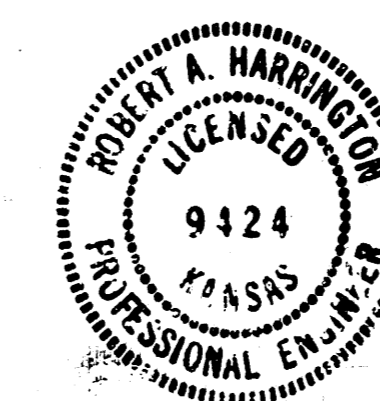
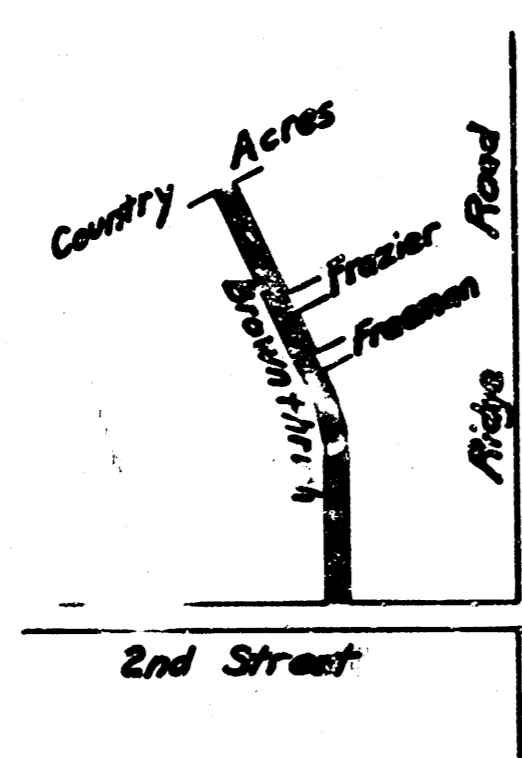
FROM THE NORTH LINE OF SECOND STREET TO THE SOUTH LINE OF COUNTRY ACRES AVENUE

GENERAL NOTES:

1. "DEFINED REMOVAL LINE" SHALL MEAN THAT LINE AS SHOWN ON THE PLAN (FROM STA. 0+99.7 TO STA. 13+22.72 AND FROM STA. 14+25.72 TO STA. 19+35.5) AT AND WEST OF WHICH EXISTING PAVEMENT SHALL BE SAWed AND REMOVED TO FACILITATE CENTERLINE JOINT CONSTRUCTION. SAWed JOINT AND PAVEMENT REMOVED AT AND WEST OF THE DEFINED REMOVAL LINE SHALL BE SUBSIDIARY TO OTHER BID ITEMS.
2. CENTERLINE GRADES OF THE PROPOSED NEW ASPHALT PAVEMENT SHALL BE SET AS SHOWN ON PLAN. PROPOSED NEW ASPHALT SHALL MATCH THE EXISTING PAVEMENT AT THE DEFINED REMOVAL LINE, EXCEPT AT LOCATIONS OF SIGNIFICANT DETERIORATION OR UNEVENNESS OF THE ADJACENT EXISTING PAVEMENT. AT SUCH LOCATIONS, THE FIELD ENGINEER SHALL EXAMINE THE EXISTING PAVEMENT AND OUTLINE THE ADDITIONAL PAVEMENT EAST OF THE DEFINED REMOVAL LINE THAT MUST BE REMOVED TO PROVIDE A SMOOTH CROWN AND PREVENT PONDING. NOT MORE THAN 200 S.Y. OF EXISTING PAVEMENT EAST OF THE DEFINED REMOVAL LINE SHALL BE SO REMOVED. THE CONTRACTOR SHALL NOT REMOVE ANY PAVEMENT EAST OF THE DEFINED REMOVAL LINE EXCEPT AT THE SPECIFIC DIRECTION OF THE FIELD ENGINEER.



Location Map
Scale 1" = 1000'



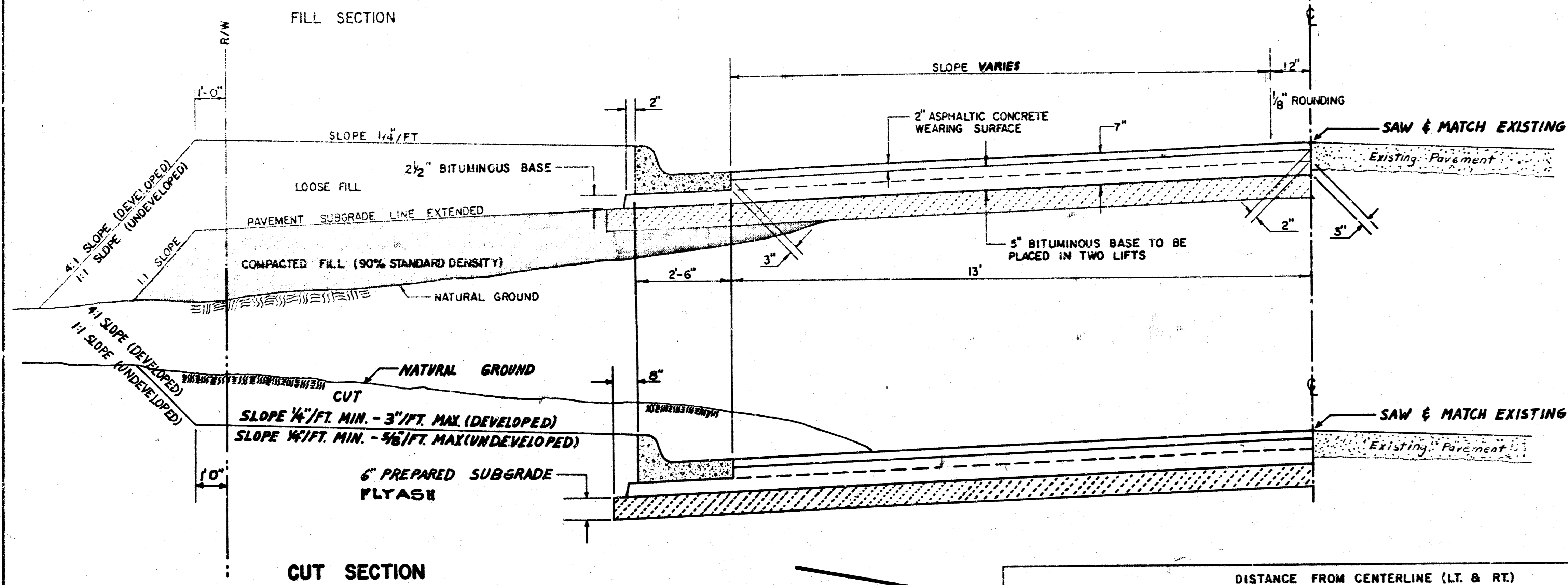
PROJECT NO.	472-76-245-81370-000-000-001		
CITY OF WICHITA	M. E. LINDEBAK	CITY ENGINEER	
LANDCO ENGINEERING	CONSULTANT ENGINEER		1/9

TYPICAL PAVEMENT DETAILS

2/9

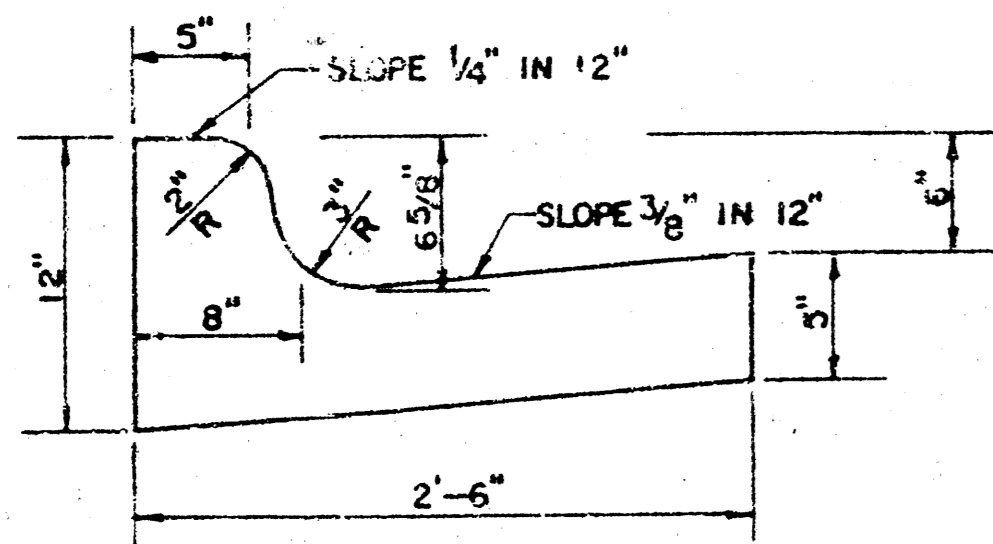
WEST HALF BROWNTHRUSH - N.L. SECOND TO S.L. COUNTRY ACRES

TRANSVERSE SECTION

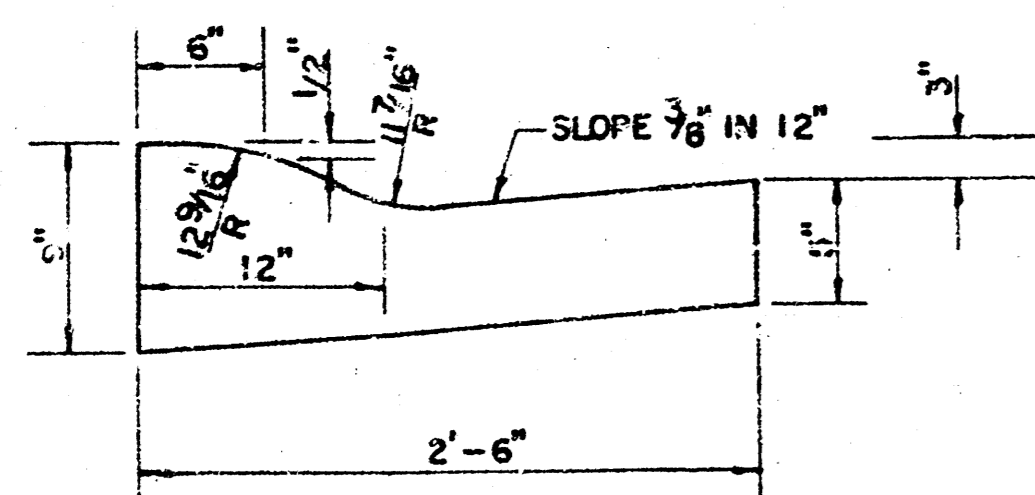


	DISTANCE FROM CENTERLINE (LT. & RT.)											
	0'	2'	4'	6'	7.5'	10'	12'	13'	15'	15.5'	15.67'	16.17'
A. TOP OF CURBS TO TOP OF SURFACE LIFT	0.10	0.14	0.21	0.27	0.32	0.39	0.46	0.49	—	—	—	—
B. TOP OF CURBS TO TOP OF UPPER BASE LIFT	0.27	0.31	0.38	0.44	0.49	0.56	0.63	0.66	—	—	—	—
C. TOP OF CURBS TO TOP OF LOWER BASE LIFT	0.44	0.48	0.57	0.64	0.70	0.79	0.87	0.90	0.98	1.00	1.00	—
D. TOP OF CURBS TO TOP OF SUBGRADE	0.69	0.73	0.80	0.87	0.93	1.01	1.08	1.12	1.19	1.21	1.21	1.23

COMBINED CURB & GUTTER



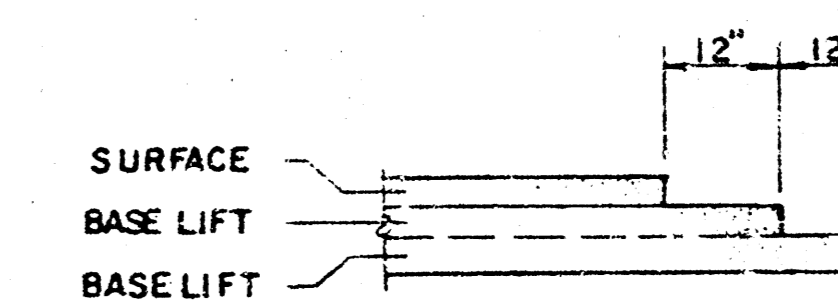
ROLL TYPE COMBINED CURB & GUTTER



GENERAL NOTES

- 1) THE ASPHALTIC CONCRETE PAVEMENT BETWEEN THE COMBINED CURB AND GUTTER SHALL BE PAID AS SQUARE YARDS OF 7" ASPHALTIC CONCRETE (5" BITUMINOUS BASE).
- 2) THE BITUMINOUS BASE UNDER AND BEHIND THE COMBINED CURB AND GUTTER SHALL BE PAID AS SQUARE YARDS OF 2 1/2" BITUMINOUS BASE.
- 3) A TACK COAT OF EMULSIFIED ASPHALT (SC-1H OR CSS-1H) SHALL BE APPLIED AT AN APPROXIMATE RATE OF 0.05 GALLONS PER SQUARE YARD BETWEEN EACH LIFT OF ASPHALTIC MATERIAL.
- 4) BITUMINOUS BASE AND ASPHALTIC CONCRETE WEARING SURFACE SHALL BE PLACED WITH A LAYDOWN MACHINE HAVING AUTOMATIC CONTROLS FOR LINE AND GRADE.
- 5) CONSTRUCTION JOINTS IN EACH LIFT SHALL BE STAGGERED A MINIMUM DISTANCE OF ONE (1) FOOT FROM JOINTS IN PRECEDING LIFTS AND PLACED SO THAT A JOINT WILL BE CONSTRUCTED ON THE CENTERLINE OF THE TOP LIFT.
- 6) CONTRACTOR TO BID ONLY ONE SUBGRADE TREATMENT ALTERNATE WHEN ALTERNATES ARE PROVIDED IN THE PROPOSAL AND CONTRACT. THE ALTERNATE CHOSEN BY THE SUCCESSFUL BIDDER SHALL BE USED IN CONSTRUCTING THIS PROJECT.

TRANSVERSE CONSTRUCTION JOINTS



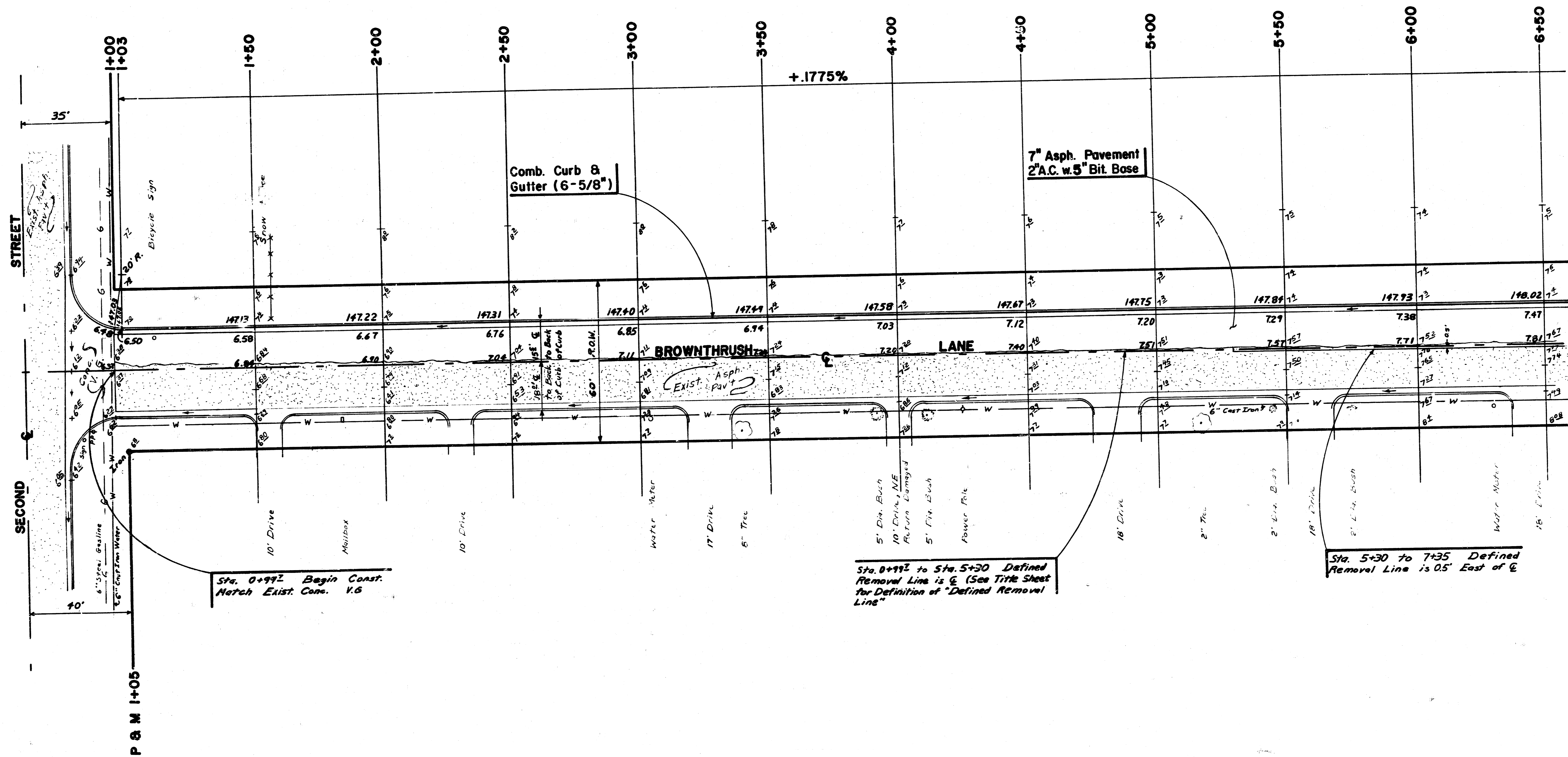
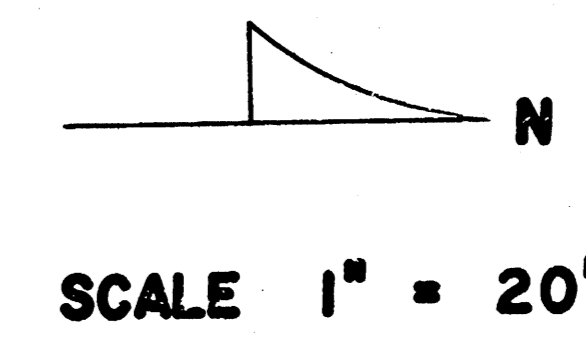
TRANSVERSE CONSTRUCTION JOINTS SHALL BE CONSTRUCTED IN FLEXIBLE BASE PAVEMENTS AT LOCATIONS WHERE PAVEMENT JOINTS EXISTING FLEXIBLE BASE PAVEMENT AS SHOWN BY THE DETAIL. ALL COSTS ASSOCIATED WITH THE CONSTRUCTION OF THE TRANSVERSE JOINT SHALL BE INCLUDED IN THE BID PRICE FOR SQUARE YARDS 7" ASPHALTIC CONCRETE (5" BITUMINOUS BASE).

7 INCH RESIDENTIAL ASPHALTIC CONCRETE
PAVEMENT WITH 5 INCH BITUMINOUS BASE
CITY OF WICHITA, KANSAS
PROJECT NUMBER
472-76-245-81370-000-000-001

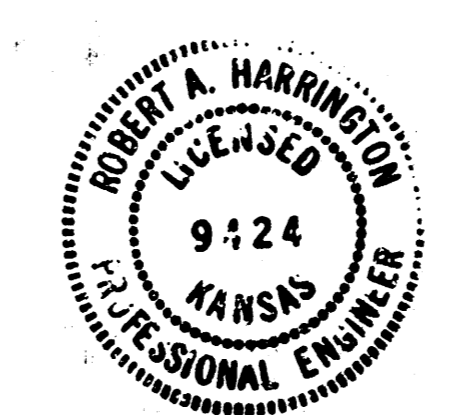
10 1 5 2

FILMED FROM THE BEST AVAILABLE COPY

B.M. El. 146.62 "4" in YC, N-end return, NE corner Brownthrus & 2nd Street



EXCAVATION	1006.2	C.Y.
+ 10%	100.6	C.Y.
Total	1106.8	C.Y.
MANIPULATION	3511.1	S.Y.



WEST HALF BROWNTHRUSH-N.L. SECOND TO S.L. COUNTRY ACRES
 PROJECT NO. 472-76-245-81370-000-000-001
 CITY OF WICHITA M. E. LINDEBAK CITY ENGINEER
 LANDCO ENGINEERING CONSULTANT ENGINEER
 BOOK DS2 DRAWN BY RH DATE 2/85

FILMED FROM THE BEST AVAILABLE COPY

B.M. El. 147.16 "4" in TC, E-side Brownthrush at NW corner Lot 5, Block P, Meadowview Estates Add. (360 N. Brownthrush)
 B.M. El. 147.54 "W" in "COFH 1976" on TC at E-end return, SE corner Freeman & Brownthrush

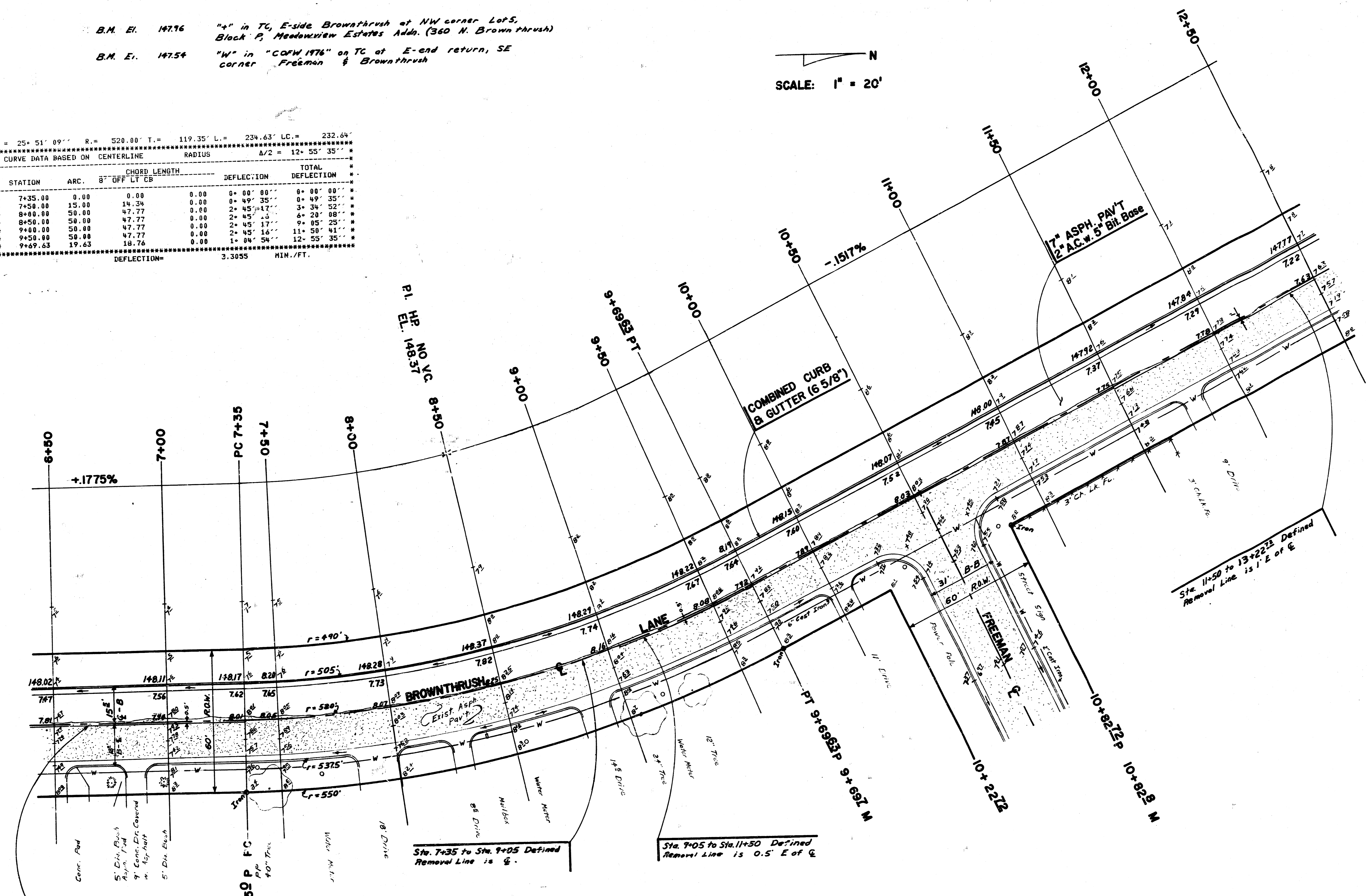
N
 SCALE: 1" = 20'

Δ = 25° 51' 09" R = 520.00' T = 119.35' L = 234.63' LC = 232.64'

 * CURVE DATA BASED ON CENTERLINE RADIUS Δ/2 = 12° 55' 35" *

* STATION	ARC	CHORD LENGTH 8" OFF LT CB	DEFLECTION	TOTAL DEFLECTION
* 7+35.00	0.00	0.00	0° 00' 00"	0° 00' 00"
* 7+50.00	15.00	14.34	0° 49' 35"	0° 49' 35"
* 8+00.00	50.00	47.77	0° 00' 00"	3° 34' 52"
* 8+50.00	50.00	47.77	2° 45' 17"	6° 20' 08"
* 9+00.00	50.00	47.77	0° 00' 00"	9° 05' 25"
* 9+50.00	50.00	47.77	2° 45' 17"	11° 50' 41"
* 9+59.63	19.63	18.76	1° 04' 54"	12° 55' 35"

 DEFLECTION = 3.3055 MIN./FT.



Sta. 5+30 to Sta. 7+35 Defined
 Removal Line is 0.5' E. of C.

Sta. 7+35 to Sta. 9+05 Defined
 Removal Line is C.

Sta. 9+05 to Sta. 11+50 Defined
 Removal Line is 0.5' E. of C.

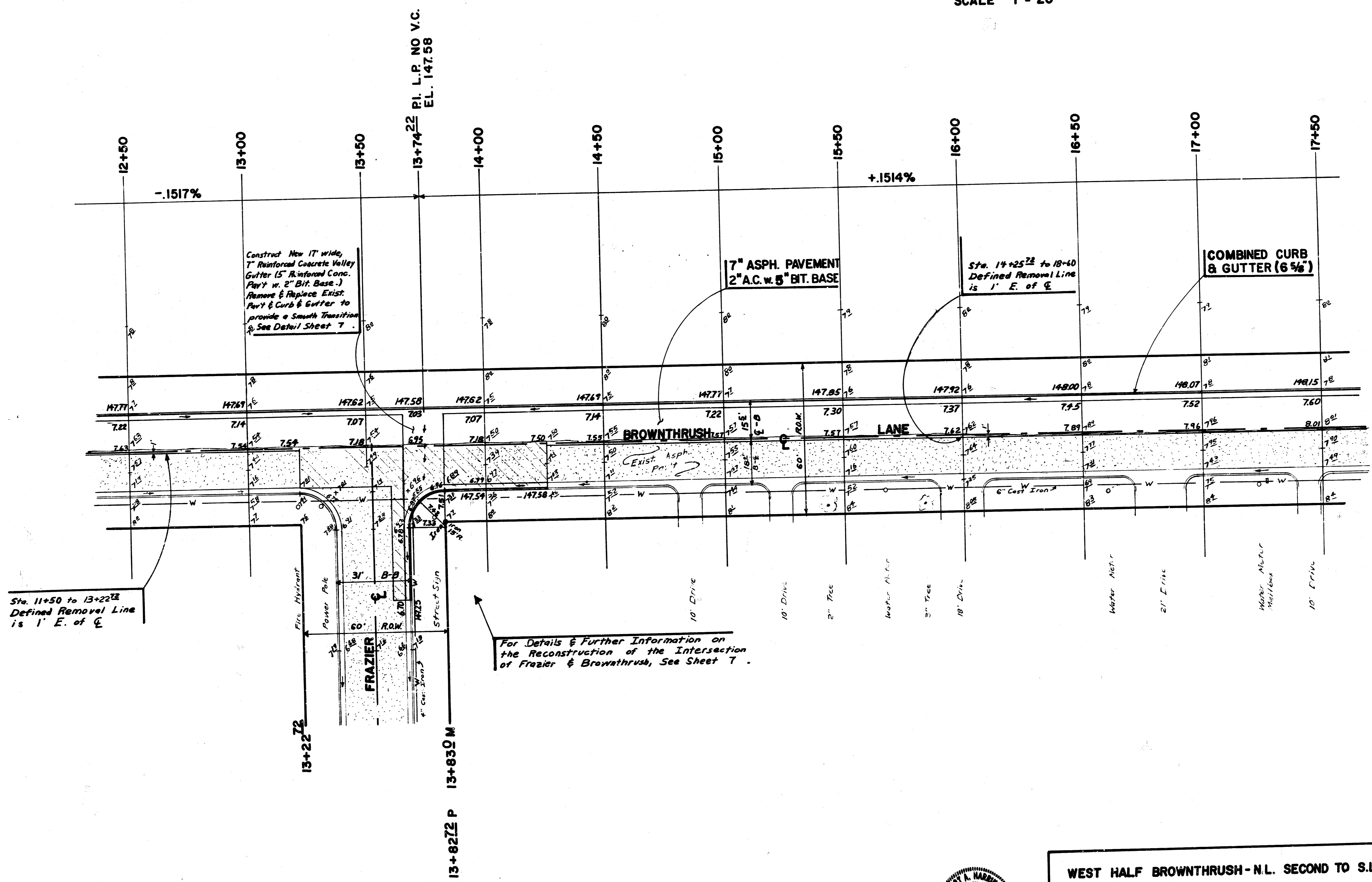
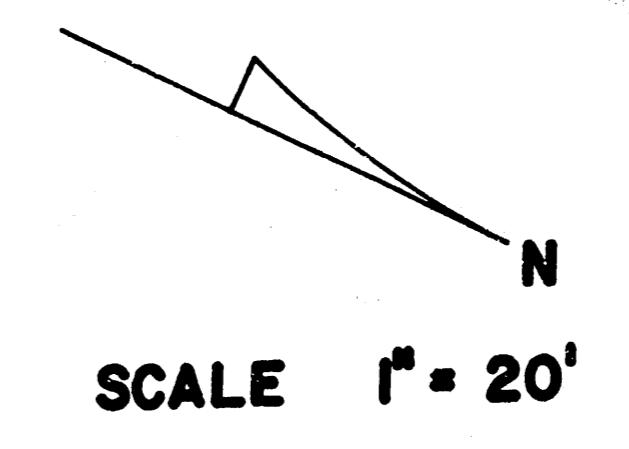
Sta. 11+50 to 13+22.5 Defined
 Removal Line is 1' E. of C.



WEST HALF BROWNTHRUSH - N.L. SECOND TO S.L. COUNTRY ACRES
 PROJECT NO. 472-76-245-81370-000-000-001
 CITY OF WICHITA M. E. LINDEBAK CITY ENGINEER
 LANDCO ENGINEERING CONSULTANT ENGINEER
 BOOK DS2 DRAWN BY RH DATE 2/85

FILMED FROM THE BEST AVAILABLE COPY

B.M. El. 149.56 "M" in "ALABAMA" on Fire Hydrant, SE corner Frazier & Brownthrush
B.M. El. 147.69 "+" on TC of N-end Drive Return at 524 N. Brownthrush



Sta. 11+50 to 13+22.22
Defined Removal Line
is 1' E. of C.

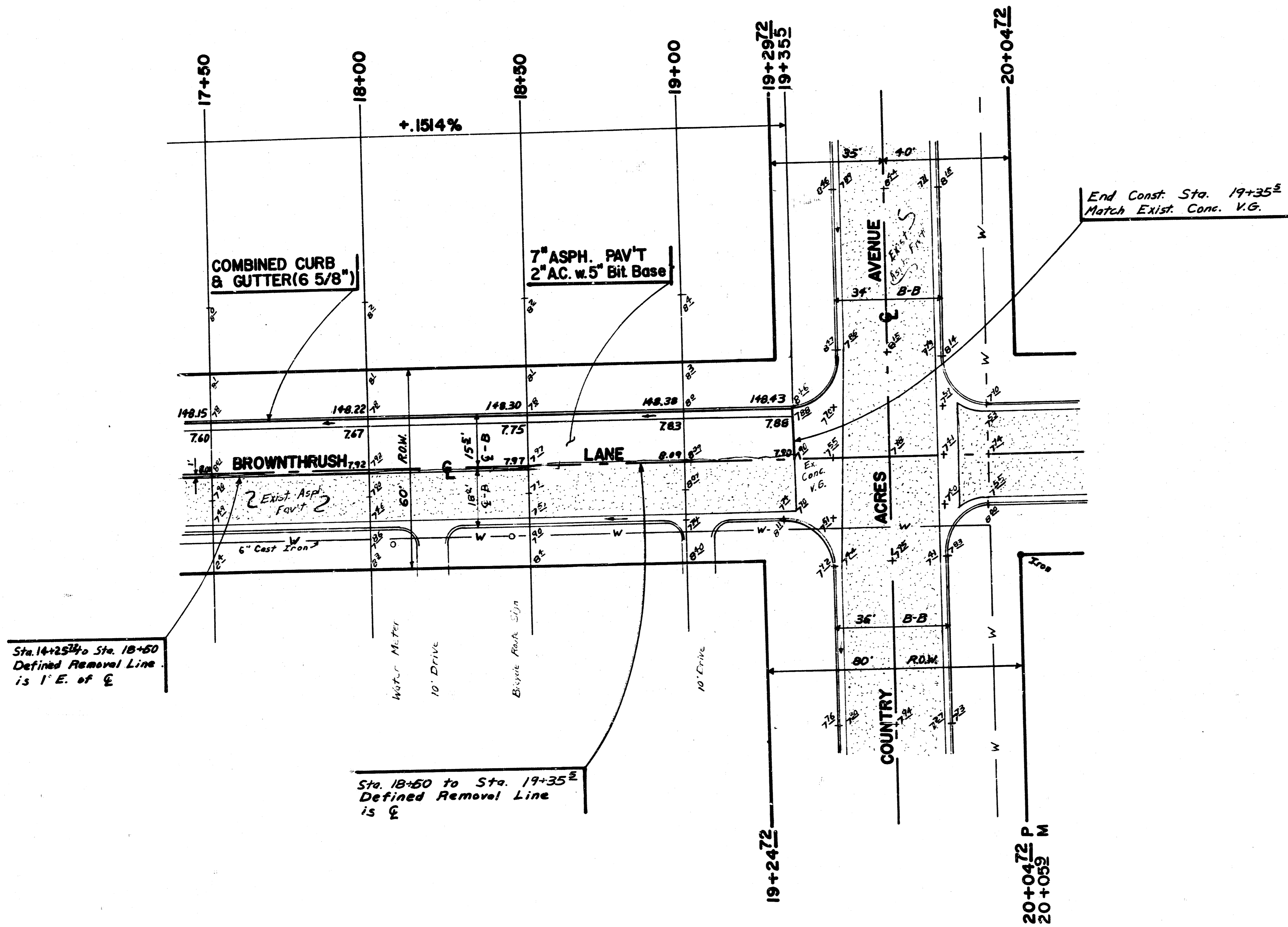
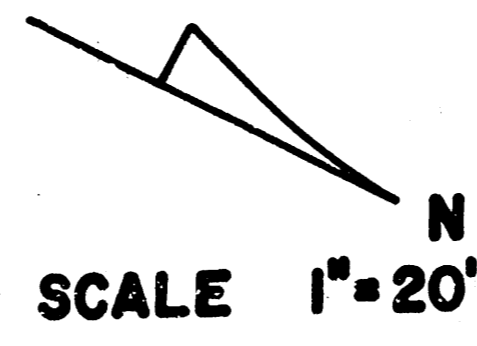
For Details & Further Information on
the Reconstruction of the Intersection
of Frazier & Brownthrush, See Sheet 7.



WEST HALF BROWNTHRUSH-N.L. SECOND TO S.L. COUNTRY ACRES
PROJECT NO. 472-76-245-81370-000-000-001
CITY OF WICHITA M. E. LINDEBAK CITY ENGINEER
LANDCO ENGINEERING CONSULTANT ENGINEER
BOOK DS2 DRAWN BY RH DATE 2/85

FILMED FROM THE BEST
AVAILABLE COPY.....

B.M. El. 147.92 "+ in TC, E-end return SE-corner Country Acres and Brownthrush



Sta. 14+25.72 to Sta. 18+50
Defined Removal Line
is 1' E. of C

Sta. 18+50 to Sta. 19+35.5
Defined Removal Line
is C

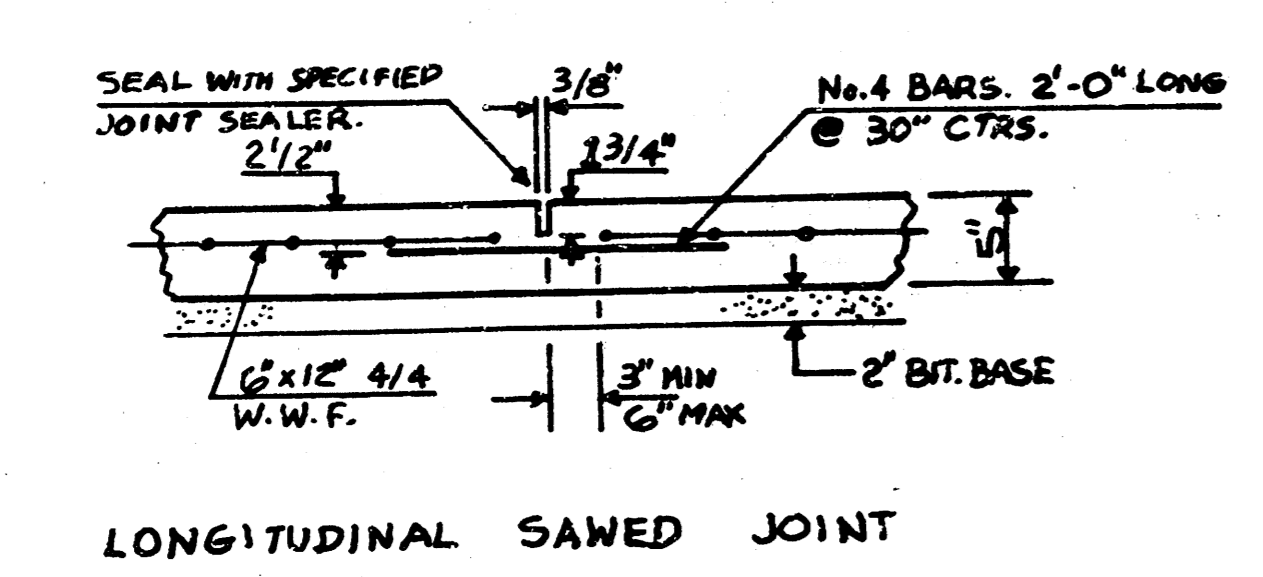
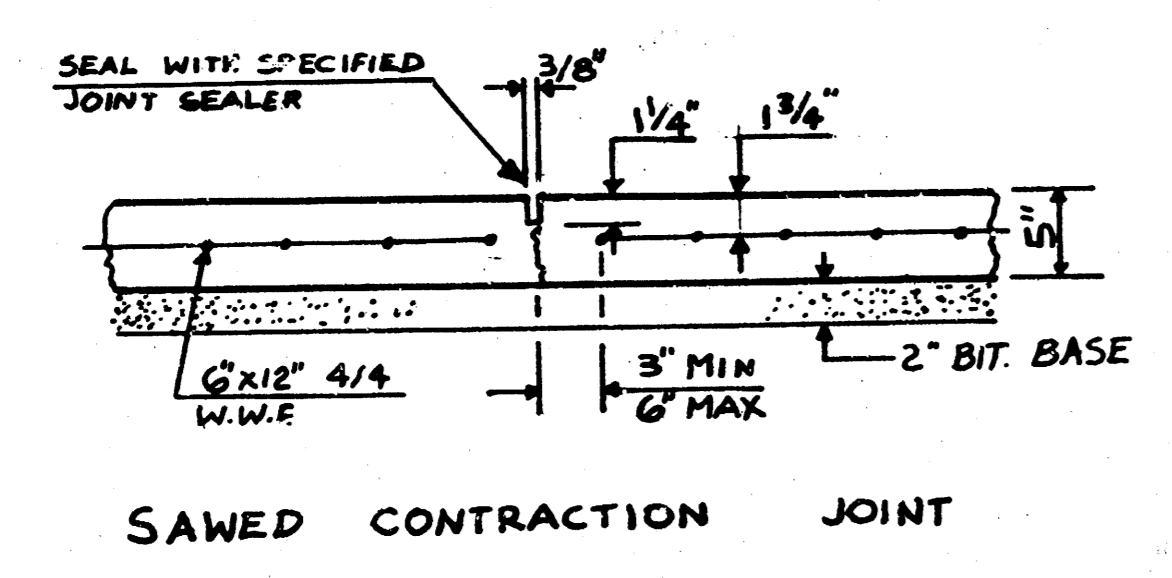
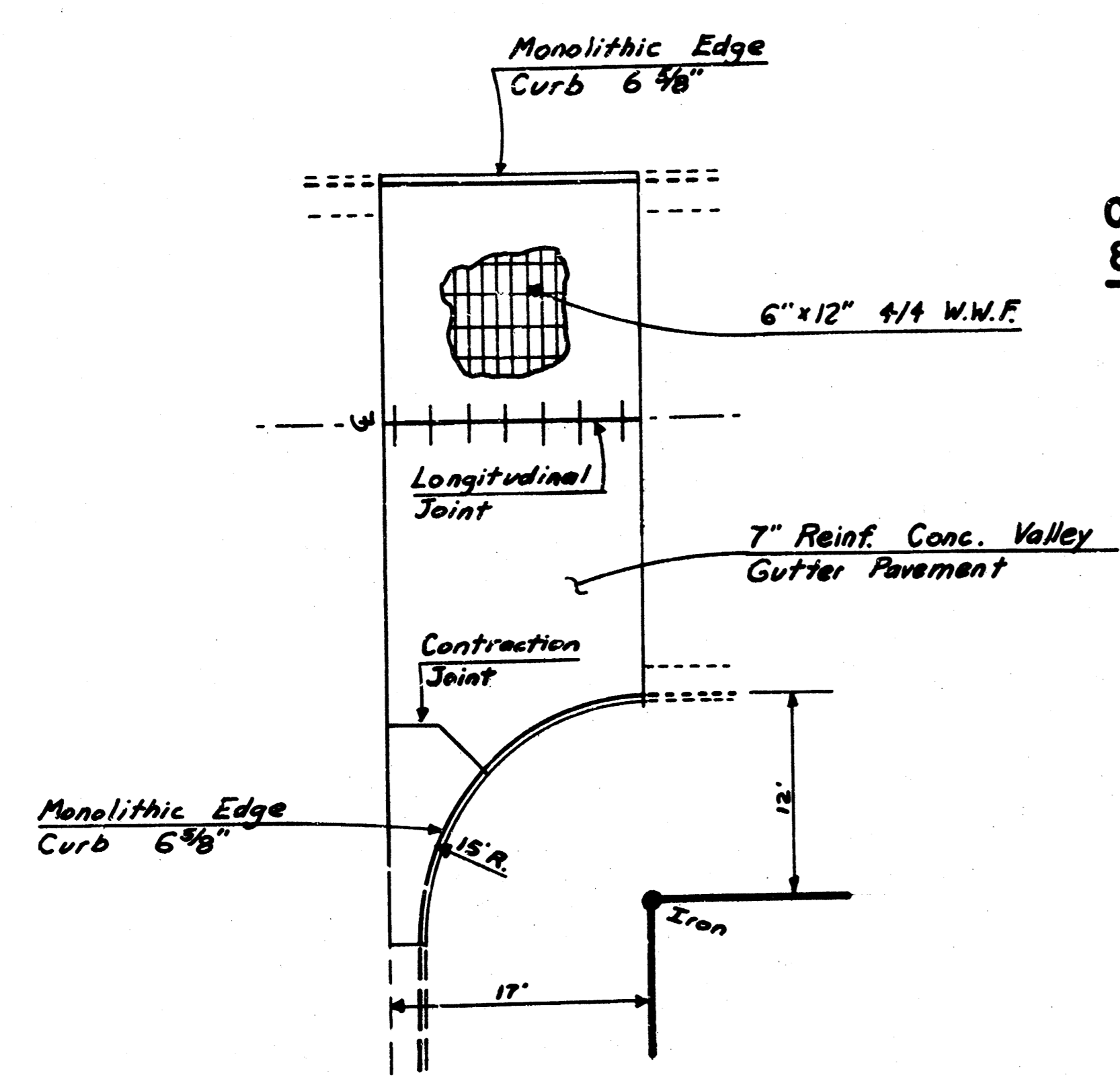
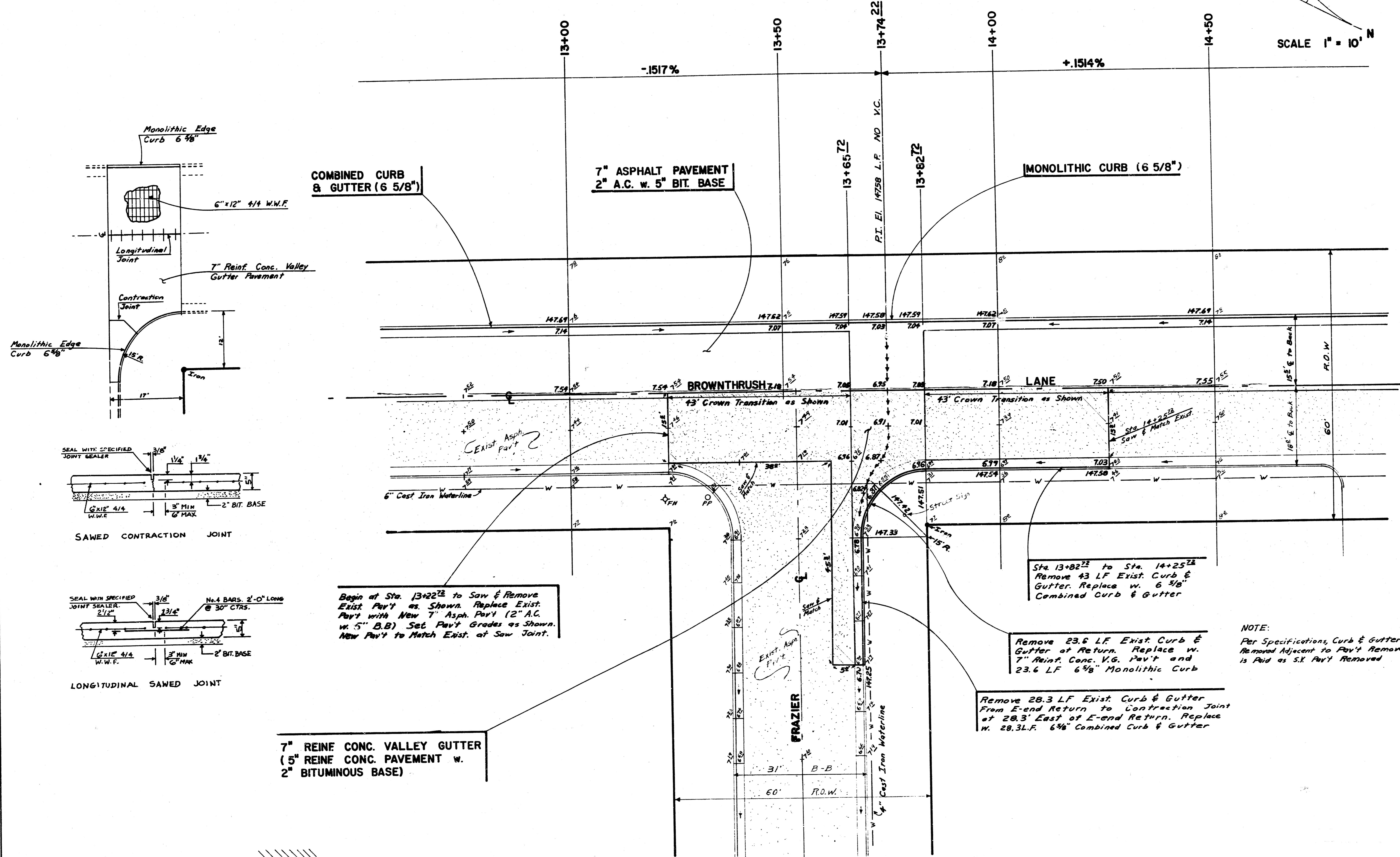


WEST HALF BROWTHRUSH - N.L. SECOND TO S.L. COUNTRY ACRES		
PROJECT NO. 472-76-245-81370-000-000-001		
CITY OF WICHITA	M. E. LINDEBAK	CITY ENGINEER
LANDCO ENGINEERING		CONSULTANT ENGINEER
BOOK DS2	DRAWN BY RH	DATE 2/85

FILMED FROM THE BEST AVAILABLE COPY

DETAIL OF RECONSTRUCTION OF INTERSECTION OF BROWTHRUSH & FRAZIER

SCALE 1" = 10' N



7" REINF. CONC. VALLEY GUTTER (5" REINF. CONC. PAVEMENT w. 2" BITUMINOUS BASE)

////// DENOTES REMOVAL

Sta. 13+82.72 to Sta. 14+25.72
Remove 43 LF Exist. Curb & Gutter. Replace w. 6 5/8" Combined Curb & Gutter

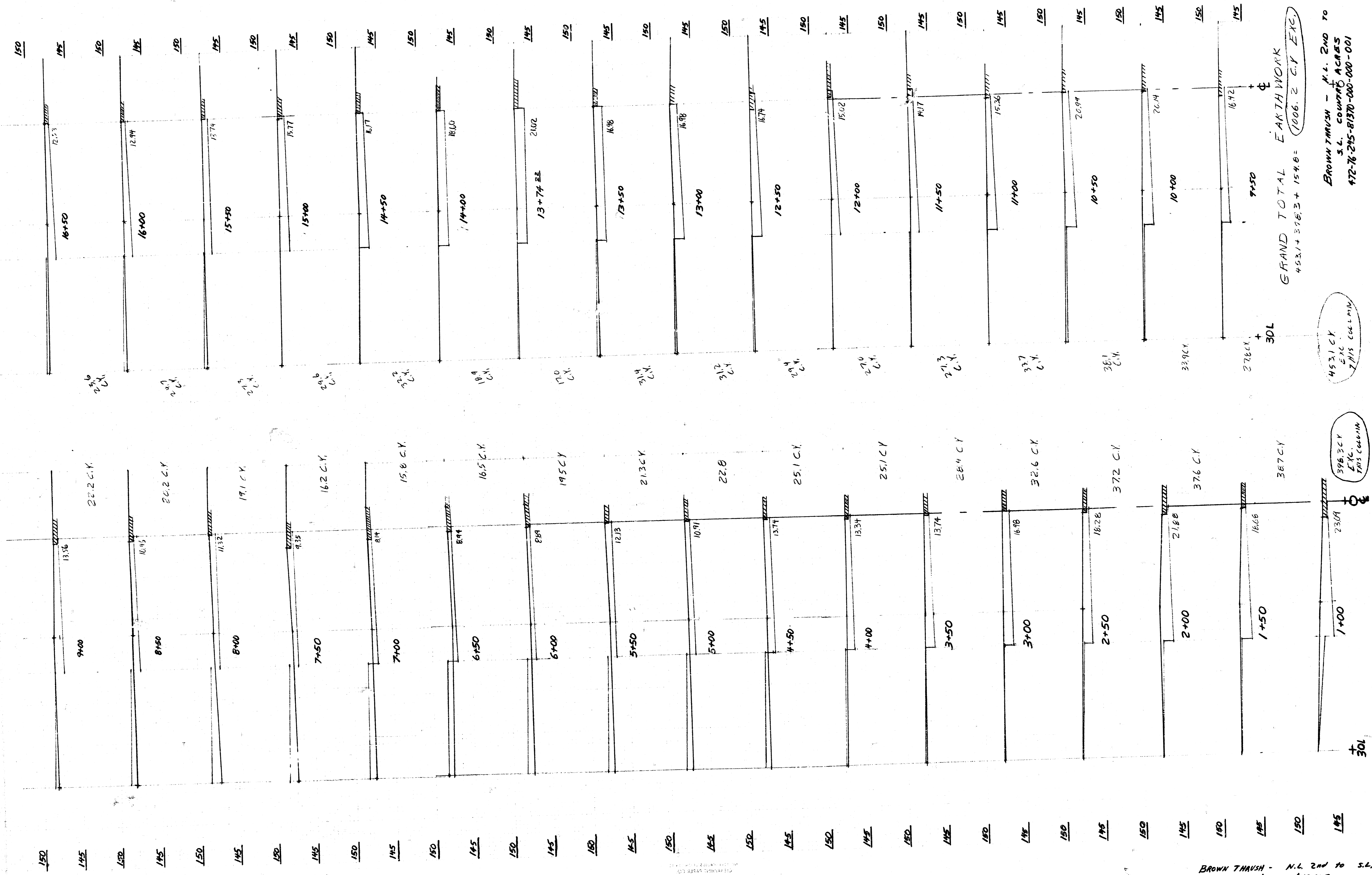
Remove 23.6 LF Exist. Curb & Gutter at Return. Replace w. 7" Reinf. Conc. V.G. Pav't and 23.6 LF 6 5/8" Monolithic Curb

Remove 28.3 LF Exist. Curb & Gutter From E-end Return to Contraction Joint at 28.3' East of E-end Return. Replace w. 28.3 LF 6 5/8" Combined Curb & Gutter

NOTE:
Per Specifications, Curb & Gutter Removed Adjacent to Pav't Removed is Paid as S.K. Pav't Removed



WEST HALF BROWTHRUSH - N.L. SECOND TO S.L. COUNTRY ACRES
 PROJECT NO. 472-76-245-81370-000-000-001
 CITY OF WICHITA M. E. LINDEBAK CITY ENGINEER
 LANDCO ENGINEERING CONSULTANT ENGINEER
 BOOK DS2 DRAWN BY RH DATE 2/85



GRAND TOTAL EARTHWORK
 453.1 + 396.3 + 154.6 = 1006.2 C.Y. EXC.

8/9

BROWN THAUSH - N.L. 2ND TO S.L. COUNTRY ACRES
 472-76-245-81370-000-001

453.1 C.Y. EXC. THIS COLUMN

396.3 C.Y. EXC. THIS COLUMN

BROWN THAUSH - N.L. 2ND TO S.L. COUNTRY ACRES
 472-76-245-81370-000-001

FILMED FROM THE BEST AVAILABLE COPY

