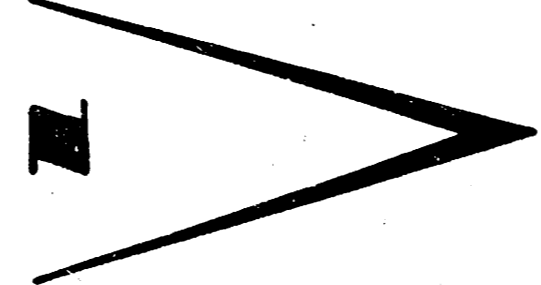


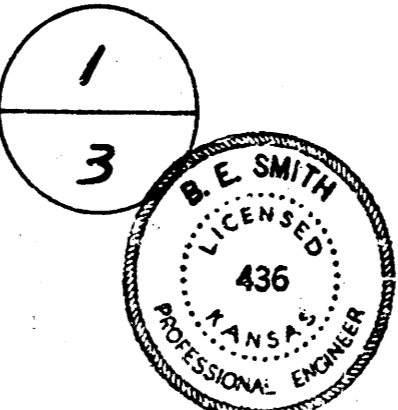
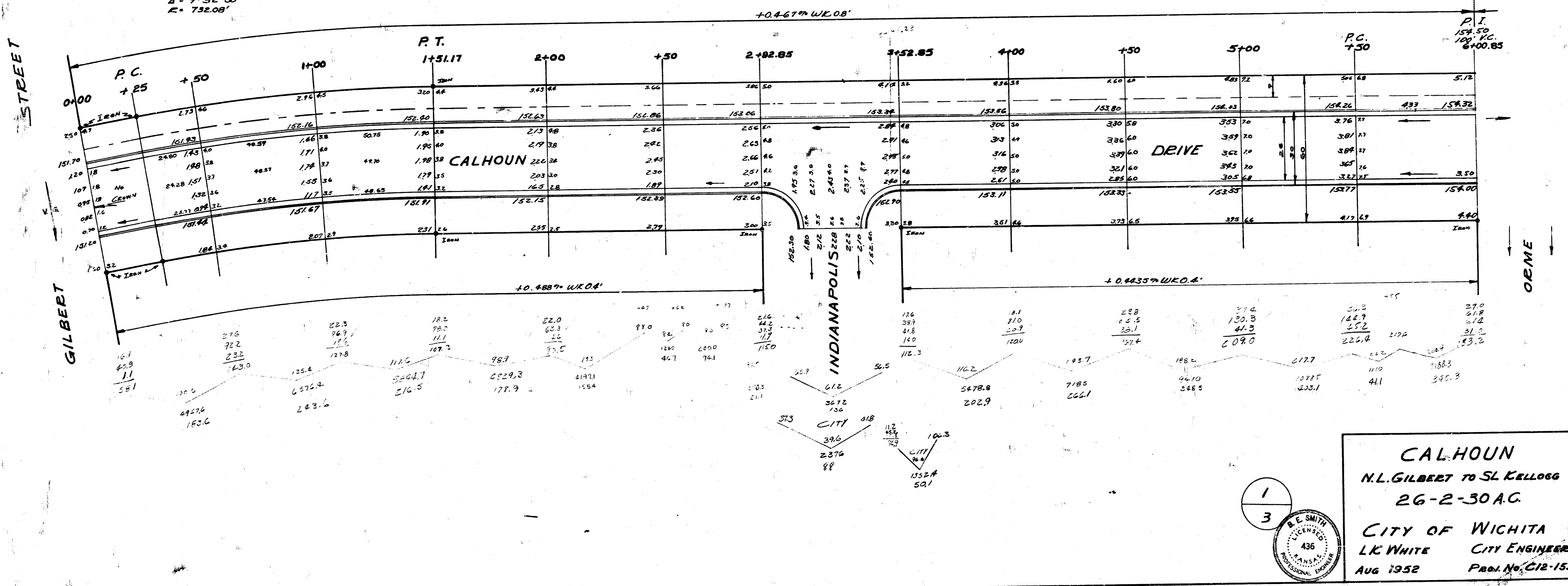
B.M. 15371 M. IN MUELLER F. PIA. NW COR. CALHOUN & GILBERT - Moved Do not use.  
B.M. 15320 R/L SPIKE WEST SIDE BELL TEL. PO. 100' N. NE. ENTRANCE 674 E5 WHITEHIDE

STATIONING ON A LINE 9'E OF W.E.



Area	City
1281.0	175.2
2227.9	158.7
4073.7	233.3
410.92	+10%
4508.8	366.6

CURVE DATA ON BASE LINE  
Δ = 9° 52' 30"  
R = 732.08'



**CALHOUN**  
N.L. GILBERT TO SL. KELLOGG  
26-2-30 A.C.  
CITY OF WICHITA  
L.K. WHITE CITY ENGINEER  
AUG 1952 Proj. No. C12-155

NOTE STR. 9+13.35  
LEAVE CURB OPENINGS  
FOR FUTURE CATCH BASINS.  
CITY TO INSTALL 36"  
18" ECP PIPE TO PAVING

