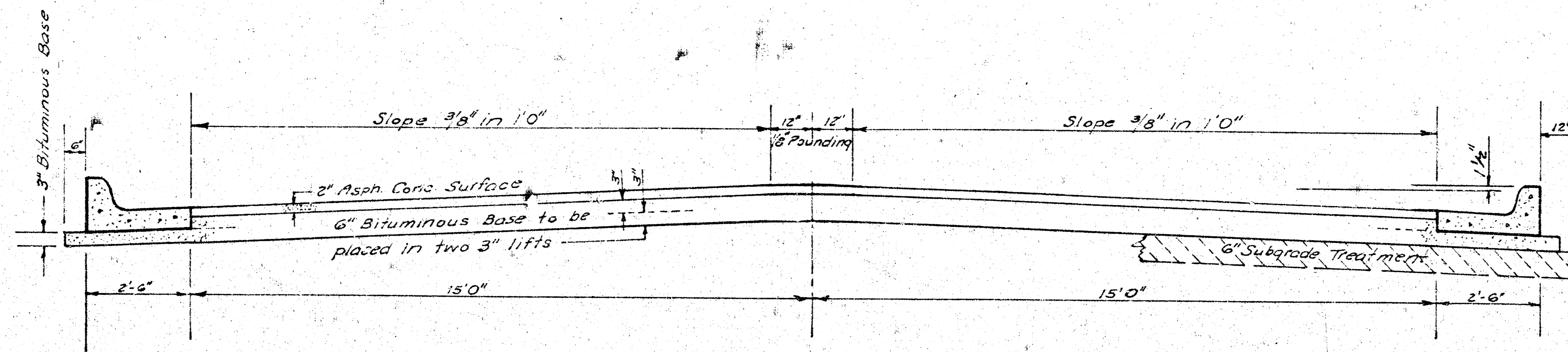


CALLAHAN DRIVE
 N.L. THURMAN STREET TO S.L. 17TH STREET



TYPICAL SECTION

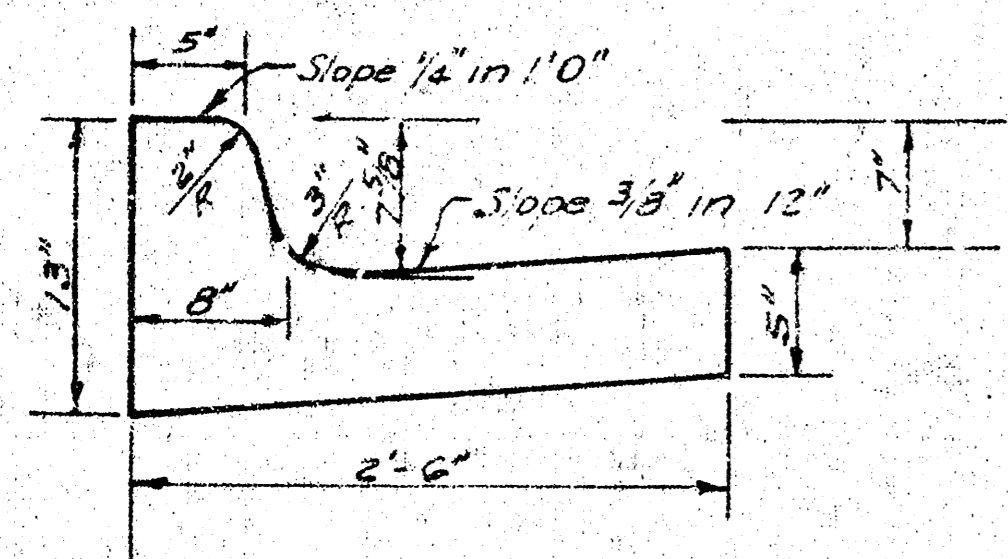
35' ASPHALTIC CONCRETE PAVEMENT WITH BITUMINOUS BASE

A TACK COAT OF EMULSIFIED ASPHALT (SS-1H) SHALL BE APPLIED AT AN APPROXIMATE RATE 0.05 GALLONS PER SQ YD BETWEEN LIFTS OF ASPHALTIC MATERIALS WHEN ORDERED BY THE ENGINEER. TACK COAT WILL NOT BE PAID FOR DIRECTLY AND SHALL BE CONSIDERED AS SUBSIDIARY TO PRICE BID FOR ASPHALTIC PAVEMENT.

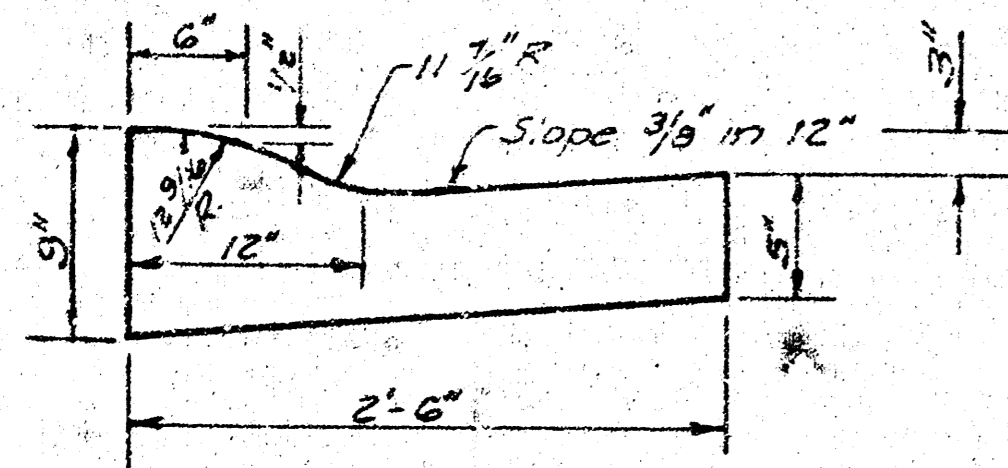
BITUMINOUS BASE AND ASPHALTIC CONCRETE WEARING SURFACE SHALL BE PLACED WITH A LAYDOWN MACHINE HAVING AUTOMATIC ELECTRONIC CONTROLS FOR CROWN AND GRADE. CONSTRUCTION JOINTS IN EACH LIFT SHALL BE STAGGERED A MINIMUM DISTANCE OF 1' WITH JOINTS IN PRECEDING LIFTS AND PLACED SUCH THAT A JOINT WILL BE CONSTRUCTED ON THE CENTERLINE IN THE TOP LIFT.

*The A.C. Pavement between the comb curb & gutter shall be paid as Sq.Yds. 8" A.C. Pavement (6" Bituminous Base).
 The Bituminous Base under the comb curb & gutter shall be paid as Sq.Yds. 3" Bituminous Base.*

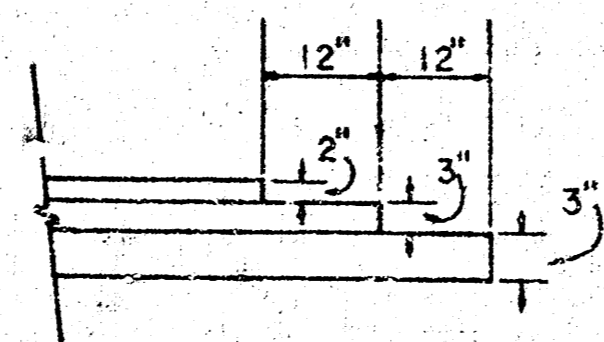
COMBINED CURB & GUTTER



ROLL TYPE CURB & GUTTER



DETAIL OF TRANSVERSE CONSTRUCTION JOINTS



TRANSVERSE CONSTRUCTION JOINTS SHALL BE CONSTRUCTED IN FLEXIBLE BASE PAVEMENTS AT LOCATIONS WHERE PAVEMENT TEMPORARILY ENDS TO FACILITATE FUTURE PAVEMENT CONSTRUCTION AS SHOWN BY DETAIL. THE COST OF CONSTRUCTING THE TRANSVERSE CONSTRUCTION JOINTS SHALL NOT BE MEASURED OR PAID FOR DIRECTLY BUT SHALL BE INCLUDED IN THE BID PRICE FOR SQUARE YARDS OF ASPHALTIC CONCRETE PAVEMENT.

CITY OF WICHITA KANSAS

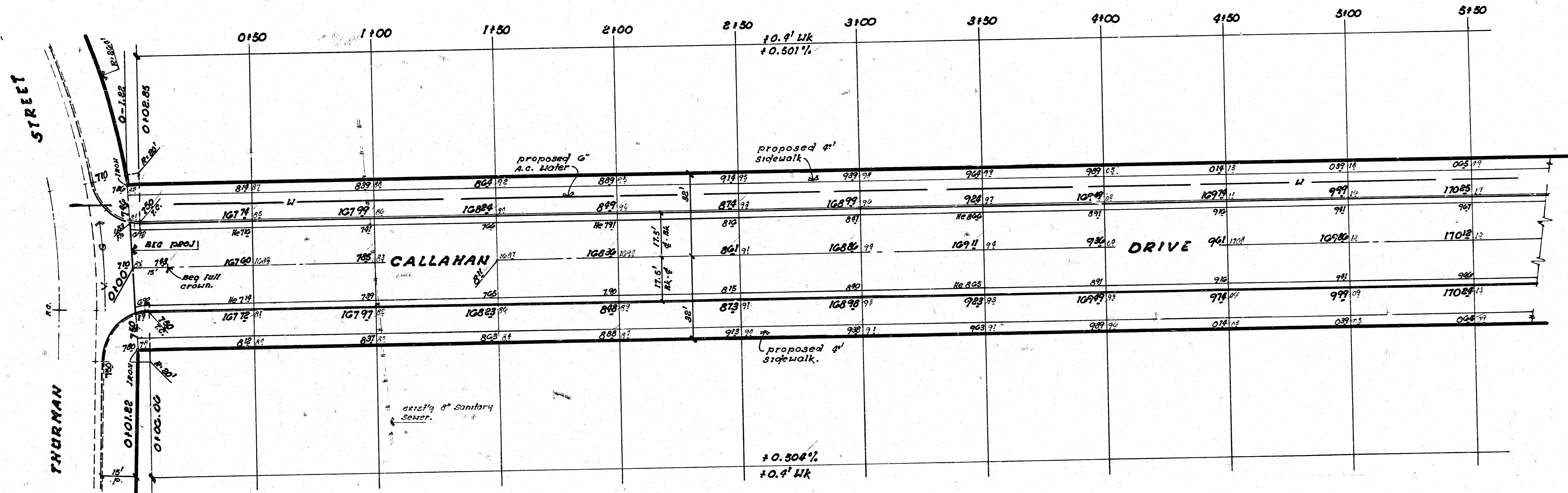
DEPARTMENT of PUBLIC WORKS - Engineering Division.

R. W. LINN CITY ENGINEER

DATE *October, 1946* Proj No. DAKS574055

1/3

B.M. 17241 city disc 31' S. + 30' East of 1/4 sec corner
TYLER RD and 17TH STREET.



MISSOURI
PLANS
D.C.D.'S
Plan
Sheet

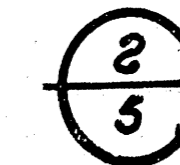
NOTE TO FIELD ENGINEER & CONTRACTOR
Grade parking and clear right-of-way for proposed sidewalk. Compact fill in sidewalk area. TO BE CONSTRUCTED BY "OTHERS".

SUB-GRADE
TYPE OF SUB-GRADE TREATMENT SHALL BE DETERMINED BY THE FIELD ENGINEER. SUB-GRADE TREATMENT MAY CONSIST OF LIME TREATMENT, CEMENT TREATMENT, SUB-GRADE MODIFICATION, OR ANY COMBINATION OF THESE.

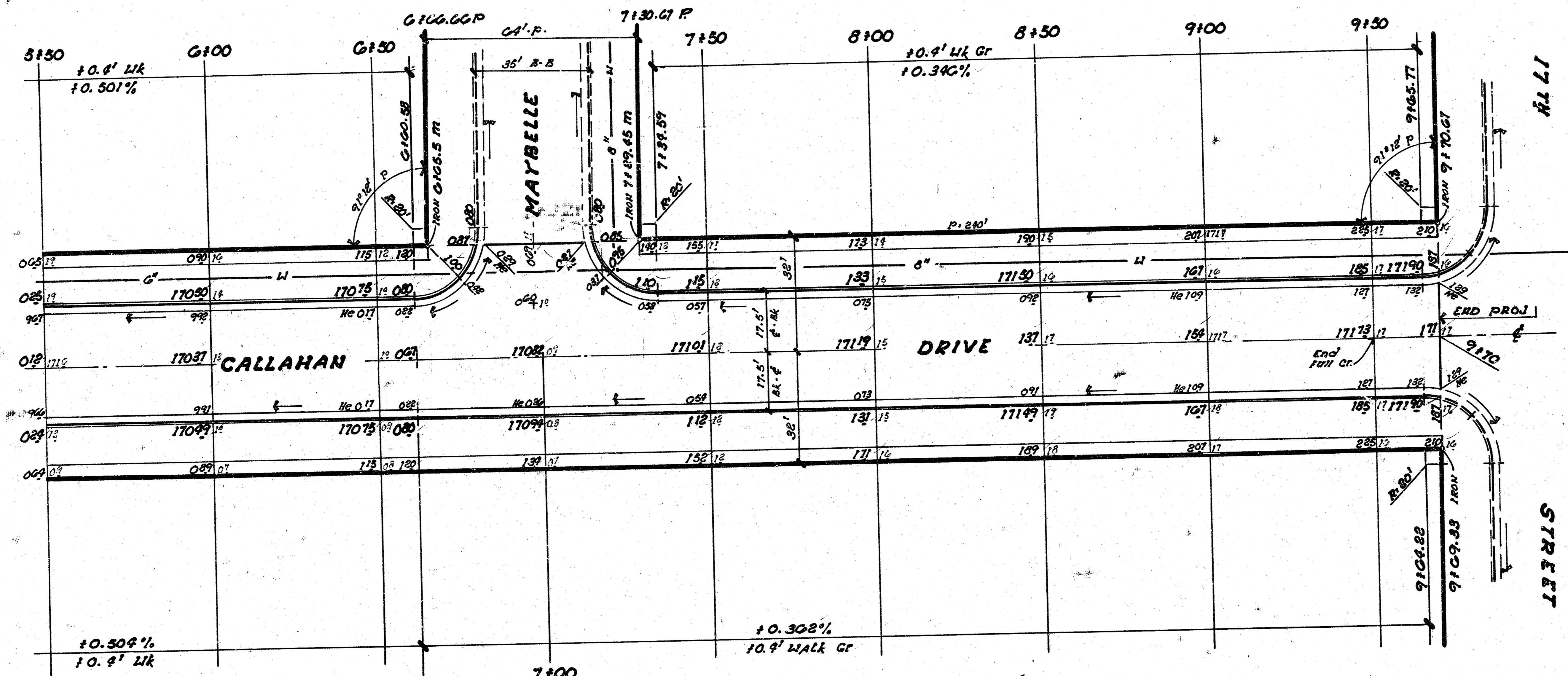
PROPERTY
EXCAVATION 2277.7 cu yds
110% 2507.5
2527.5 cu yds
3,856.25 sq yds Manipulation

COMP FILL
19.4 cu yds
110% 1.9
15.8 cu yds

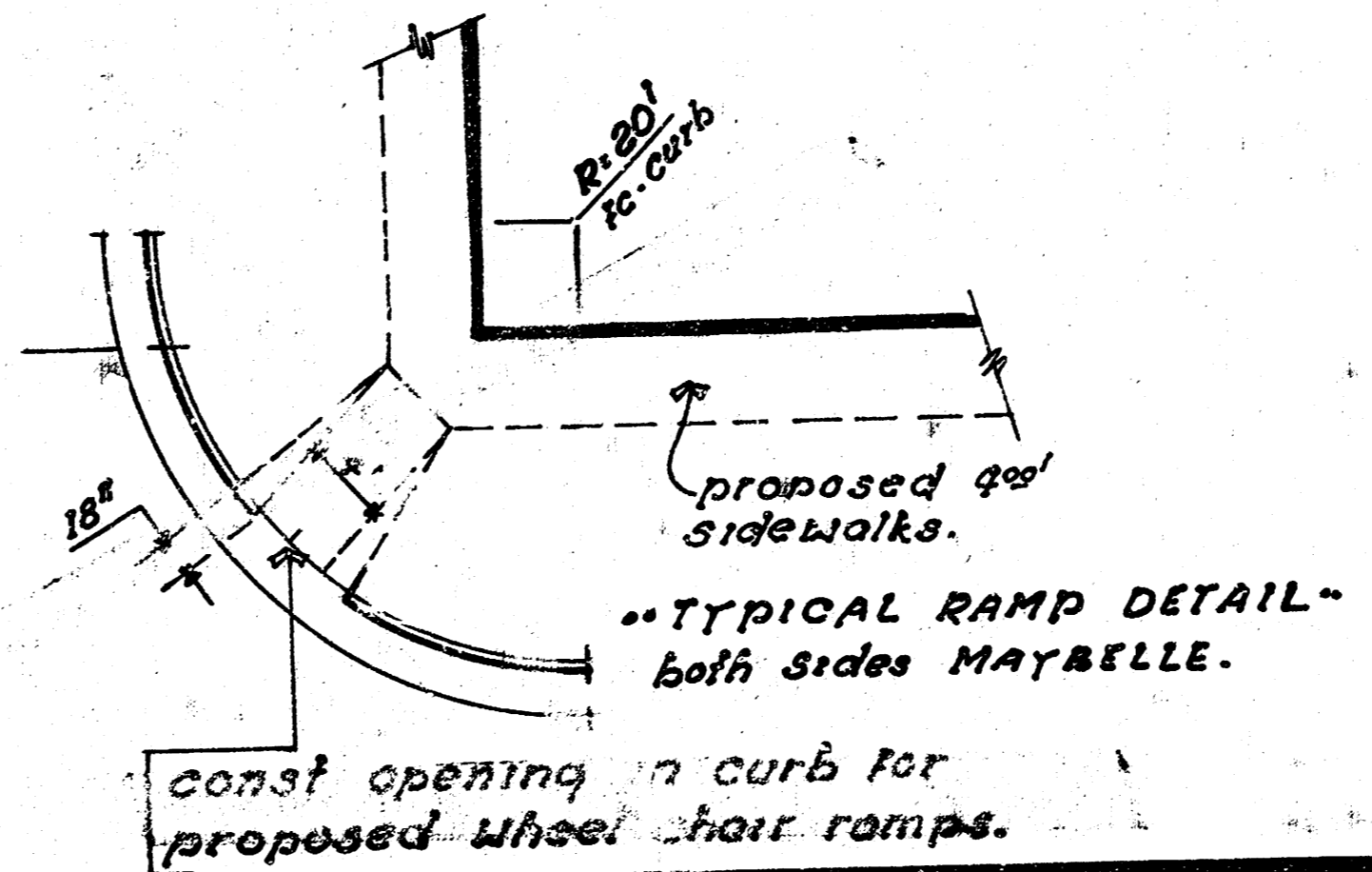
CITY
EXCAVATION 77.5 cu yds
110% 7.8
85.3 cu yds
203.4 sq yds Manipulation



CALLAHAN DRIVE
N.L. THURMAN STREET TO S.L.
17TH STREET.
CITY OF WICHITA, KANSAS
(35' B-B) 6" Bituminous Base - 2"
Asphaltic Conc Surface.
R. L. LINN CITY ENGINEER
DATE: Oct 1976 PROJ. NO. DAKS574053



G+00.55
R.I.
1161 17080
No. V.C.



PROJ No. DAKS 574035