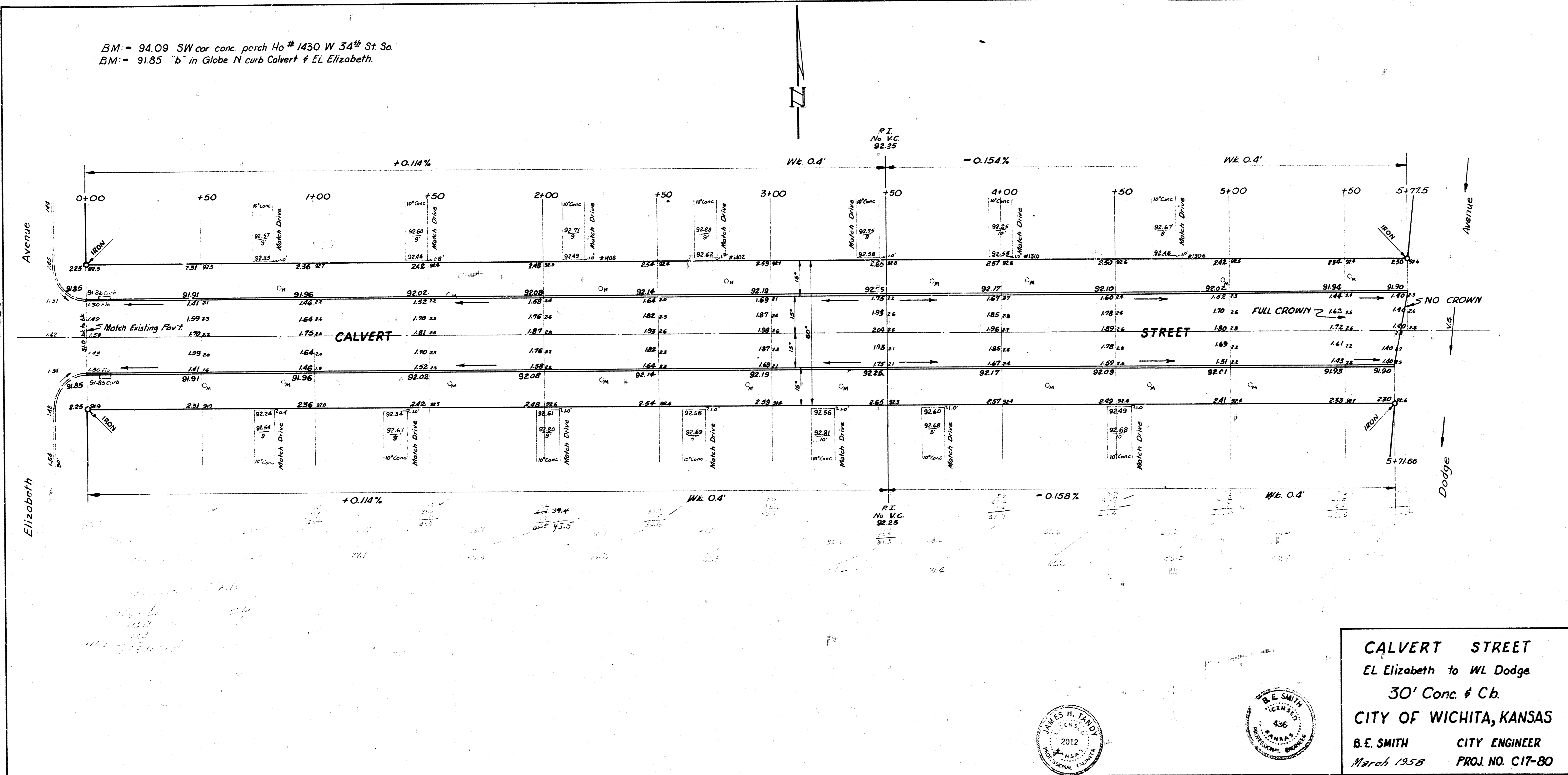


BM = 94.09 SW cor conc. porch Ho # 1430 W 34th St. So.
 BM = 91.85 'b' in Globe N curb Calvert # EL Elizabeth.



CALVERT STREET
 EL Elizabeth to WL Dodge
 30' Conc. & C.b.
 CITY OF WICHITA, KANSAS
 B.E. SMITH CITY ENGINEER
 March 1958 PROJ. NO. C17-80

