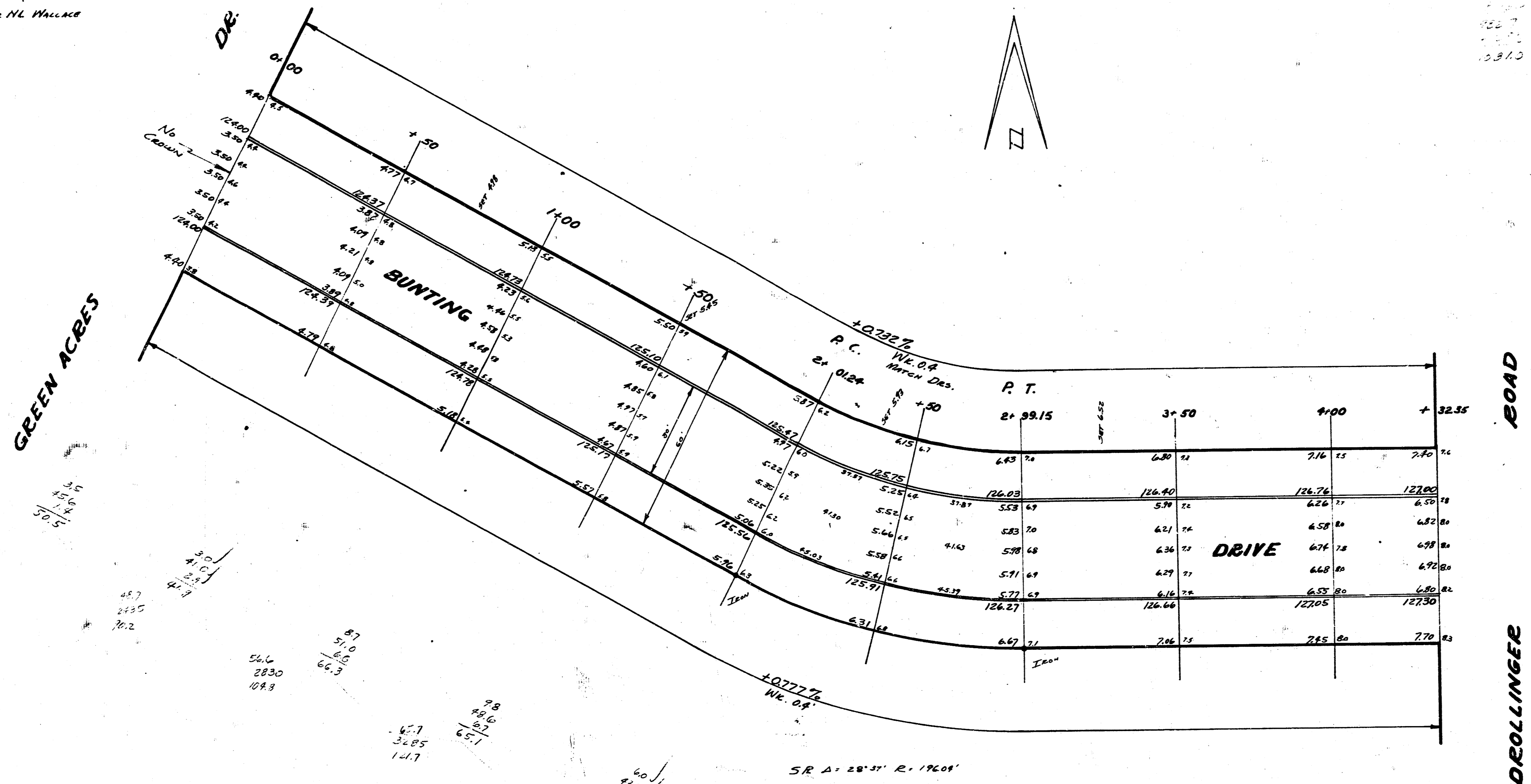


C.H.M. - 75

BM 12523 N 21/4 M E GREEN ACRES NEAR N.L. WALLACE

STATIONING ON S.R.



BUNTING
 EL GREEN ACRES TO W.L. DROLLINGER
 30' CONC. CURB
 CITY OF WICHITA KANSAS
 L.K. WHITE CITY ENGINEER
 JULY 1932 Prod. No. C12-43



84	101	91	90	70
49.1	49.8	54.5	58.0	53.0
8.3	2.8	8.3	10.5	10.5
69.8	67.3	71.9	77.5	70.5
60.0				
247.8				
71.8				
	66.1	65.6	74.7	74.0
	2151.7	3539.2	573.5	2233.9
	101.9	131.1	138.3	88.7