

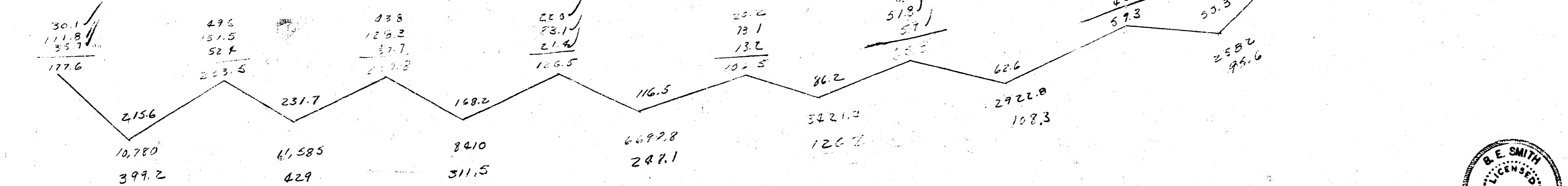
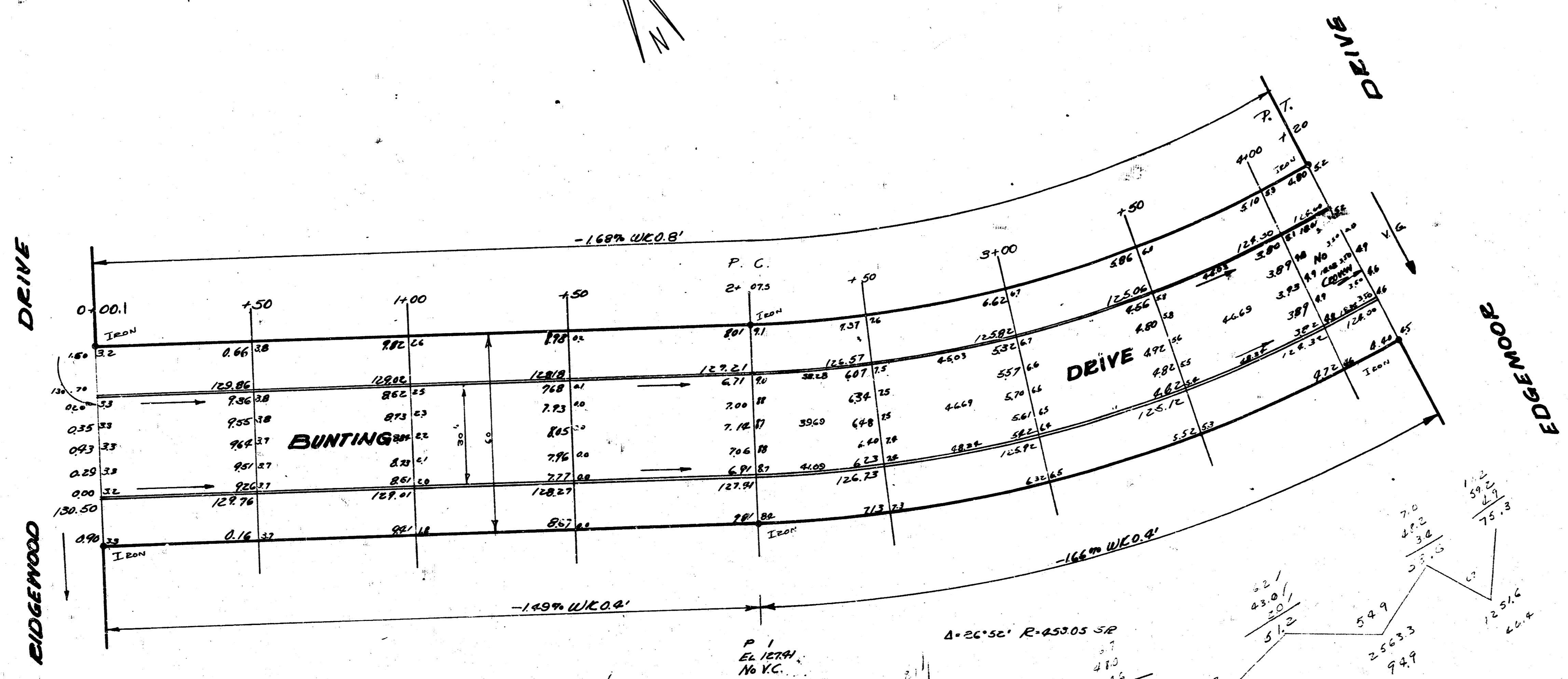
CHM 76

B.M. 12535 E.E. SPIES 1158' W. EDGEMOOR SL GRANGE

STATIONING ON SL



PROPERTY
1159.7
3122.7



BUNTING
 E.L. RIDGEMOOD TO W. EDGEMOOD
 30' CONC. CURB
 CITY OF WICHITA KANSAS
 L.K. WHITE CITY ENGINEER
 JULY 1952 PROJ. NO. C12-23