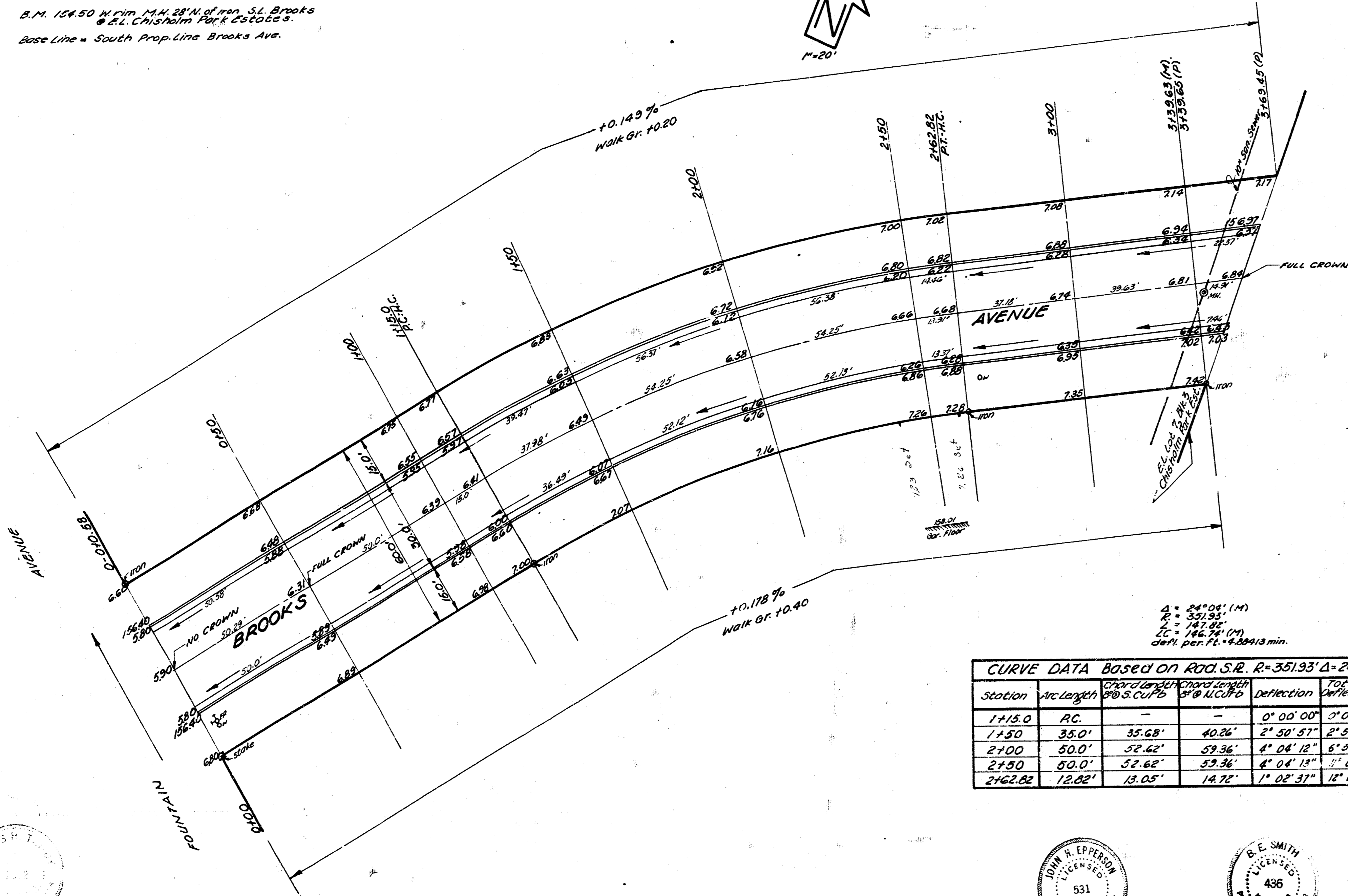


B.M. 154.50 W.C.M. 144.28 W.C.M. 141.70 S.L. Brooks
 & E.L. Christolm Park Est.
 Base Line = South Prop. Line Brooks Ave.

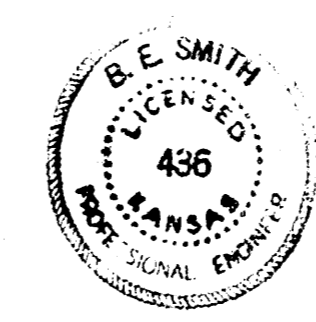


$\Delta = 54^{\circ}04'14''$
 $R = 351.93'$
 $L = 147.91'$
 $LC = 146.74'$
 $DEP. PER FT. = 4.88413 \text{ min.}$

Station	Arc Length	Chord Length	Chord Bearing	Deflection	Total Deflection
1+15.0	RC.	—	—	0° 00' 00"	1° 00' 00"
1+50	35.0'	35.68'	40.26'	2° 30' 37"	2° 30' 37"
2+00	50.0'	52.62'	57.36'	4° 04' 12"	6° 35' 09"
2+50	50.0'	52.62'	57.36'	4° 04' 12"	10° 43' 21"
2+42.82	12.62'	13.05'	14.72'	1° 02' 31"	12° 01' 58"

FILL TOTAL
 PROP
 1232.8
 123.3 10%
 1356.1 CU. YDS.

BROOKS AVENUE
 E.L. Fountain Ave. - E.L. Lot 7, Blk. 3 Christolm Park Est.
 26'-2'-30" ASPHALTIC CONC.
 CITY OF WICHITA, KANSAS
 D.E. Smith
 Date: 2-3-1925
 City Engineer
 Proj. No. C75-193



Survey G. Young Bk. 1874
 Plan 3
 Scale
 1" = 40'