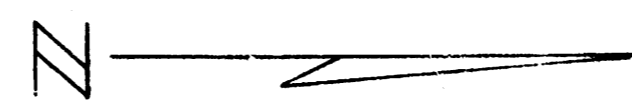
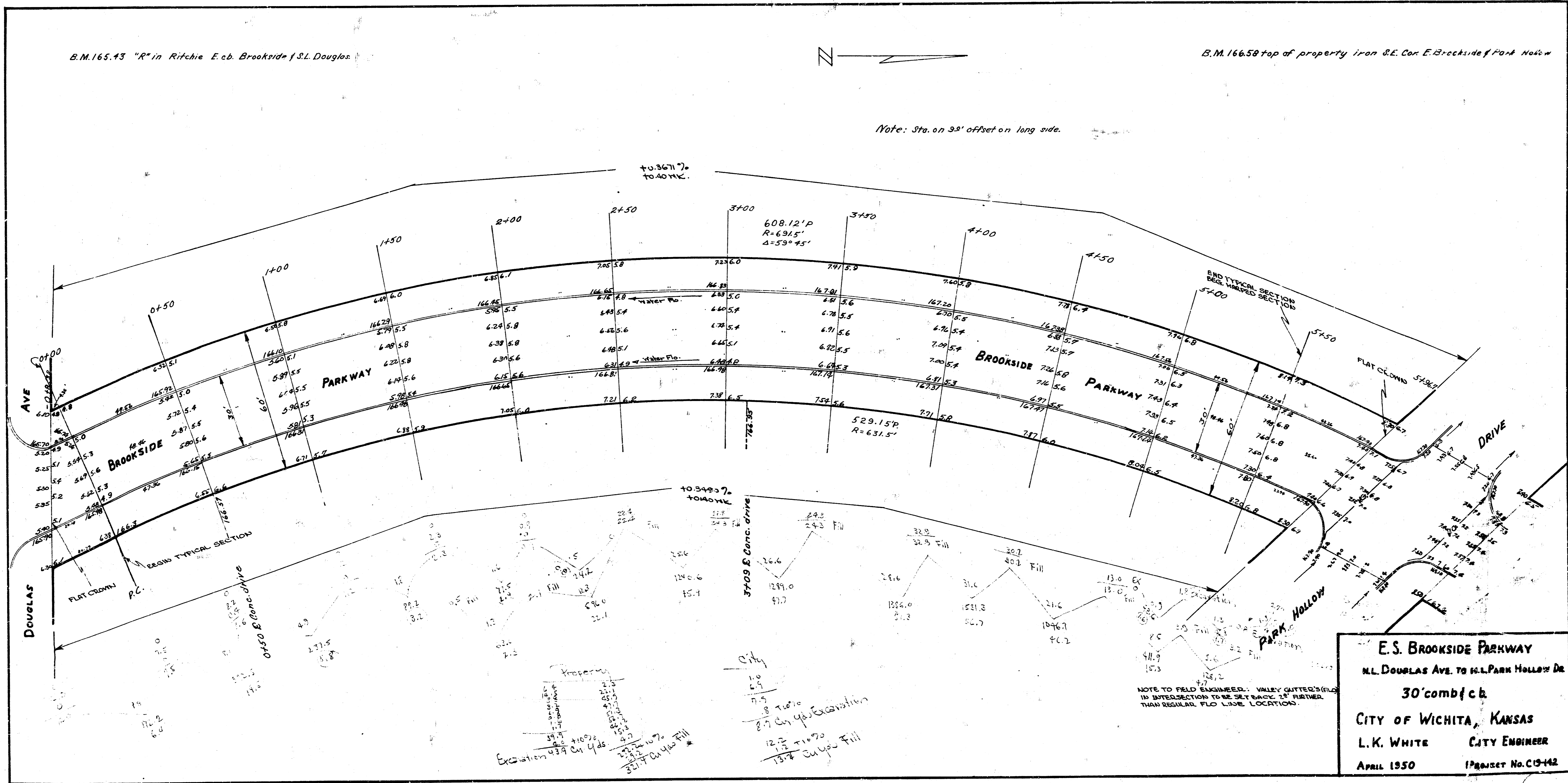


B.M. 165.43 "R" in Ritchie E. of Brookside f.S.L. Douglas

B.M. 166.59 top of property iron S.E. Cor. E. Brookside f Park Hollow



Note: Sta. on 30' offset on long side.



E.S. BROOKSIDE PARKWAY
 N.L. DOUGLAS AVE. TO N.L. PARK HOLLOW DR.
 30' comb/cb
 CITY OF WICHITA, KANSAS
 L.K. WHITE CITY ENGINEER
 APRIL 1950 (Project No. C15-142)

NOTE TO FIELD ENGINEER: VALLEY CUTTER'S GROUND IN INTERSECTION TO BE SET BACK 15' FURTHER THAN REGULAR F.L.O. LINE LOCATION.

Excavation 439 cu yds
 12.2 cu yds
 13.7 cu yds Fill

City
 7.9 cu yds
 8.9 cu yds Excavation
 12.2 cu yds
 13.7 cu yds Fill