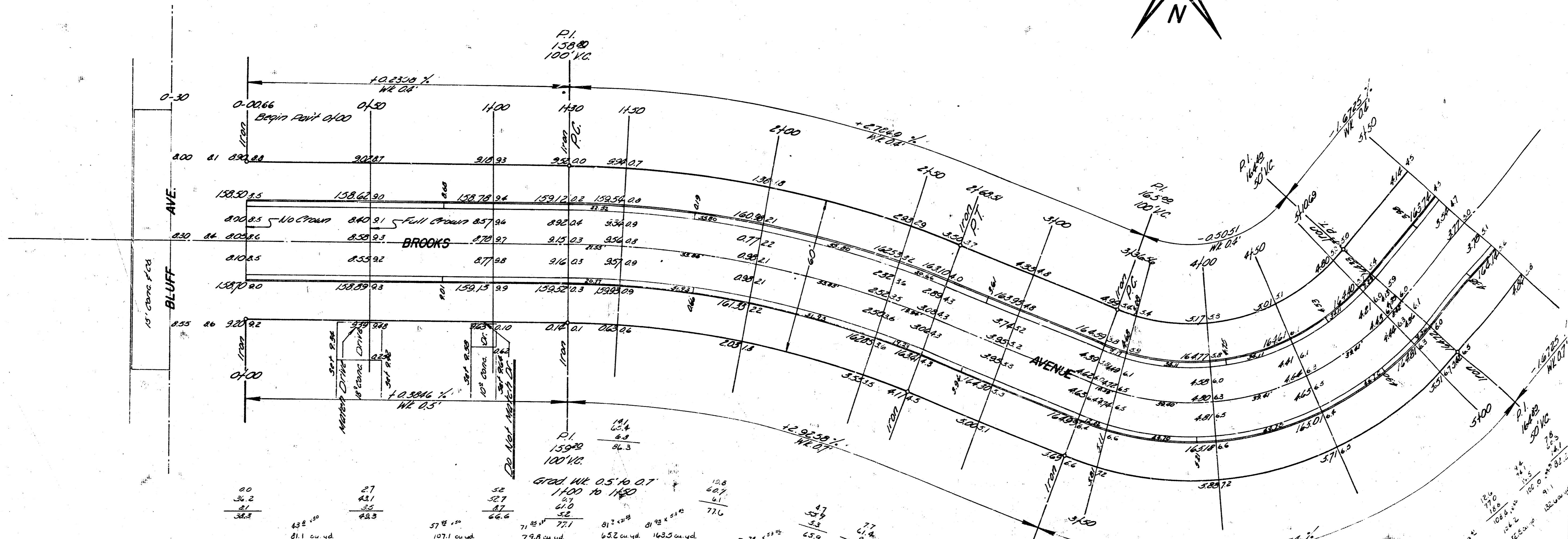


B.M. 16275 Top NE 1/4 Vert. pipe of gas meter @ Brooks School, Bluff & Charron Lane.
Baseline & Stationing on South Property Line.



Curve Data
Sta. 3136.36 to Sta. 5140.69
 $\Delta = 70^\circ 28'$
R = 141.30
del/TA = 12.1004

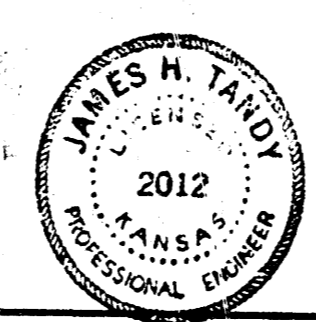
Station	Arc	Chord	Chord Elevation	Deflection	Total Defl.
3136.36	13.44	13.44	8.41	12.78	2° 43' 10"
3150	25.00	24.97	15.62	23.74	5° 05' 31"
3175	"	"	"	"	7° 46' 41"
3200	"	"	"	"	10° 30' 11"
3225	"	"	"	"	13° 08' 42"
3250	"	"	"	"	15° 42' 12"
3275	"	"	"	"	18° 10' 43"
3300	25.00	24.97	15.62	23.74	5° 05' 31"
3325	10.69	10.69	6.69	10.16	2° 29' 47"

Curve Data
Sta. 1130 to Sta. 2145.51
 $\Delta = 20^\circ 27'$
R = 300.07
del/TA = 4.42931

Station	Arc	Chord	Chord Elevation	Deflection	Total Defl.
1130					
1150	20.00	20.00	22.73	20.36	1° 28' 35"
1175	25.00	24.99	28.40	25.44	3° 19' 19"
1200	"	"	"	"	5° 10' 05"
1225	"	"	"	"	7° 00' 47"
1250	25.00	24.99	28.40	25.44	1° 30' 44"
1275	18.51	18.51	21.04	18.84	1° 21' 39"

Excavation

Prop. Cuts	Excavation
288.9	293.5
288.6	284.0
2514.5	243.5



SHEET ONE

BROOKS AVE
E.L. BLUFF - E.L. CHARRON LN.
26'-2'-30' A.C.
CITY OF WICHITA, KANSAS
B. E. SMITH CITY ENGINEER
DATE: APRIL 2002, PROJ. NO. C19-191