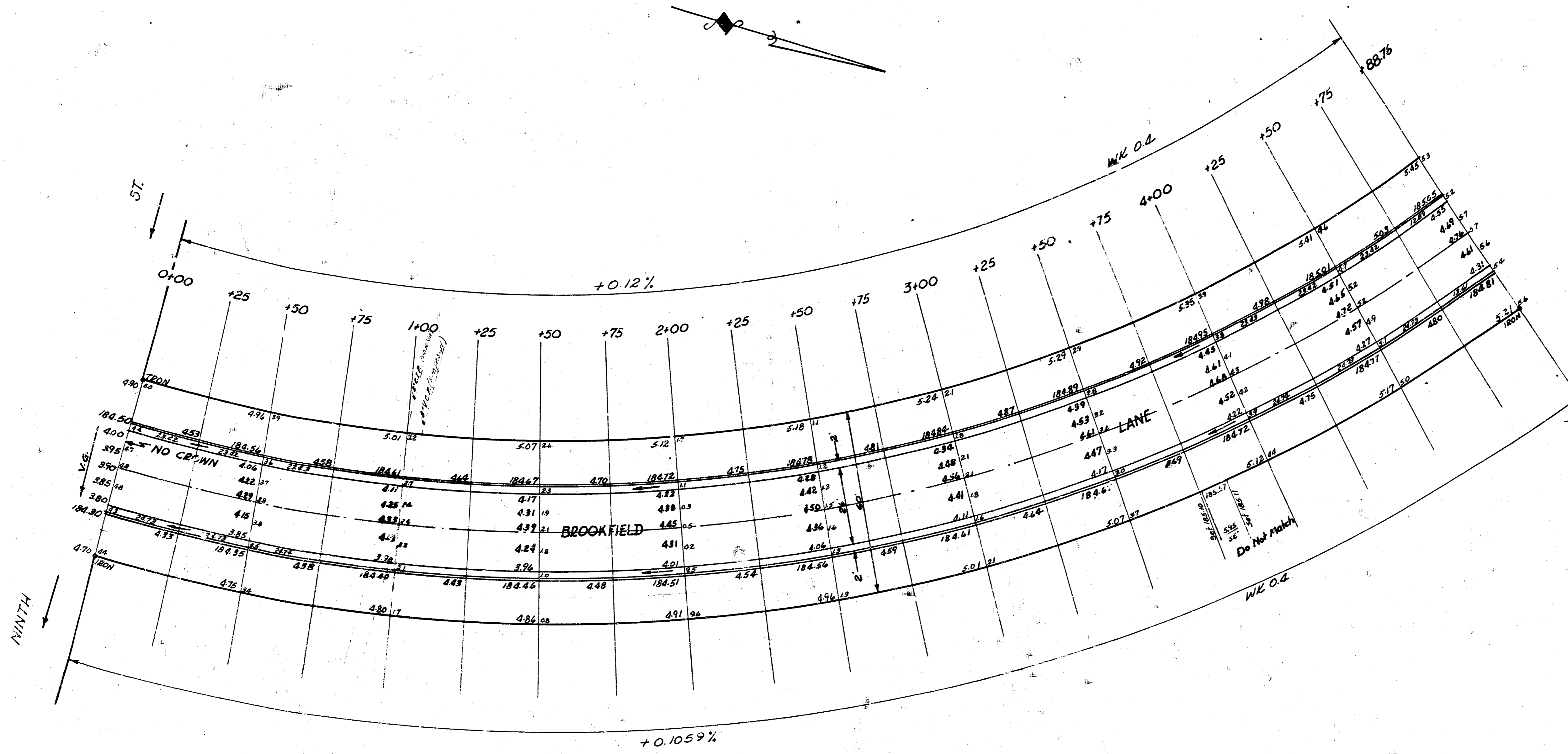


BM = 177.98 Standard SW cor 9th & Armour Lane.
 Station on 9° offset W of E.R.

CURVE DATA: 9° offset W of E.R.
 R = 572.03 Δ = 48° 57' 18" Defl = 3004867'

STATION	Deflection Angle	Total Deflection	Chord Length 6" offset E cb.	Chord Length 6" offset W cb.
0+00				
+25	1° 15' 07"	1° 15' 07"	24.99	23.16
+50	2° 30' 14"	2° 30' 14"		
+75	3° 45' 21"	3° 45' 21"		
+100	5° 00' 28"	5° 00' 28"		
+125	6° 15' 35"	6° 15' 35"		
+150	7° 30' 42"	7° 30' 42"		
+175	8° 45' 49"	8° 45' 49"		
+200	10° 00' 56"	10° 00' 56"		
+225	11° 16' 03"	11° 16' 03"		
+250	12° 31' 10"	12° 31' 10"		
+275	13° 46' 17"	13° 46' 17"		
+300	15° 01' 24"	15° 01' 24"		
+325	16° 16' 31"	16° 16' 31"		
+350	17° 31' 38"	17° 31' 38"		
+375	18° 46' 45"	18° 46' 45"		
+400	20° 01' 52"	20° 01' 52"		
+425	21° 16' 59"	21° 16' 59"		
+450	22° 32' 06"	22° 32' 06"		
+475	23° 47' 13"	23° 47' 13"	24.99	23.16
188.76	0° 41' 21"	24° 28' 34"	13.72	12.73



BROOKFIELD LANE
 NL 9th to NL Lot i Bk 5 Pine Valley Est 1st Add
 26-2-30 AC
 CITY OF WICHITA, KANSAS
 B.E. SMITH CITY ENGINEER
 MAY 1954 PROJ NO C16-35

