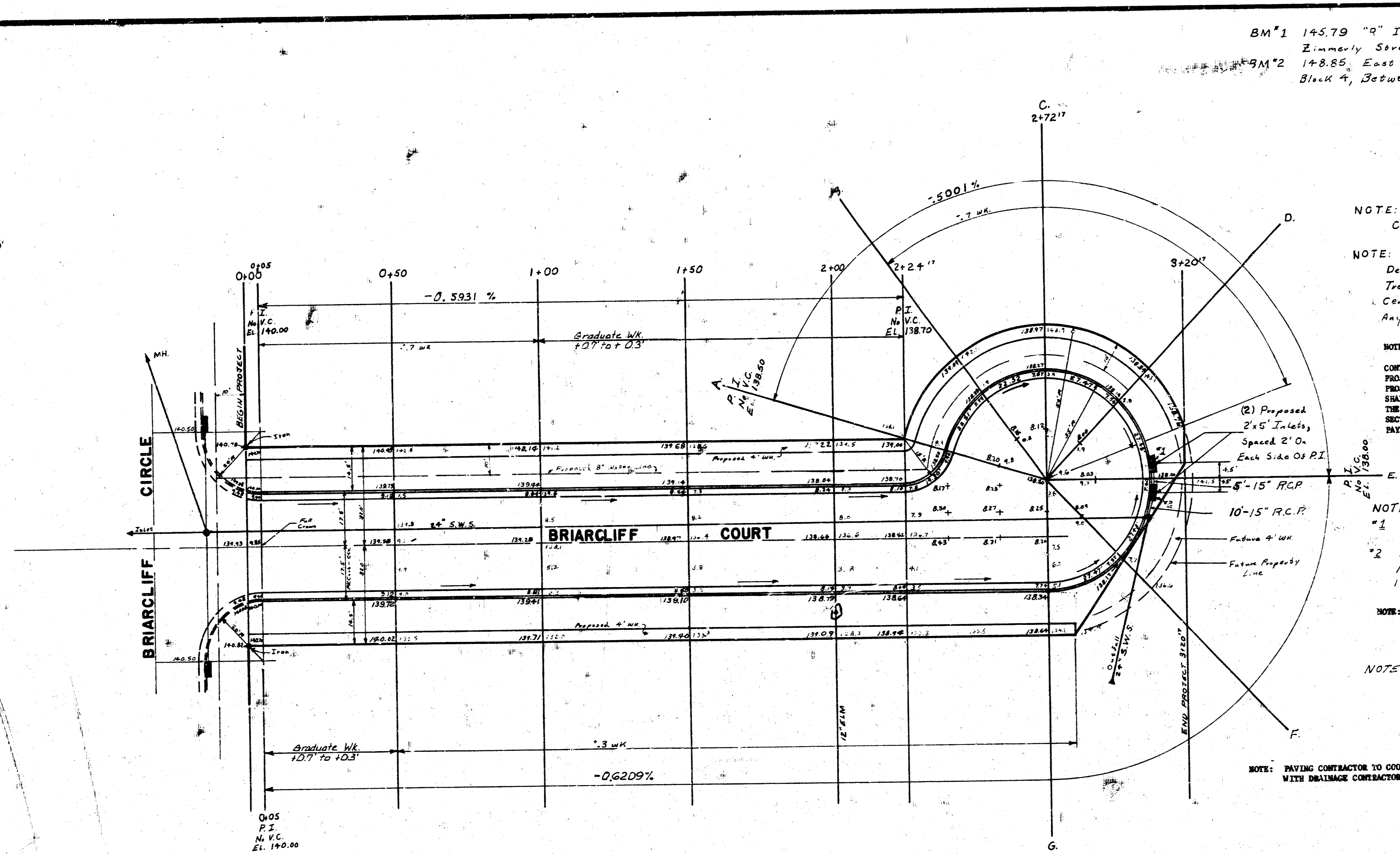


BRIARCLIFF COURT
 PLAN
 SHEET NO. 1
 CHAS. H. COURSEY, INC.

Scale: 1"=20'



BM#1 145.79 "9" In Pitche, So. End Pk. S.E. Corner Of
 Zimmerly Street & Briarcliff Circle.
 BM#2 148.85 East P.M. In East Link Village 2nd All,
 Block 4, Between Lots 8 & 10.

NOTE: The North Property Line Of Briarcliff
 Court Is The Base Line For This Project.
 NOTE: Type Of Sub-grade Treatment Shall Be
 Determined By The Field Engineer. Sub-grade
 Treatment May Consist Of Lime Treatment,
 Cement Treatment, Sub-grade Modification, Or
 Any Combination Of These.

NOTE:
 CONTRACTOR SHALL OBTAIN 360 CU. YDS. OF FILL MATERIAL FOR THIS
 PROJECT FROM EXCAVATED MATERIAL STOCKPILED ON BRIARCLIFF CIRCLE.
 PAYMENT FOR THIS FILL MATERIAL
 SHALL BE AT THE BID PRICE FOR CU. YDS. EXCAVATION DELIVERED ON
 THE PROJECT. FIELD ENGINEER TO TAKE ORIGINAL & FINAL CROSS-
 SECTIONS TO DETERMINE QUANTITY OF EXCAVATED MATERIAL FOR FINAL
 PAYMENT.

NOTE: Flow Elevations For Numbered Inlets
 #1 133.82 Flow Elev. 15" R.C.P. Out North Inlet
 #2 133.72 Flow Elev. 15" R.C.P. In South Inlet
 #3 133.62 Flow Elev. 15" R.C.P. Out South Inlet
 #4 133.52 Flow Elev. 15" R.C.P. In M.H.
 #5 131.07 Flow Elev. Of Existing M.H.

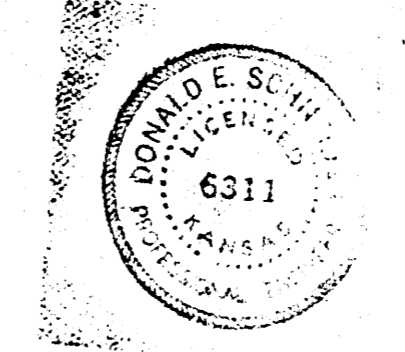
NOTE: CONTRACTOR TO GRADE PARKINGS, CLEAR RIGHT-
 OF-WAY, AND CONCRETE CONTRACTED FILL FOR
 FUTURE SIDEWALK. SIDEWALK SHALL BE CON-
 STRUCTED BY OTHERS.

NOTE: ■ Denotes Proposed Inlets To Be
 Built By Others.

NOTE: PAVING CONTRACTOR TO COORDINATE CONSTRUCTION
 WITH DRAINAGE CONTRACTOR.



1752.8 CY		Property Earthwork 1323.3 CY	
Excavation:	809.09	Compacted Fill:	1373.47 yd ³
+10%	89.87	+10%	151.08 yd ³
Total	899.00	Total	1524.55 yd ³
		Borrow:	360.00
		+10%	396.00
		Total	756.00 yd ³



BRIARCLIFF COURT
E.L. BRIARCLIFF CIRCLE TO
AND INCLUDING CUL-DE-SAC
35' ASPH. CONC. PAV'T.
CITY OF WICHITA, KANSAS
R.W. LINN CITY ENGINEER
 DATE: JUNE 1973
 SHEET: 1 OF 3
 PROJECT NO. DAKS 572049