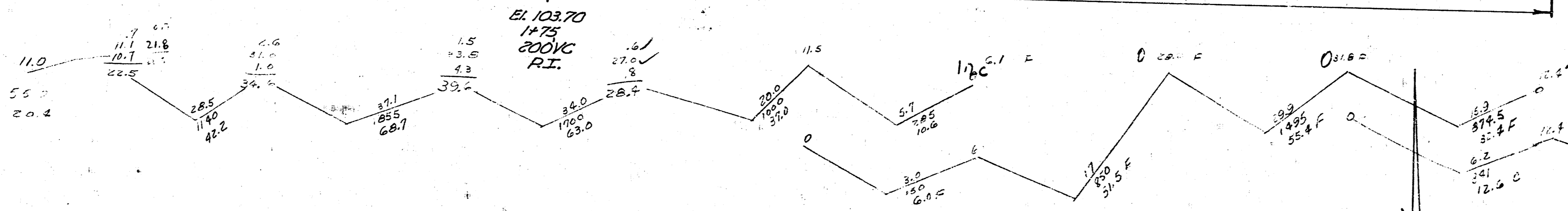
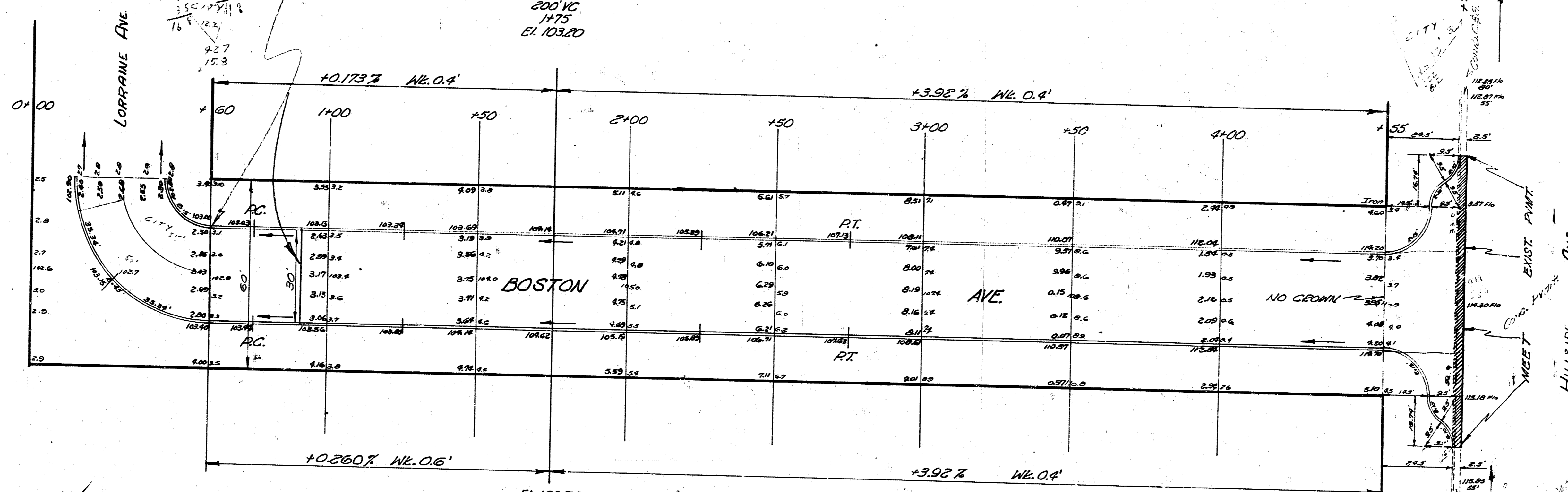


BM. "M" in Mueller Top Fire Hydrant N.E. Cor. Hillside & Grand 116.72

NOTE:
 Use PREPARED NON-EXTENDING TYPE EXPANSION (1" THICK)
 JOINT @ 0+60 & 0+90. NON-BID ITEM TO BE
 INCLUDED IN PRICE OF PAVT.

R.I.
 200 VC
 1475
 EL. 103.20



Bl. 519
 Survey 505
 Exp. 248
 Checked J.T.

Total Earth Work

Property	City	City
0.0	0.0	0.0
20.4	31.5	0.2
22.2	55.4	3.9
28.7	55.4	10.9
32.0	125.3	22.0
37.9	107.8	59.0
12.6	137.8	116.5
28.5		67.9
149		
286.0		

BOSTON AVE
 W.L. LORRAINE TO W.L. HILLSIDE
 30 CONC. CB.

CITY OF WICHITA, KANSAS
 B.E. SMITH CITY ENGINEER
 JAN. 12, 1953 Proj. No. C12-145



1"=20'