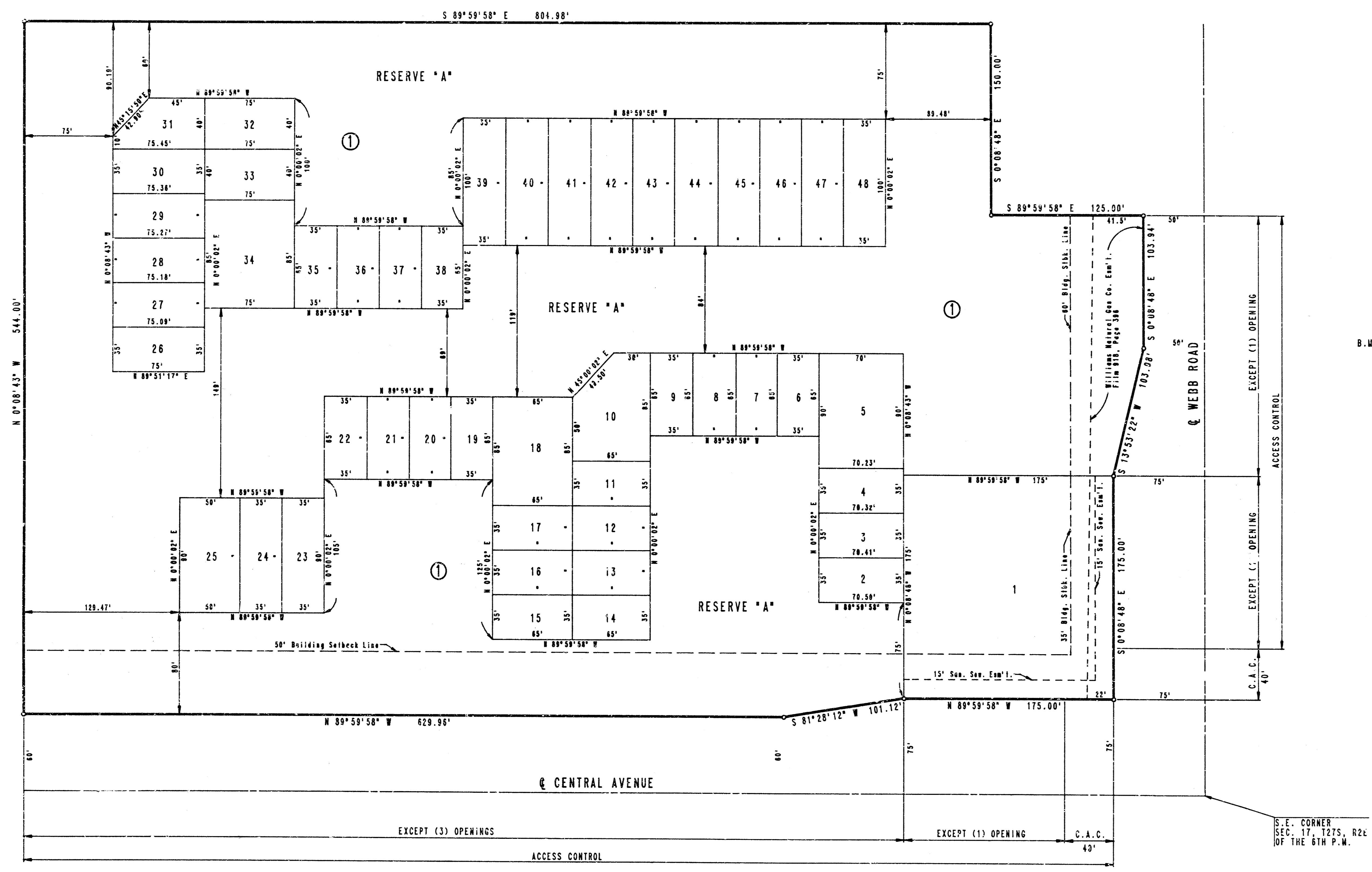



PROJECT NO.	SHEET NO.	TOTAL SHEETS
472-78-245-81942-000-000-001	2	10

CORPORATE LAKES

AN ADDITION TO WICHITA, SEDGWICK COUNTY, KANSAS




 SCALE: 1" = 50'
 ○ = IRON SET
 B.M. - CITY OF WICHITA B.M. DISC
 32 FT. NORTH AND 42 FT. WEST OF
 INTERSECTION OF CENTER LINES
 OF CENTRAL AND WEBB RD.
 CITY DATUM ELEV. -172.38

CORPORATE LAKES

PLAT

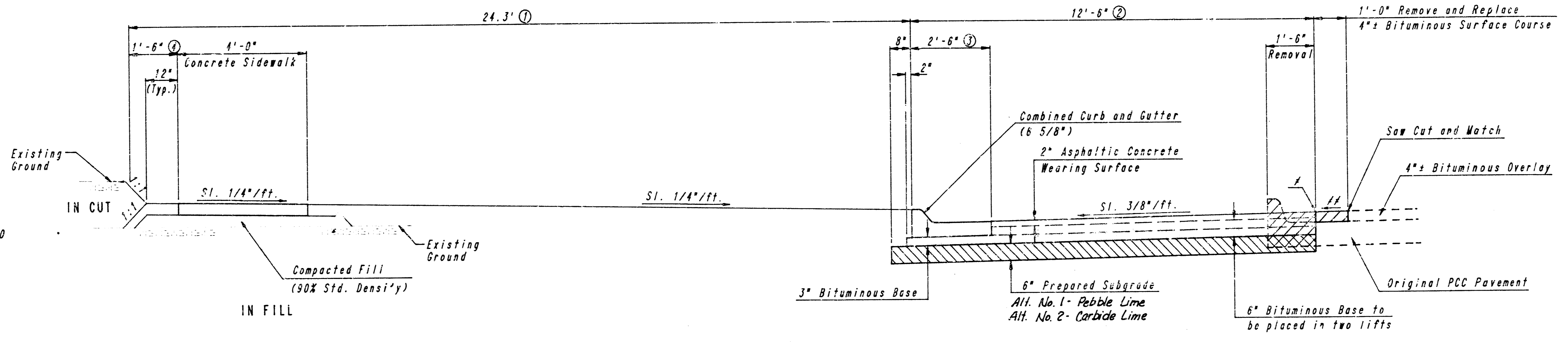
PROFESSIONAL ENGINEERING CONSULTANTS, P.A.
ENGINEERS
WICHITA, KANSAS

Designed by	Checked by
Drawn by DEP	Date SEPT., 1989 Job No.

FILMED FROM THE BEST AVAILABLE COPY

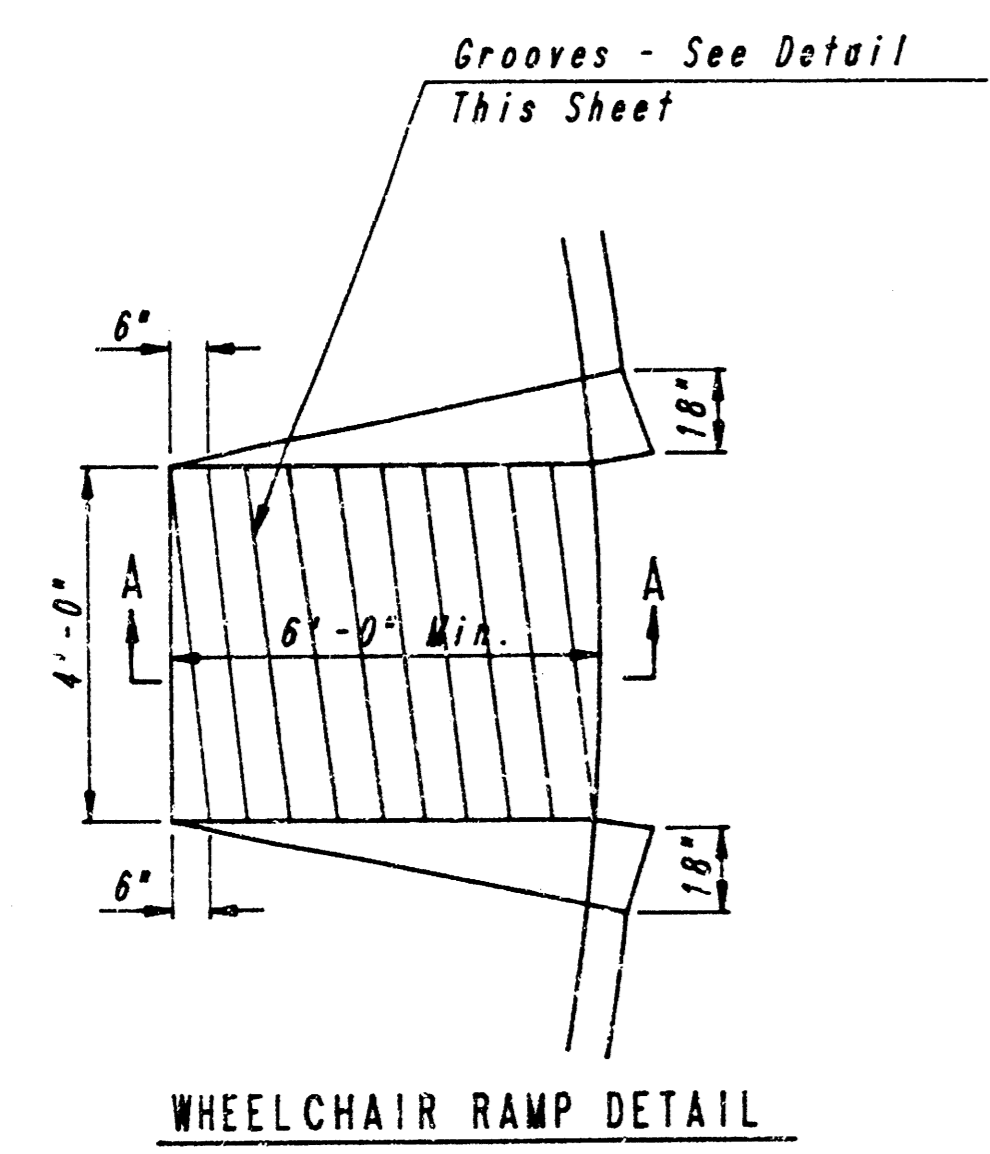
PROJECT NO.	SHEET NO.	TOTAL SHEETS
472-76-245-81942-000-001	3	10

- ① Varies from 24.3' at Sta. 9+22.50 to 34.5' at Sta. 10+03.
- ② Varies from 12'-6" at Sta. 9+22.50 to 1'-6" at Sta. 10+03.
- ③ Varies Sta. 9+74.53 to Sta. 10+03. See Detail Sheet No. 6.
- ④ Varies from 1'-6" at Sta. 7+20 to 6'-0" at Sta. 7+24.50. 6'-0" Sta. 7+24.50 to Sta. 9+98.70. Varies from 6'-0" at Sta. 9+98.70 to 14'-0" at Sta. 10+06.70.

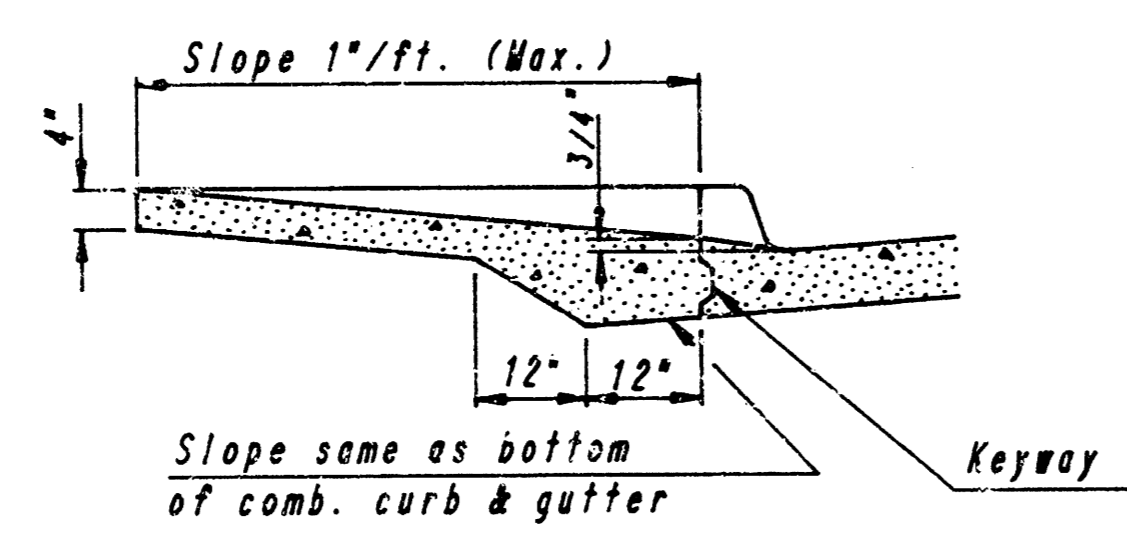


TYPICAL SECTION
Sta. 1+93.50 to Sta. 6+25.76 & Sta. 7+03.76 to Sta. 10+03

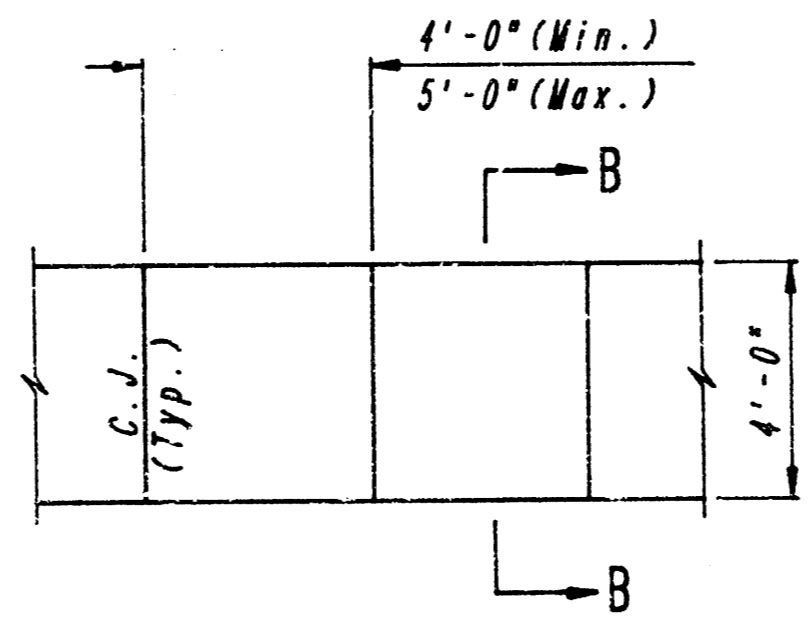
SAW CUT AND REMOVE EXISTING PAVEMENT (PCC PAVEMENT, MONOLITHIC EDGE CURB AND 4" BITUMINOUS OVERLAY). 0.19" BELOW T.C.
SLOPE VARIES TO MATCH EXISTING



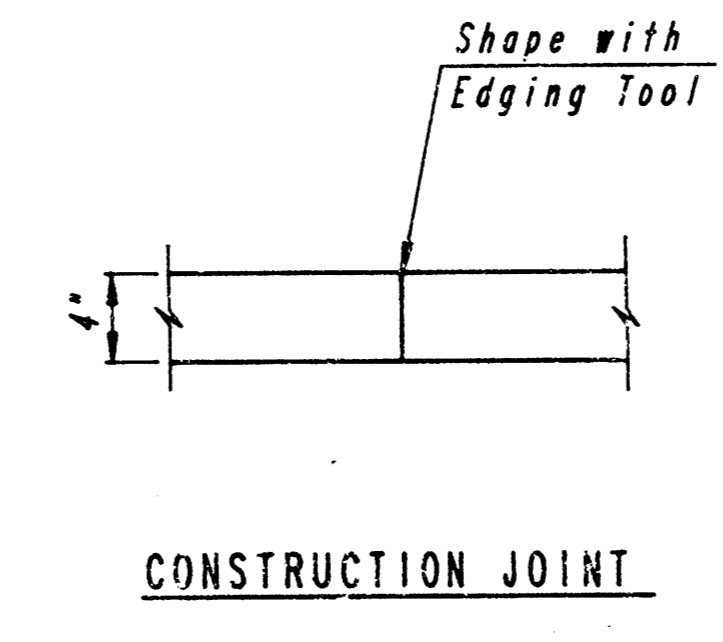
WHEELCHAIR RAMP DETAIL



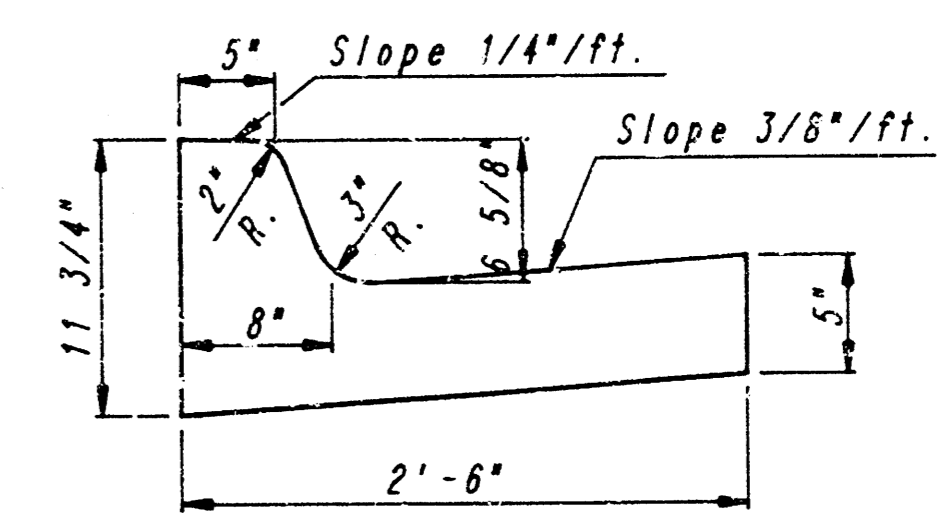
SECTION A-A



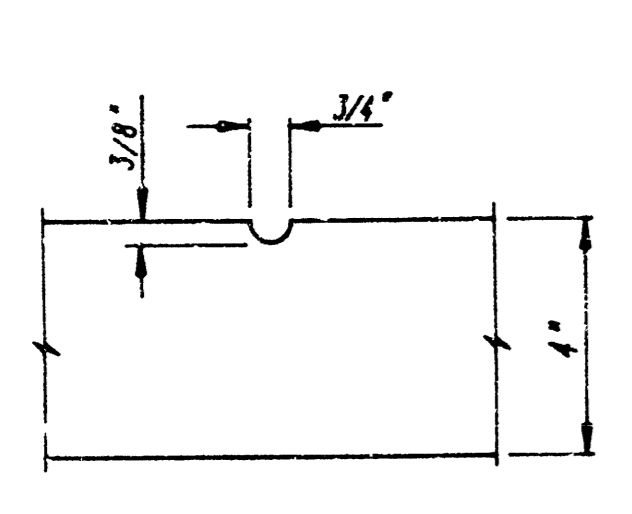
PLAN



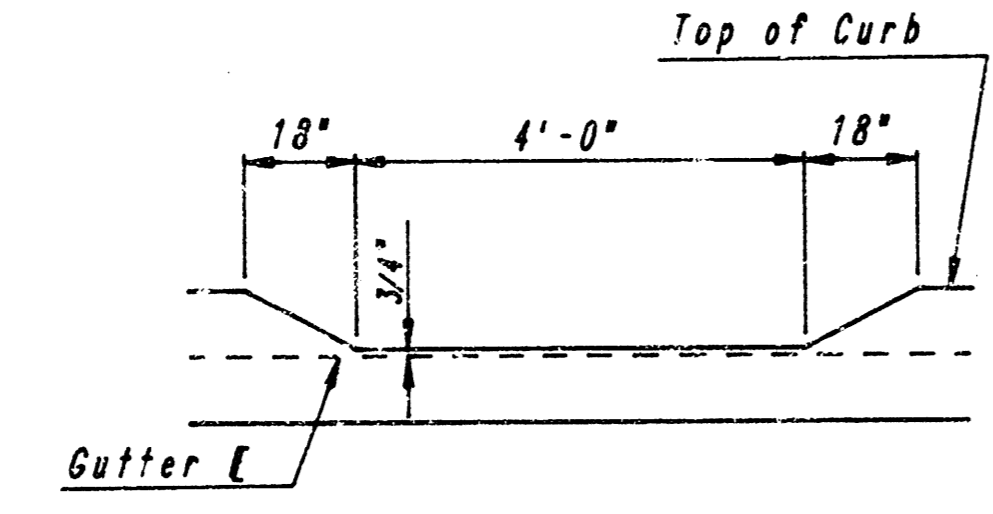
CONSTRUCTION JOINT



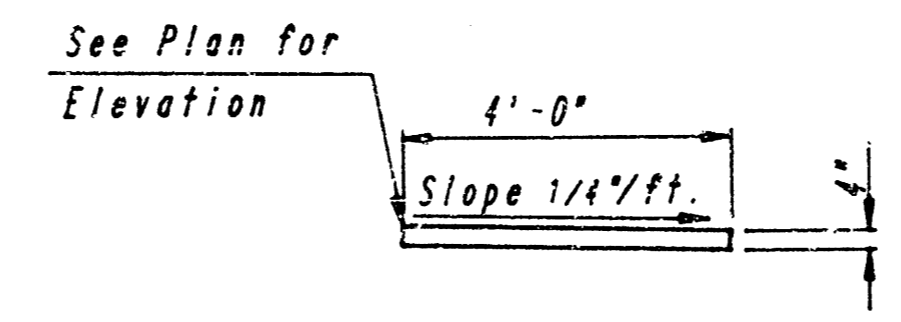
COMBINED CURB & GUTTER



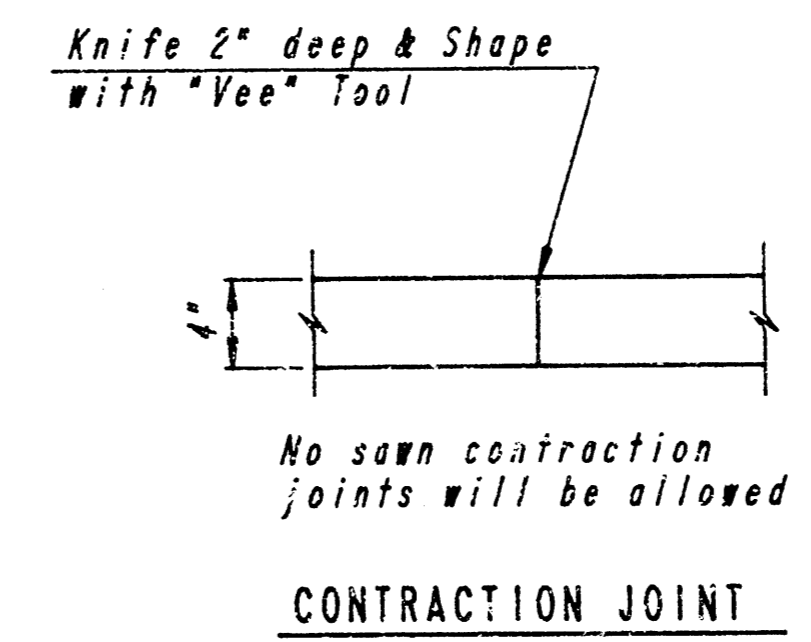
GROOVE DETAIL



DEPRESSED CURB DETAIL



SECTION B-B



CONTRACTION JOINT

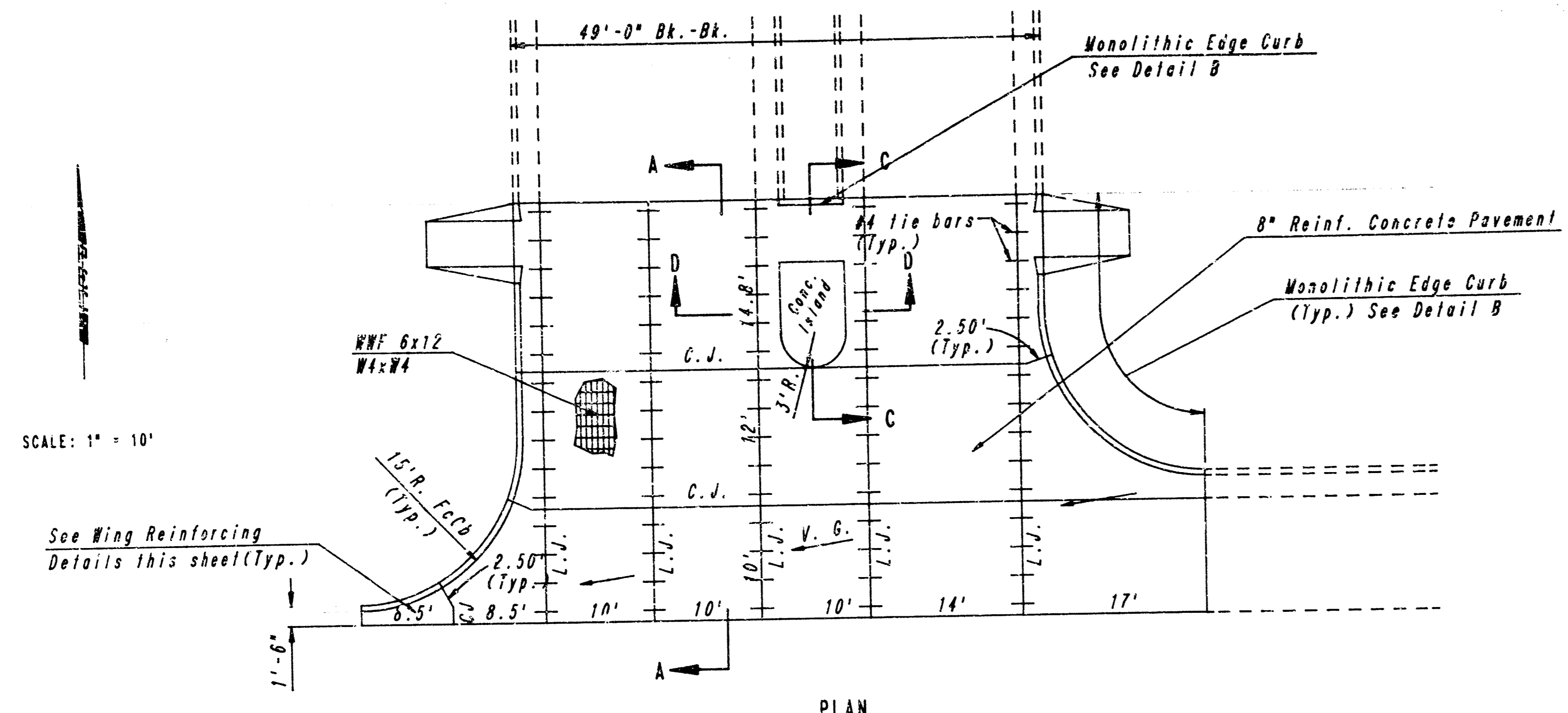
TYPICAL WHEELCHAIR RAMP DETAILS

4" WALK DETAILS

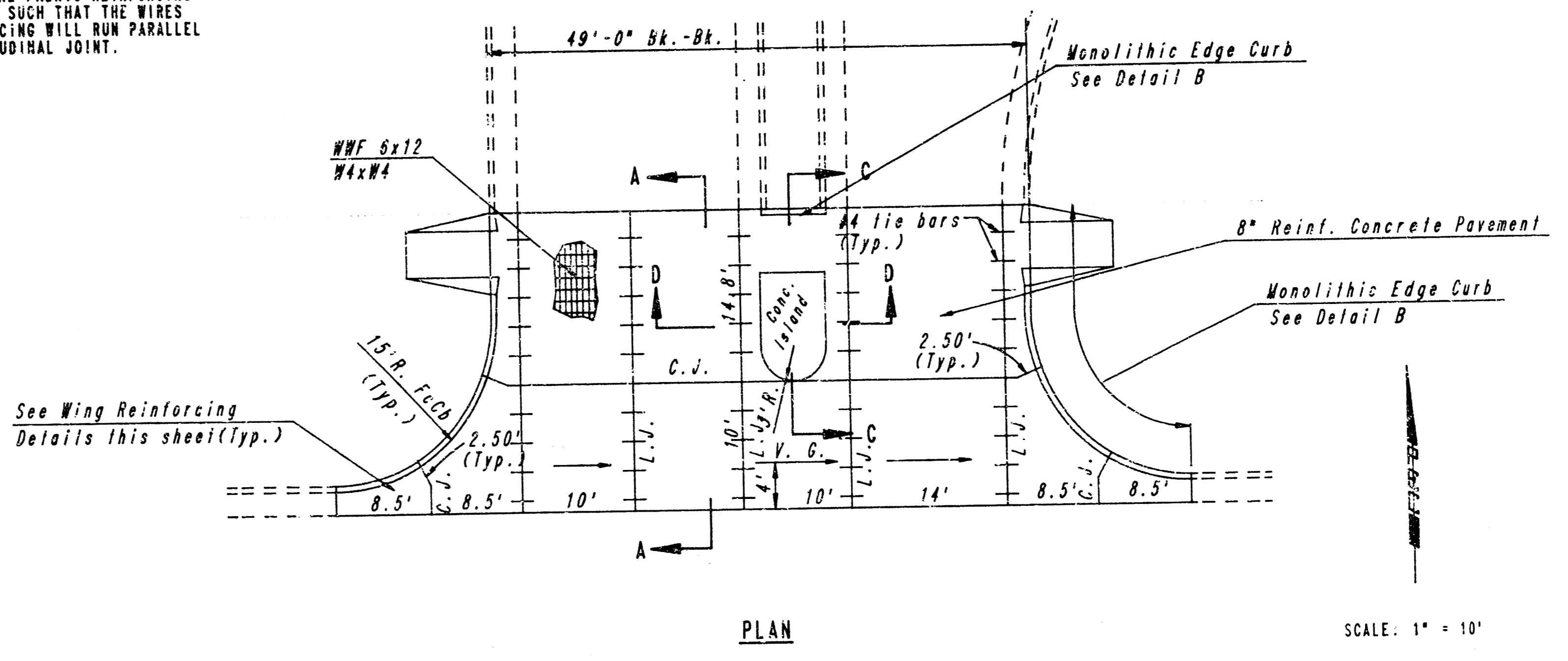
CORPORATE LAKES
TYPICAL SECTION AND MISC. PAVING DETAILS
PROFESSIONAL ENGINEERING CONSULTANTS, P.A.
ENGINEERS
WICHITA, KANSAS
Designed by CSB, GDD
Checked by
Drawn by DEP
Date SEPT., 1989 Job No. 39277

FILMED FROM THE BEST AVAILABLE COPY

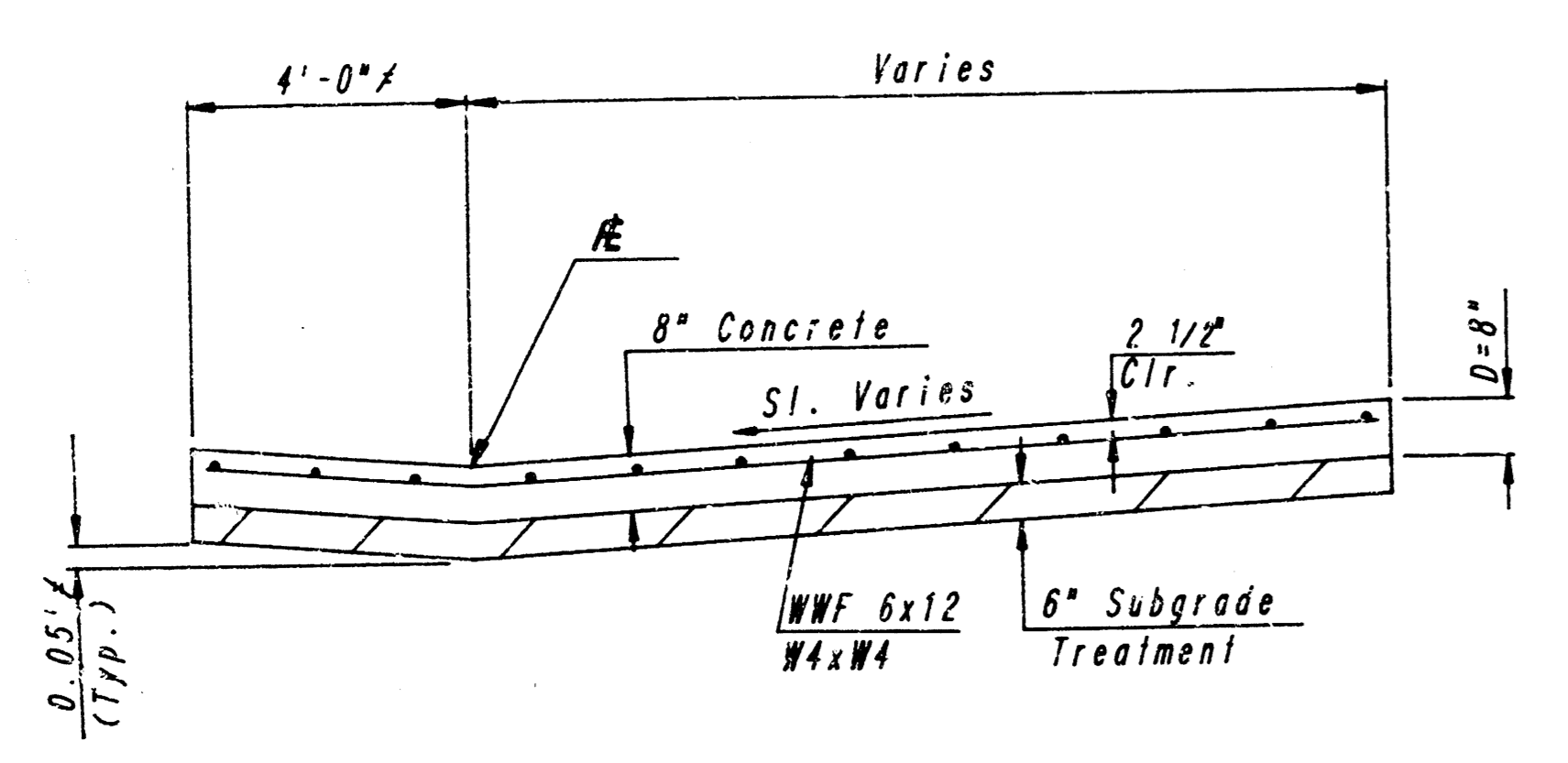
PROJECT NO.	SHEET NO.	TOTAL SHEETS
472-76-245-81942-000-001	4	10



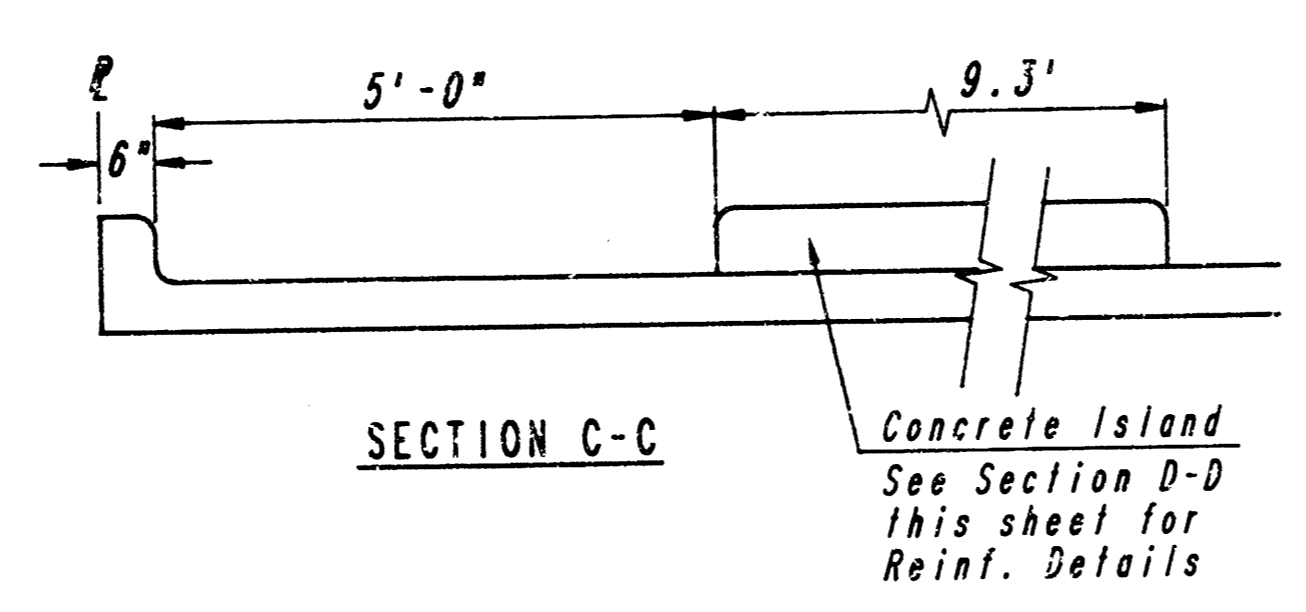
PLAN
SPECIAL REINFORCED CONCRETE DRIVEWAY
Sta. 1+15.50 to Sta. 1+93.50



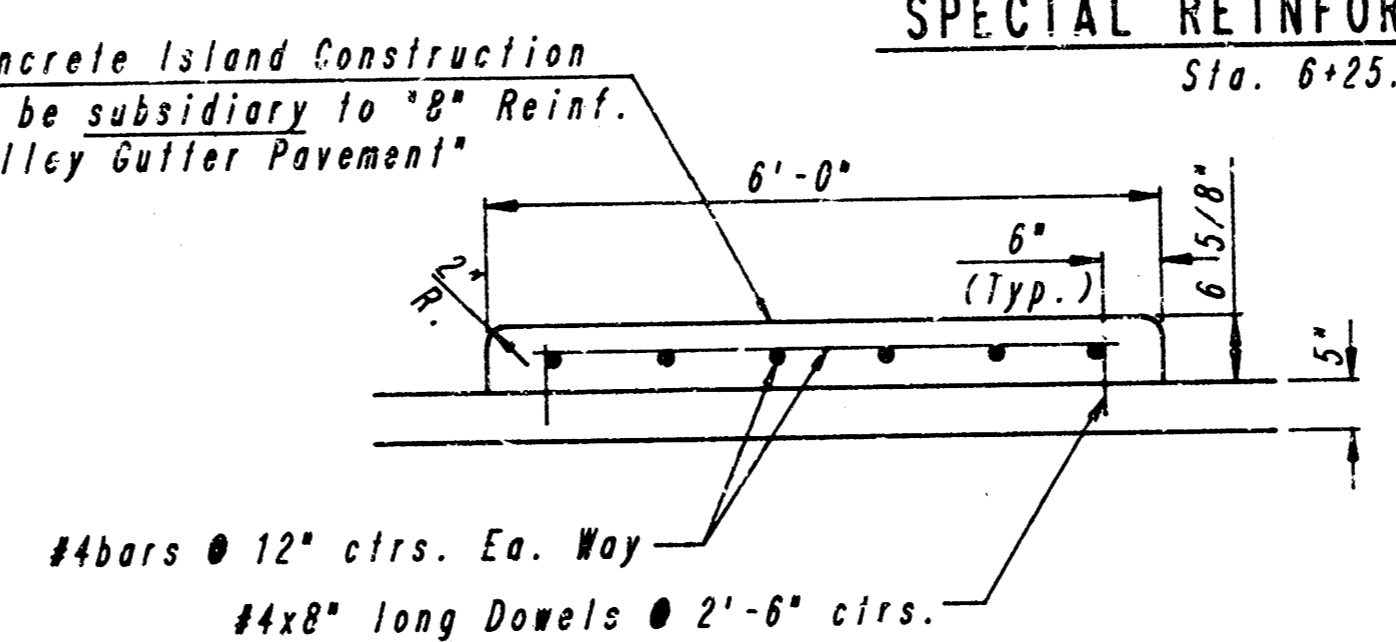
PLAN
SPECIAL REINFORCED CONCRETE DRIVEWAY
Sta. 6+25.76 to Sta. 7+03.79



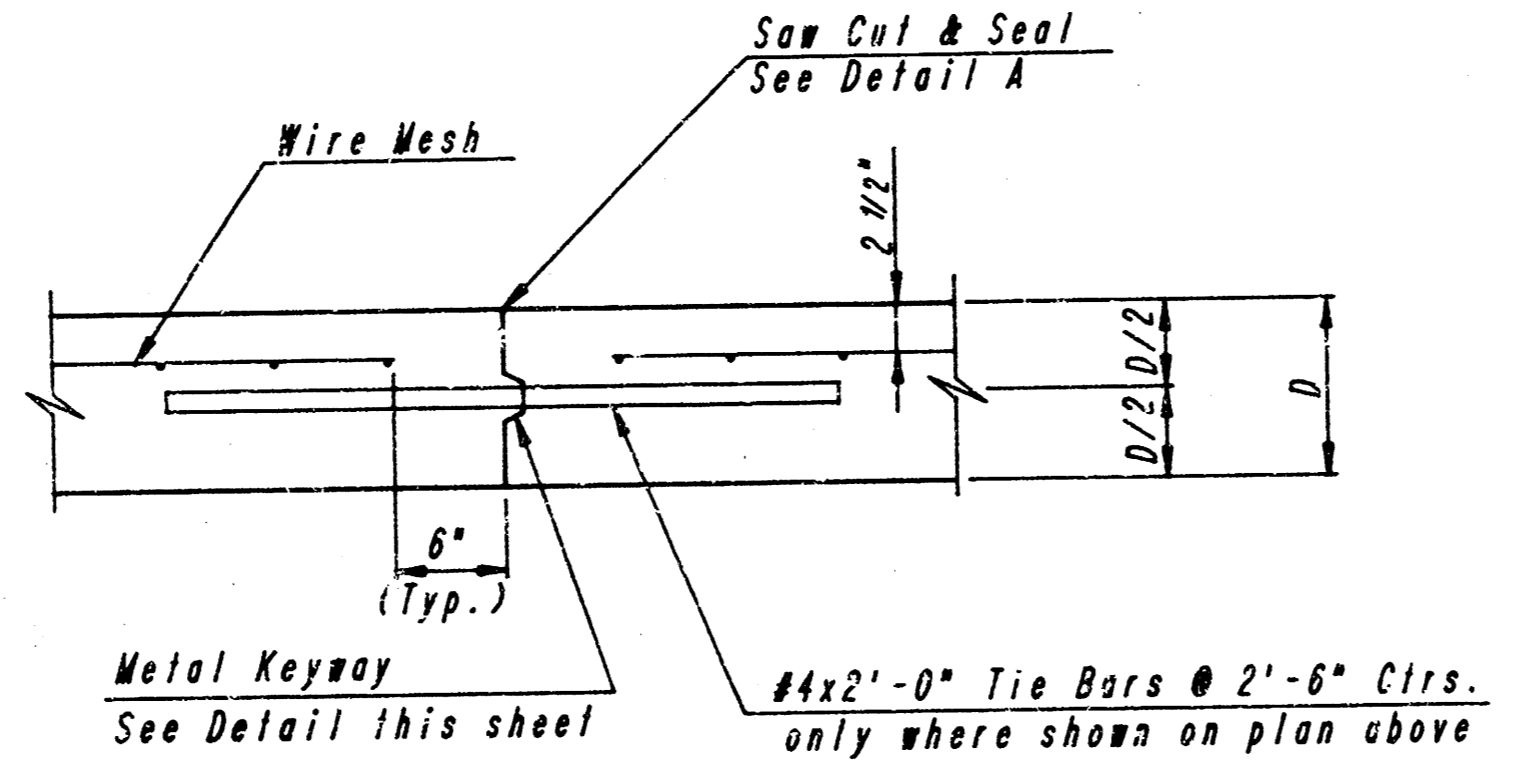
SECTION A-A
NOTE: OMIT REINFORCING MESH AT ALL JOINTS
NOTE: ALL REINFORCEMENT SHALL BE ADEQUATELY SUPPORTED BY BAR CHAIRS IN THE REQUIRED POSITION UNLESS APPROVED BY THE ENGINEER.
VARIES FOR SPECIAL REINF. CONC. DRIVEWAY (STA. 1+15.50 TO STA. 1+93.50) SEE PLAN



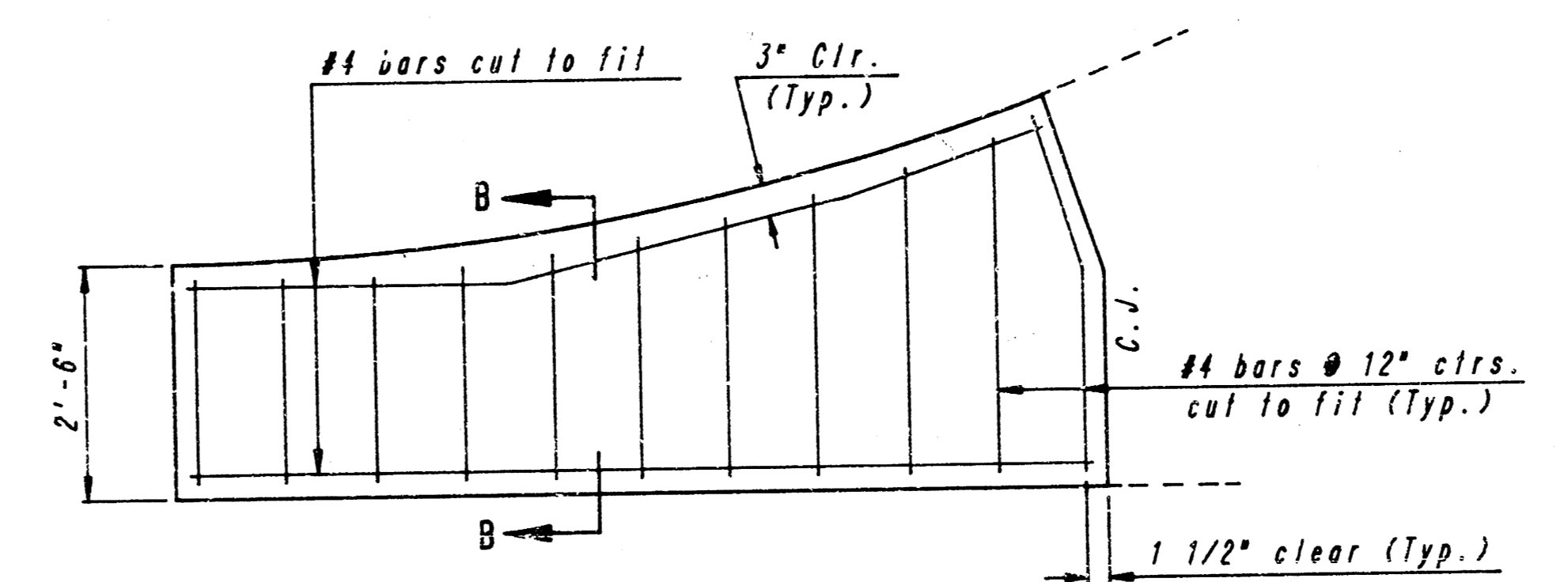
SECTION C-C
Concrete Island
See Section D-D
This sheet for Reinf. Details



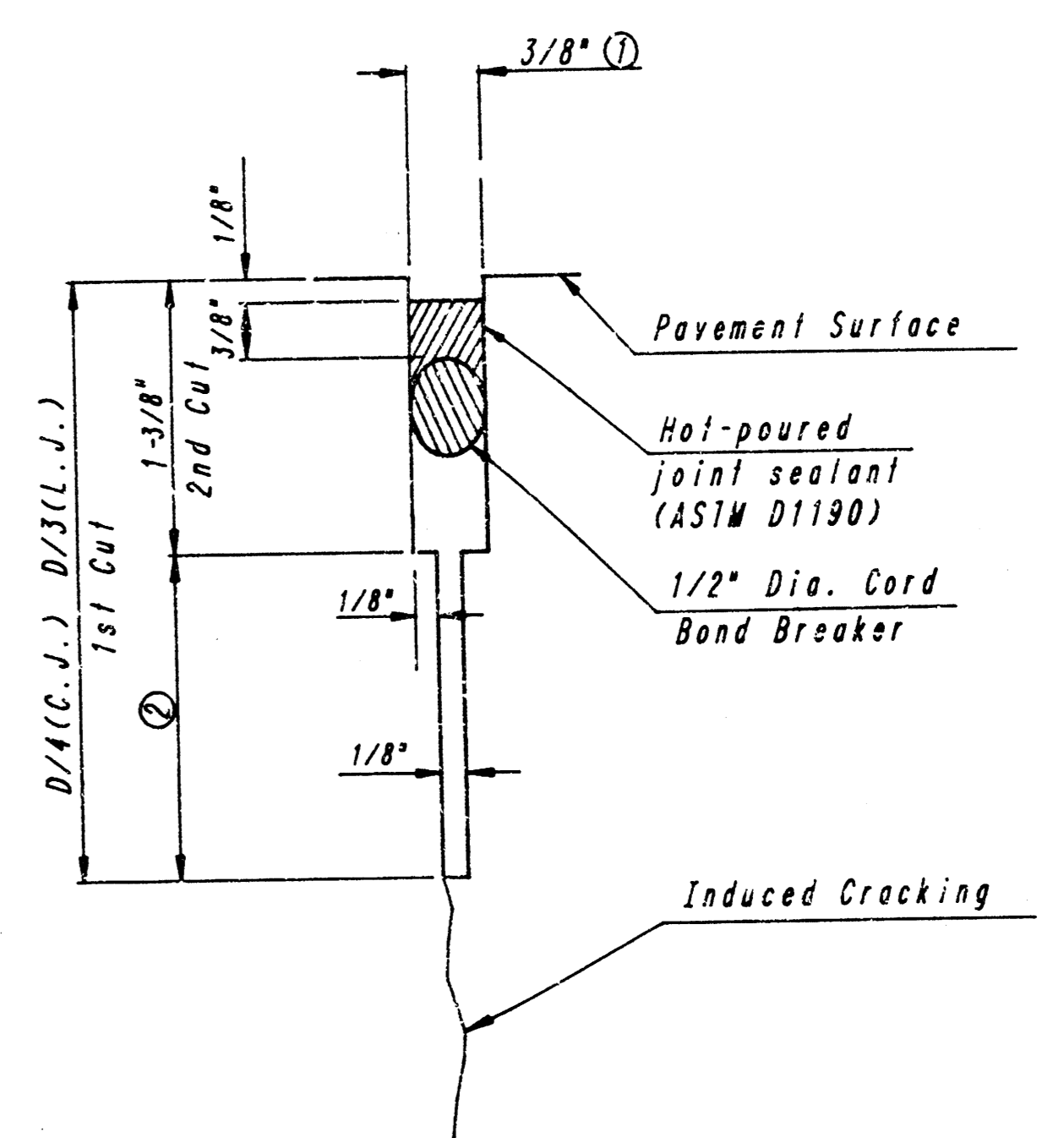
SECTION D-D
Concrete Island Construction to be subsidiary to 'B' Reinf. Valley Gutter Pavement



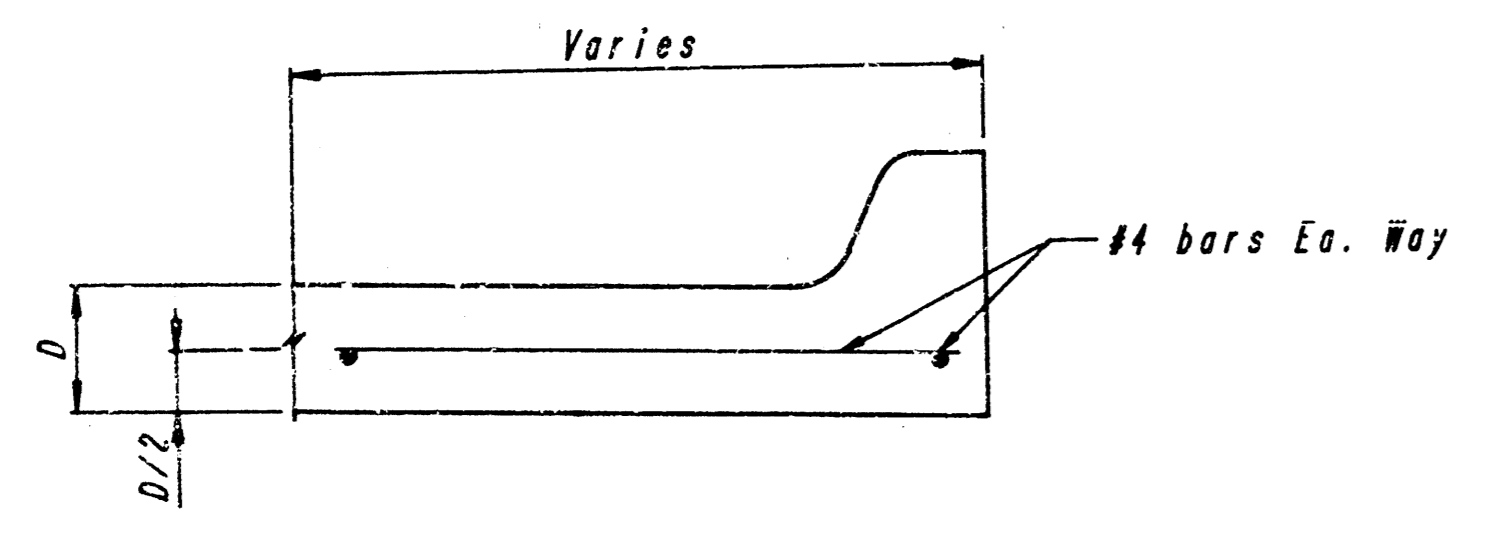
LONGITUDINAL CONSTRUCTION JOINT DETAIL
REINFORCED PAVEMENT
(TRANSVERSE SECTION)
(ALTERNATE L.J.)



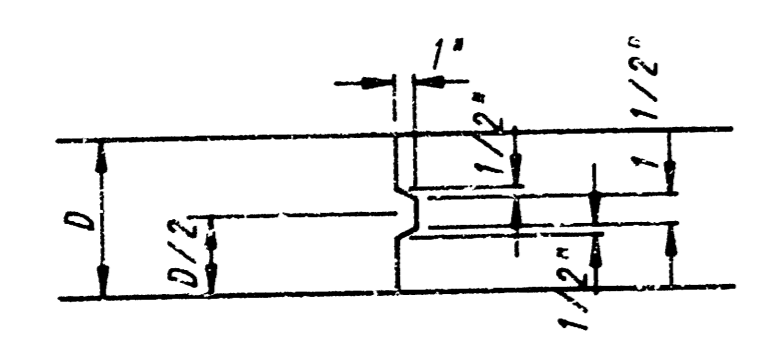
WING REINFORCING DETAIL
NOTE: OMIT WIRE FABRIC REINFORCING IN THIS SECTION.



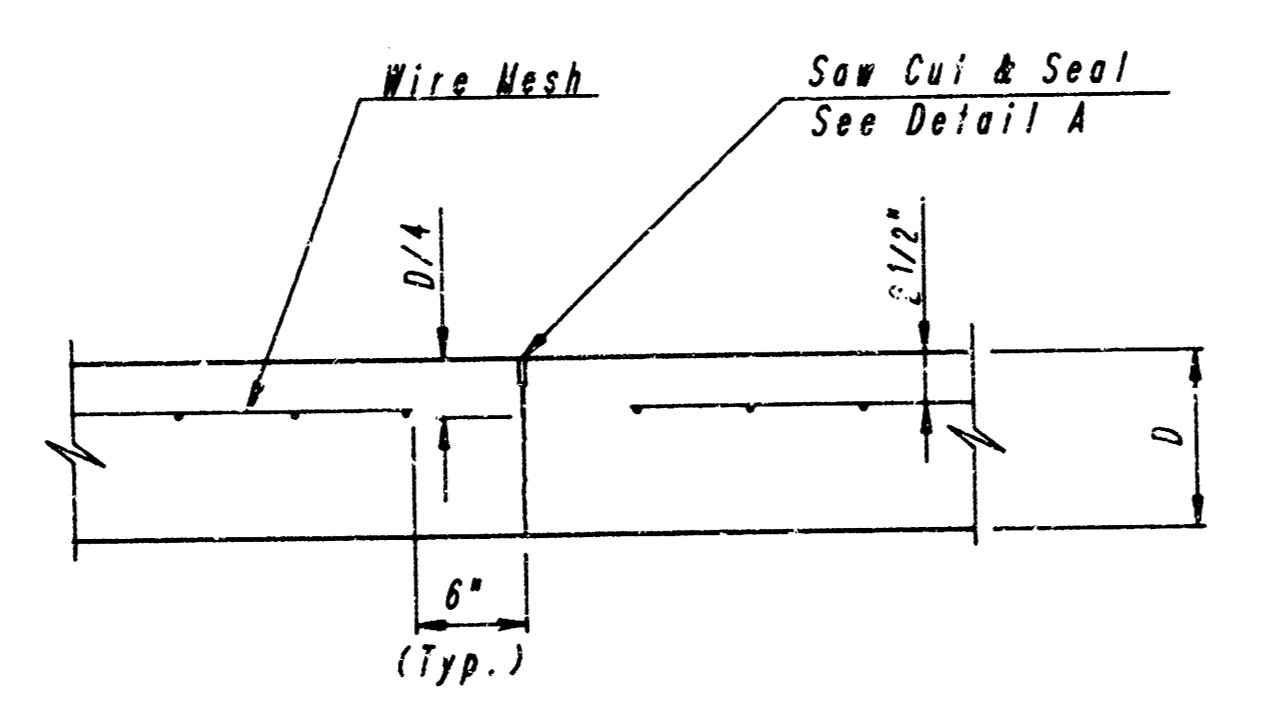
DETAIL A
1. To be accomplished in 2 cuts for Longitudinal Joints & Contraction Joints. Initial cut to be 1/8" wide.
2. Eliminate bottom of cut when metal keyway is used as part of Longitudinal or Transverse Construction Joint and at Doweled Construction Joint Locations.



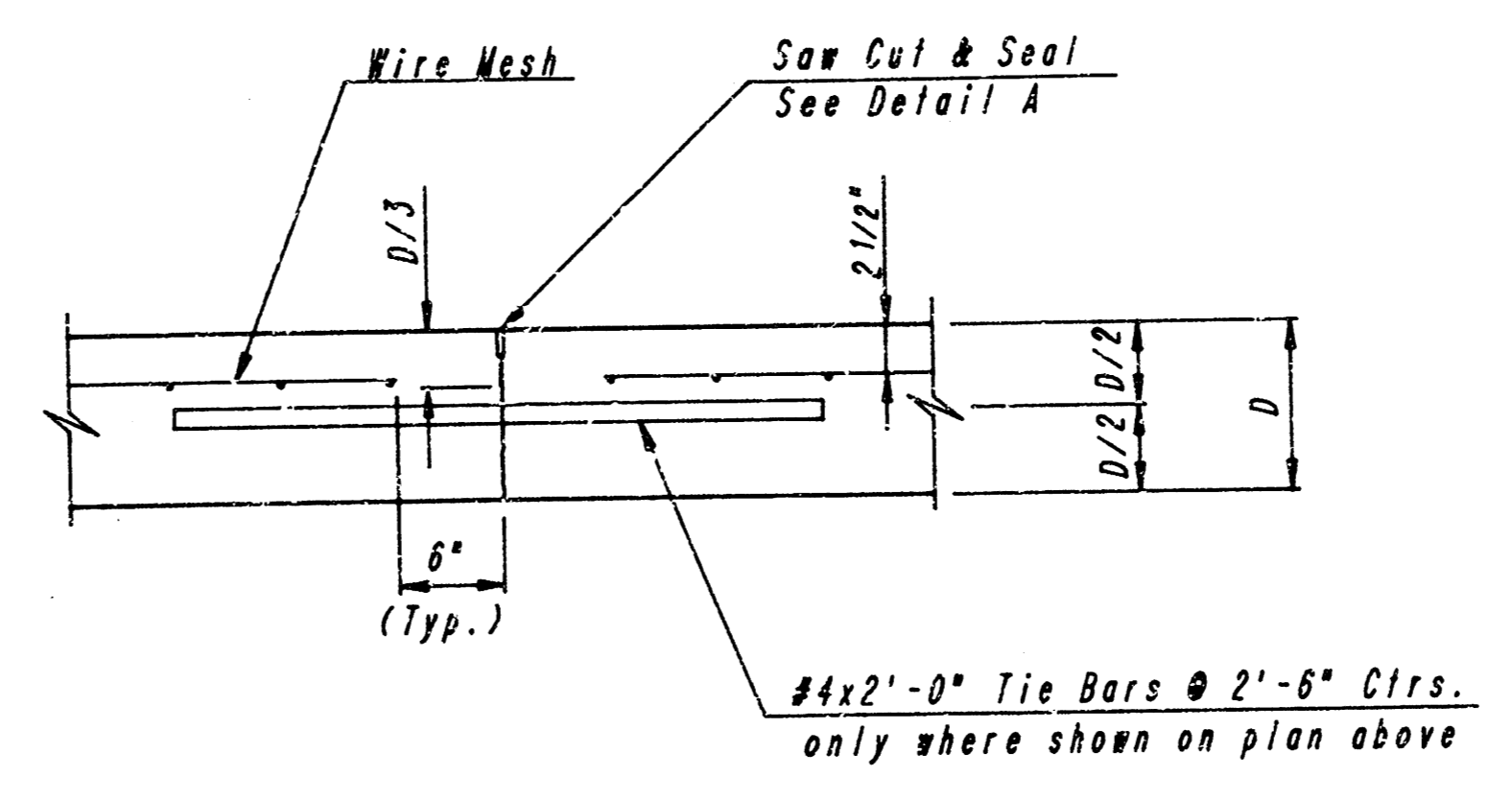
SECTION B-B



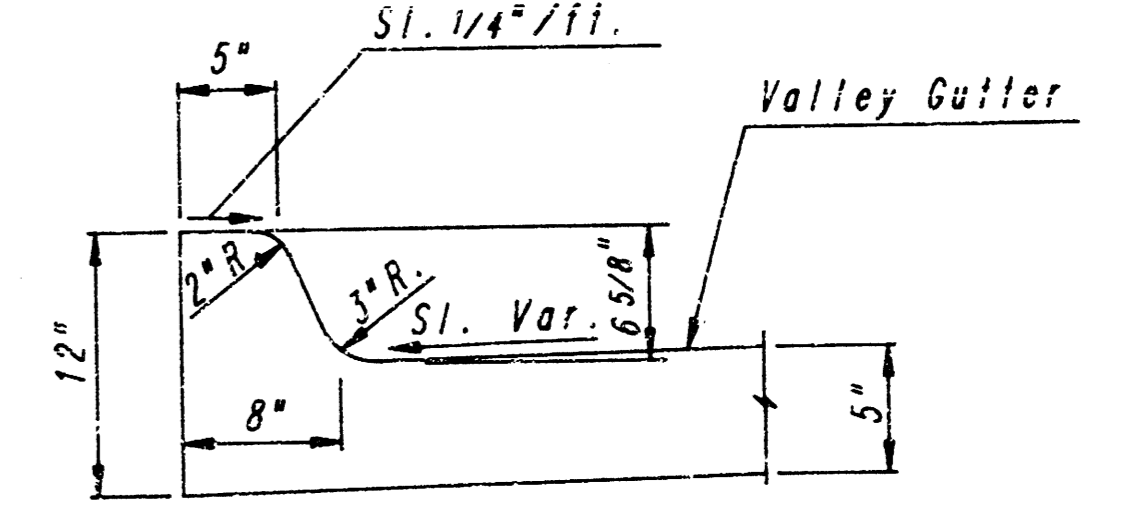
KEYWAY DETAIL



CONTRACTION JOINT DETAIL
REINFORCED PAVEMENT
(C.J.)



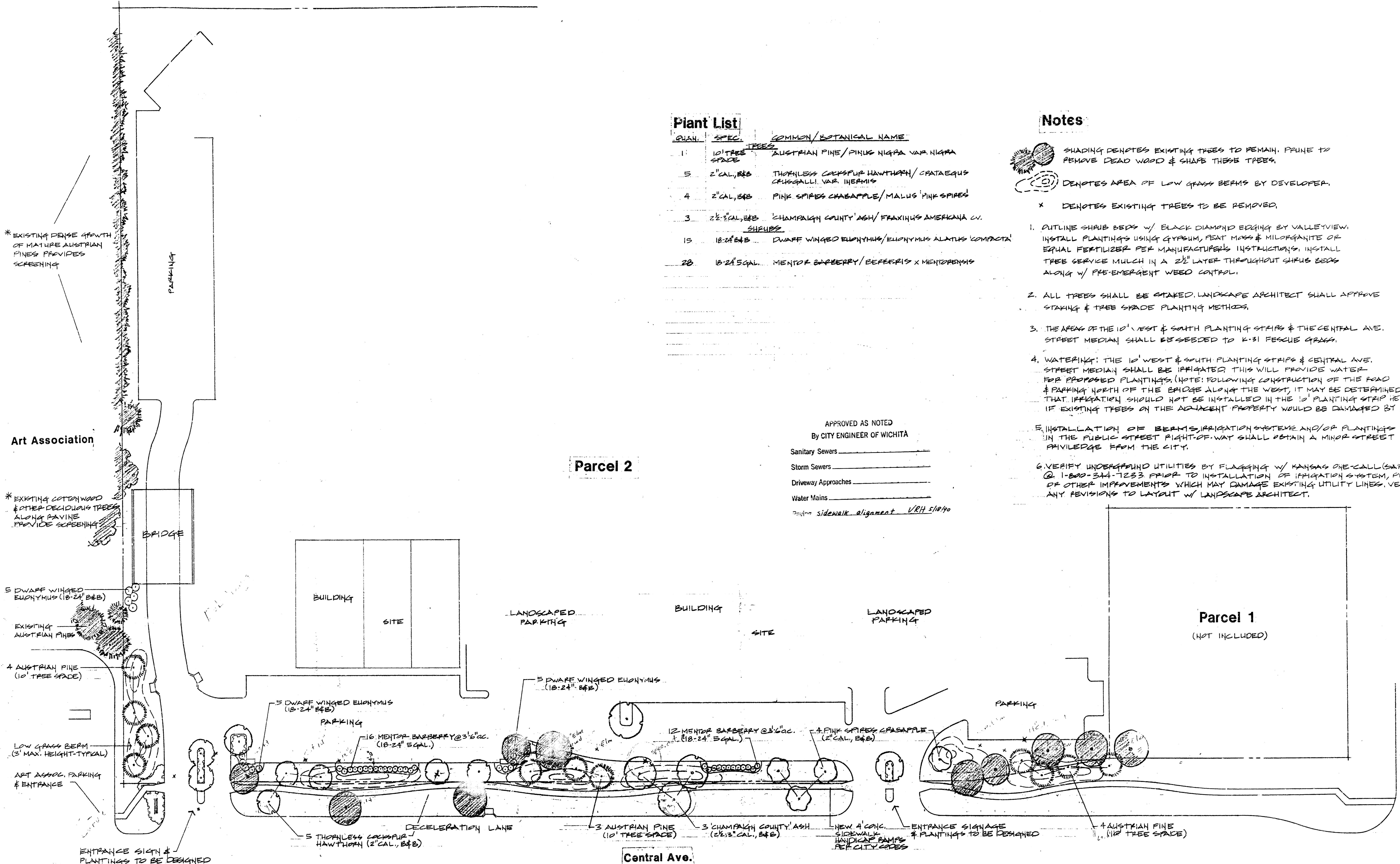
LONGITUDINAL JOINT DETAIL
REINFORCED PAVEMENT
(TRANSVERSE SECTION)
(L.J.)



DETAIL B

CORPORATE LAKES
REINFORCED CONCRETE DRIVEWAY DETAILS
PROFESSIONAL ENGINEERING CONSULTANTS, P.A.
ENGINEERS
WICHITA, KANSAS
Designed by CSB, RDP
Checked by
Drawn by DEP
Date SEPT., 1989 Job No. 89277

FILMED FROM THE BEST AVAILABLE COPY



Plant List

QUAN.	SPEC.	COMMON/BOTANICAL NAME
1	10' TREE SPACE	AUSTRIAN PINE/PINUS NIGRA VAR. NIGRA
5	2" CAL, B&B	THORNLESS COCKSPUR HAWTHORN/CRATAEGUS CRUGGALLI VAR. HERMIS
4	2" CAL, B&B	PINK SPIRES CHESAPEAKE/MALUS PINK SPIRES
3	2 1/2" CAL, B&B	CHAMPAIGN COUNTY ASH/FRAXINUS AMERICANA CV.
15	18-24" B&B	DWARF WINGED EUONYMUS/EUONYMUS ALATUS COMPACTA
20	18-24" 5 GAL	MENTOR BARBERRY/BERBERIS X MENTROPENSIS

Notes

- SHADING DENOTES EXISTING TREES TO REMAIN. PRUNE TO REMOVE DEAD WOOD & SHAPE THESE TREES.
- (C) DENOTES AREA OF LOW GRASS BERMS BY DEVELOPER.
- X DENOTES EXISTING TREES TO BE REMOVED.
- 1. OUTLINE SHRUB BEDS W/ BLACK DIAMOND EDGING BY VALLEYVIEW. INSTALL PLANTINGS USING GYPSUM, PEAT MASS & MILORGANITE OR EQUAL FERTILIZER PER MANUFACTURER'S INSTRUCTIONS. INSTALL TREE SERVICE MULCH IN A 2 1/2" LAYER THROUGHOUT SHRUB BEDS ALONG W/ PRE-EMERGENT WEED CONTROL.
- 2. ALL TREES SHALL BE STAKED. LANDSCAPE ARCHITECT SHALL APPROVE STAKING & TREE SHAPE PLANTING METHODS.
- 3. THE AREAS OF THE 10' WEST & SOUTH PLANTING STRIPS & THE CENTRAL AVE. STREET MEDIAN SHALL BE SEED TO K-31 FESCUE GRASS.
- 4. WATERING: THE 10' WEST & SOUTH PLANTING STRIPS & CENTRAL AVE. STREET MEDIAN SHALL BE IRRIGATED THIS WILL PROVIDE WATER FOR PROPOSED PLANTINGS. (NOTE: FOLLOWING CONSTRUCTION OF THE ROAD & PARKING NORTH OF THE BRIDGE ALONG THE WEST, IT MAY BE DETERMINED THAT IRRIGATION SHOULD NOT BE INSTALLED IN THE 10' PLANTING STRIP HERE IF EXISTING TREES ON THE ADJACENT PROPERTY WOULD BE DAMAGED BY RUNOFF)
- 5. INSTALLATION OF BERMS, IRRIGATION SYSTEMS AND/OR PLANTINGS IN THE PUBLIC STREET RIGHT-OF-WAY SHALL OBTAIN A MINOR STREET PRIVILEGE FROM THE CITY.
- 6. VERIFY UNDERGROUND UTILITIES BY FLAGGING W/ KANSAS ONE-CALL (SAFE-DIG) @ 1-800-344-7233 PRIOR TO INSTALLATION OF IRRIGATION SYSTEM, PLANTINGS OR OTHER IMPROVEMENTS WHICH MAY DAMAGE EXISTING UTILITY LINES. VERIFY ANY REVISIONS TO LAYOUT W/ LANDSCAPE ARCHITECT.

APPROVED AS NOTED
BY CITY ENGINEER OF WICHITA

Sanitary Sewers _____
Storm Sewers _____
Driveway Approaches _____
Water Mains _____
Proposed sidewalk alignment URH 5/10/90

Parcel 2

Parcel 1
(NOT INCLUDED)

Webb Rd.

10' PLANTING STRIPS - WEST & SOUTH

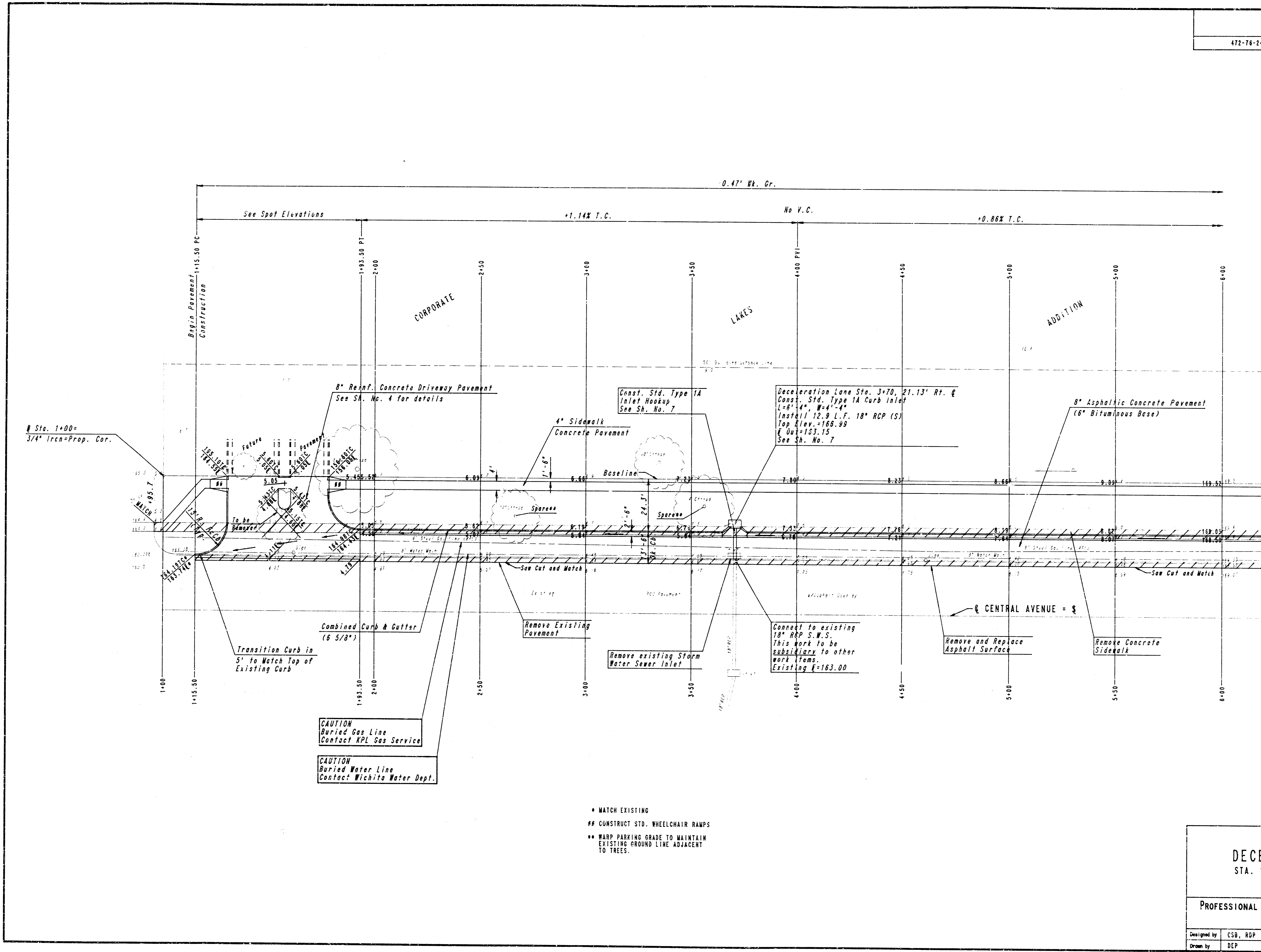
ATTACHED To Decel Lane on N. Side of Central (472-81947-001)

	CORPORATE LAKES		Project No.: L89037
	Central and Webb		Scale: 1" = 30'
	JONES PROFESSIONAL ASSOCIATION		Drawn By: D.P.
	721 West Ninth Street Wichita, Kansas 67203 (316) 262-4525		Revisions: 1-2-90 5-25-90 5-17-90
			SHEET 1 OF 1

FILMED FROM THE BEST AVAILABLE COPY

PROJECT NO. 472-78-245-81942-000-001	SHEET NO. 5	TOTAL SHEETS 10
---	----------------	--------------------

SCALE: 1" = 20'



- * MATCH EXISTING
- ** CONSTRUCT STD. WHEELCHAIR RAMPS
- *** WARP PARKING GRADE TO MAINTAIN EXISTING GROUND LINE ADJACENT TO TREES.

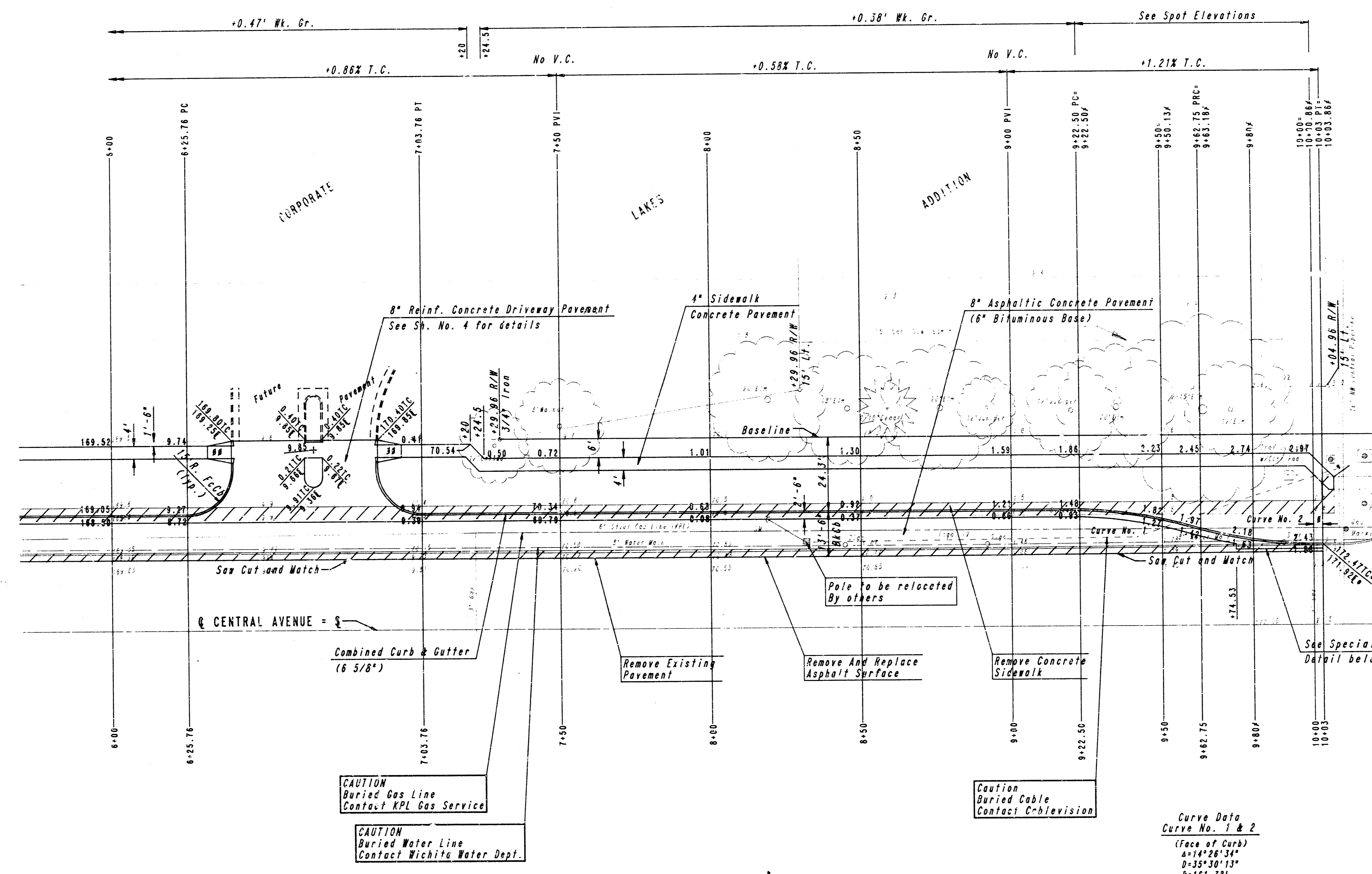
CORPORATE LAKES
DECELERATION LANE
STA. 1+00.00 TO STA. 6+00.00

PROFESSIONAL ENGINEERING CONSULTANTS, P.A.
ENGINEERS
WICHITA, KANSAS

Designed by CSB, RGP	Checked by
Drawn by DEP	Date SEPT., 1989 Job No. 89277

FILMED FROM THE BEST AVAILABLE COPY

SCALE: 1" = 20'

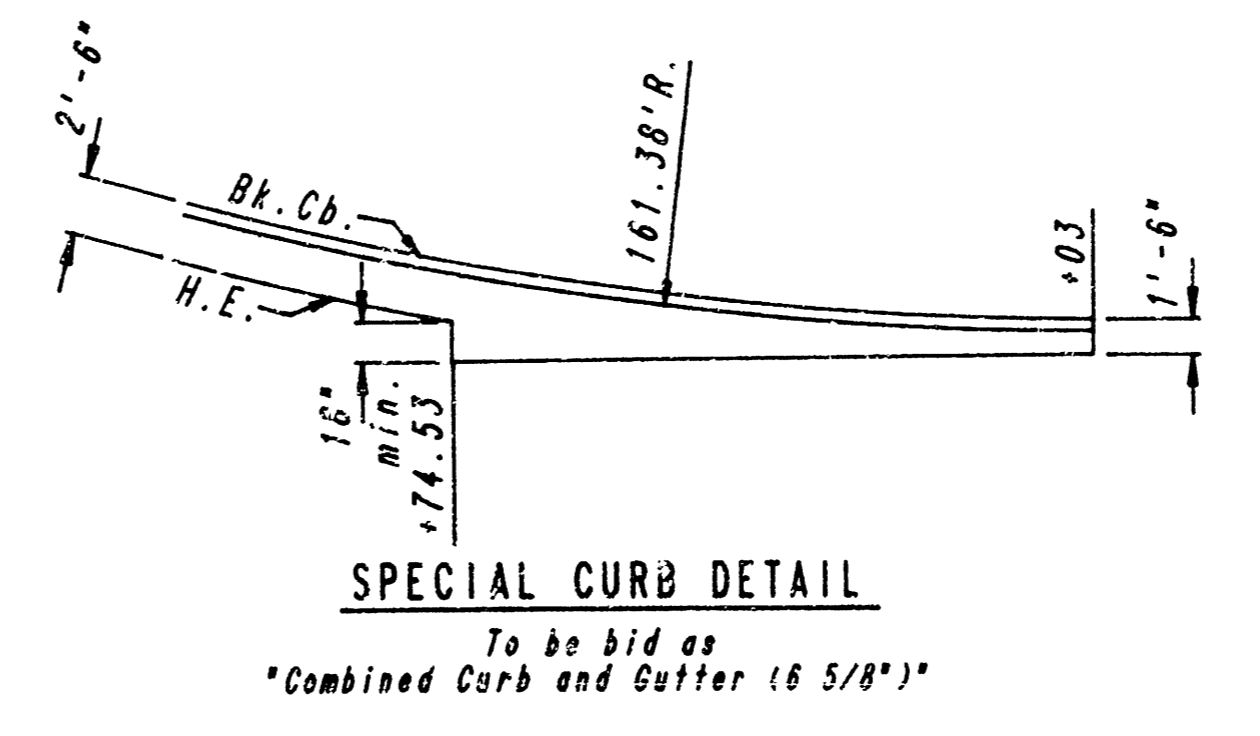


CURVE NO. 1 STAKING DATA						
CURVE DATA BASED ON RADIUS TO 8' BEHIND FACE OF CURB						
FACE CURB STATION	ARC LENGTH ALONG FACE CURB	ARC LENGTH ALONG 8' OFFSET	CHD LENGTH 8' OFF FC. OF CB.	DEFLECTION ANGLE	TOTAL DEFLECTION	REMARKS
9+22.50	27.43'	28.80'	28.80'	0°00'00"	0°00'00"	P.C.
9+50.53	27.43'	28.80'	28.80'	0°00'00"	0°00'00"	P.T.C.
9+83.18	13.05'	13.76'	13.05'	0°19'00"	7°13'12"	P.R.C.

Defl./ft. = 2.558055 min.

CURVE NO. 2 STAKING DATA						
CURVE DATA BASED ON RADIUS TO 8' BEHIND FACE OF CURB						
FACE CURB STATION	ARC LENGTH ALONG FACE CURB	ARC LENGTH ALONG 8' OFFSET	CHD LENGTH 8' OFF FC. OF CB.	DEFLECTION ANGLE	TOTAL DEFLECTION	REMARKS
8+53.18	16.82'	15.40'	15.40'	2°58'00"	0°58'00"	P.R.C.
9+00	26.84'	19.33'	19.33'	3°42'11"	0°51'18"	P.T.
10+03.86	3.00'	2.85'	2.85'	0°51'58"	7°13'12"	P.T.

Defl./ft. = 2.824901 min.



Curve Data
Curve No. 1 & 2
(Face of Curb)
A=14°28'34"
B=37°21'20"
R=161.38'
D=35°30'13"
L=20.45'
T=40.89'
E=1.29'

- * MATCH EXISTING
- / FACE OF CURB STATION
- # TRANSITION TOP OF CURB TO MATCH EXISTING
- ## CONSTRUCT STD. WHEELCHAIR RAMPS

CORPORATE LAKES

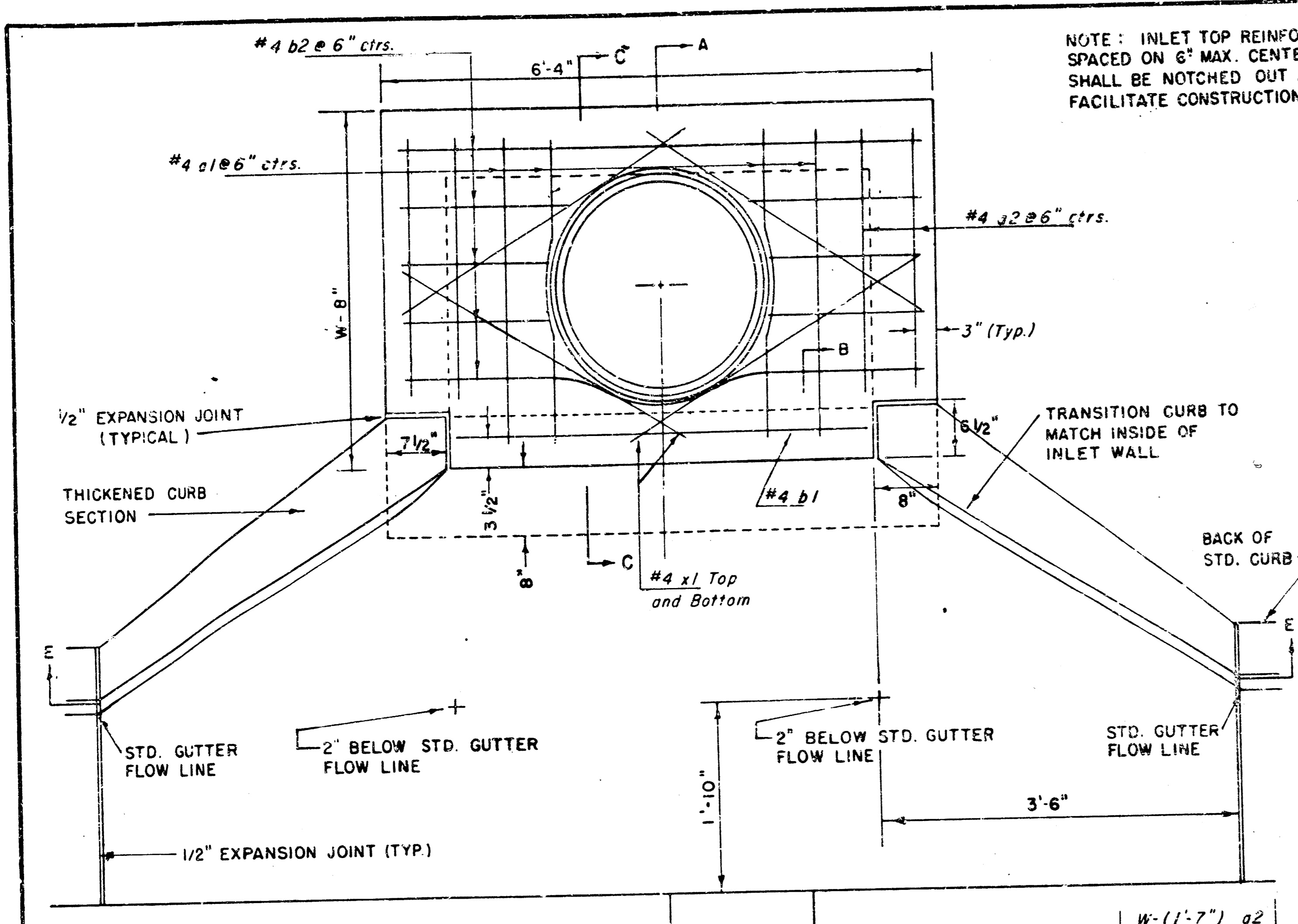
DECELERATION LANE

STA. 6+00.00 TO STA. 10+03.00

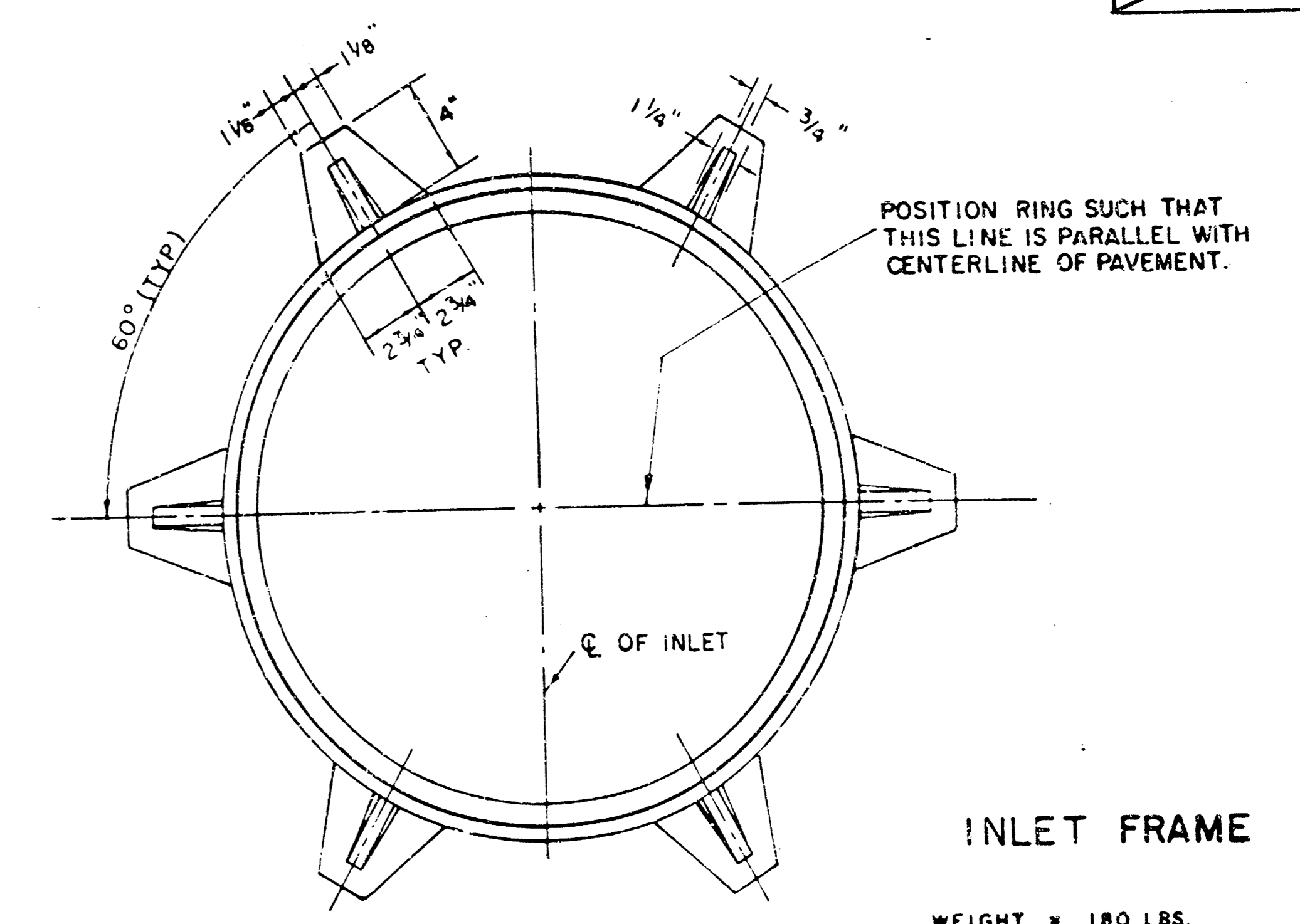
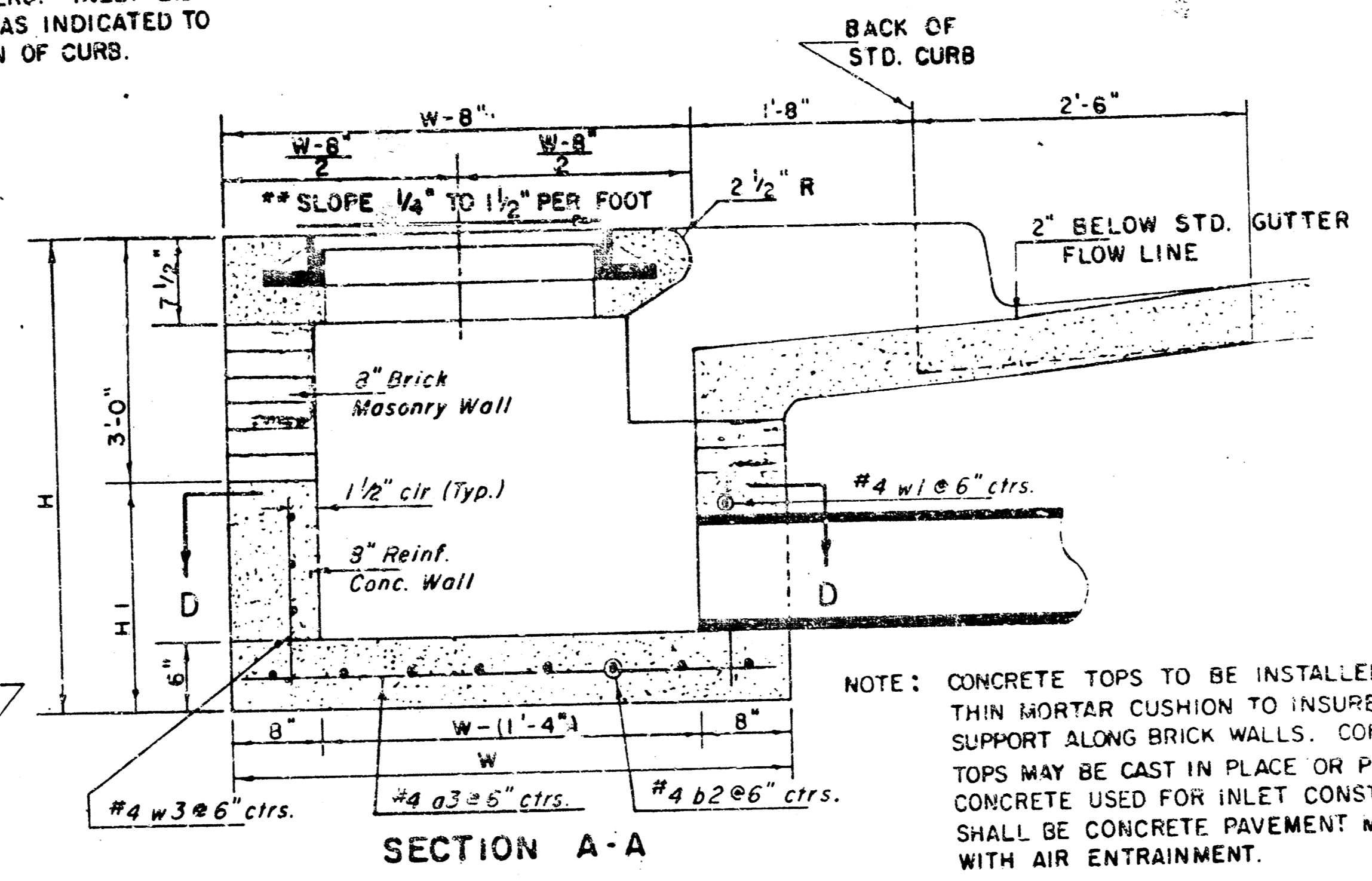
PROFESSIONAL ENGINEERING CONSULTANTS, P.A.
ENGINEERS
WICHITA, KANSAS

Designed by GSP, RDP	Checked by
Drawn by DEP	Date SEPT., 1988 Job No. 89277

FILMED FROM THE BEST AVAILABLE COPY



NOTE: INLET TOP REINFORCING SHALL BE SPACED ON 6" MAX. CENTERS. INLET LIDS SHALL BE NOTCHED OUT AS INDICATED TO FACILITATE CONSTRUCTION OF CURB.



NOTE: EXPANSION JOINT ONLY IN CURB AREA WITH CONC. PAVEMENT.

PLAN

NOTE: CONTRACTOR SHALL HAVE THE OPTION OF CONSTRUCTING 8" BRICK MASONRY WALLS BETWEEN THE CONCRETE INLET BASE AND TOP ON THIS INLET WHEN W = 6'-4" AND H = 7'-0" OR LESS.

ADDITIONAL CURB AND GUTTER CONSTRUCTION NECESSARY TO CONNECT SET-BACK INLET TO PAVEMENT WILL BE PAID FOR AT THE UNIT PRICE BID FOR EACH INLET HOOKUP.

INLET INVERT SHALL BE SHAPED WITH 8 SACK SAND MIX CONCRETE TO CREATE FLOW CHANNELS AND TO INCREASE HYDRAULIC EFFICIENCY SUCH THAT THE INLET WILL BE SELF CLEANING BETWEEN ALL INLET AND/OR OUTLET PIPES.

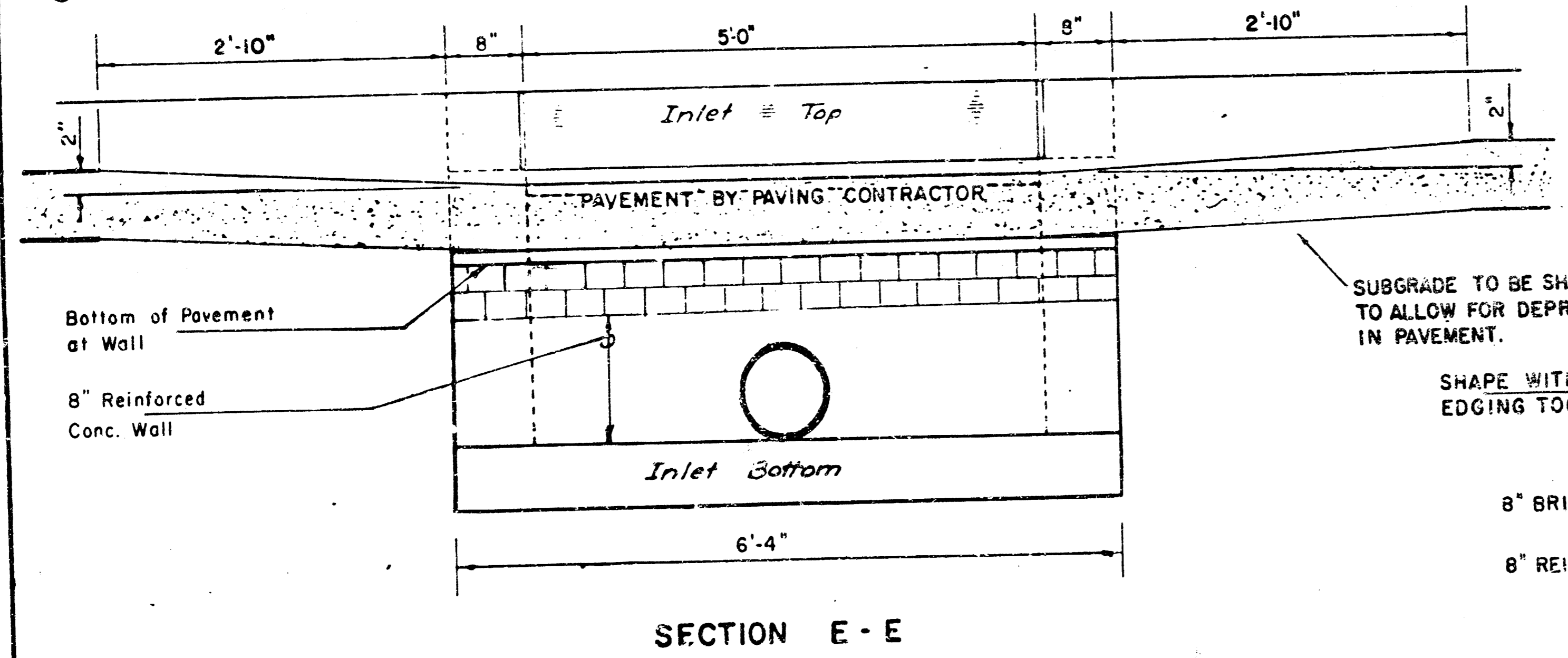
THE ENDS OF ALL PIPES INSTALLED IN INLETS SHALL BE CUT OFF FLUSH WITH THE INSIDE FACE OF THE INLET WALL.

**NOTE: Slope of Inlet Tops to match Sidewalk or Parking Slopes within Limits Indicated.

PRECAST SLAB AND FLOOR REINFORCING											
Mark	Size	W=4'-4"		W=5'-4"		W=6'-4"		W=7'-4"		W=8'-4"	
		No.	Length	No.	Length	No.	Length	No.	Length	No.	Length
a1	#4	6	6'-7"	6	8'-7"	6	10'-7"	6	12'-7"	6	14'-7"
a2	#4	4	6'-0"	4	8'-0"	4	10'-0"	4	12'-0"	4	14'-0"
a3	#4	13	4'-1"	13	5'-1"	13	6'-1"	13	7'-1"	13	8'-1"
b1	#4	1	4'-9"	1	4'-9"	1	4'-9"	1	4'-9"	1	4'-9"
b2	#4	23	6'-1"	29	6'-1"	35	6'-1"	41	6'-1"	47	6'-1"
z1	#4	8	3'-10"	8	4'-2"	8	4'-6"	8	4'-10"	8	5'-2"

WALL REINFORCING											
Mark	Size	W=4'-4"		W=5'-4"		W=6'-4"		W=7'-4"		W=8'-4"	
		No.	Length	No.	Length	No.	Length	No.	Length	No.	Length
w1	#4	0	6'-1"	0	6'-1"	0	6'-1"	0	6'-1"	0	6'-1"
w2	#4	0	4'-1"	0	5'-1"	0	6'-1"	0	7'-1"	0	8'-1"
w3	#4	32	2	36	2	40	2	44	2	48	2

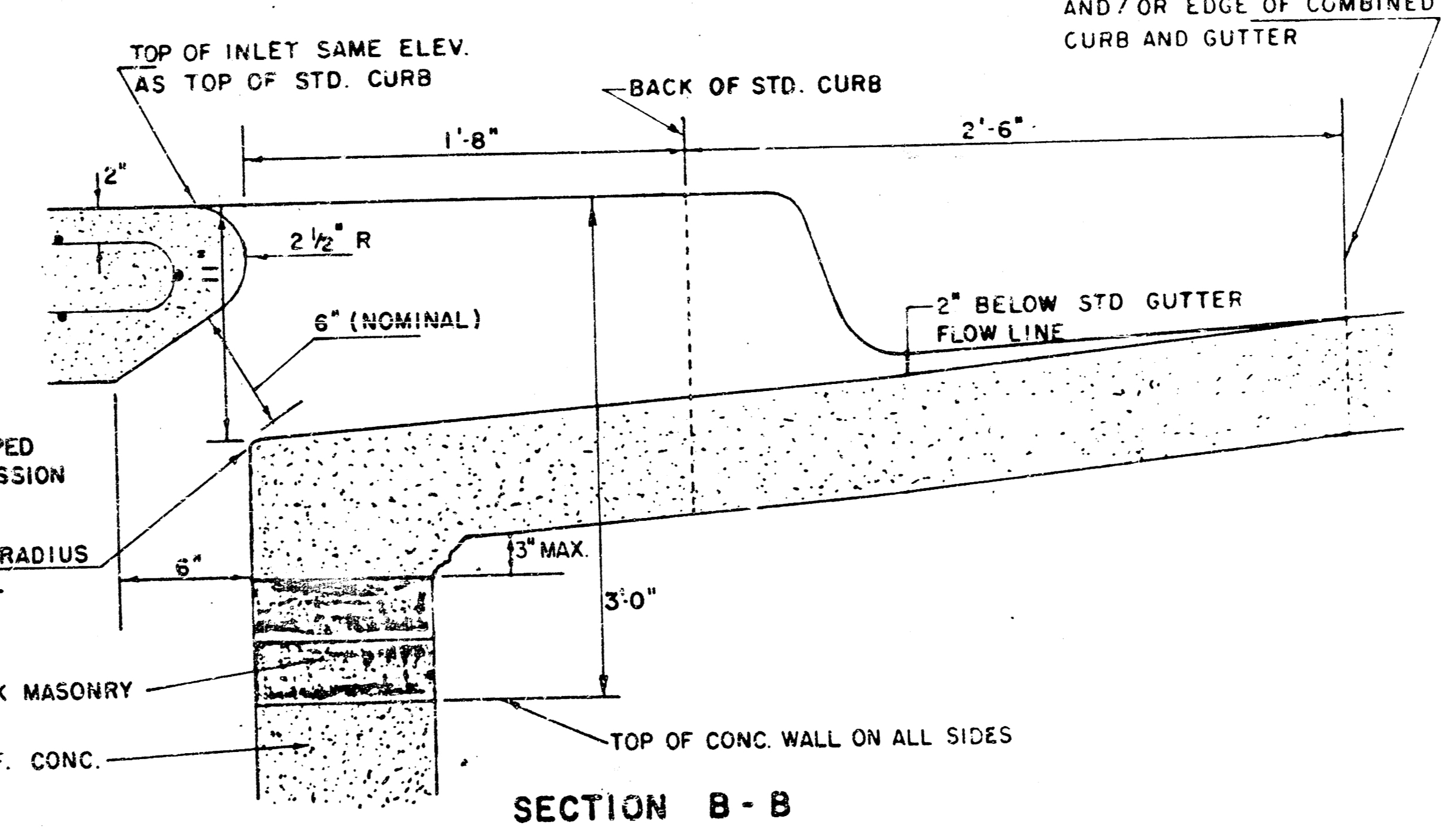
* Field bend or cut reinforcing as required for clearance.
 ① 4(HI-12"): (HI-12") Round down to nearest 0.5"
 ② HI-3"



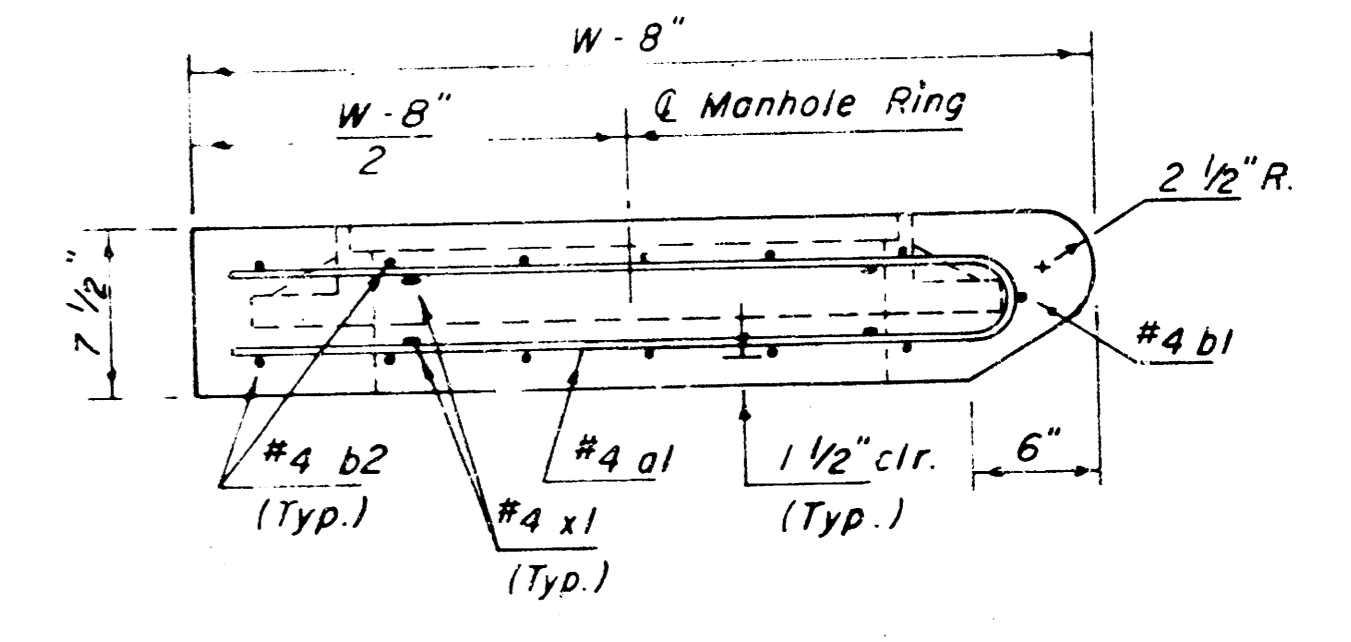
SECTION E-E

STANDARD CURB INLET PRECAST TOPS			
W	PRE-CAST TOP SIZE	PIPE SIZE	CU. YD. CONC.
4' 4"	3'8" x 6'4" x 7 1/2"	21" Ø SMALLER	0.38 ±
5' 4"	4'8" x 6'4" x 7 1/2"	24" Ø 30"	0.51 ±
6' 4"	5'8" x 6'4" x 7 1/2"	36" Ø 42"	0.64 ±
7' 4"	6'8" x 6'4" x 7 1/2"	48" Ø 54"	0.77 ±
8' 4"	7'8" x 6'4" x 7 1/2"	60" Ø 66"	0.90 ±

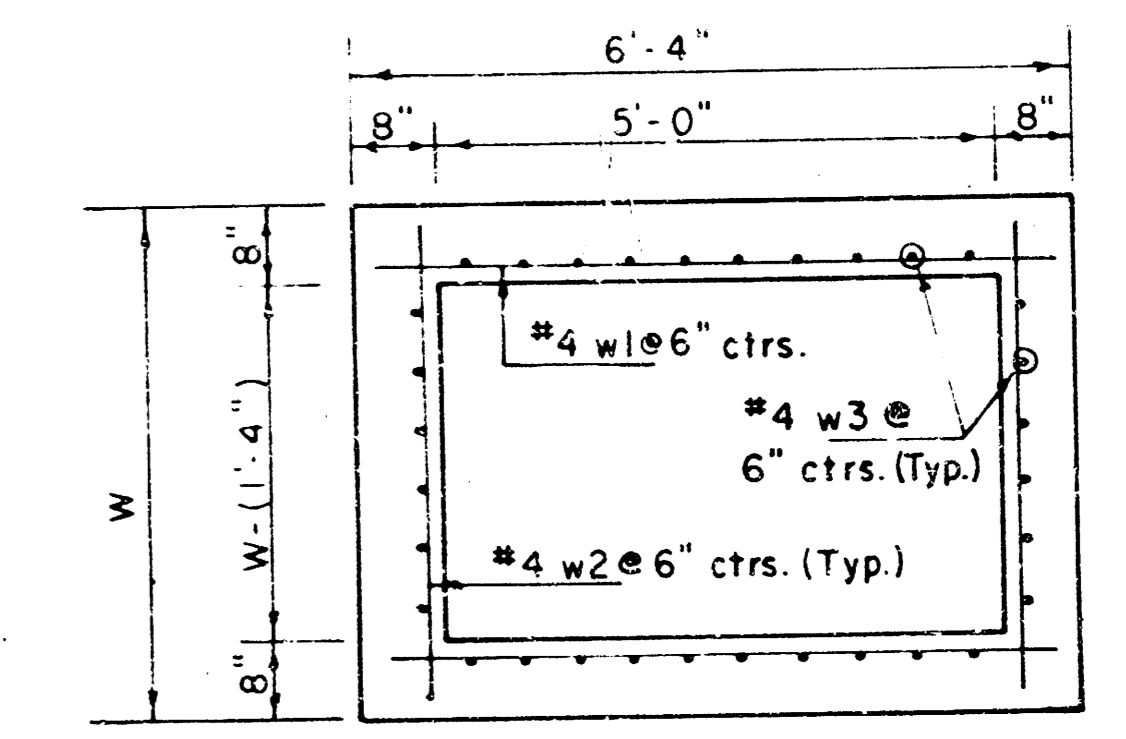
BENDING DIAGRAM



SECTION B-B



SECTION C-C



SECTION D-D

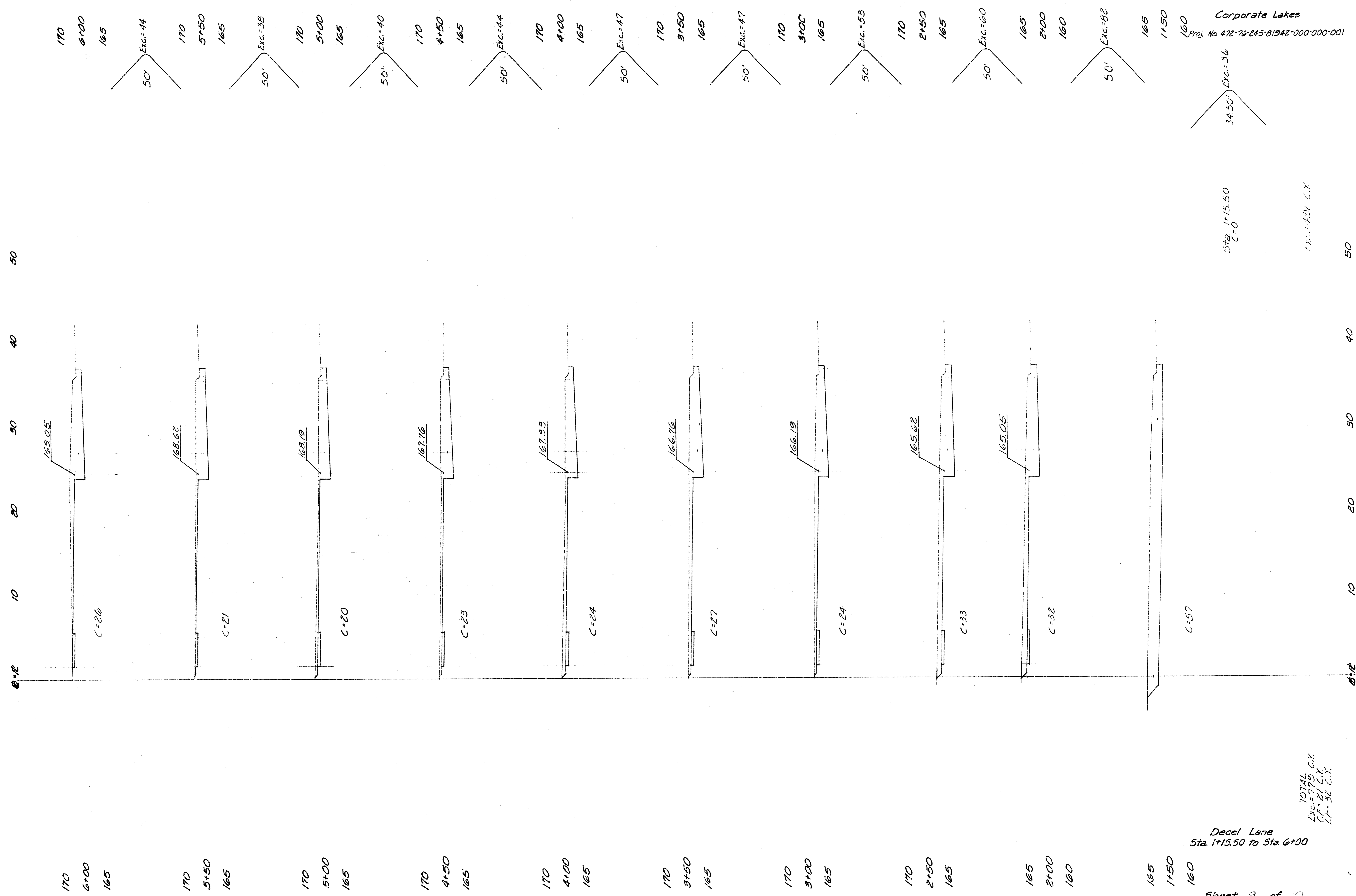
REVISED 11-30-1988
 REVISED 12-21-1984
 Revised 2-16-1989

DETAIL STANDARD TYPE IA CURB INLET
 CITY OF WICHITA, KANSAS
 INLET OPENING = 6" x 5'0"

JUNE 1984

C.O.W. Proj. No. 472 76 245 81942 000 000 001

FILMED FROM THE BEST AVAILABLE COPY....



Corporate Lakes
 Proj. No. 472-76-245-B1942-000-000-001

Sta. 1+15.50
 C=0
 Exc.=36

Decel Lane
 Sta. 1+15.50 to Sta. 6+00

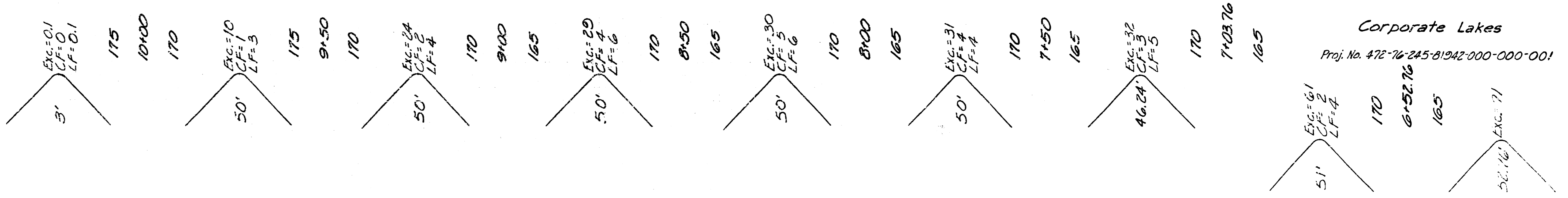
TOTAL
 Exc.=779 C.Y.
 C.F.=21 C.Y.
 L.F.=32 C.Y.

Sheet 9 of 0

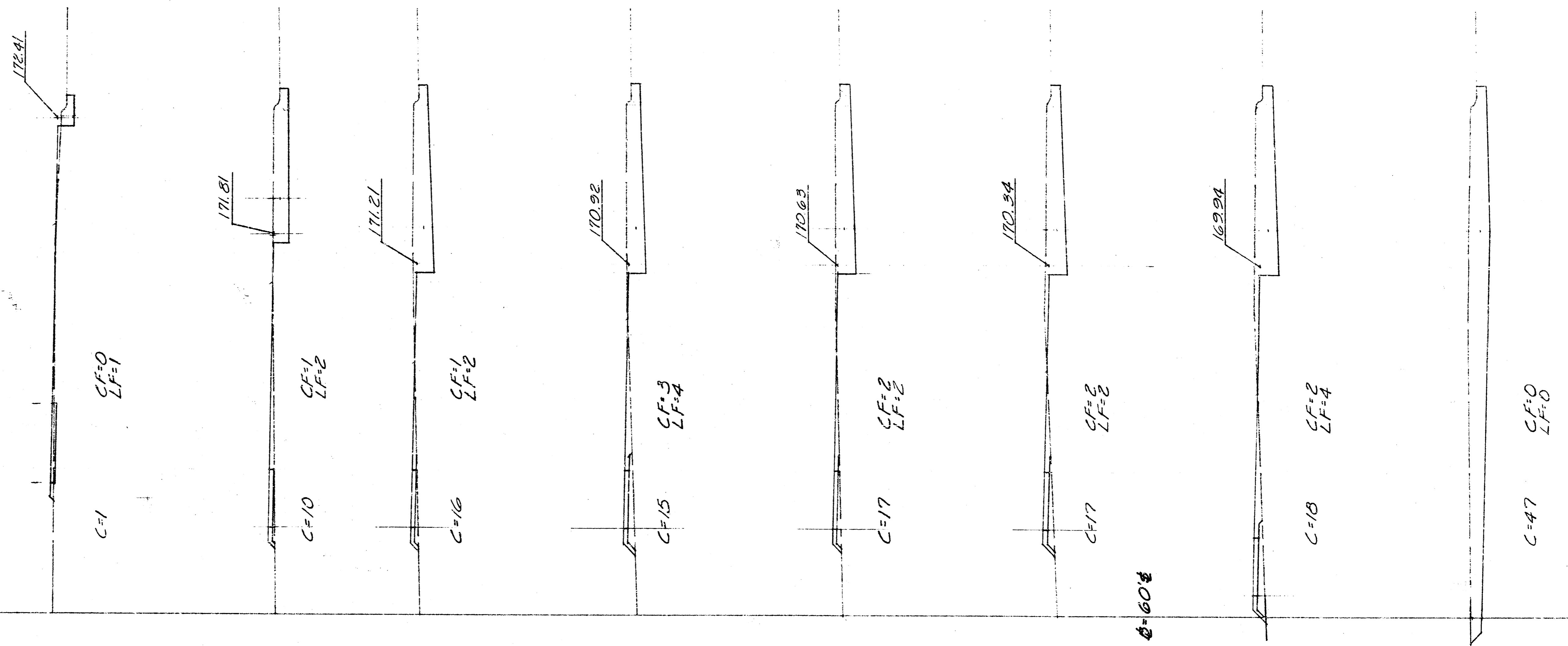
FILMED FROM THE BEST AVAILABLE COPY.....

60' 50' 40' 30' 20' 10'

Sta. 10+03
CF=0
LF=0



Corporate Lakes
Proj. No. 472-74-245-81942-000-000-001



175 10+00 170
 175 9+50 170
 170 9+00 165
 170 8+50 165
 170 8+00 165
 170 7+50 165
 170 7+03.76 165
 170 6+52.76 165

Decel Lane
Sta. 6+52.76 to Sta. 10+03

Sheet 10 of 10

FILMED FROM THE BEST AVAILABLE COPY

50' 50' 40' 30' 20' 10'