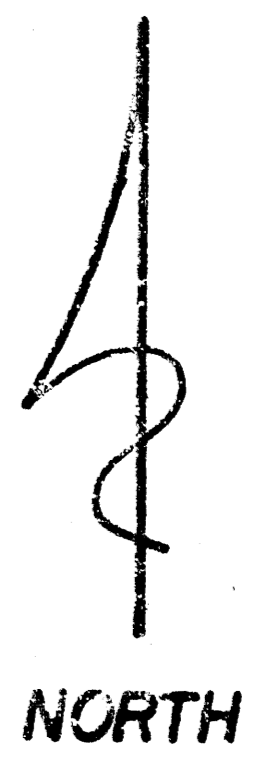
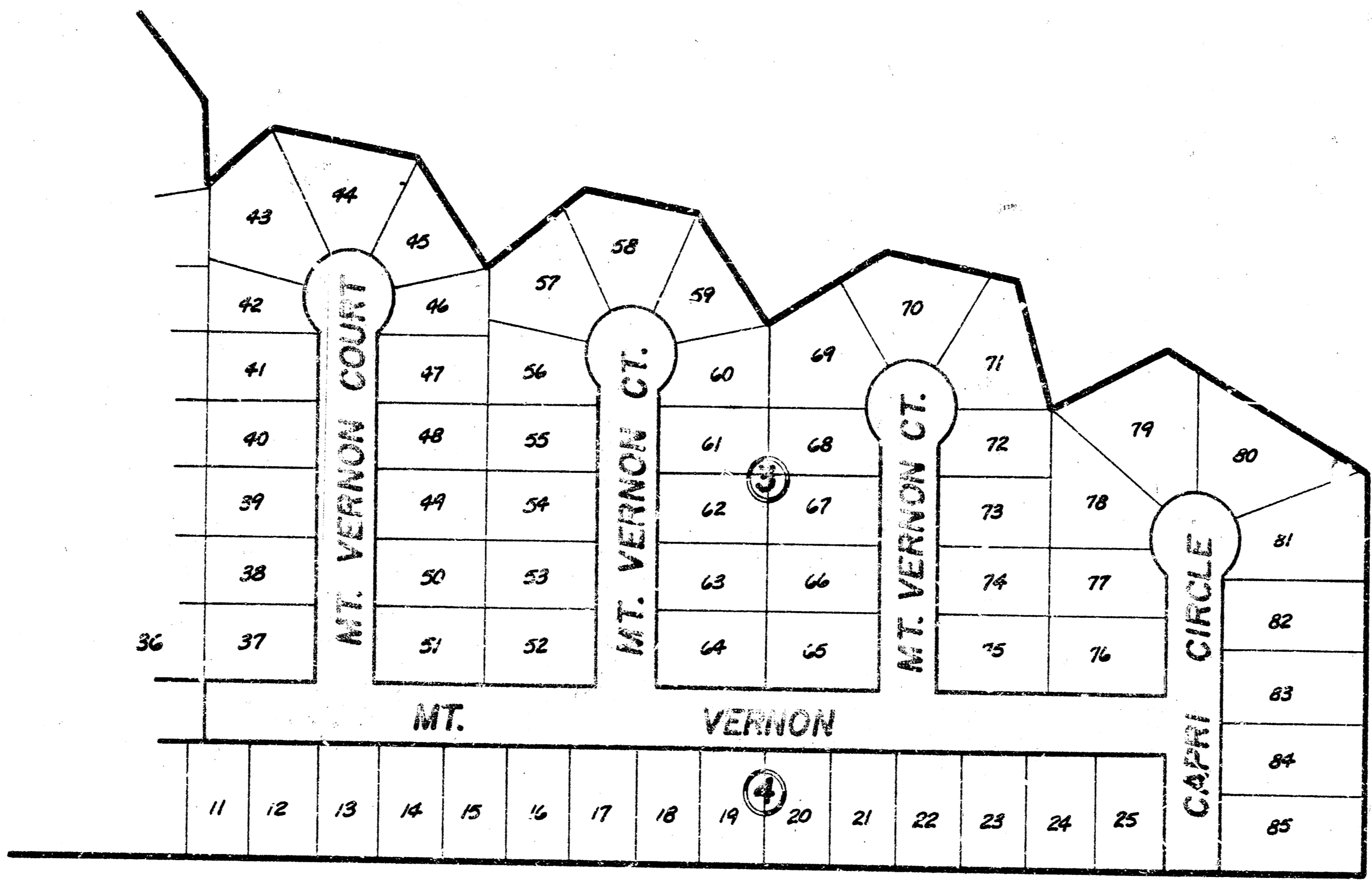
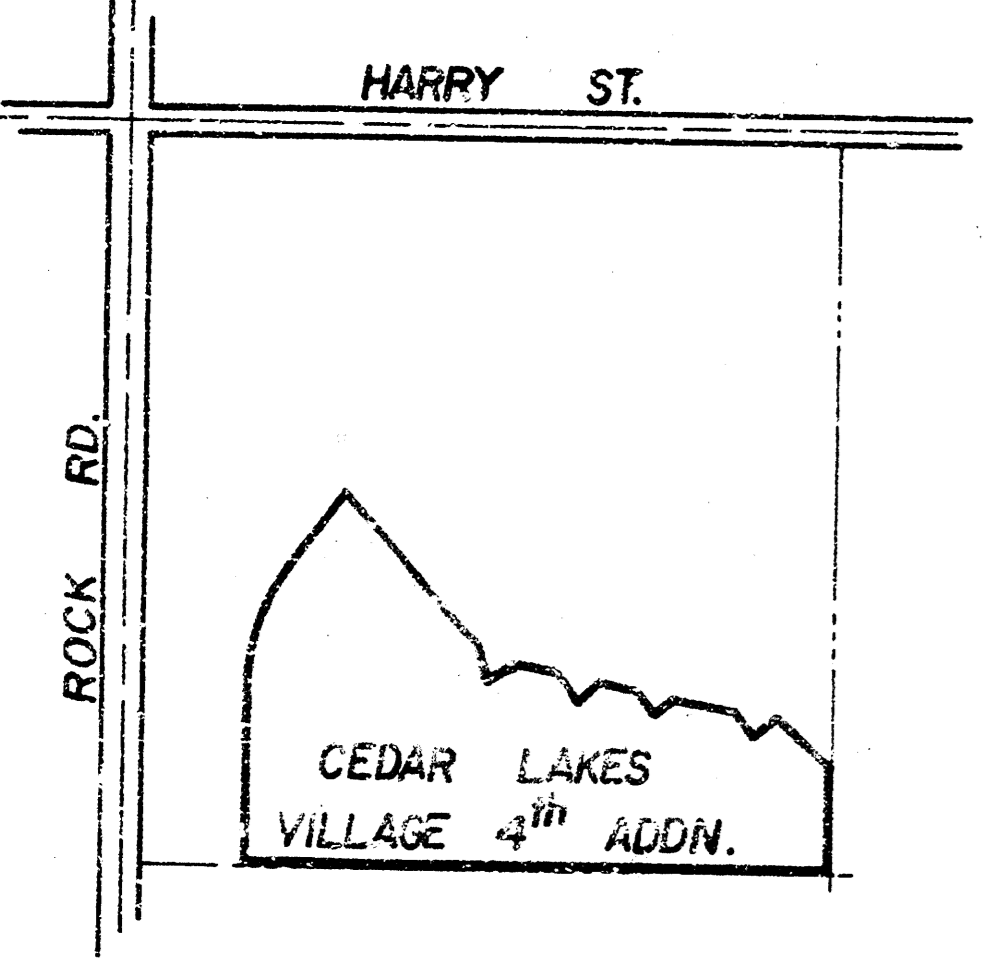


CEDAR LAKES VILLAGE 4th ADDN.

MT. VERNON
 E.L. lot 36, Blk. 3, Cedar Lakes Village 4th Addn. to the W.L. Capri Cir.
MT. VERNON COURT (lots 37-51, Blk. 3, Cedar Lakes Village 4th Addn.)
 N.L. Mt. Vernon to & incl. Cul-de-Sac
MT. VERNON COURT (lots 52-54, Blk. 3, Cedar Lakes Village 4th Addn.)
 N.L. Mt. Vernon to & incl. Cul-de-Sac
MT. VERNON COURT (lots 65-75, Blk. 3, Cedar Lakes Village 4th Addn.)
 N.L. Mt. Vernon to & incl. Cul-de-Sac
CAPRI CIRCLE
 S.L. Cedar Lakes Village 4th Addn. to & incl. Cul-de-Sac



CITY of WICHITA, KANSAS
 R.W. Linn ——— City Engineer
 Proj. No. DAKS 574132



Handwritten markings: "D E" and "E D" with arrows pointing to the right.

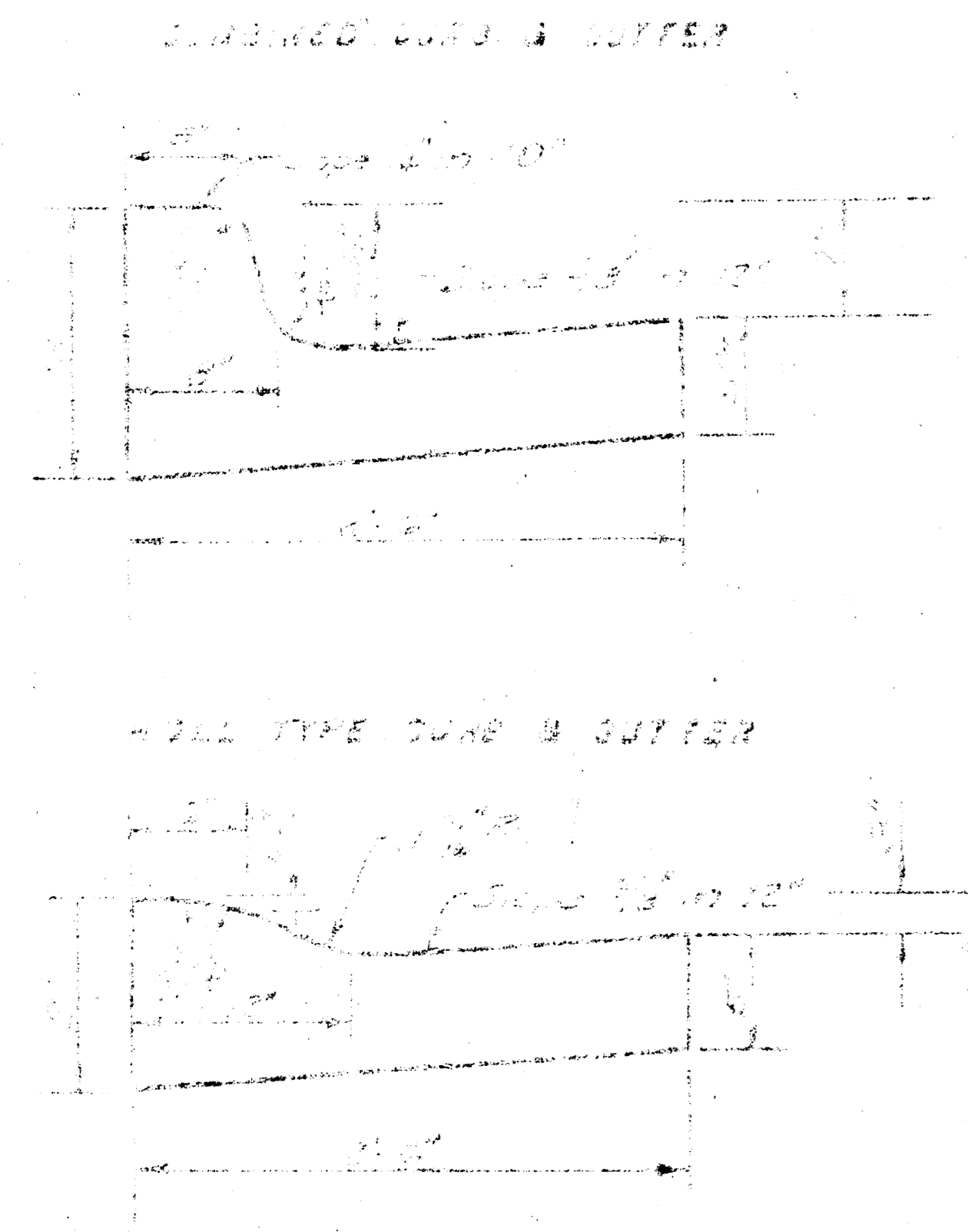
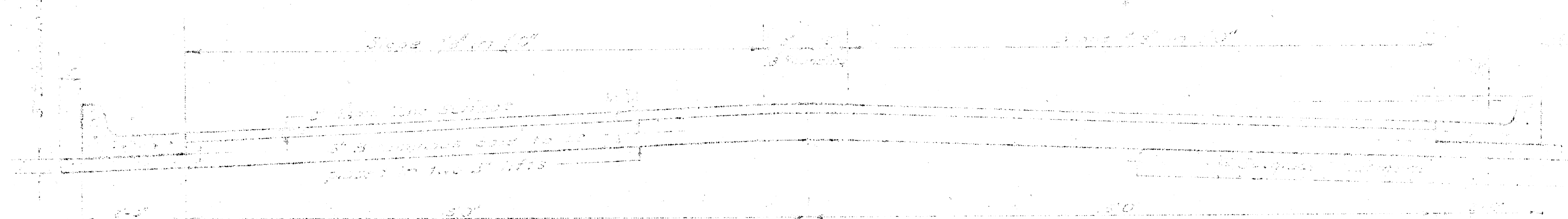
**Streets in
Cedar Lakes Village 4th Addition**

MT. VERNON

- E.L. lot 36, Blk. 3, Cedar Lakes Village 4th Addn. to the W.L. Capri Cir.
- MT. VERNON COURT** (lots 37-51, Blk 3, Cedar Lakes Village 4th Addn.)
N.L. Mt. Vernon to & Incl. Cul-de-Sac
- MT. VERNON COURT** (lots 52-64, Blk. 3, Cedar Lakes Village 4th Addn.)
N.L. Mt. Vernon to & Incl. Cul-de-Sac
- MT. VERNON COURT** (lots 65-75, Blk. 3, Cedar Lakes Village 4th Addn.)
N.L. Mt. Vernon to & Incl. Cul-de-Sac

CAPRI CIRCLE

S.L. Cedar Lakes Village 4th Addn. to & Incl. Cul-de-Sac



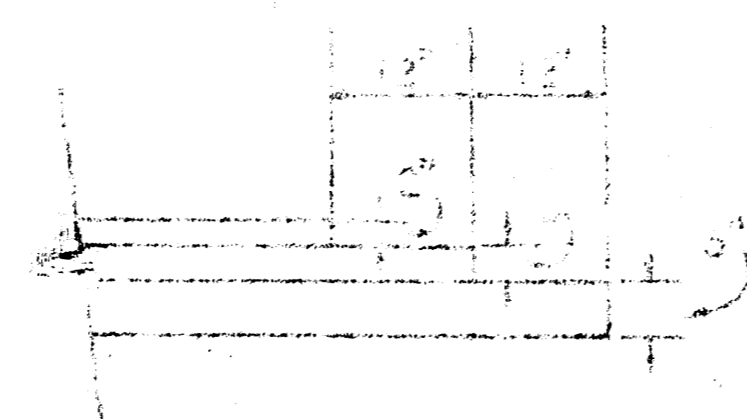
TYPICAL SECTION

3.5' ASPHALTIC CONCRETE PAVEMENT WITH BITUMINOUS BASE

A 1.5" COAT OF ENULSIFIED ASPHALT (35-111) SHALL BE APPLIED AT AN APPROXIMATE RATE 0.95 GALLONS PER SQ YD BETWEEN LIFTS OF ASPHALTIC MATERIALS WHEN ORDERED BY THE ENGINEER. THIS COAT WILL NOT BE PAID FOR DIRECTLY AND SHALL BE CONSIDERED AS SUBSIDIARY TO PRICE BID FOR ASPHALTIC PAVEMENT.

BITUMINOUS BASE AND ASPHALTIC CONCRETE WEARING SURFACE SHALL BE PLACED WITH A LAYDOWN MACHINE HAVING AUTOMATIC ELECTRONIC CONTROLS FOR CROWN AND GRADE. CONSTRUCTION JOINTS IN EACH LIFT SHALL BE STAGGERED A MINIMUM DISTANCE OF 10' WITH JOINTS IN RECEIVING LIFTS AND PLACED SUCH THAT A JOINT WILL BE CONSTRUCTED ON THE CENTERLINE IN THE TOP LIFT.

DETAIL OF TRANSVERSE CONSTRUCTION JOINTS

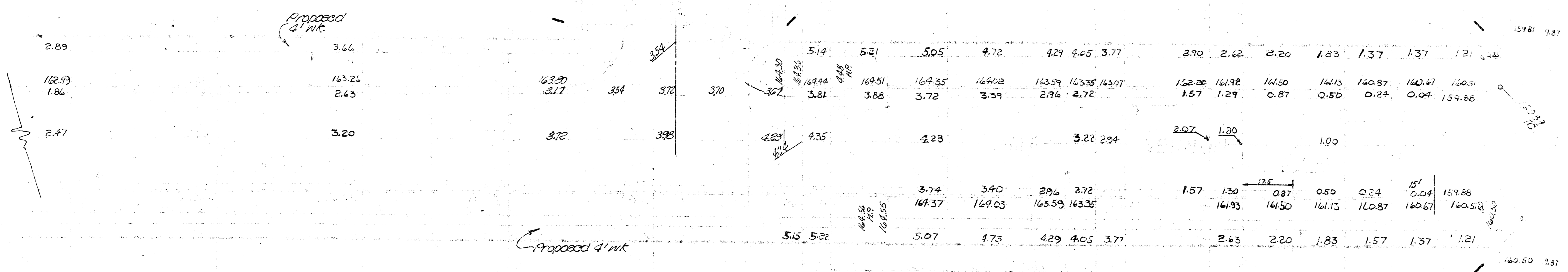


TRANSVERSE CONSTRUCTION JOINTS SHALL BE CONSTRUCTED IN FLEXIBLE BASE PAVEMENT AT LOCATIONS WHERE PAVEMENT TEMPORARILY ENDS TO FACILITATE FUTURE PAVEMENT CONSTRUCTION AS SHOWN BY DETAIL. THE COST OF CONSTRUCTING THE TRANSVERSE CONSTRUCTION JOINTS SHALL NOT BE MEASURED OR PAID FOR DIRECTLY BUT SHALL BE INCLUDED IN THE BID PRICE FOR SQUARE YARDS OF ASPHALTIC CONCRETE PAVEMENT.

CITY OF WICHITA, KANSAS
DEPARTMENT OF PUBLIC WORKS AND UTILITIES
DIVISION
S. W. LEM
DATE _____ FILE NO. DAKS574132

Proposed 4' width of pavement on east side of Mill Street Corridor for lots 87, 91, 92, 93, 94, 95, 96, 97, 98, 99, 100, 101, 102, 103, 104, 105, 106, 107, 108, 109, 110, 111, 112, 113, 114, 115, 116, 117, 118, 119, 120, 121, 122, 123, 124, 125, 126, 127, 128, 129, 130, 131, 132, 133, 134, 135, 136, 137, 138, 139, 140, 141, 142, 143, 144, 145, 146, 147, 148, 149, 150, 151, 152, 153, 154, 155, 156, 157, 158, 159, 160, 161, 162, 163, 164, 165, 166, 167, 168, 169, 170, 171, 172, 173, 174, 175, 176, 177, 178, 179, 180, 181, 182, 183, 184, 185, 186, 187, 188, 189, 190, 191, 192, 193, 194, 195, 196, 197, 198, 199, 200, 201, 202, 203, 204, 205, 206, 207, 208, 209, 210, 211, 212, 213, 214, 215, 216, 217, 218, 219, 220, 221, 222, 223, 224, 225, 226, 227, 228, 229, 230, 231, 232, 233, 234, 235, 236, 237, 238, 239, 240, 241, 242, 243, 244, 245, 246, 247, 248, 249, 250, 251, 252, 253, 254, 255, 256, 257, 258, 259, 260, 261, 262, 263, 264, 265, 266, 267, 268, 269, 270, 271, 272, 273, 274, 275, 276, 277, 278, 279, 280, 281, 282, 283, 284, 285, 286, 287, 288, 289, 290, 291, 292, 293, 294, 295, 296, 297, 298, 299, 300, 301, 302, 303, 304, 305, 306, 307, 308, 309, 310, 311, 312, 313, 314, 315, 316, 317, 318, 319, 320, 321, 322, 323, 324, 325, 326, 327, 328, 329, 330, 331, 332, 333, 334, 335, 336, 337, 338, 339, 340, 341, 342, 343, 344, 345, 346, 347, 348, 349, 350, 351, 352, 353, 354, 355, 356, 357, 358, 359, 360, 361, 362, 363, 364, 365, 366, 367, 368, 369, 370, 371, 372, 373, 374, 375, 376, 377, 378, 379, 380, 381, 382, 383, 384, 385, 386, 387, 388, 389, 390, 391, 392, 393, 394, 395, 396, 397, 398, 399, 400, 401, 402, 403, 404, 405, 406, 407, 408, 409, 410, 411, 412, 413, 414, 415, 416, 417, 418, 419, 420, 421, 422, 423, 424, 425, 426, 427, 428, 429, 430, 431, 432, 433, 434, 435, 436, 437, 438, 439, 440, 441, 442, 443, 444, 445, 446, 447, 448, 449, 450, 451, 452, 453, 454, 455, 456, 457, 458, 459, 460, 461, 462, 463, 464, 465, 466, 467, 468, 469, 470, 471, 472, 473, 474, 475, 476, 477, 478, 479, 480, 481, 482, 483, 484, 485, 486, 487, 488, 489, 490, 491, 492, 493, 494, 495, 496, 497, 498, 499, 500, 501, 502, 503, 504, 505, 506, 507, 508, 509, 510, 511, 512, 513, 514, 515, 516, 517, 518, 519, 520, 521, 522, 523, 524, 525, 526, 527, 528, 529, 530, 531, 532, 533, 534, 535, 536, 537, 538, 539, 540, 541, 542, 543, 544, 545, 546, 547, 548, 549, 550, 551, 552, 553, 554, 555, 556, 557, 558, 559, 560, 561, 562, 563, 564, 565, 566, 567, 568, 569, 570, 571, 572, 573, 574, 575, 576, 577, 578, 579, 580, 581, 582, 583, 584, 585, 586, 587, 588, 589, 590, 591, 592, 593, 594, 595, 596, 597, 598, 599, 600, 601, 602, 603, 604, 605, 606, 607, 608, 609, 610, 611, 612, 613, 614, 615, 616, 617, 618, 619, 620, 621, 622, 623, 624, 625, 626, 627, 628, 629, 630, 631, 632, 633, 634, 635, 636, 637, 638, 639, 640, 641, 642, 643, 644, 645, 646, 647, 648, 649, 650, 651, 652, 653, 654, 655, 656, 657, 658, 659, 660, 661, 662, 663, 664, 665, 666, 667, 668, 669, 670, 671, 672, 673, 674, 675, 676, 677, 678, 679, 680, 681, 682, 683, 684, 685, 686, 687, 688, 689, 690, 691, 692, 693, 694, 695, 696, 697, 698, 699, 700, 701, 702, 703, 704, 705, 706, 707, 708, 709, 710, 711, 712, 713, 714, 715, 716, 717, 718, 719, 720, 721, 722, 723, 724, 725, 726, 727, 728, 729, 730, 731, 732, 733, 734, 735, 736, 737, 738, 739, 740, 741, 742, 743, 744, 745, 746, 747, 748, 749, 750, 751, 752, 753, 754, 755, 756, 757, 758, 759, 760, 761, 762, 763, 764, 765, 766, 767, 768, 769, 770, 771, 772, 773, 774, 775, 776, 777, 778, 779, 780, 781, 782, 783, 784, 785, 786, 787, 788, 789, 790, 791, 792, 793, 794, 795, 796, 797, 798, 799, 800, 801, 802, 803, 804, 805, 806, 807, 808, 809, 810, 811, 812, 813, 814, 815, 816, 817, 818, 819, 820, 821, 822, 823, 824, 825, 826, 827, 828, 829, 830, 831, 832, 833, 834, 835, 836, 837, 838, 839, 840, 841, 842, 843, 844, 845, 846, 847, 848, 849, 850, 851, 852, 853, 854, 855, 856, 857, 858, 859, 860, 861, 862, 863, 864, 865, 866, 867, 868, 869, 870, 871, 872, 873, 874, 875, 876, 877, 878, 879, 880, 881, 882, 883, 884, 885, 886, 887, 888, 889, 890, 891, 892, 893, 894, 895, 896, 897, 898, 899, 900, 901, 902, 903, 904, 905, 906, 907, 908, 909, 910, 911, 912, 913, 914, 915, 916, 917, 918, 919, 920, 921, 922, 923, 924, 925, 926, 927, 928, 929, 930, 931, 932, 933, 934, 935, 936, 937, 938, 939, 940, 941, 942, 943, 944, 945, 946, 947, 948, 949, 950, 951, 952, 953, 954, 955, 956, 957, 958, 959, 960, 961, 962, 963, 964, 965, 966, 967, 968, 969, 970, 971, 972, 973, 974, 975, 976, 977, 978, 979, 980, 981, 982, 983, 984, 985, 986, 987, 988, 989, 990, 991, 992, 993, 994, 995, 996, 997, 998, 999, 1000.

-0.857%



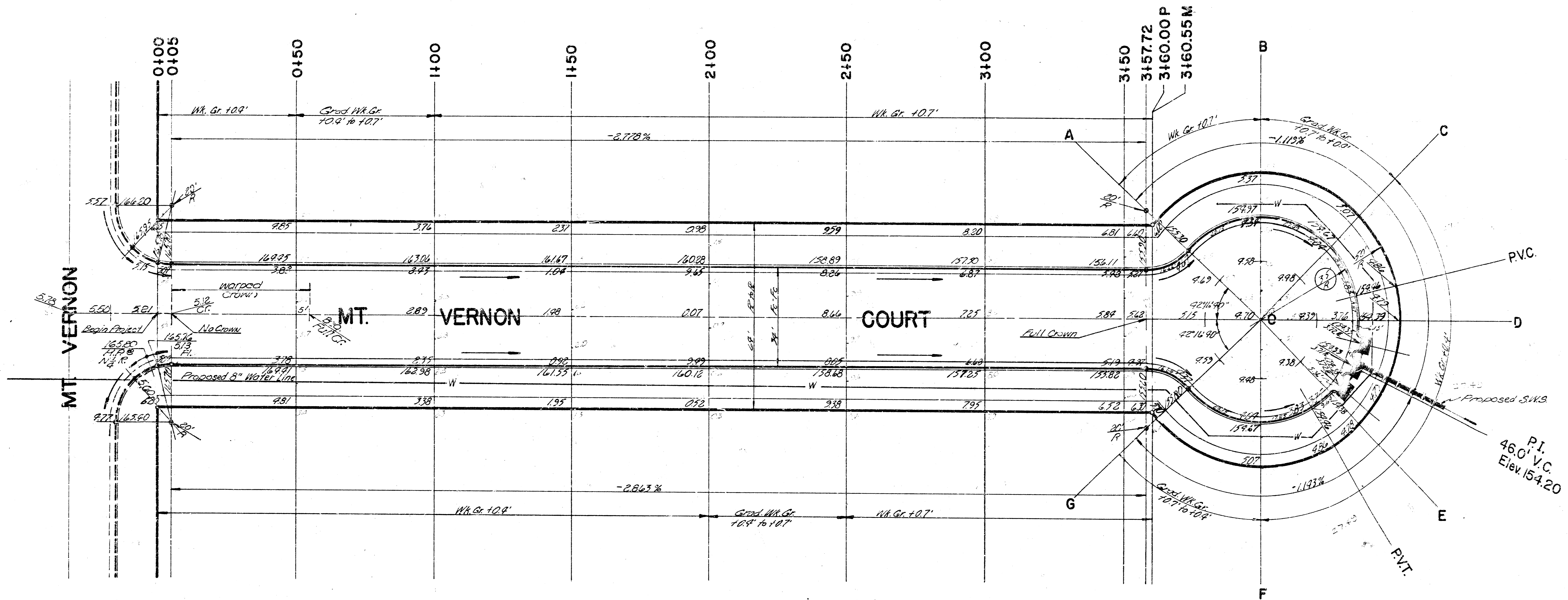
-0.857%

B.M. 173.72 RR Spike in north face of power pole 380' West of west line of Mt. Vernon Court for lots 37-51, at south line of Cedar Lakes Village 4th Addition.

B.M. 159.16 RR Spike in north face of power pole at White Oak Drive and 6' South of south line of Cedar Lakes Village 4th Addition.

℄ is West ℄ of Mt. Vernon Court for lots 37-51, Cedar Lakes Village 4th Addition

Scale: 1" = 20'



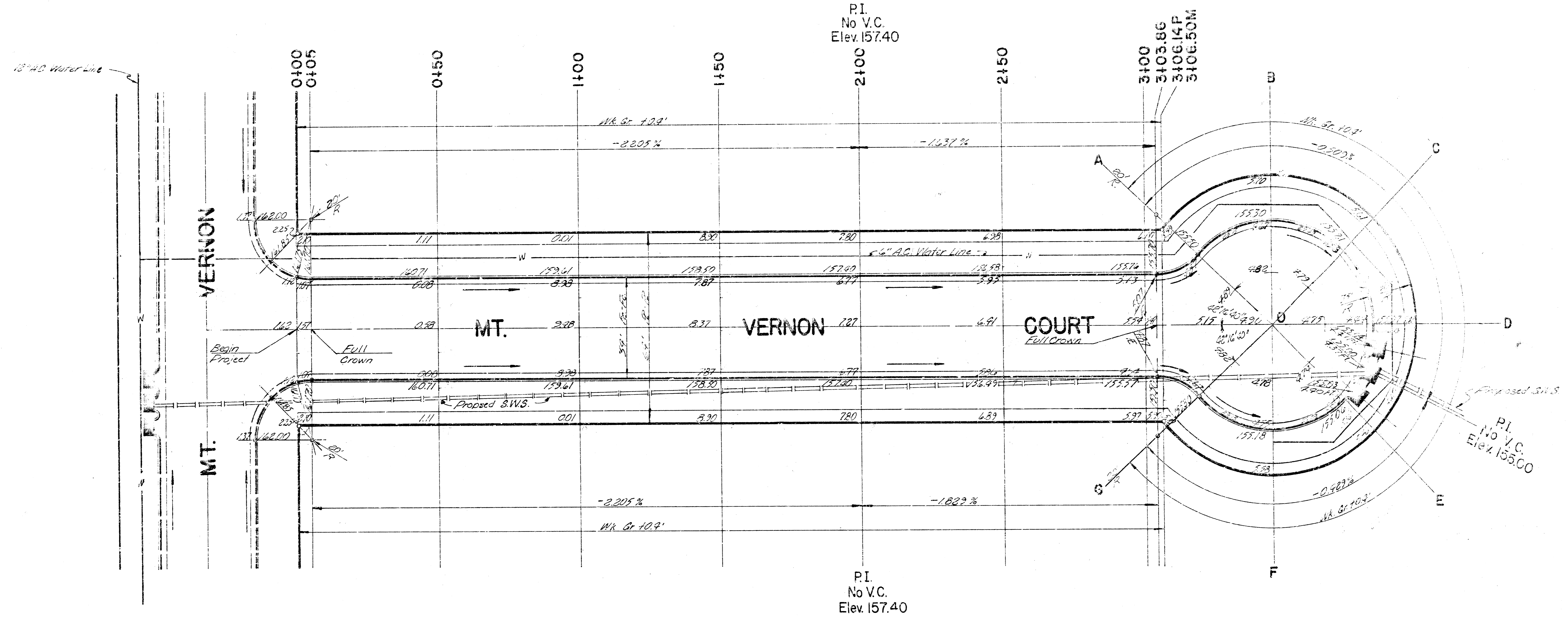
MT. VERNON COURT
 N.L. Mt. Vernon to and including Cul-de-Sac
 (For lots 37-51, Block 3, Cedar Lakes Village 4th Addition)
 DAKS574132

B.M. 173.72 RR Spike in north face of power pole 380' West of west line of Mt. Vernon Court for lots 37-51, at south line of Cedar Lakes Village 4th Addition.

B.M. 159.16 RR Spike in north face of power pole at White Oak Drive and 6' South of south line of Cedar Lakes Village 4th Addition.

is West of Mt. Vernon Court for lots 52-64, Cedar Lakes Village 4th Addition.

Scale: 1" = 20'



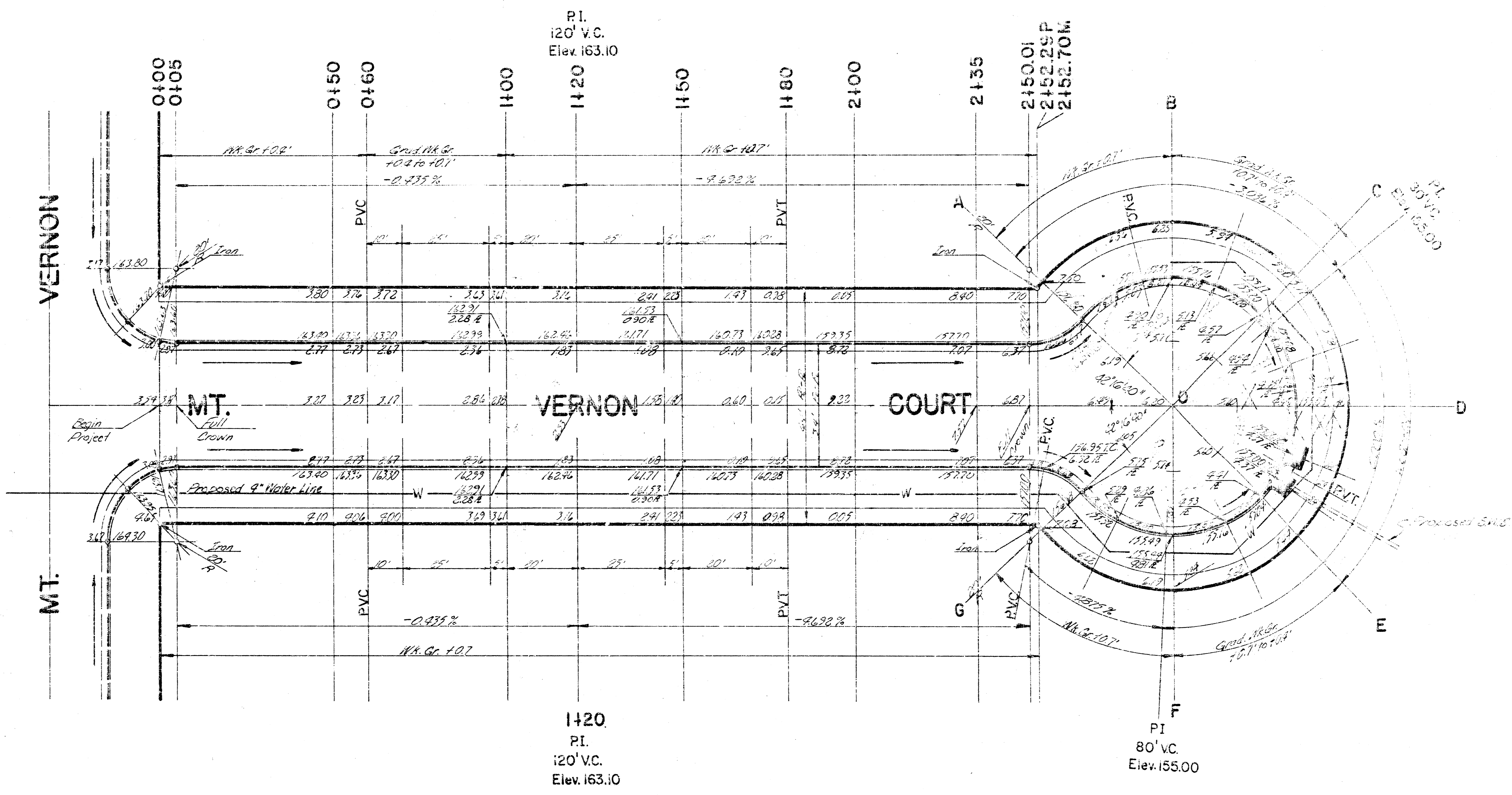
MT. VERNON COURT
 N.L. MT. Vernon to and including Court
 (For lots 52-64, Block 3, Cedar Lakes Village 4th Addition)
 DAKS574132

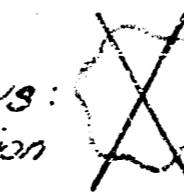
B.M. 173.72 RR Spike in north face of power pole 380' West of west line of Mt. Vernon Court for lots 37-51, at south line of Cedar Lakes Village 4th Addition.

B.M. 159.16 RR Spike in north face of power pole at White Oak Drive and 6' South of south line of Cedar Lakes Village 4th Addition.

B is West R of Mt. Vernon Court for lots 65-75, Cedar Lakes Village 4th Addition.

Scale: 1" = 20'

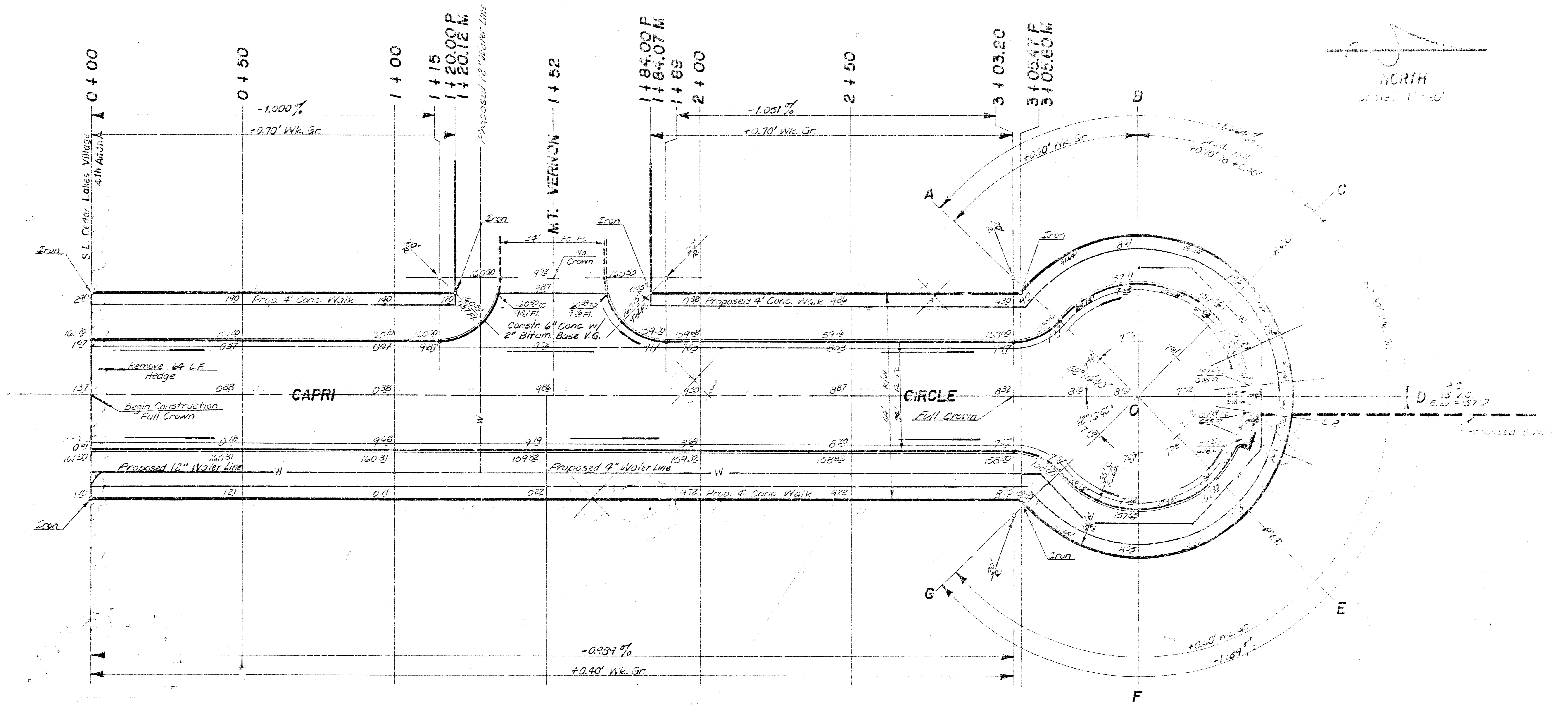


Trees to be removed are marked thus:  except that any tree which in the opinion of the field engineer can be saved shall be spared.

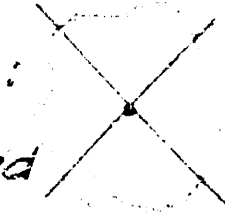
MT. VERNON COURT
 N.L. MT. Vernon to and including Cul-de-sac
 (For lots 65-75, Block 3, Cedar Lakes Village 4th Addition)
 DAKS 574132 7 of 7

B.M. = 164.60 R.R. Spk. N.E. Side Small Box Elder Tree 12' W. of W.L. Capri Cir.
 & 5' N. of S.L. Cedar Lakes Village 4th Adn.

Baseline is W. L. Capri Cir.



SUBGRADE
 TYPE OF SUBGRADE TO BE USED SHALL BE DETERMINED BY THE CONTRACTOR. THE CONTRACTOR SHALL BE RESPONSIBLE FOR OBTAINING ALL NECESSARY PERMITS AND APPROVALS FROM THE APPROPRIATE AGENCIES.

Note: Trees to be Removed are Marked Thus:  Except that any Tree Which, in the opinion of the Engineer, Can be Saved Shall be Spared.

NOTE TO NEW ENGINEER & CONTRACTOR
 Circle paving and clear right-of-way for proposed sidewalk. Compare full sidewalk area to be constructed by "NOTES".

CAPRI CIRCLE
 S.L. Cedar Lakes Village Fourth Adn.
 to & incl. Cul-De-Sac
 DAKS574132