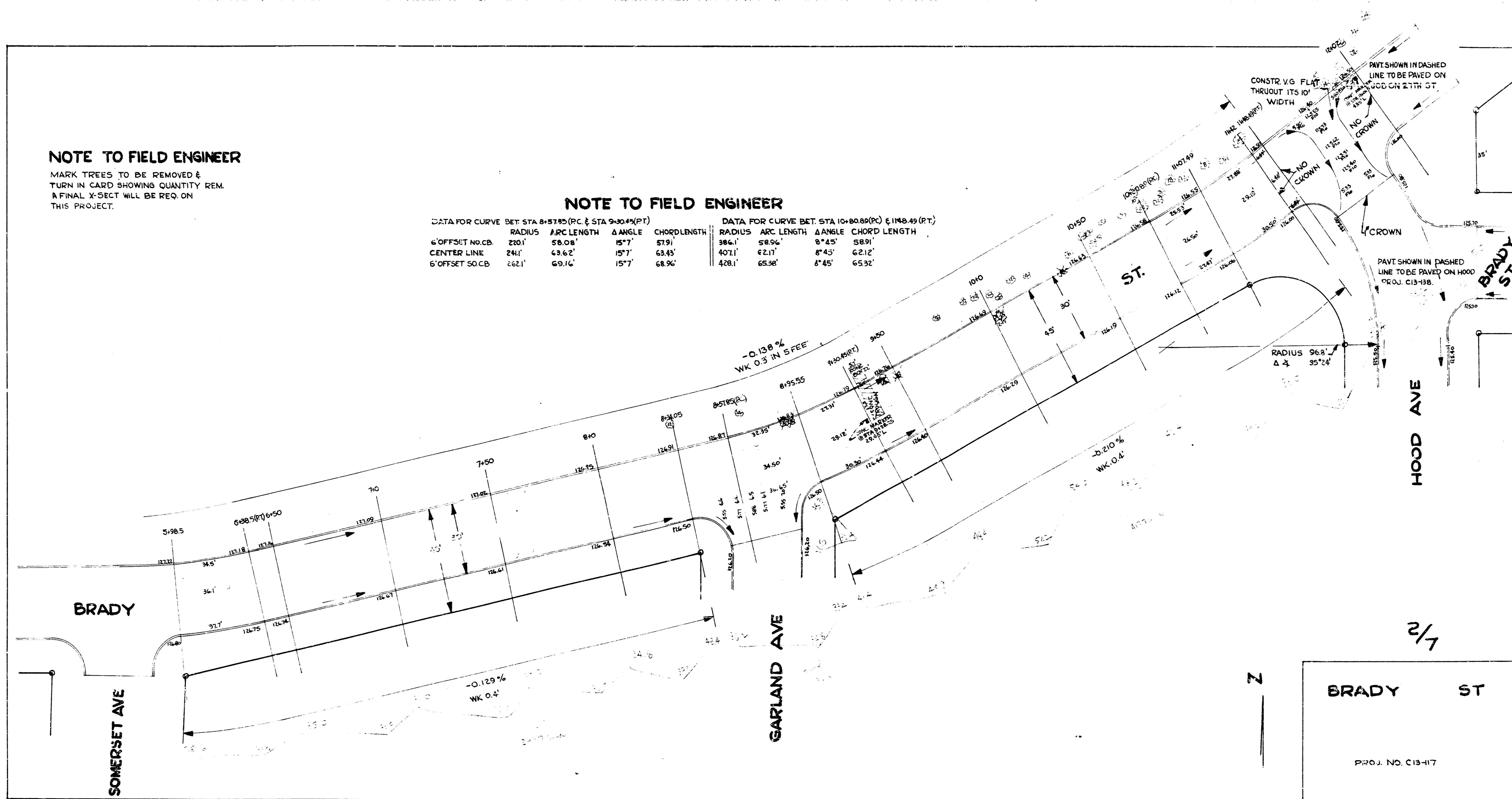


NOTE TO FIELD ENGINEER

MARK TREES TO BE REMOVED & TURN IN CARD SHOWING QUANTITY REM. A FINAL X-SECT WILL BE REQ. ON THIS PROJECT.

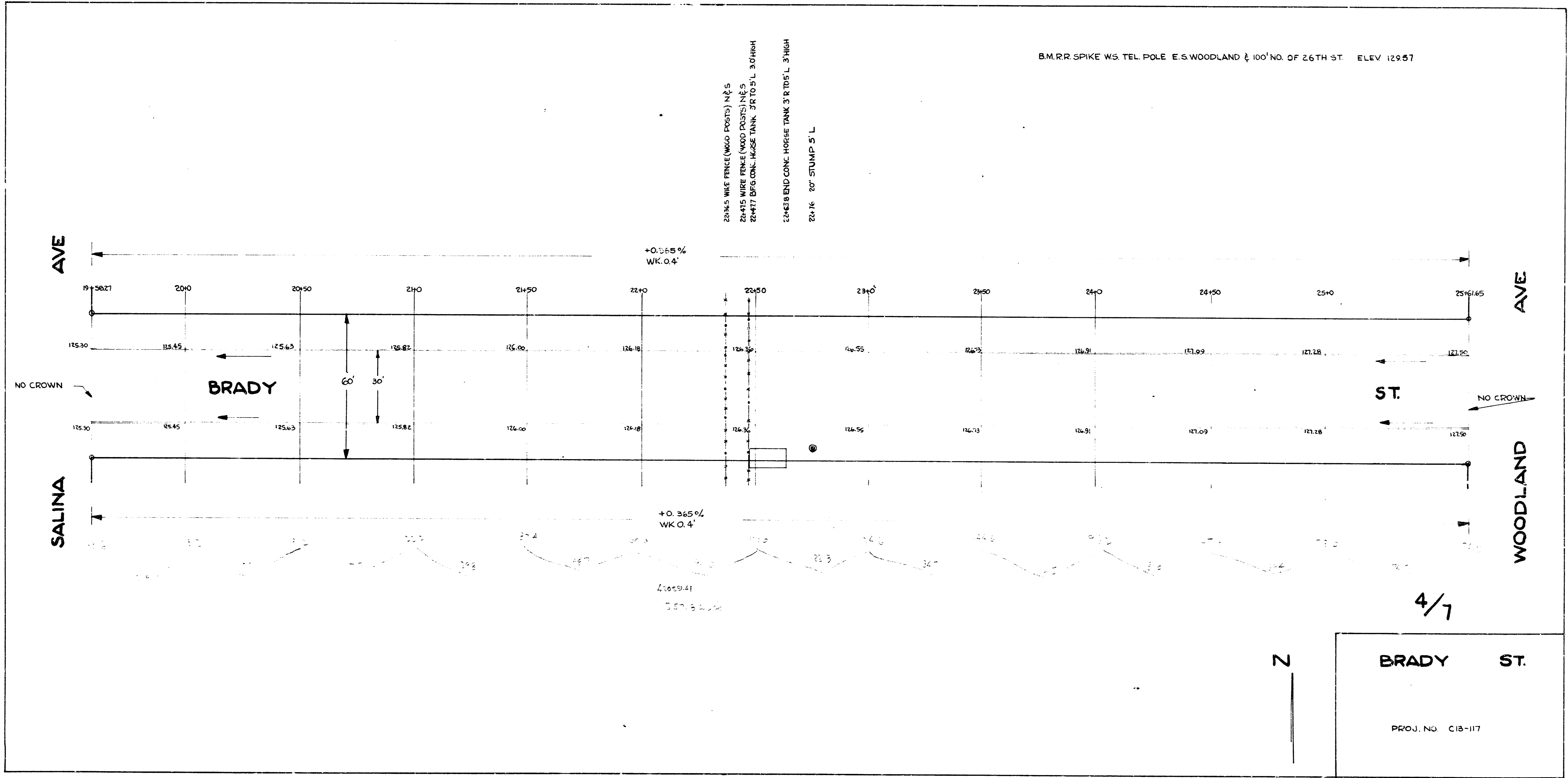
NOTE TO FIELD ENGINEER

DATA FOR CURVE BET. STA 8+57.85 (P.C.) & STA 9+30.44 (P.T.)				DATA FOR CURVE BET. STA 10+80.88 (P.C.) & 11+48.49 (P.T.)				
6' OFFSET NO. CB	RADIUS	ARC LENGTH	Δ ANGLE	CHORD LENGTH	RADIUS	ARC LENGTH	Δ ANGLE	CHORD LENGTH
CENTER LINE	240.1	58.08'	15° 7'	57.91'	386.1	58.04'	8° 25'	58.91'
6' OFFSET SO. CB	262.1	69.16'	15° 7'	68.96'	428.1	65.38'	8° 45'	65.32'



B.M. R.R. SPIKE WS. TEL. POLE E.S. WOODLAND & 100' NO. OF 26TH ST. ELEV. 129.87

2244.5 WIRE FENCE (WOOD POSTS) N&S
22415 WIRE FENCE (WOOD POSTS) N&S
22477 BFG CON. HOSE TANK JR 10.5' L 30" HIGH
22468 BFD CONE. HORSE TANK 3 FT DIA. 3' HIGH
22416 20' STUMP S L



BRADY ST.

PROJ. NO. C13-117

4/7

N