

PAVING PLANS FOR

WILLOWBEND FIFTH ADDITION

CHAMPIONS CIRCLE: FROM THE WEST LINE OF ROCK ROAD TO THE WEST LINE OF CHAMPIONS CIR. AS PLATTED IN WILLOWBEND FIFTH ADD.
 CHAMPIONS COURT: SERVING LOTS 9 THROUGH 13 INCLUSIVE BLK.1 WILLOWBEND FIFTH ADD. FROM THE N. LINE OF CHAMPIONS CIR. TO THE N. LINE OF CHAMPIONS CIR.
 CHAMPIONS COURT: SERVING LOTS 1 THROUGH 4 INCLUSIVE BLK.2 WILLOWBEND FIFTH ADD. FROM THE S. LINE OF CHAMPIONS CIR. TO THE S. LINE OF CHAMPIONS CIR.
 CHAMPIONS COURT: SERVING LOTS 10 THROUGH 12 INCLUSIVE BLK.2 WILLOWBEND FIFTH ADD. FROM THE S. LINE OF CHAMPIONS CIR. TO THE S. LINE OF CHAMPIONS CIR.
 CHAMPIONS COURT: SERVING LOTS 14 THROUGH 17 INCLUSIVE BLK.2 WILLOWBEND FIFTH ADD. FROM THE S. LINE OF CHAMPIONS CIR. TO THE S. LINE OF CHAMPIONS CIR.

PROJECT NO.

472-76-245-80001-000-000-030

CITY OF WICHITA, KANSAS

MICHAEL E. LINDEBAK CITY ENGINEER

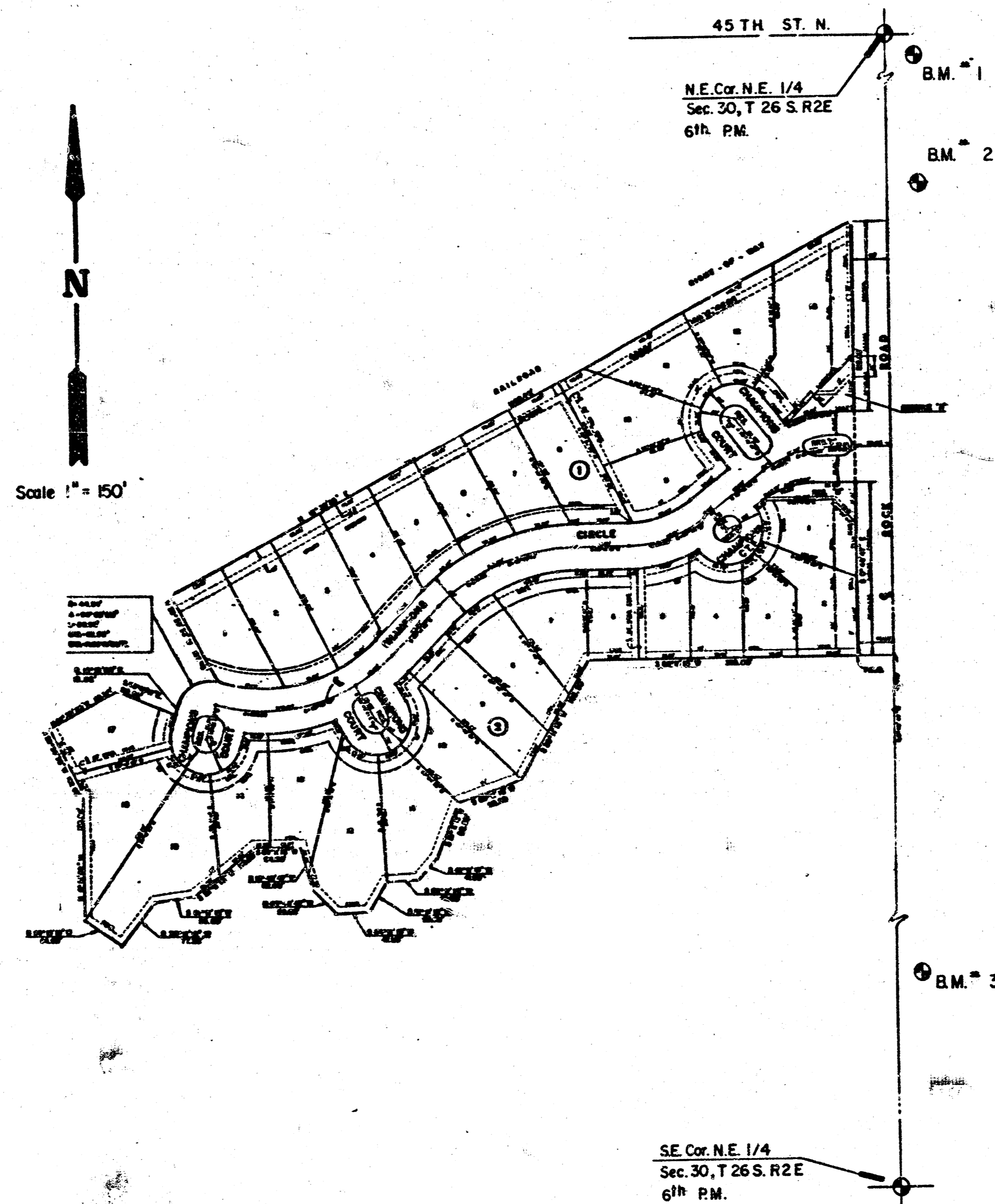
GENERAL NOTES

- CURB AND GUTTER WITH WIDENED GUTTER TO BE PAID AS COMBINED CURB AND GUTTER.
- ALL DRAINAGE STRUCTURES "BY OTHERS".
- THE CONTRACTOR SHALL BE RESPONSIBLE FOR PRESERVING PROPERTY IRONS. THE CONTRACTOR SHALL BE REQUIRED TO RE-ESTABLISH ANY PROPERTY IRONS WHICH ARE DAMAGED OR DESTROYED BY HIS CONSTRUCTION OPERATIONS. SUCH IRONS SHALL BE RE-ESTABLISHED BY A LICENSED LAND SURVEYOR OR A LICENSED PROFESSIONAL ENGINEER IN ACCORDANCE WITH STATE LAWS.
- TRANSITION CURB FROM FULL HEIGHT COMBINATION CURB AND GUTTER TO ROLL TYPE COMBINATION CURB AND GUTTER IS TO BE PAID AS BID FOR LINEAR FEET COMBINED CURB AND GUTTER. (3 5/8" ROLL).
- I-A INLET HOOKUPS TO BE BID EACH. SIZE VARIES.
- NO MORE THAN 5-20' DRIVEWAY APPROACHES OR THE EQUIVALENT TO BE CONSTRUCTED.
- ALL CONCRETE SHALL BE STANDARD PAVING MIX UNLESS OTHERWISE NOTED.
- EXISTING UTILITIES AND THEIR LOCATIONS, AS SHOWN ON THE PLANS, REPRESENT THE BEST INFORMATION OBTAINABLE FOR DESIGN. LOCATION INFORMATION HAS BEEN OBTAINED FROM THE VARIOUS UTILITY COMPANIES AND IS EITHER FROM COMPANY RECORD DRAWINGS OR COMPANY PROVIDED FIELD LOCATIONS. THE PLAN LOCATIONS SHOWN ARE NOT GUARANTEED. ADDITIONAL EXISTING UTILITIES MAY ALSO BE ENCOUNTERED.
- CONTRACTOR WILL BE REQUIRED TO PROVIDE A MINIMUM ADVANCE NOTICE OF TWENTY-FOUR (24) HOURS TO UTILITY COMPANIES PRIOR TO STARTING ANY EXCAVATION AS FOLLOWS:

SOUTHWESTERN BELL TELEPHONE COMPANY	1-316-571-2611
CABLEVISION	262-4270 or 263-2061
KPL GAS SERVICE	263-7511
KANSAS GAS & ELECTRIC	264-1141
CITY OF WICHITA WATER DEPARTMENT	268-4908
CITY OF WICHITA SEWER DEPARTMENT	268-4071
ARKLA GAS COMPANY	942-8350 or 263-8161

BENCH MARKS

- B.M. 1 R.R. Spike in W. Face Power Pole at S.E. Corner 45th St. & Rock Rd. Elev. 197.93
- B.M. 2 Top of Bolt in Corner Fence Pnt at S.E. Corner R.R. ROW and Rock Rd. Elev. 196.16
- B.M. #3 = cut on NE corner of Big Box under Rock Road + 900' E of E Quarter corner section 30, Township 28 South, Range 2 East. Elev. = 196.99



INDEX TO DRAWINGS

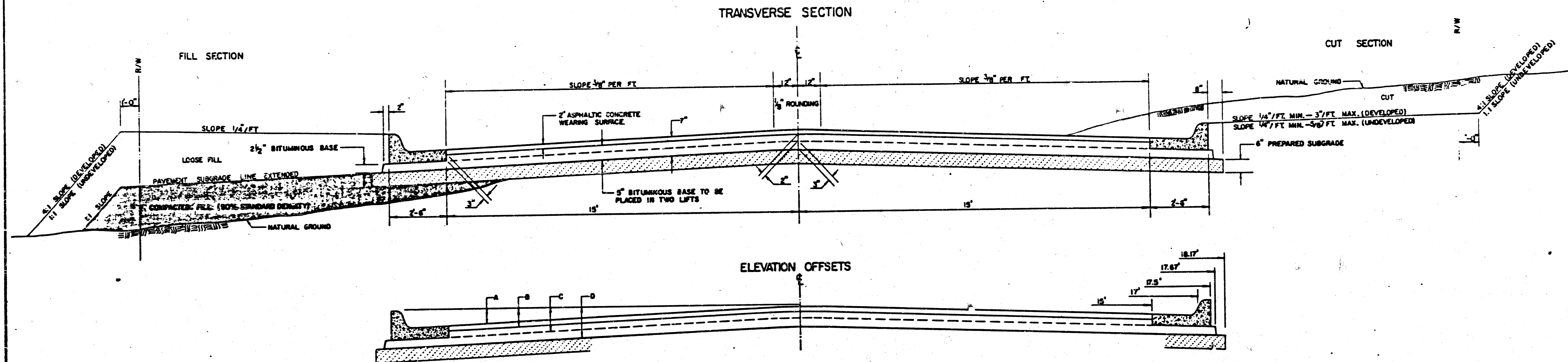
SHEET NO.	DESCRIPTION
1	TITLE SHEET
2-3	PAVING DETAILS
4-5	CHAMPIONS CIRCLE
6	FINAL PLAT

AS BUILT - OCT 1988

	WILLOWBEND FIFTH PAVING PLANS	Design by Checked by Date Aug. 1987 Job no.
	MID-KANSAS ENGINEERING CONSULTANTS PA 3500 NORTH ROCK ROAD BUILDING 1800 WICHITA, KANSAS 67226	682-6561

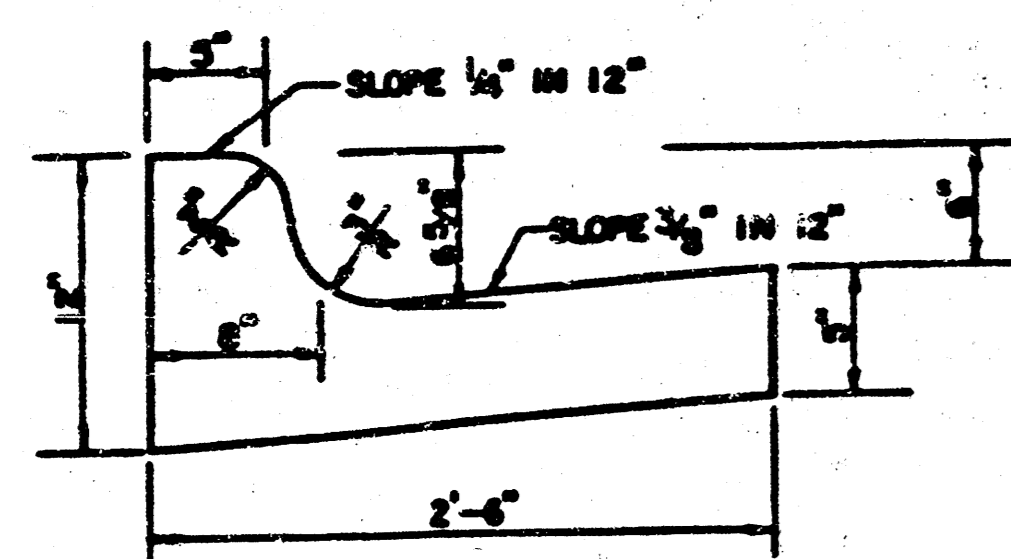
FILMED FROM THE BEST AVAILABLE COPY

TYPICAL 35' PAVEMENT DETAILS

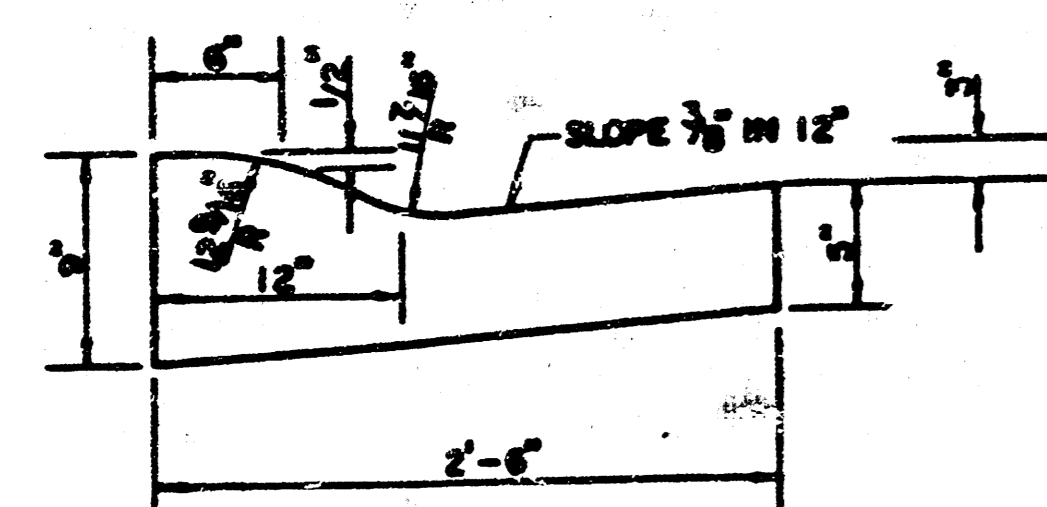


	DISTANCE FROM CENTERLINE (LT. & RT.)												
	0'	2'	4'	6'	8.5'	10'	12'	14'	15'	17'	17.5'	17.67'	18.17'
A: TOP OF CURBS TO TOP OF SURFACE LIFT	0.04	0.08	0.14	0.21	0.29	0.33	0.39	0.46	0.49	—	—	—	—
B: TOP OF CURBS TO TOP OF UPPER BASE LIFT	0.21	0.25	0.31	0.37	0.45	0.50	0.56	0.62	0.65	—	—	—	—
C: TOP OF CURBS TO TOP OF LOWER BASE LIFT	0.37	0.43	0.50	0.57	0.67	0.72	0.79	0.87	0.90	0.96	1.00	1.00	—
D: TOP OF CURBS TO TOP OF SUBGRADE	0.62	0.67	0.74	0.81	0.90	0.95	1.02	1.06	1.12	1.19	1.21	1.21	1.23

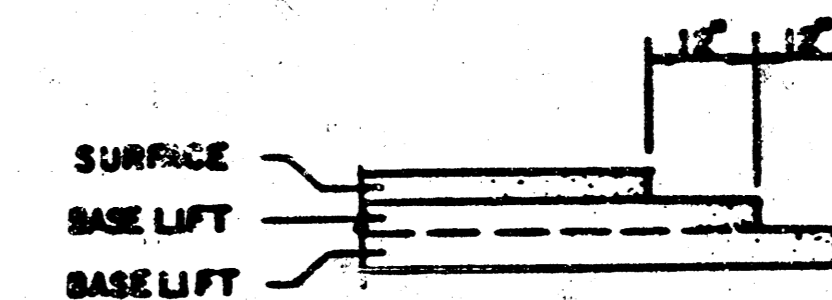
COMBINED CURB & GUTTER



ROLL TYPE COMBINED CURB & GUTTER



TRANSVERSE CONSTRUCTION JOINTS



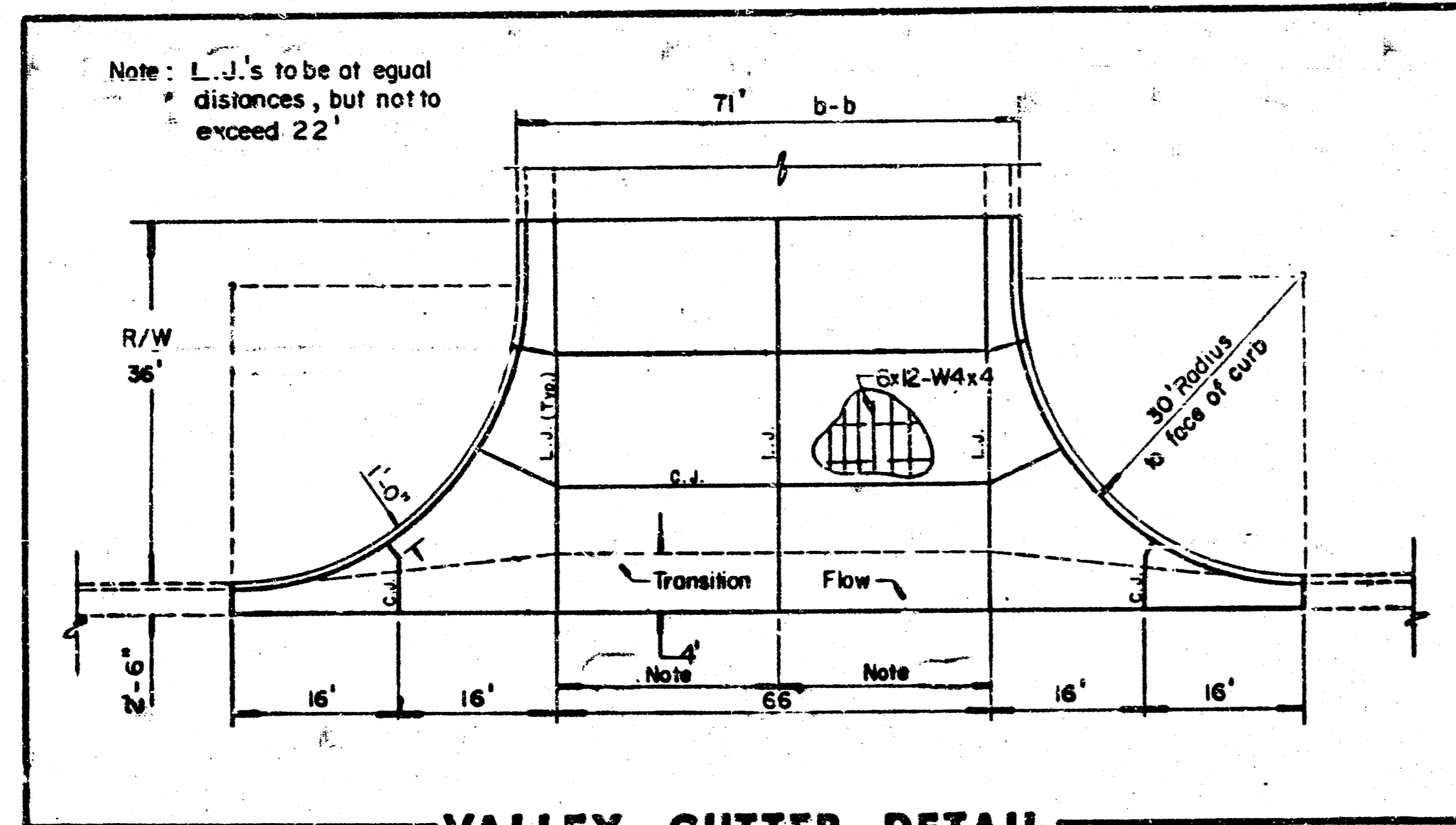
TRANSVERSE CONSTRUCTION JOINTS SHALL BE CONSTRUCTED IN FLEXIBLE BASE PAVEMENTS AT LOCATIONS WHERE PAVEMENTS JOIN EXISTING FLEXIBLE BASE PAVEMENT AS SHOWN BY THE DETAIL. ALL COSTS ASSOCIATED WITH THE CONSTRUCTION OF THE TRANSVERSE JOINT SHALL BE INCLUDED IN THE BID PRICE FOR SQUARE YARDS 6" ASPHALTIC CONCRETE (5" BITUMINOUS BASE).

GENERAL NOTES

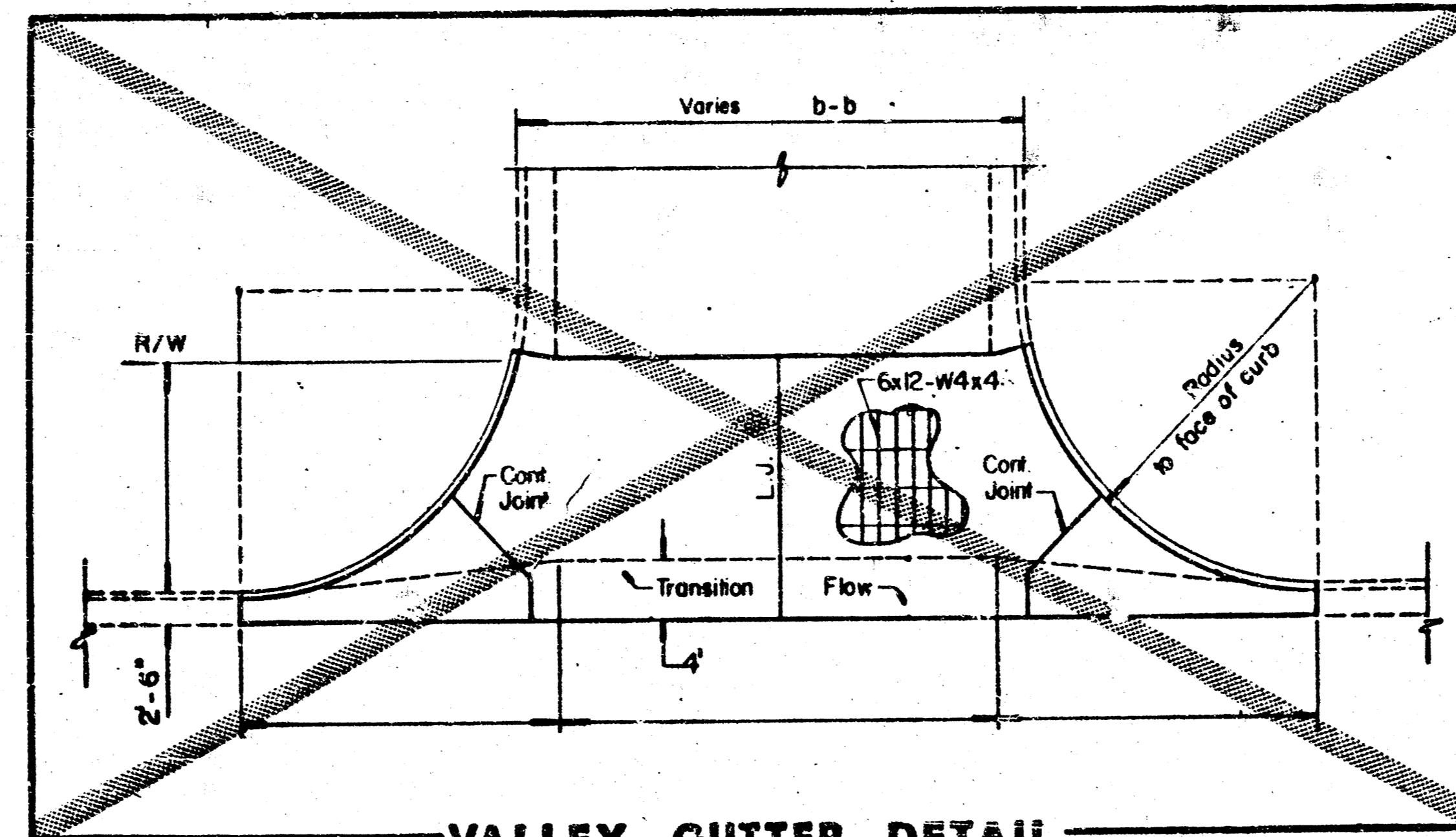
- 1) THE ASPHALTIC CONCRETE PAVEMENT BETWEEN THE COMBINED CURB AND GUTTER SHALL BE PAID AS SQUARE YARDS OF 7" ASPHALTIC CONCRETE (5" BITUMINOUS BASE).
- 2) THE BITUMINOUS BASE UNDER AND BEHIND THE COMBINED CURB AND GUTTER SHALL BE PAID AS SQUARE YARDS OF 2 1/2" BITUMINOUS BASE.
- 3) A TACK COAT OF EMULSIFIED ASPHALT (SC-1H OR CSS-1H) SHALL BE APPLIED AT AN APPROXIMATE RATE OF 0.05 GALLONS PER SQUARE YARD BETWEEN EACH LIFT OF ASPHALTIC MATERIAL.
- 4) BITUMINOUS BASE AND ASPHALTIC CONCRETE WEARING SURFACE SHALL BE PLACED WITH A LAIDOWN MACHINE HAVING AUTOMATIC CONTROLS FOR LINE AND GRADE.
- 5) CONSTRUCTION JOINTS IN EACH LIFT SHALL BE STAGGERED A MINIMUM DISTANCE OF ONE (1) FOOT FROM JOINTS IN PRECEDING LIFTS AND PLACED SO THAT A JOINT WILL BE CONSTRUCTED ON THE CENTERLINE OF THE TOP LIFT.
- 6) CONTRACTOR TO BID ONLY ONE SUBGRADE TREATMENT ALTERNATE WHEN ALTERNATES ARE PROVIDED IN THE PROPOSAL AND CONTRACT. THE ALTERNATE CHOSEN BY THE SUCCESSFUL BIDDER SHALL BE USED IN CONSTRUCTING THIS PROJECT.

7 INCH RESIDENTIAL ASPHALTIC CONCRETE PAVEMENT WITH 5 INCH BITUMINOUS BASE
CITY OF WICHITA, KANSAS

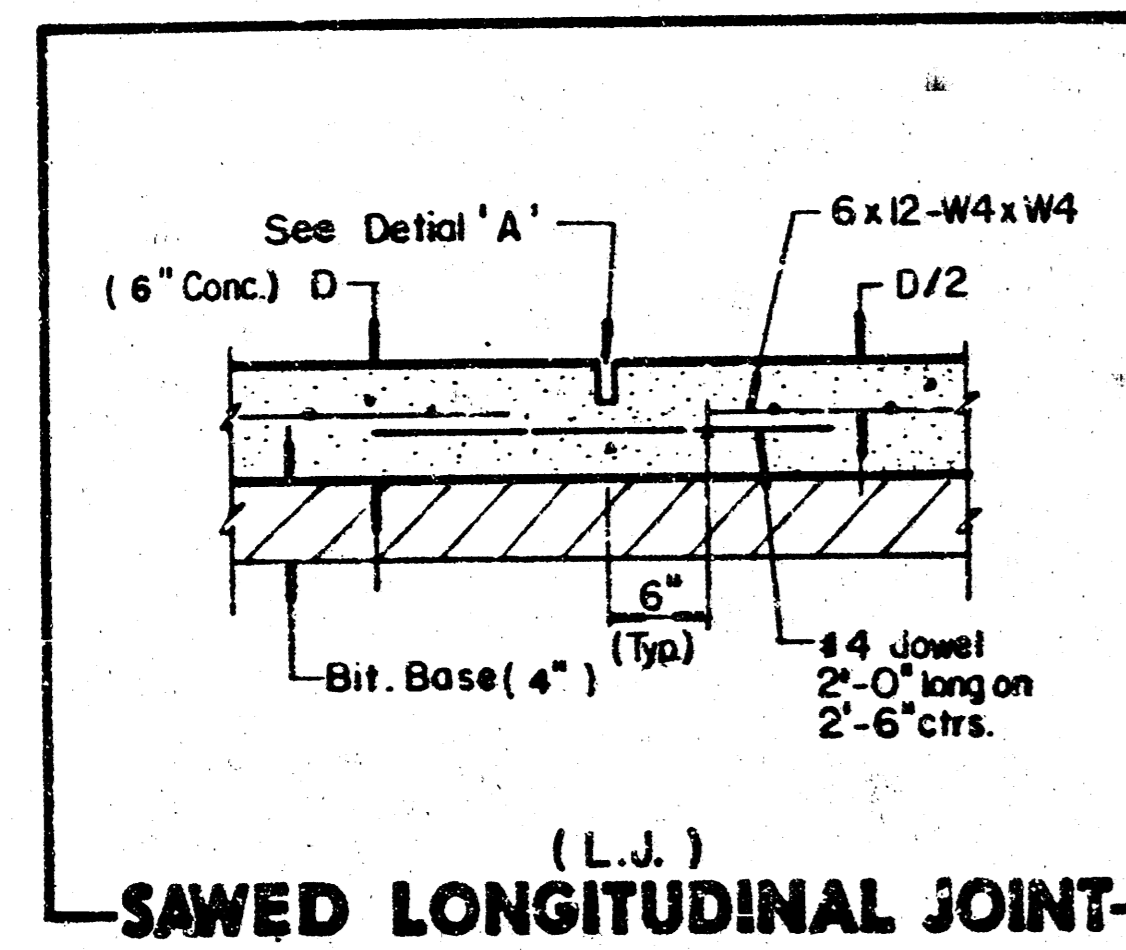
2 6 1



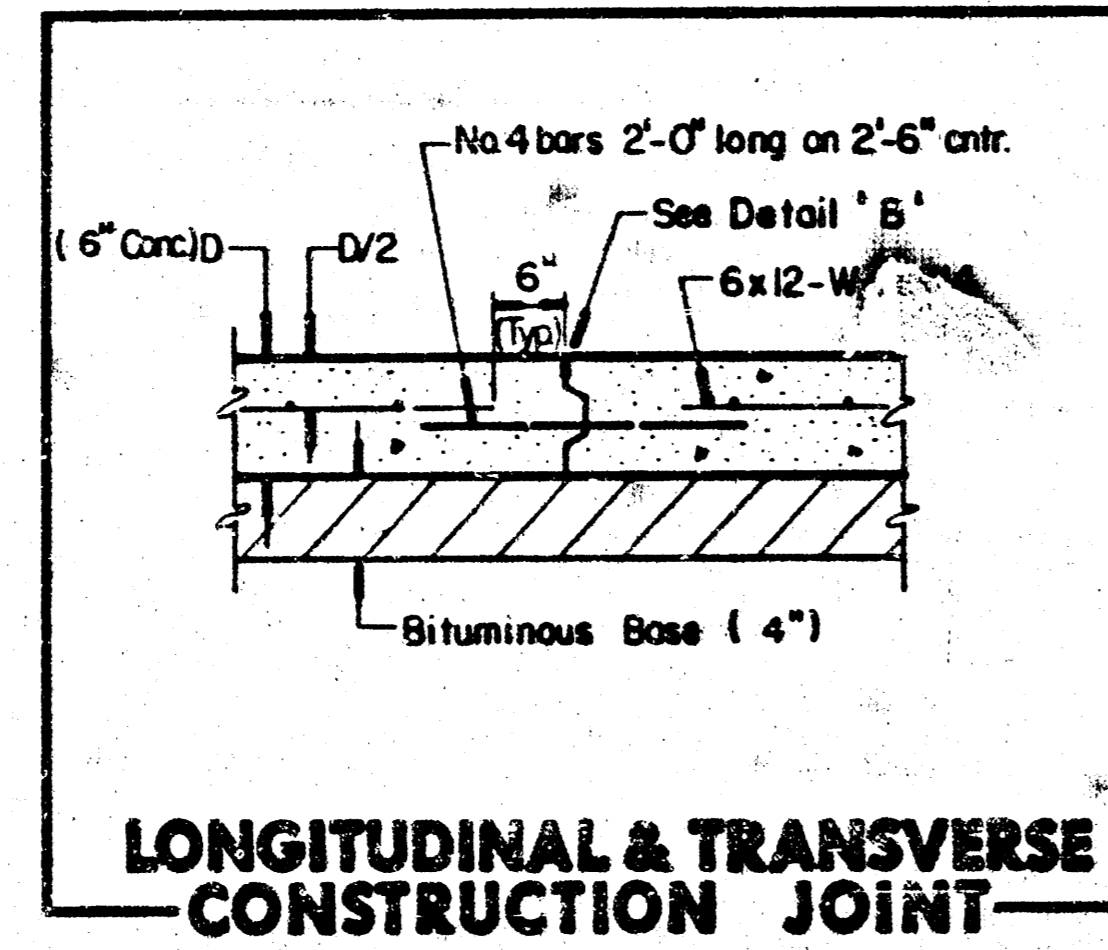
VALLEY GUTTER DETAIL
Champions Circle & Rock Road Intersection



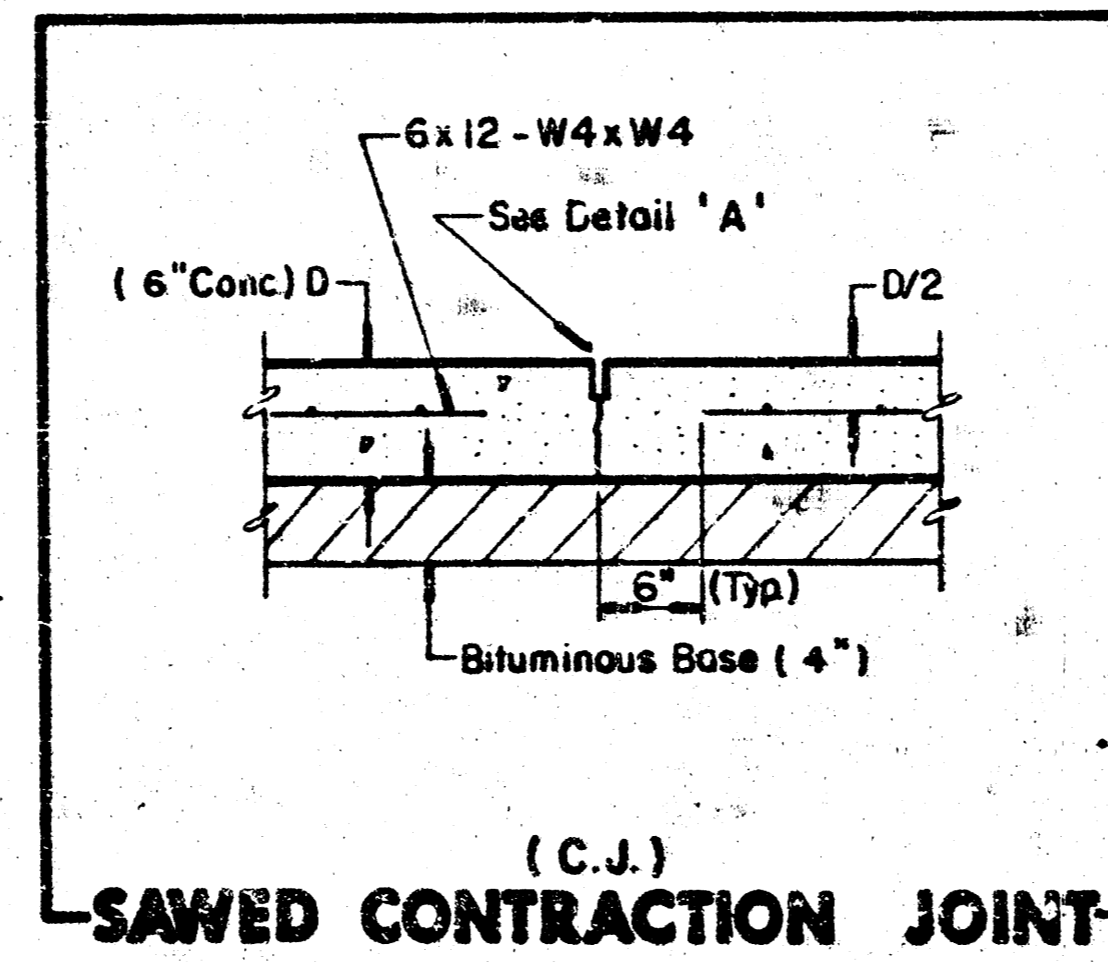
VALLEY GUTTER DETAIL



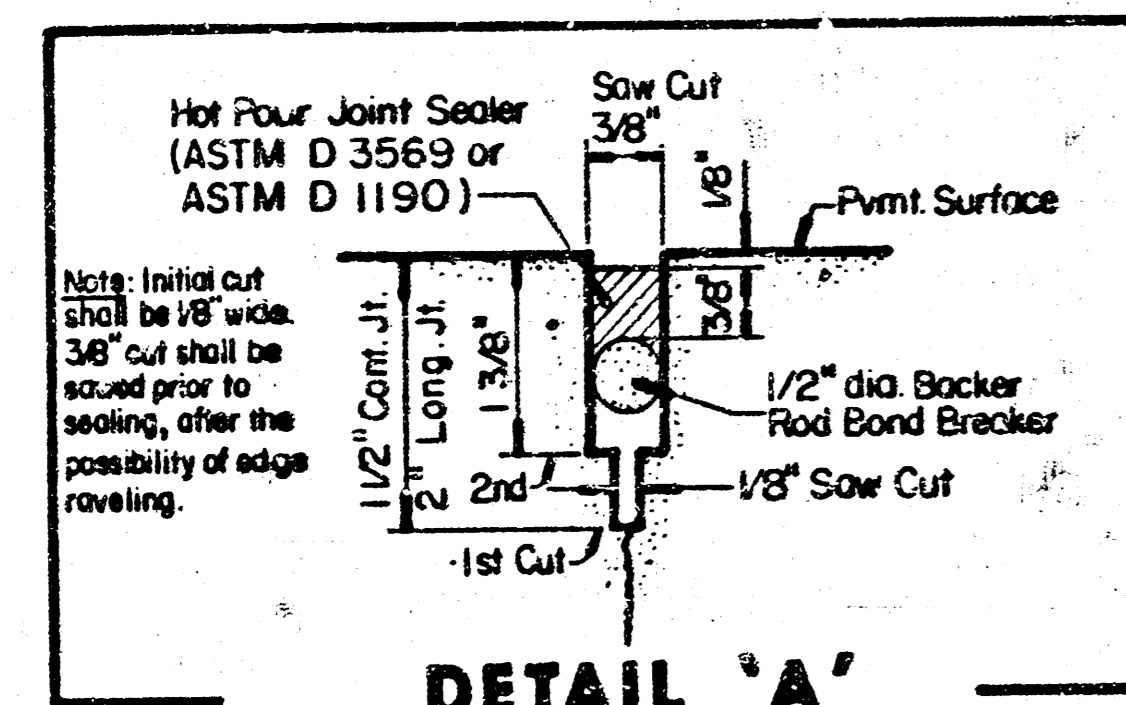
(L.J.)
SAWED LONGITUDINAL JOINT



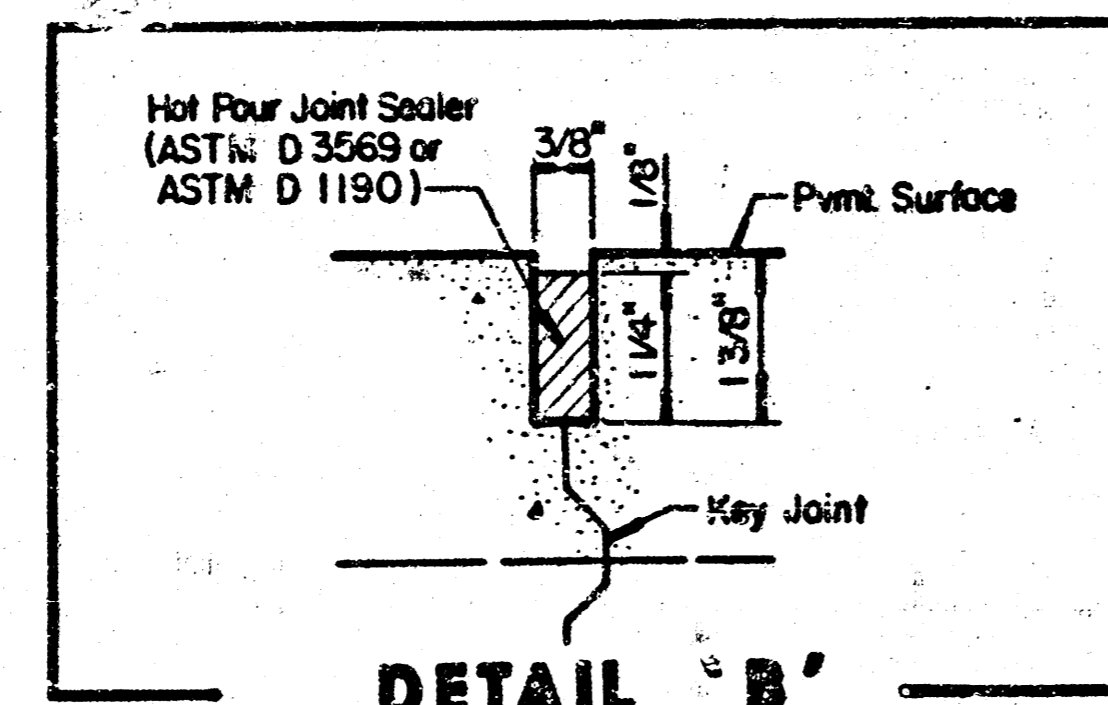
LONGITUDINAL & TRANSVERSE CONSTRUCTION JOINT



(C.J.)
SAWED CONTRACTION JOINT



DETAIL 'A'



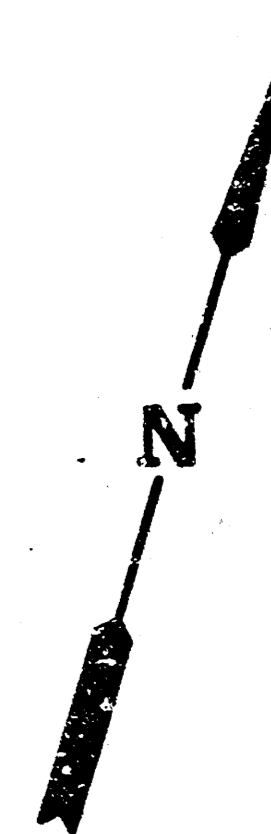
DETAIL 'B'

	DETAILS	Design
		Drawn by
		Checked by
		Date
MID-KANSAS ENGINEERING CONSULTANTS PA 3500 NORTH ROCK ROAD BUILDING #600 WICHITA, KANSAS 67226		Job no. Sheet 3 of 5
		682-6561

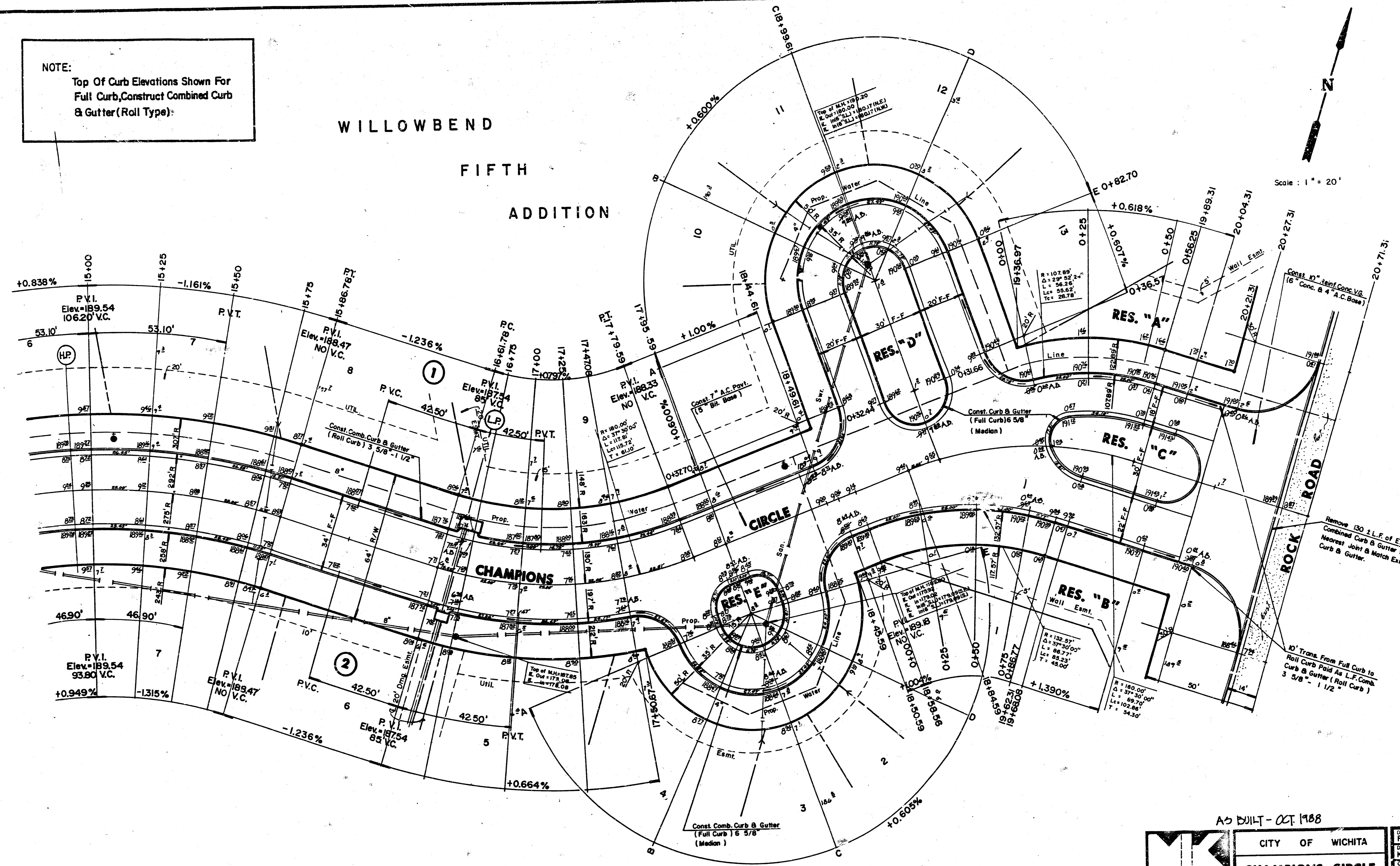
FILMED FROM THE BEST AVAILABLE COPY

NOTE:
Top Of Curb Elevations Shown For
Full Curb, Construct Combined Curb
& Gutter (Roll Type):

WILLOWBEND
FIFTH
ADDITION



Scale: 1" = 20'

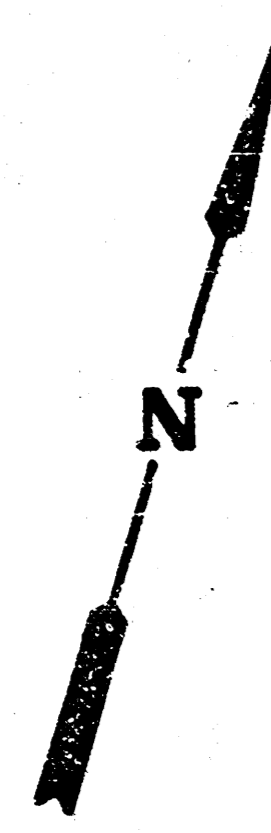


AS BUILT - OCT. 1988

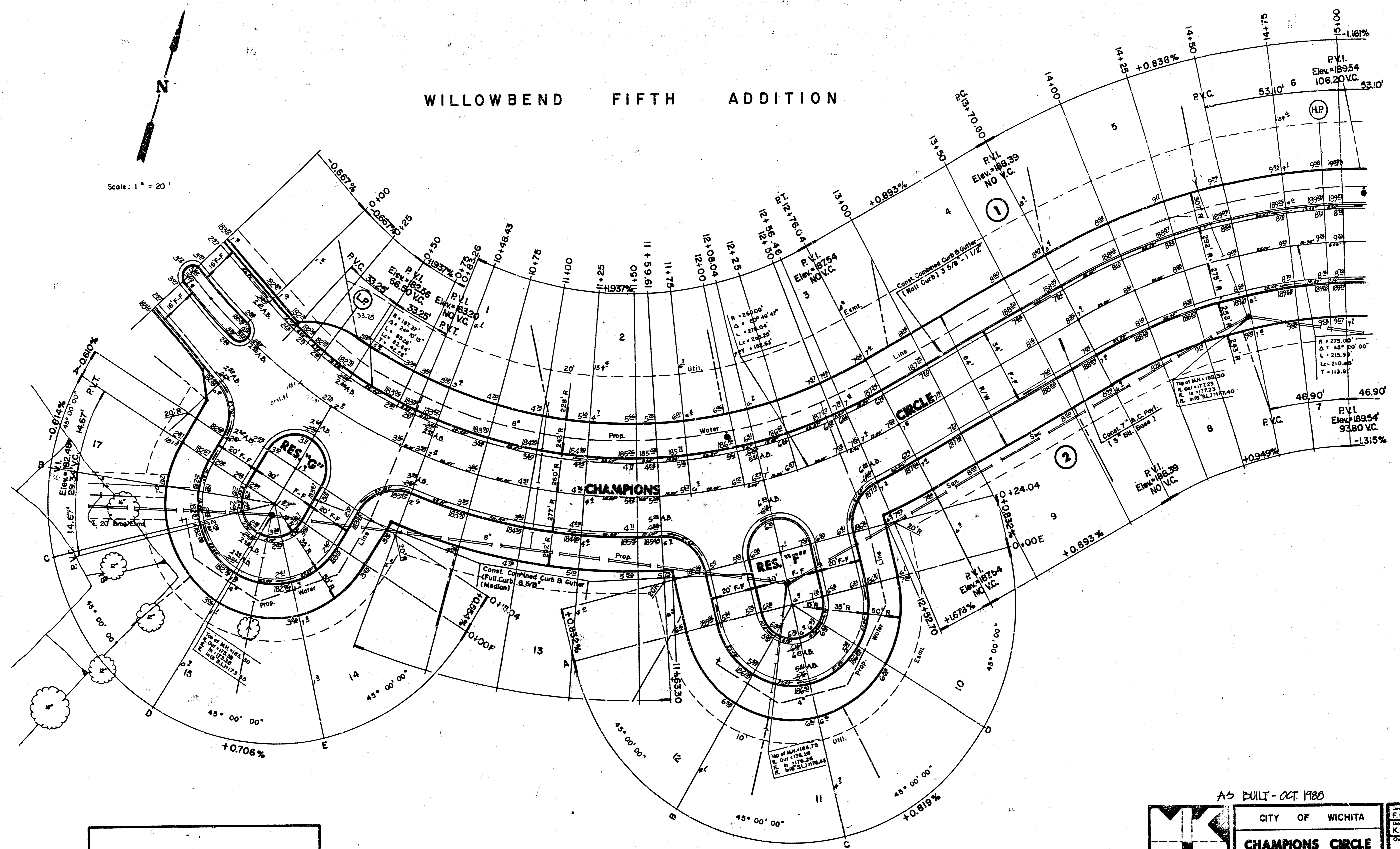
	CITY OF WICHITA		F.F. Drawn by K.S.M., E.C.G.
	CHAMPIONS CIRCLE		Checked by Date AUG, 1987
	PROJECT NO. 472-76-245-80001-000-000-030		Sheet 4 of 6
MID-KANSAS ENGINEERING CONSULTANTS PA 3500 NORTH ROCK ROAD BUILDING 1600 WICHITA, KANSAS 67226			682-6561

FILMED FROM THE BEST
AVAILABLE COPY.....

WILLOWBEND FIFTH ADDITION



Scale: 1" = 20'



NOTE:
Top Of Curb Elevations Shown For
Full Curb, Construct Combined Curb
& Gutter (Roll Type).

AS BUILT - OCT. 1988

	CITY OF WICHITA	Design F.F.
	CHAMPIONS CIRCLE	Drawn by K.S.M.E.G.G.
	PROJECT NO. 472-76-245-80001-000-000-030	Checked by
MID-KANSAS ENGINEERING CONSULTANTS PA 3500 NORTH ROCK ROAD BUILDING 1800 WICHITA, KANSAS 67226		Date AUG., 1987
		Sheet 5 5/5 of 6

FILMED FROM THE BEST
AVAILABLE COPY