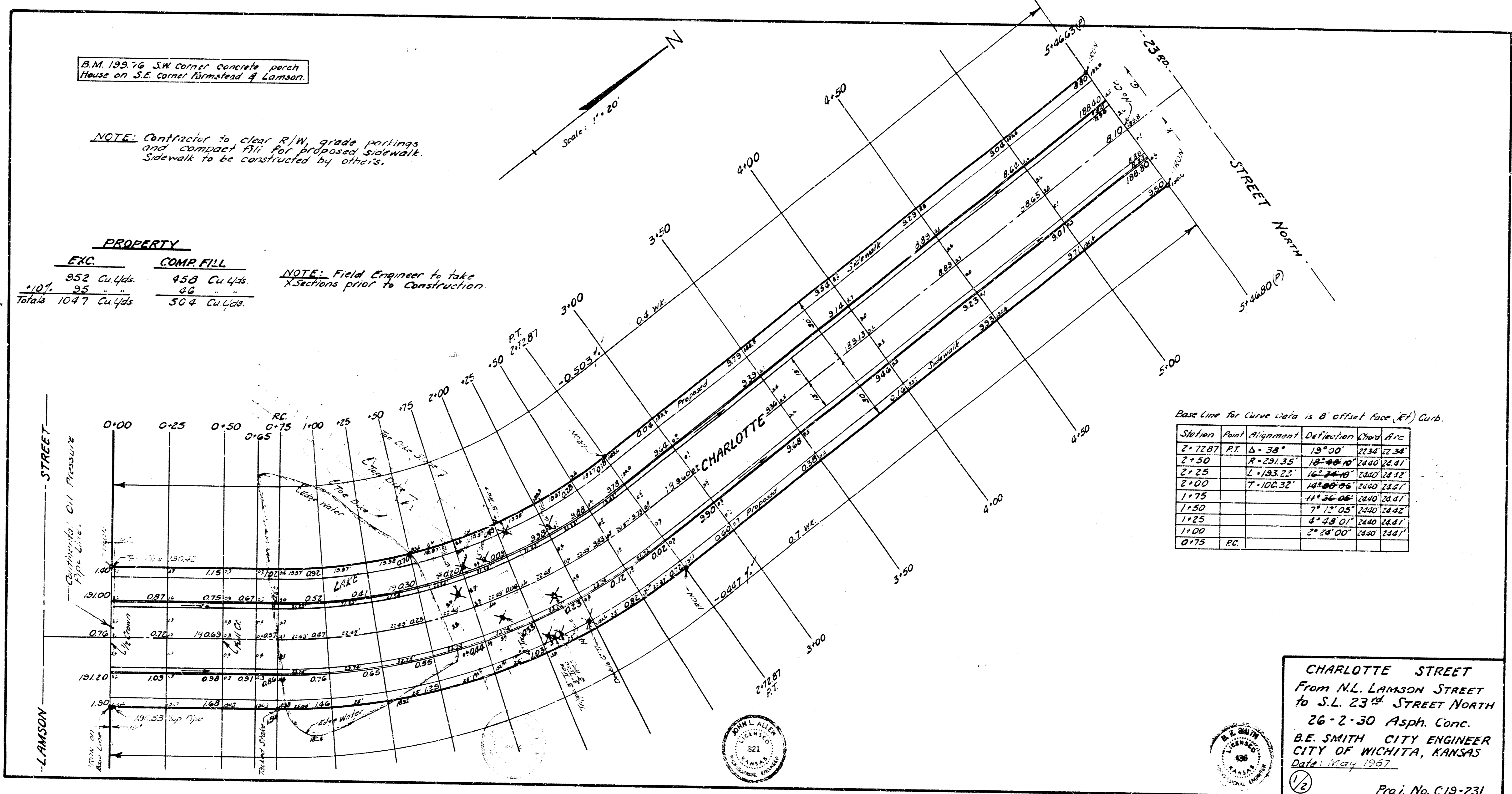


B.M. 199.76 SW corner concrete porch  
House on S.E. corner firmstead of Lamson.

NOTE: Contractor to clear R/W, grade parkings  
and compact fill for proposed sidewalk.  
Sidewalk to be constructed by others.

PROPERTY	
EXC.	COMP. FILL
952 Cu.Yds.	458 Cu.Yds.
+10' 95	46
Totals 1047 Cu.Yds.	504 Cu.Yds.

NOTE: Field Engineer to take  
X-sections prior to construction.



Base Line for Curve Data is 8' offset face (Rt) Curb.

Station	Point	Alignment	Deflection	Chord Arc
2+72.87	PT.	$\Delta = 38^\circ$	$13^\circ 00'$	2234 22.34
2+50		$R = 291.35'$	$10^\circ 00' 10''$	2440 24.41
2+25		$L = 183.23'$	$16^\circ 00' 06''$	2440 24.41
2+00		$T = 100.32'$	$14^\circ 00' 06''$	2440 24.41
1+75			$11^\circ 00' 06''$	2440 24.41
1+50			$7^\circ 12' 05''$	2440 24.42
1+25			$4^\circ 48' 01''$	2440 24.41
1+00			$2^\circ 24' 00''$	2440 24.41
0+75	PC.			

CHARLOTTE STREET  
From N.L. LAMSON STREET  
to S.L. 23<sup>rd</sup> STREET NORTH  
26-2-30 Asph. Conc.  
B.E. SMITH CITY ENGINEER  
CITY OF WICHITA, KANSAS  
Date: May 1957

Proj. No. C19-231

