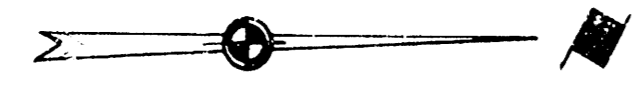
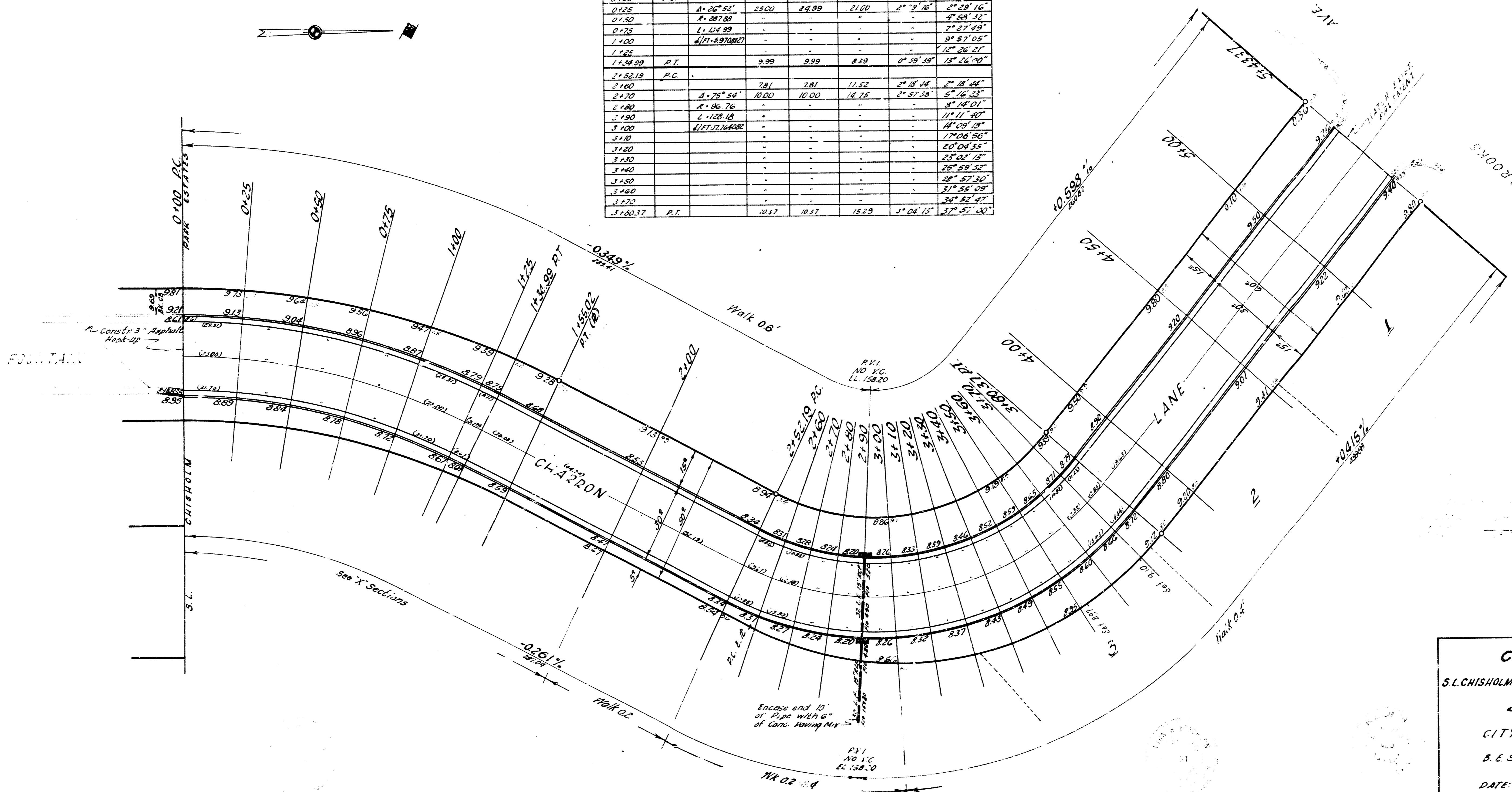


S. 1/4 Sec. 23, E. 1/4 Sec. 36 of T. 14. S. 23. R. 10. E. of S. L. Chisholm Park Estates.



Stationing 80' Offset face of West Curb

CURVE DATA						
STATION	POINT	ALIGNMENT	ARC LENGTH	CHORD LENGTH	DEFLECTION	TOTAL DEFLECTION
0+00	P.C.					
0+25		A-26° 52'	55.00	54.89	2' 16"	2° 28' 16"
0+50		P-207° 38'				4° 58' 54"
0+75		L-134° 39'				8° 27' 02"
1+00		W-111° 59' 00"				12° 26' 52"
1+25						15° 26' 00"
1+50	P.T.		9.99	9.99	8° 33'	23° 26' 00"
2+50.19	P.C.					
2+80			781	781	11.52	34° 48' 48"
2+70		A-75° 50'	10.00	10.00	12.75	47° 26' 54"
2+80		A-56° 76'				60° 04' 01"
2+90		L-128° 18'				72° 52' 49"
3+00		W-117° 34' 40"				85° 41' 29"
3+10						98° 06' 56"
3+20						110° 04' 35"
3+30						121° 52' 14"
3+40						133° 40' 52"
3+50						145° 29' 30"
3+60						157° 18' 08"
3+70						169° 06' 46"
3+80.97	P.T.		10.87	10.87	15.29	181° 55' 24"



CHARRON LN.
 S.L. CHISHOLM PARK ESTATES S.L. BROOKS AVE
 26'-2'-30" AC
 CITY OF WICHITA, KANS
 B. E. SMITH CITY ENGINEER
 DATE: PAJ. NO. C-19-195

Drawing by B.E.S.
 Paper July 11, 1945