

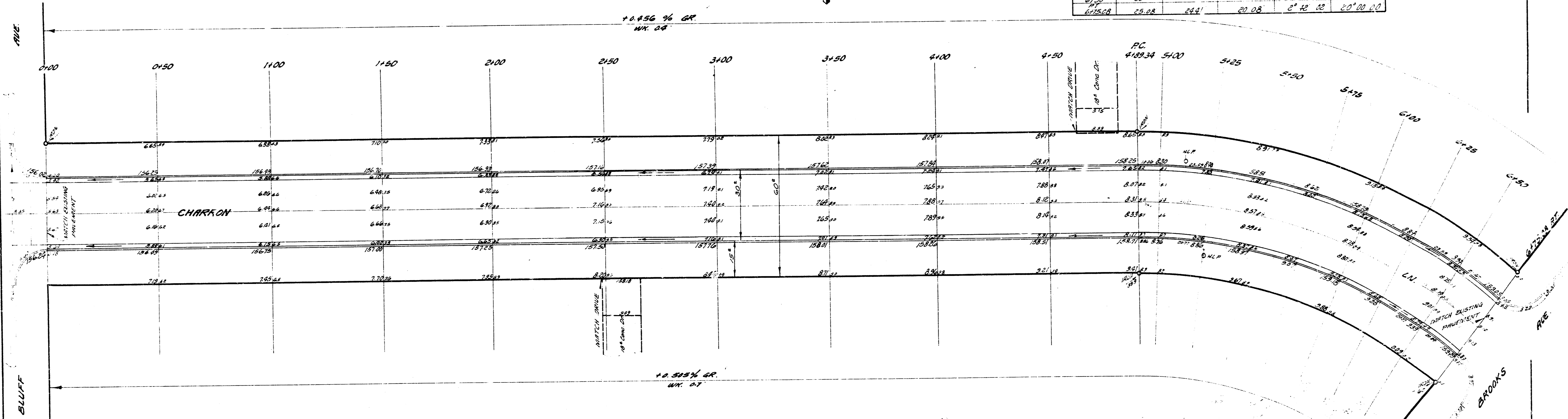
2 1/2" 100' = 1" IN TOWN FIRE ALARM BELL BELLERS & CHARRON LN.  
 2 1/2" 100' = 1" IN TOWN FIRE ALARM BELL BELLERS & CHARRON LN.  
 2 1/2" 100' = 1" IN TOWN FIRE ALARM BELL BELLERS & CHARRON LN.



Scale = 1" = 20'

CURVE DATA BASED ON N. 1/2

STATION	ARC LENGTH	CHORD BEARING	CHORD LENGTH	DEFLECTION	TOTAL DEFLECTION
4+00	12.00	S 88° 36'	8.00	1° 08' 50"	1° 08' 50"
4+12.5	25.00	S 82° 36'	16.00	2° 31' 31"	3° 40' 21"
4+37.5	37.50	S 72° 36'	24.00	4° 08' 50"	7° 49' 11"
4+75.0	75.00	S 32° 36'	48.00	11° 08' 50"	18° 58' 01"
5+12.5	12.50	S 22° 36'	12.50	15° 08' 50"	34° 06' 51"
5+25.0	25.00	S 12° 36'	25.00	17° 17' 08"	51° 24' 59"
5+50.0	50.00	S 02° 36'	50.00	20° 08' 00"	71° 33' 59"



**CHARRON LN.**  
 E.L. BLUFF AVE TO N.W. BRADENS AVE  
 26° - 2' - 30" RC.  
 CITY OF WICHITA, KANSAS  
 B. E. SMITH, CITY ENGINEER  
 DATE: 2/1/19 PROJ. NO. C-19-199

ELEVATION  
 1882.2  
 1882.2  
 171.60 13.44

