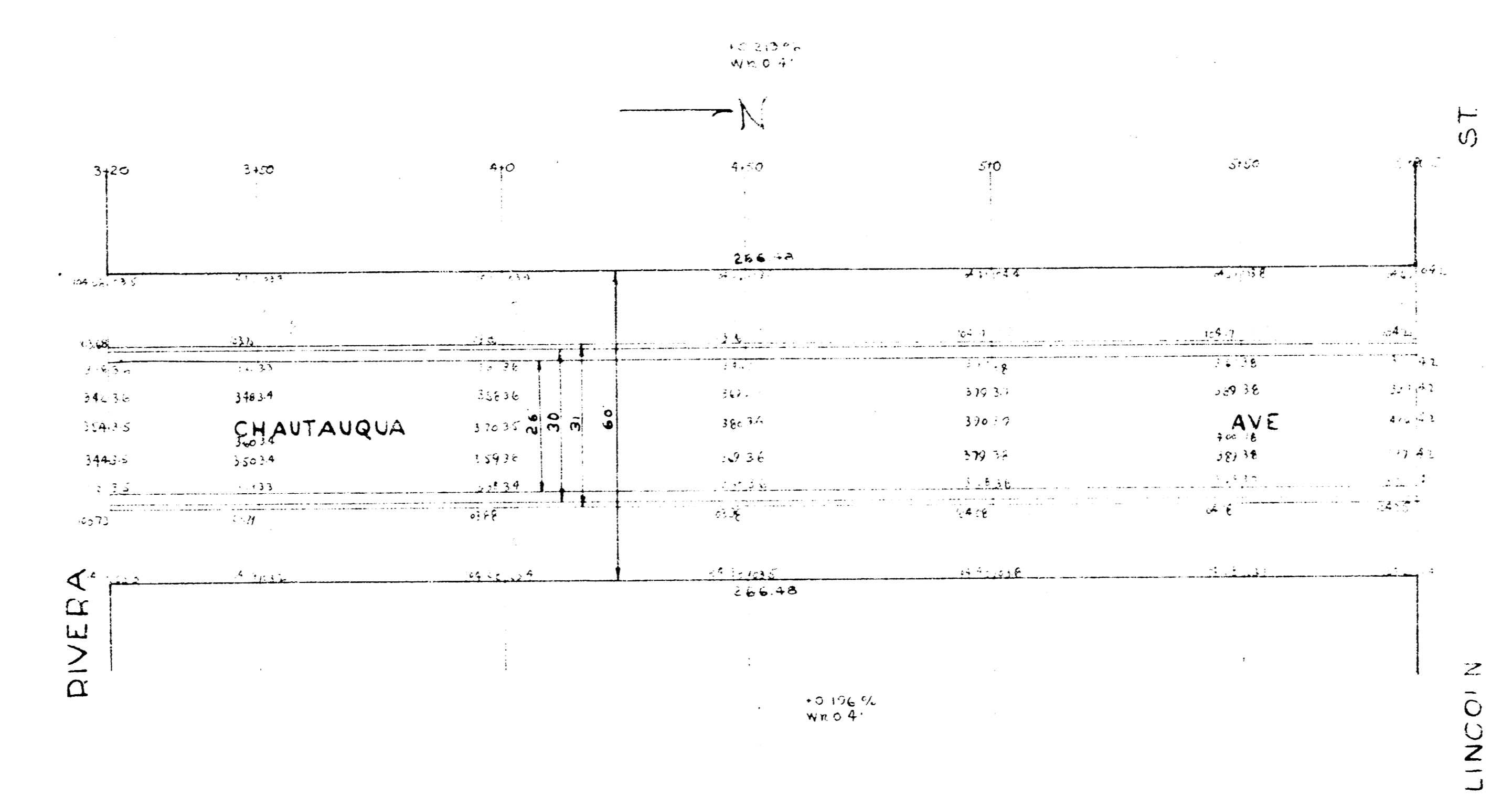


10 213 74
 W 0 4
 CHAUTAUQUA S. L. RIVERA
 10 196 74
 W 0 4

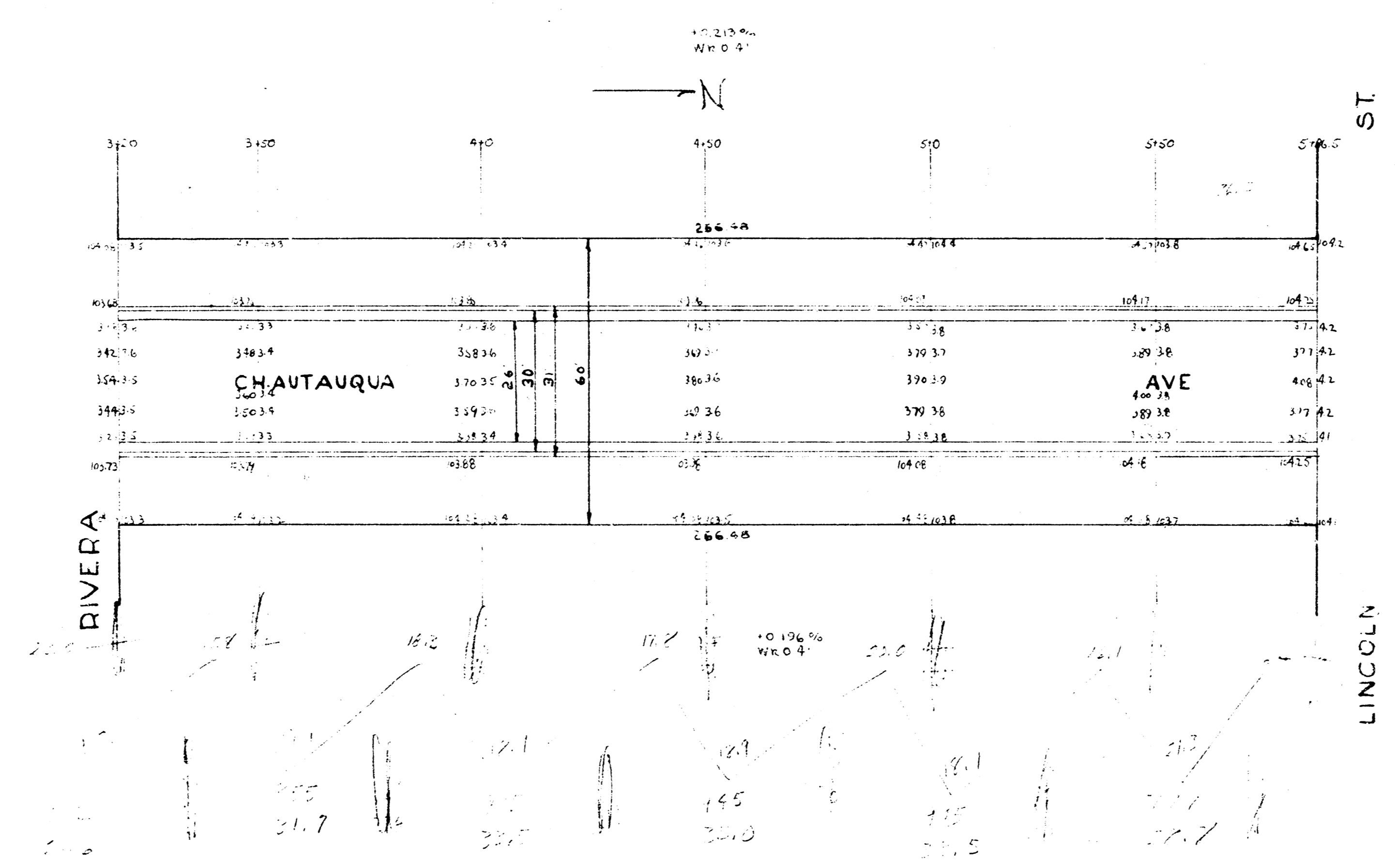
10 213 74
 W 0 4



10 213 74
 W 0 4
 927

CHAUTAUQUA AVE
 SE LINCOLN IN NE RIVERA
 26'-2'-30" ASPHALT CONCRETE
 CITY OF WICHITA, KANS.
 LK WHITE CITY ENGINEER
 DEC 13 1946

BM 103.04 Top of Iron W. Chautauqua St. Burma



CHAUTAUQUA AVE
SL LINCOLN to N.L RIVERA
26-2-30' ASPHALT CONCRETE
CITY of WICHITA, KANS.
L.K WHITE CITY ENGINEER
DEC. 1946