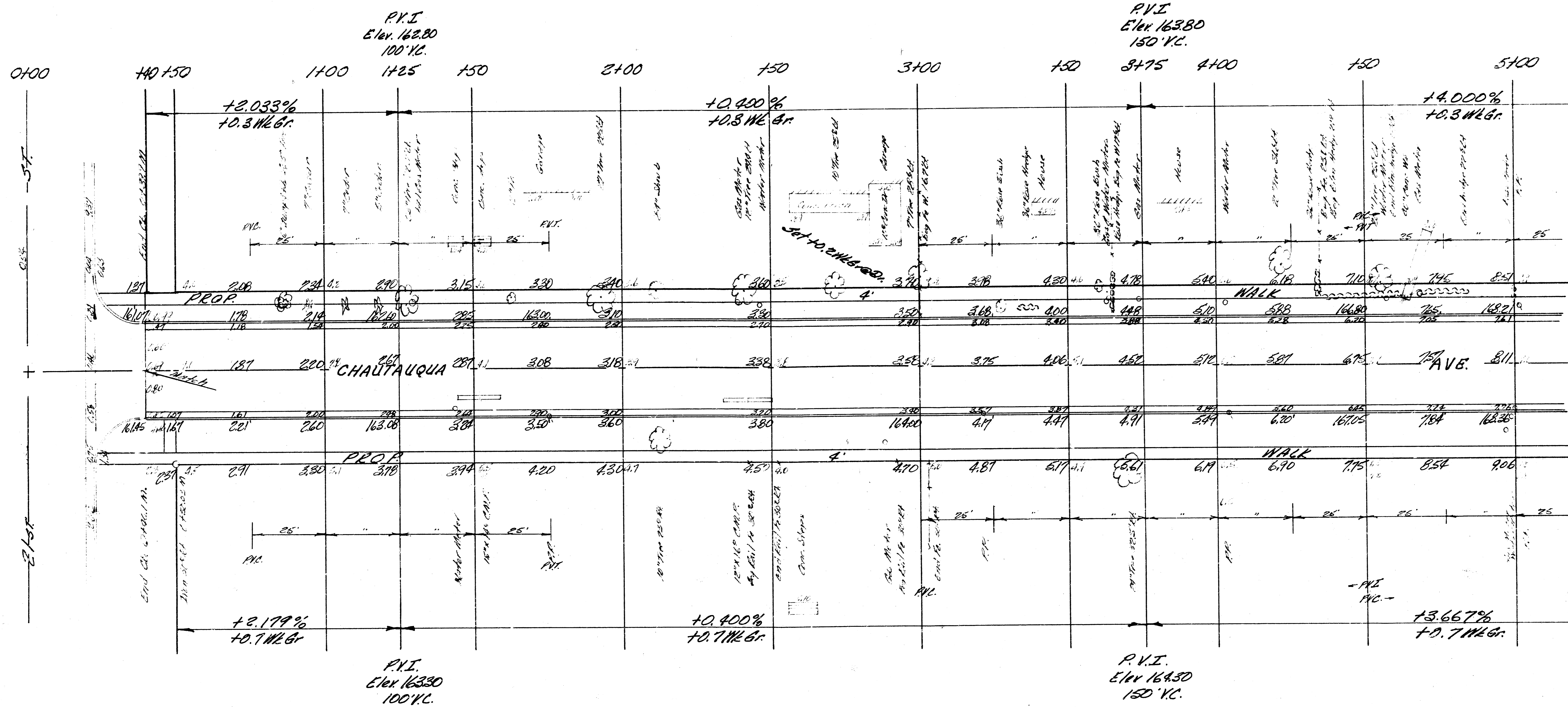
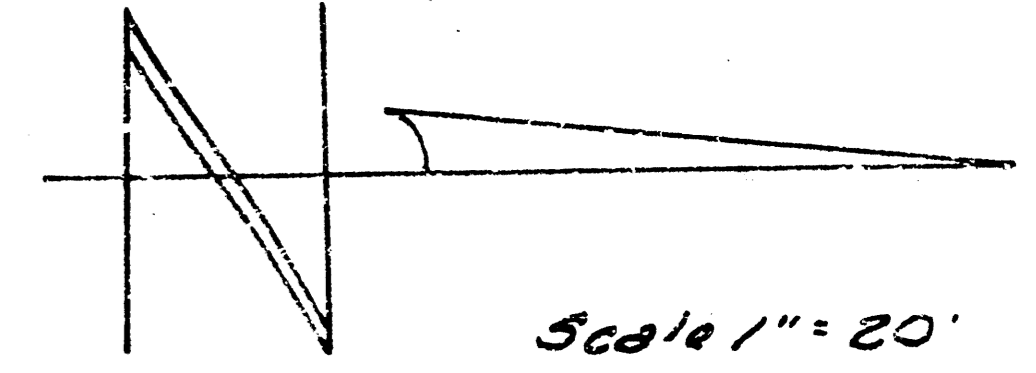
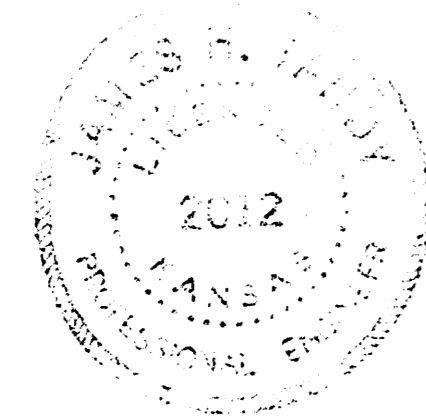


B.M 172.10 U.S.G.S. Disc. on S.E. Cor. 21st & Hillside
 B.M 161.41 " " Cut Top E Curb Chautauqua @ N.L. 21st.

NOTE TO FIELD ENGR. & CONTRACTOR
 Grade Parkings & Clear Right of Way for Prop
 Sidewalk. Sidewalk to be Constructed By
 Others.



Baseline 30' W of E. R.



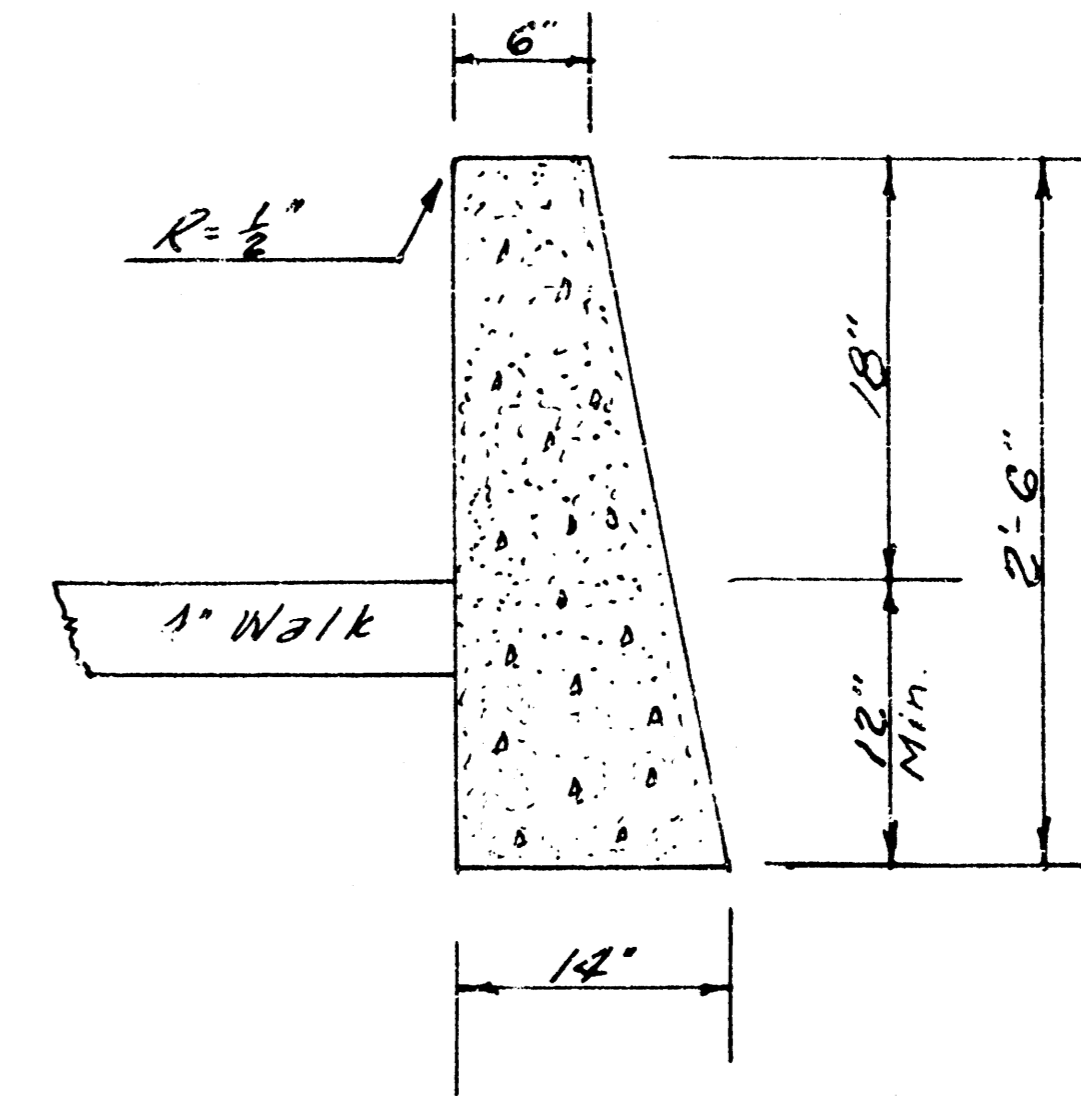
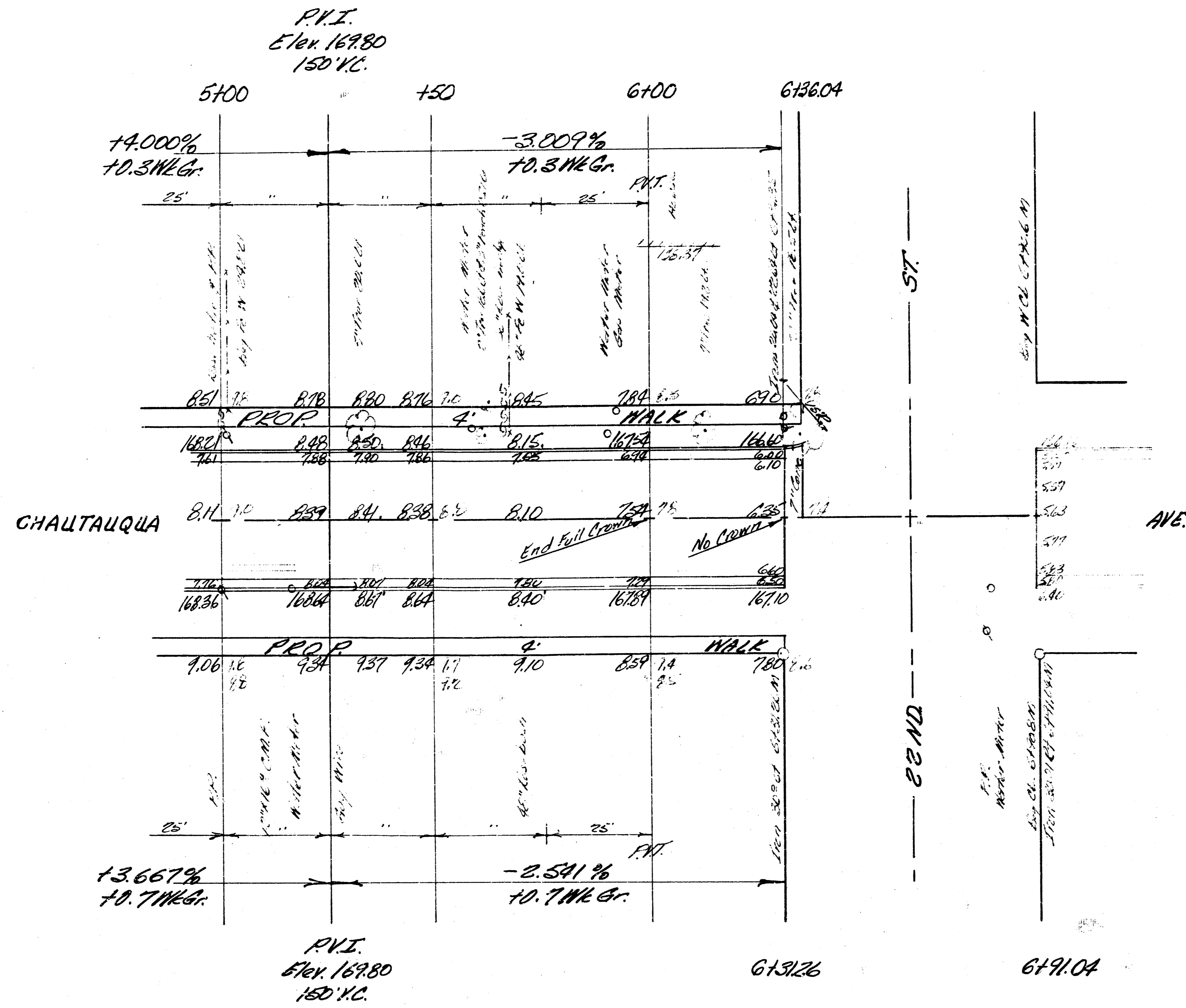
EXCAVATION	
Prop	City
1,533.8 CY	14.9 CY
153.4 +10%	1.5 +10%
1,687.2 CY Total	16.4 CY Total

COMP. FILL	
Prop	City
1.2 CY	0.1 +10%
1.5 CY Total	

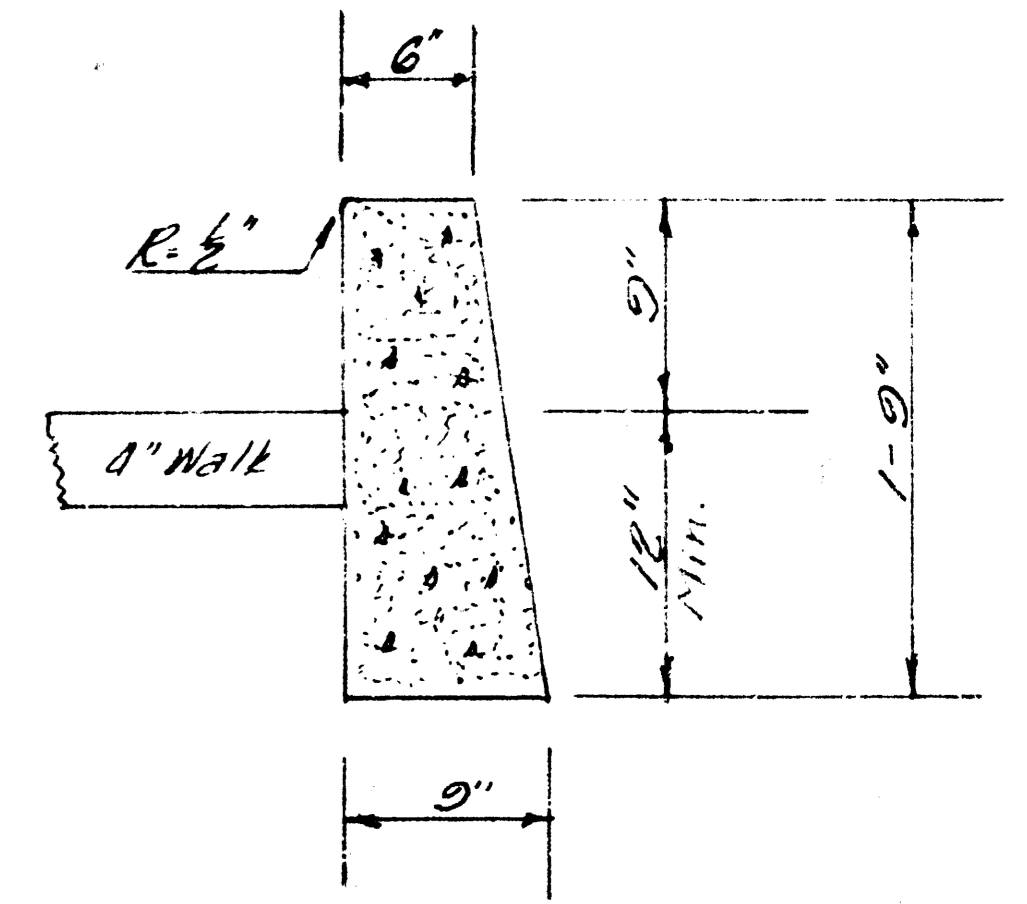
CHAUTAUQUA AVE.
 N.L. 21st. To S.L. 22nd
 26' - 2' - 30' A.C.
 CITY OF WICHITA, KANSAS
 B.E. SMITH CITY ENGINEER
 DATE: JUNE 17, 1960 PROJ. C16-1

1/4

BM 16781 SE Cor. Conc. Patch 16#2321 Chautauqua



TYPE "E"



TYPE "B"

Retaining Walls

2/4

CHAUTAUQUA AVE.
 PROJ C16-18