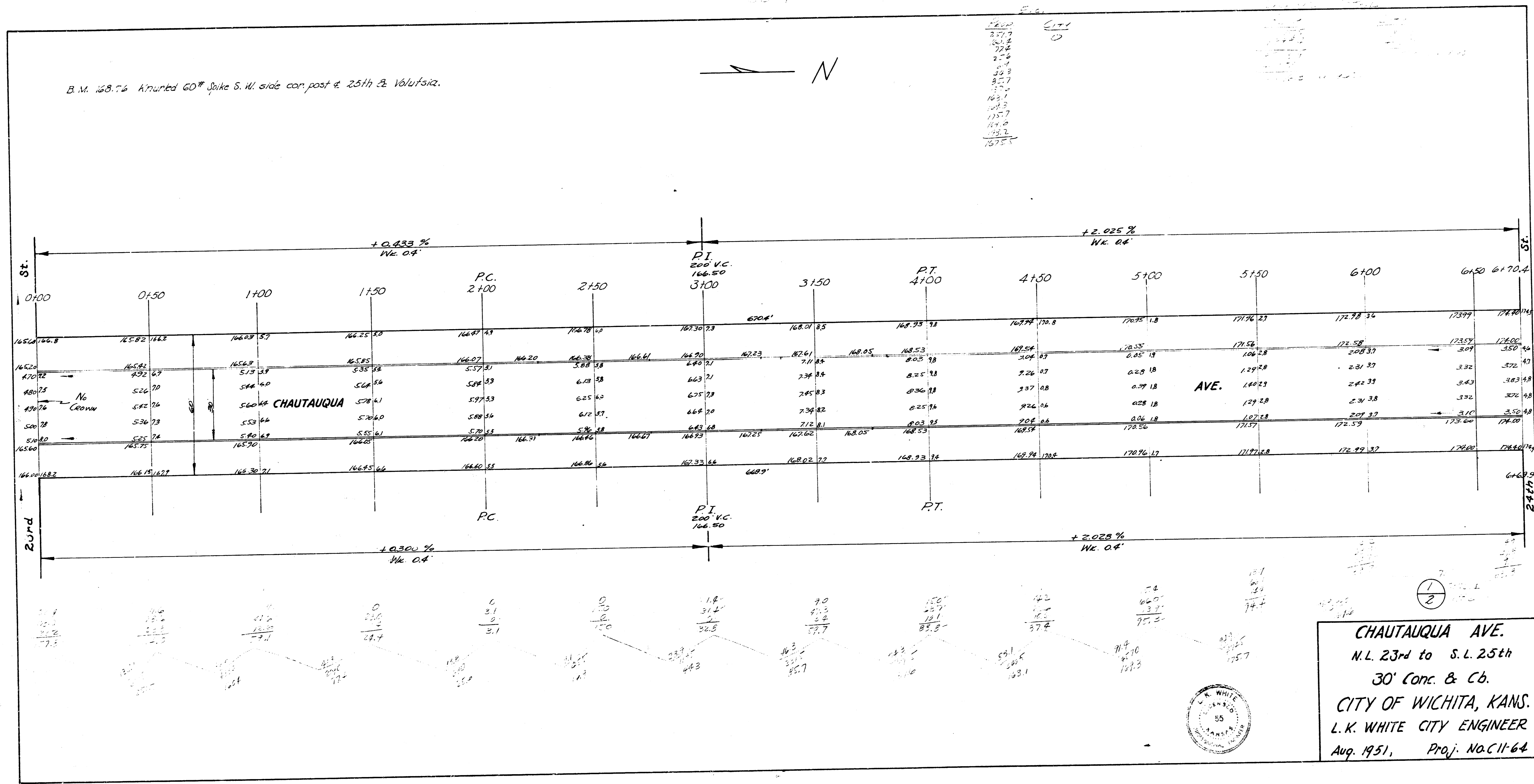


B.M. 168.76 A'unted 60' Spike S.W. side cor. post & 25th E. Volusia.

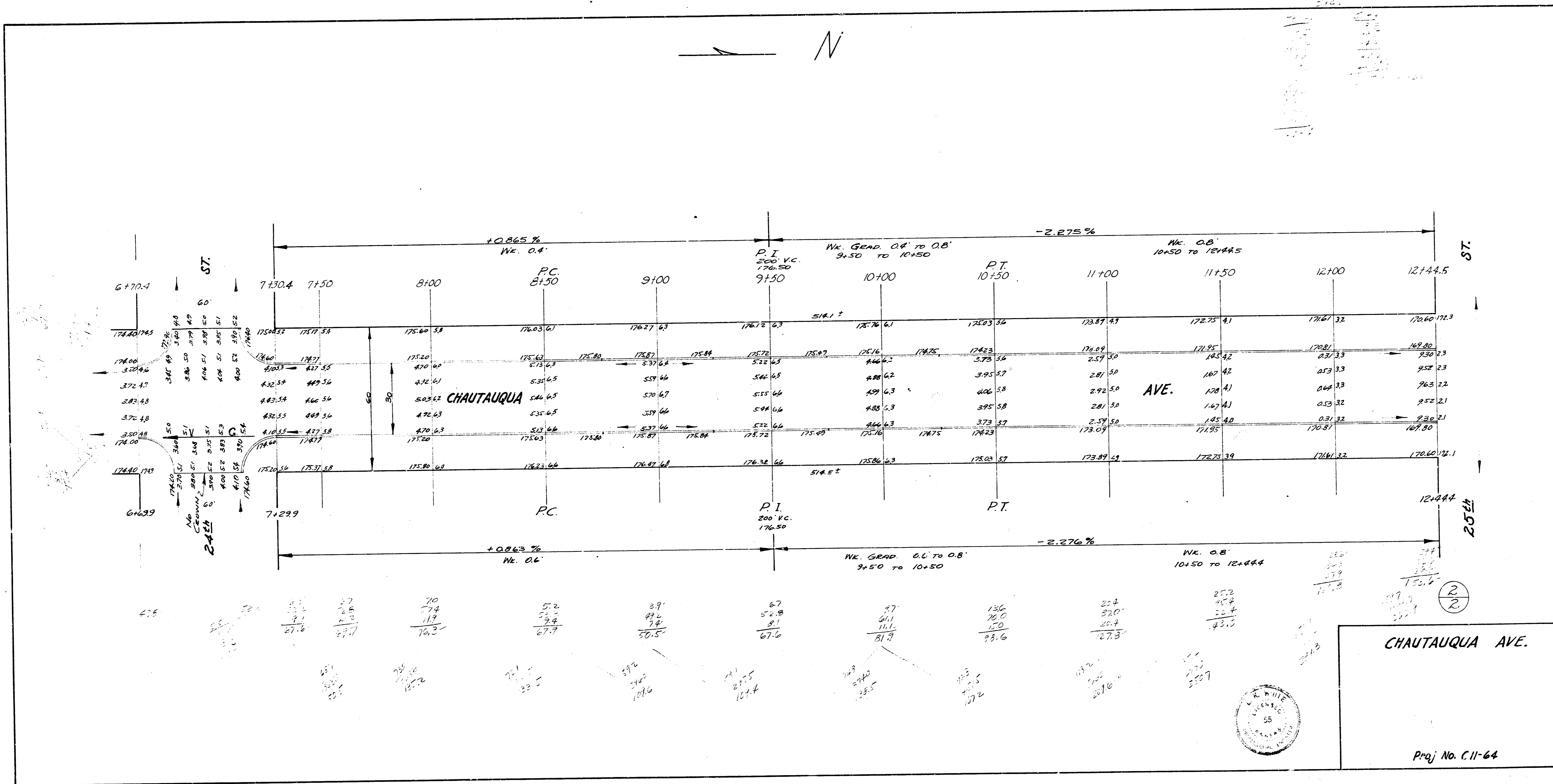
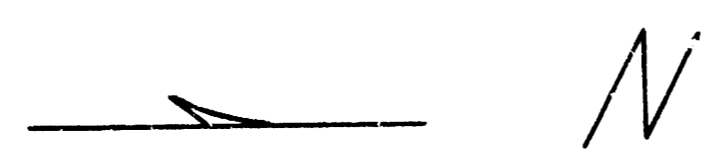


167.7
167.8
167.9
168.0
168.1
168.2
168.3
168.4
168.5
168.6
168.7
168.8
168.9
169.0
169.1
169.2
169.3
169.4
169.5



CHAUTAUQUA AVE.
N.L. 23rd to S.L. 25th
30' Conc. & Cb.
CITY OF WICHITA, KANS.
L. K. WHITE CITY ENGINEER
Aug. 1951, Proj. No. C11-64





CHAUTAUQUA AVE.

Proj No. C-11-64

