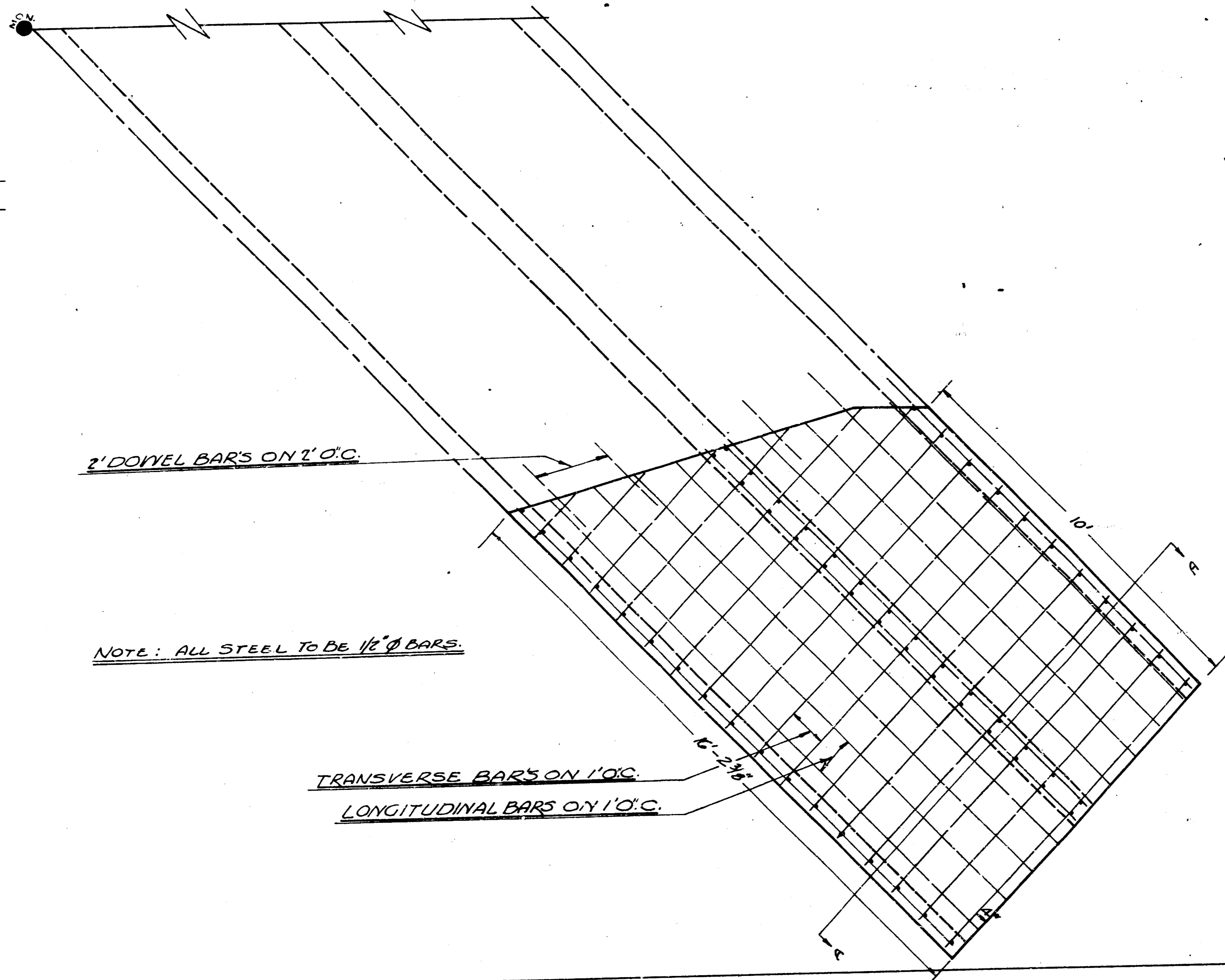
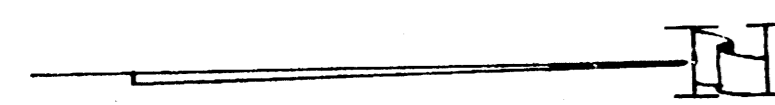


EXTENSION OF BOX CULVERT AT 11TH ST. & CHAUTAUQUA
SCALE - 1" = 2'-0"

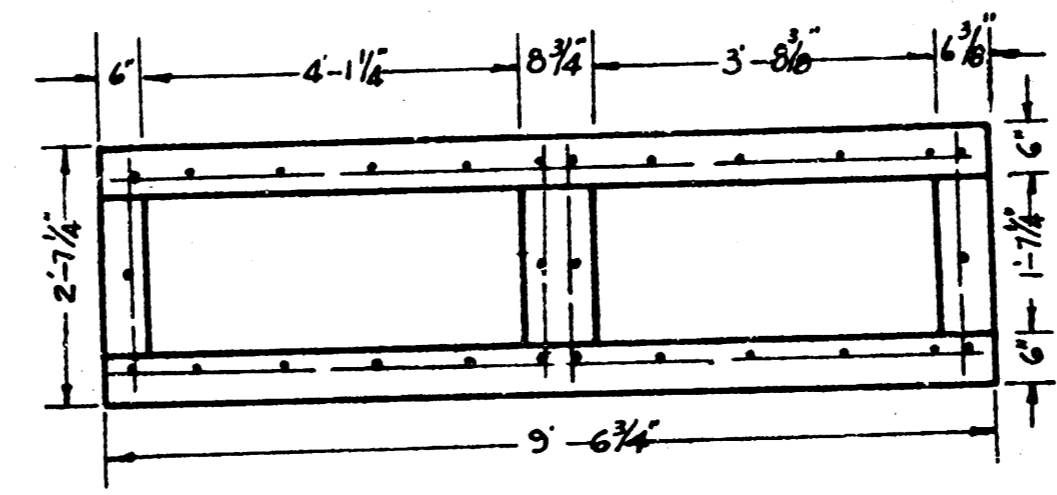


2" DOYEL BARS ON 1' O.C.

NOTE: ALL STEEL TO BE 1/2" Ø BARS.

TRANSVERSE BARS ON 1' O.C.

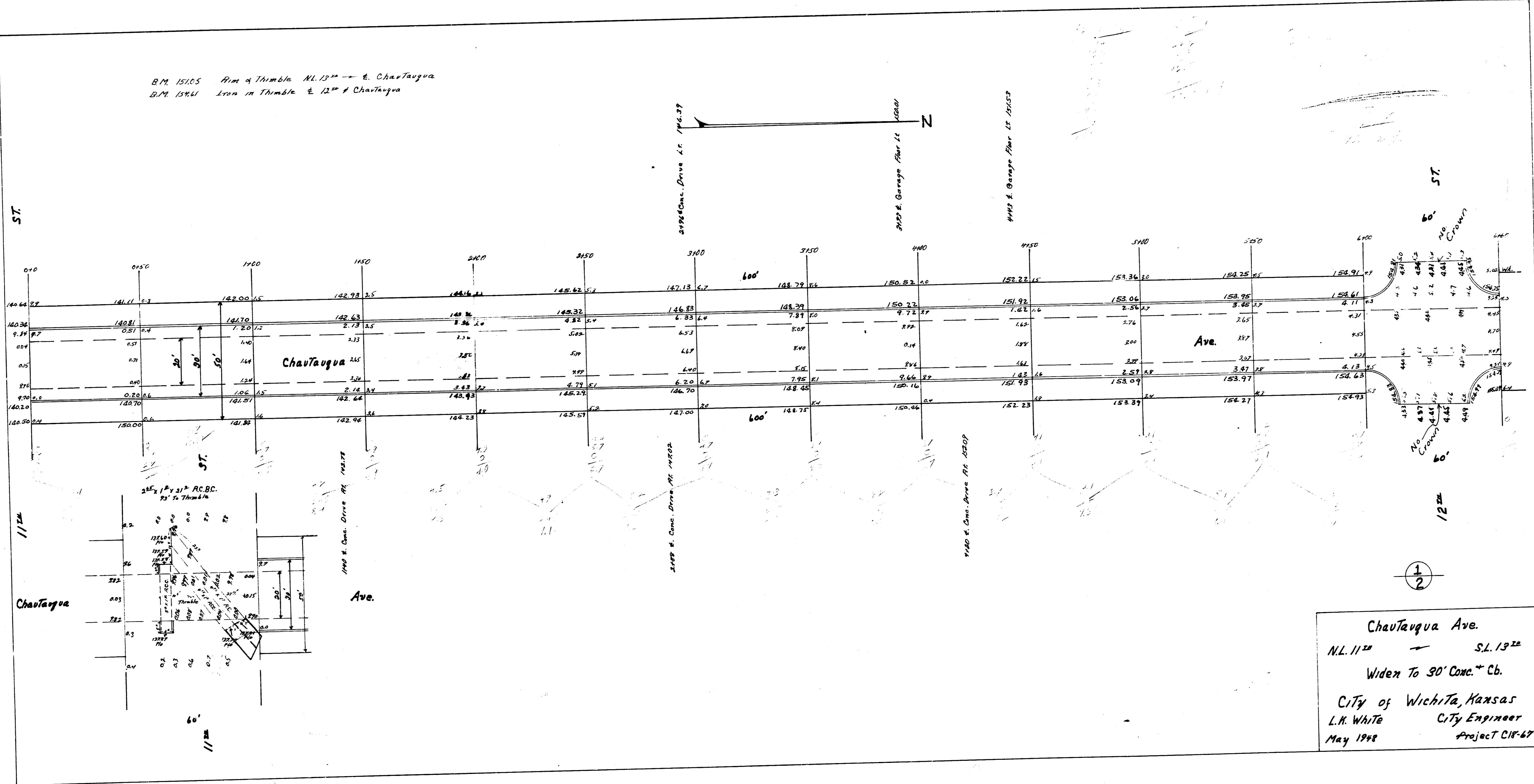
LONGITUDINAL BARS ON 1' O.C.



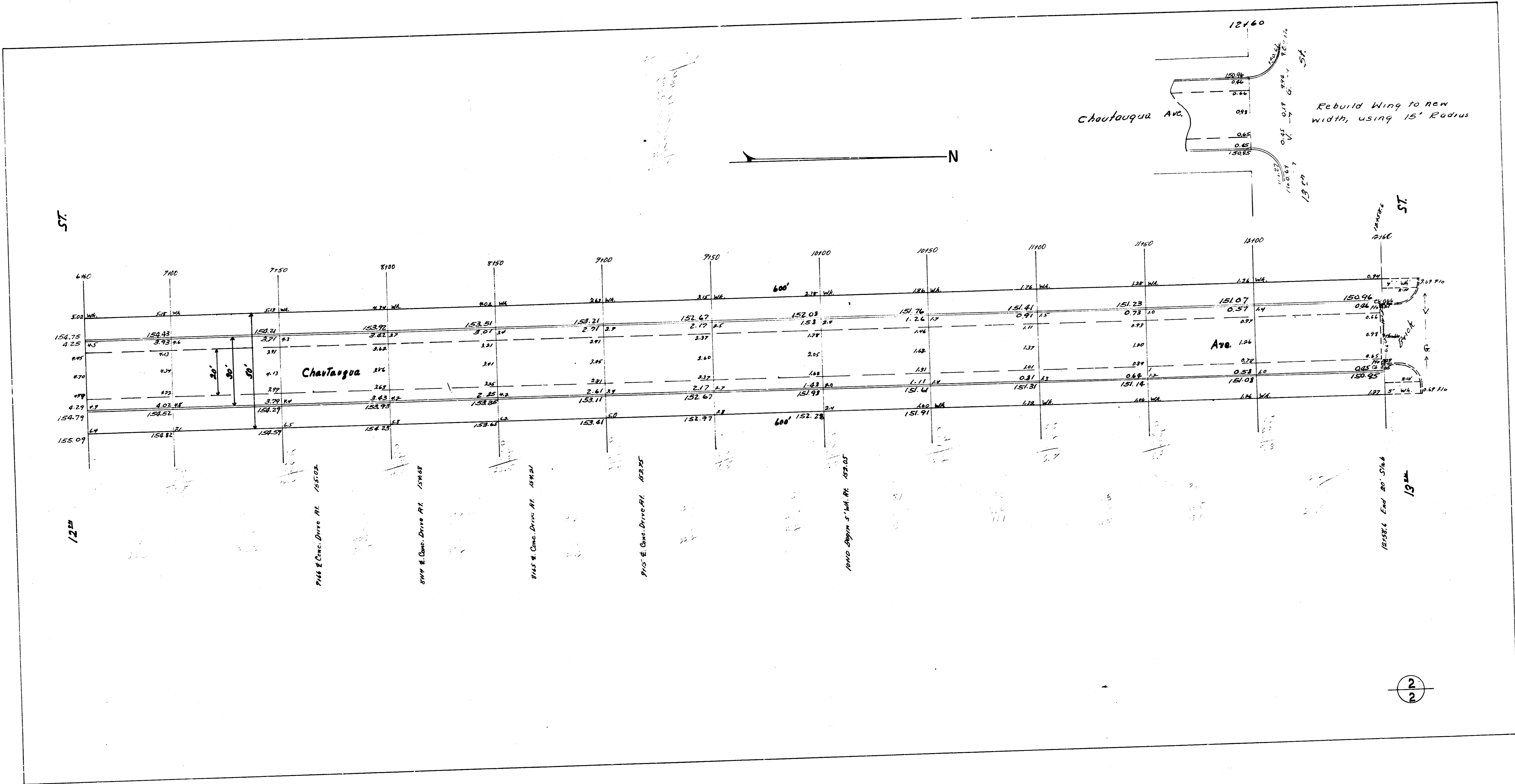
CROSS SECTION A-A

115 1/2 x 4 1/2 = 498
110
#4511
Handwritten initials

B.M. 15165 Point of Curvature N.L. 13²² - E. Chautauqua
 B.M. 15164 Iron in Thumble & 12²² - E. Chautauqua



Chautauqua Ave.
 N.L. 11²² - S.L. 13²²
 Widen To 30' Conc. Cb.
 City of Wichita, Kansas
 L.M. White City Engineer
 May 1948 Project C18-67



57

12

144 E. Canal Drive Rt. 16502

144 E. Canal Drive Rt. 16508

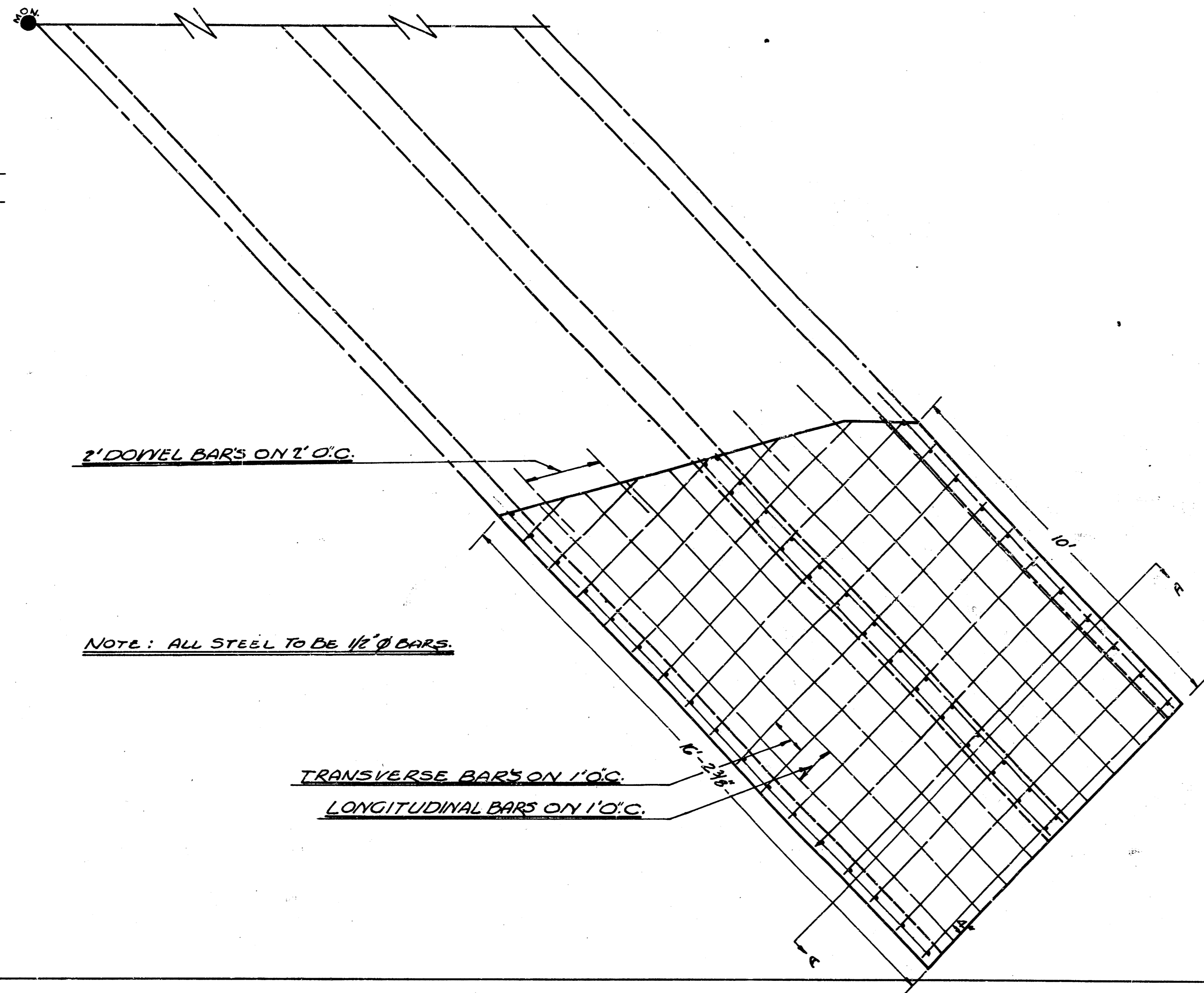
144 E. Canal Drive Rt. 16514

144 E. Canal Drive Rt. 16520

144 E. Canal Drive Rt. 16526

2

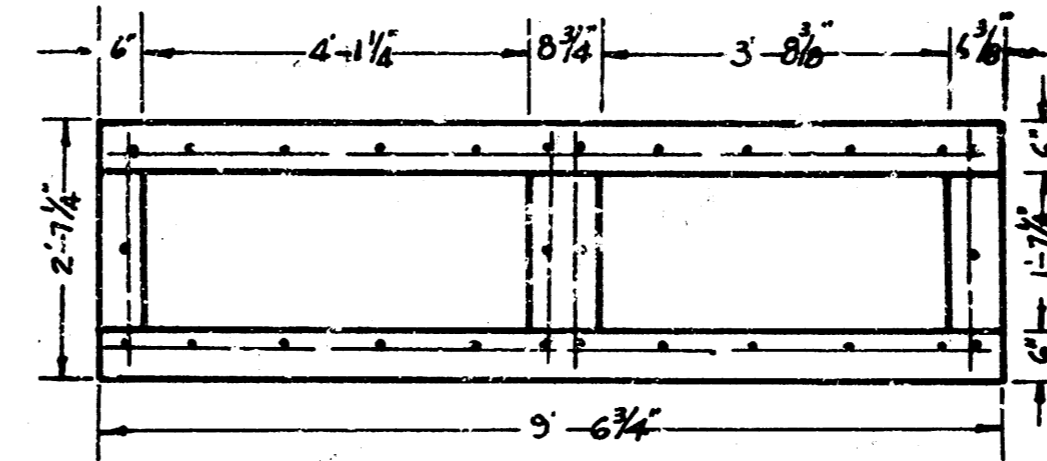
EXTENSION OF BOX CULVERT AT 11TH ST. & CHAUTAUQUA
 SCALE - 1" = 2'-0"



2" DOWEL BARS ON 1' O.C.

NOTE: ALL STEEL TO BE 1/2" Ø BARS.

TRANSVERSE BARS ON 1' O.C.
 LONGITUDINAL BARS ON 1' O.C.



CROSS SECTION A-A

615 1/2" x 2" x 2" = 4198
 10' x 10' = 100
 79518