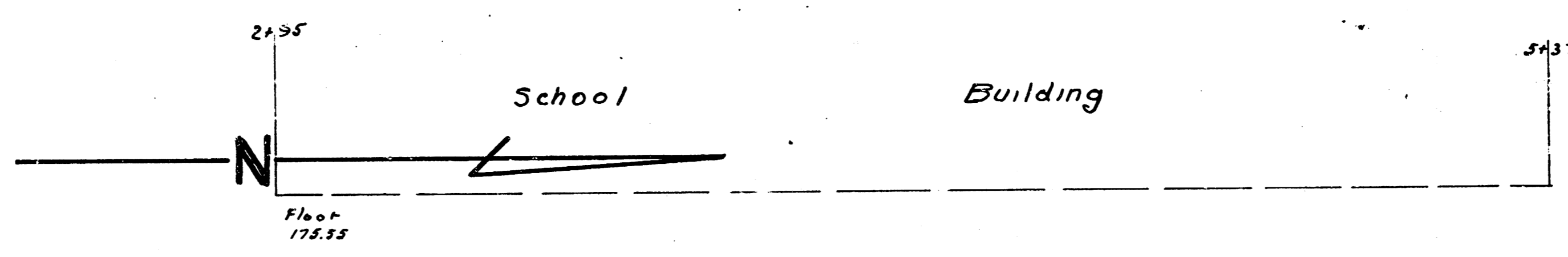
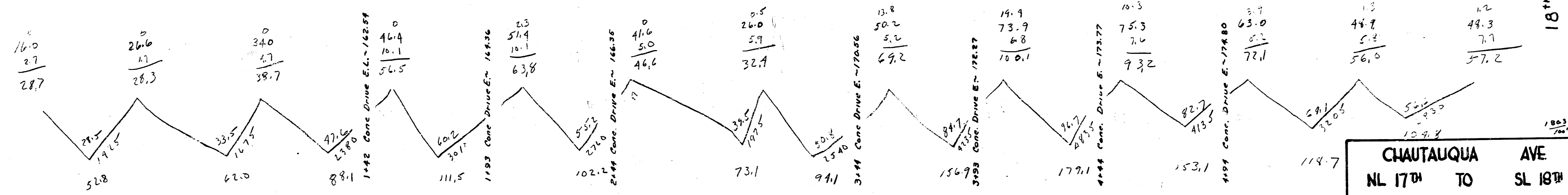
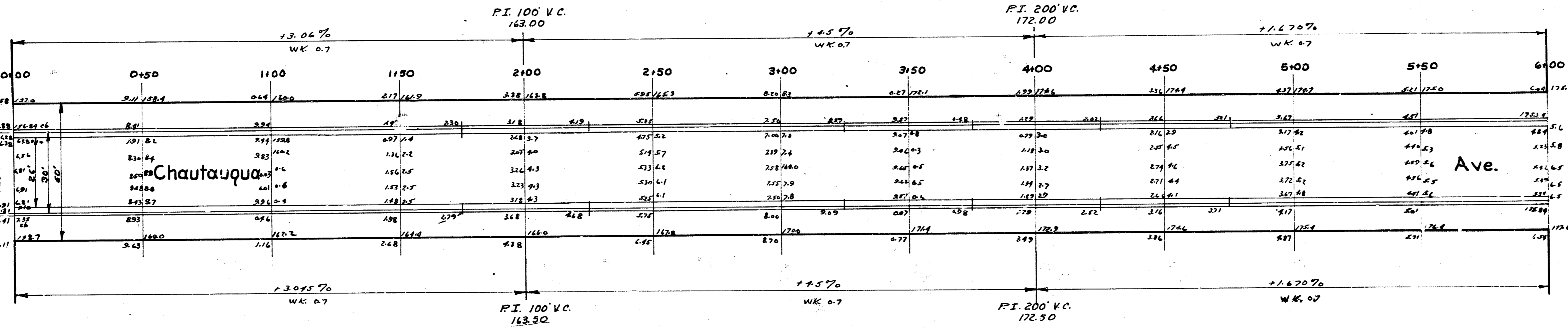


B.M. 17657 S rim thimble & Hillside of 17th.
 B.M. 16666 P in Fitchie N. of 17th E. end radius E.S. Chautauqua.
 B.M. 17741 N.W. corner concrete porch No. 1846 N. Chautauqua.



52.8	120.4
52.0	120.4
8.9	120.4
11.1	120.4
102.2	120.4
73.1	120.4
94.1	120.4
150.7	120.4
178.1	120.4
153.1	120.4
118.7	120.4
124.3	120.4
1296.7	120.4
+107.5	120.4
1426.0	120.4

17th St.



CHAUTAUQUA AVE
 NL 17th TO SL 18th
 26-2-30 ASPH. CONC.
 CITY OF WICHITA, KANS.
 LK. WHITE CITY ENGINEER
 MAY, 1950 Pro. No. CIO-37