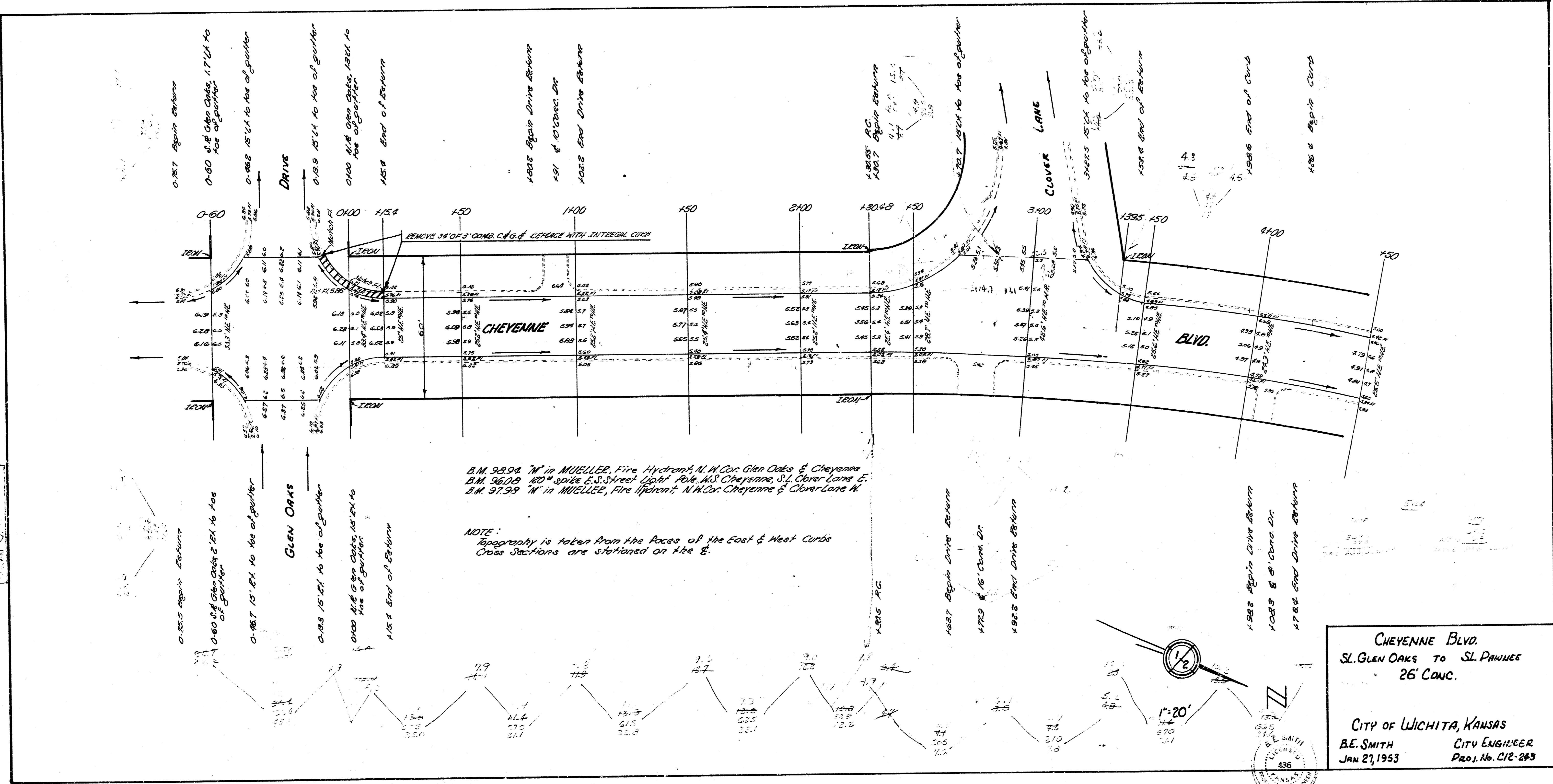


1" = 20'
 1/4" = 10'
 1/8" = 5'
 1/16" = 2.5'
 1/32" = 1.25'
 1/64" = 0.625'



B.M. 9894 "M" in MUELLER, Fire Hydrant, N.W. Cor. Glen Oaks & Cheyenne
 B.M. 9899 "M" in E.S. Street Light Pole, N.E. Cor. Cheyenne, St. Clover Lane &
 B.M. 9799 "M" in MUELLER, Fire Hydrant, N.W. Cor. Cheyenne & Clover Lane W.

NOTE:
 Spot heights are taken from the faces of the East & West Curbs
 Cross Sections are stationing on the E.

CHEYENNE BLVD.
 ST. GLEN OAKS TO ST. PAWNEE
 26' CONC.
 CITY OF WICHITA, KANSAS
 B.E. SMITH CITY ENGINEER
 JAN 21, 1953 Proj. No. C12-243

