

BM. 163.95 "X" in W. rim of M.H. 6' E. 1' 45" SE of Vet. Hosp. fence cor.

Exc.

PROP

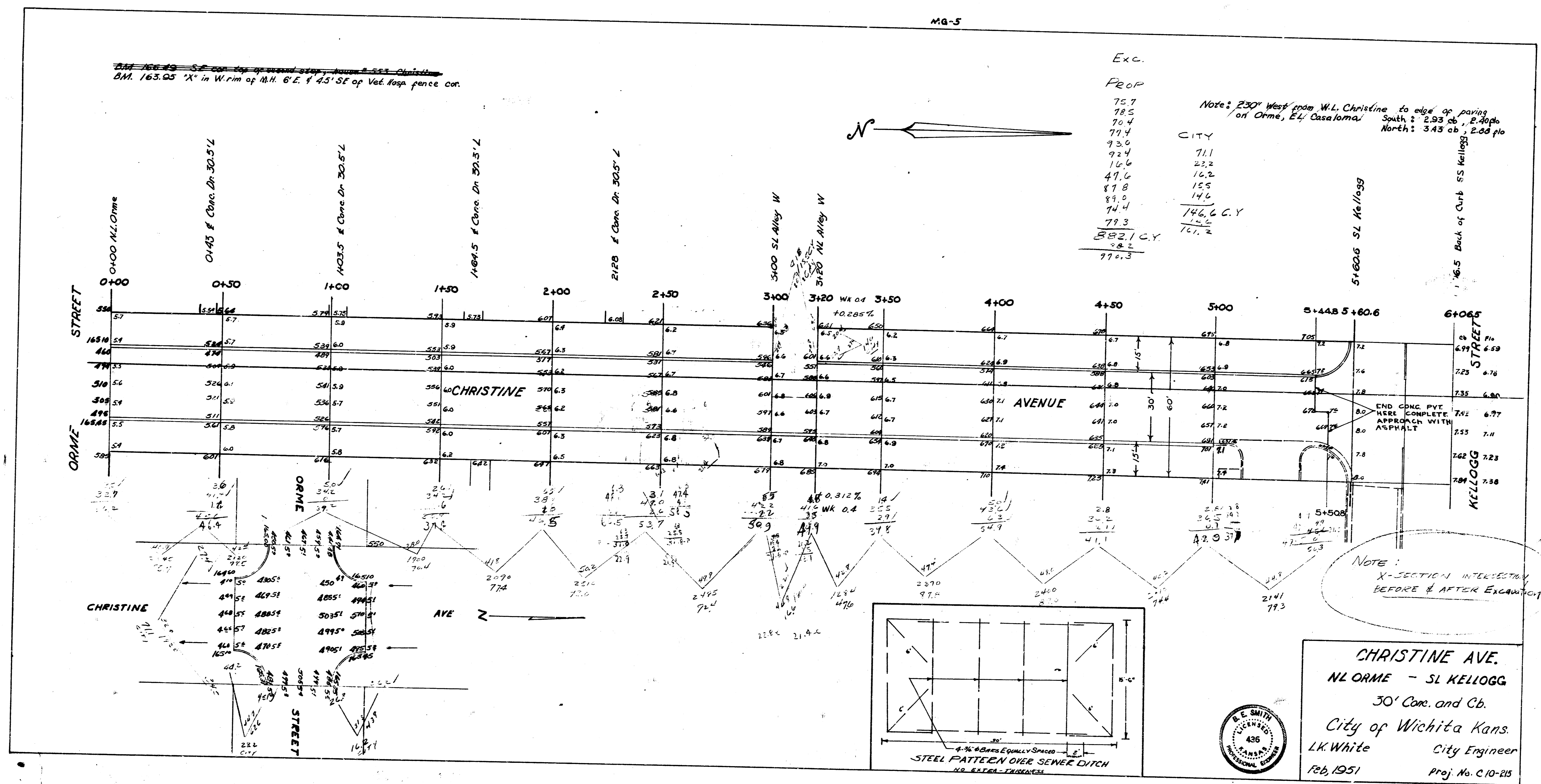
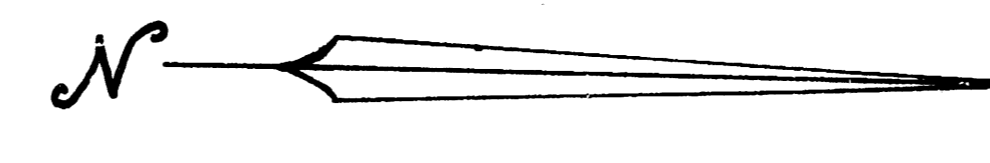
75.7
78.5
70.4
71.4
73.6
72.4
10.6
47.6
87.8
89.0
74.4
79.3
582.1 C.Y.
88.2
770.3

Notes: 250' West from W.L. Christine to edge of paving
on Orme, E.L. Casaloma

South: 2.83 cu. yds.
North: 3.43 cu. yds.

CITY

711
232
162
155
146
146.6 C.Y.
761.2



NOTE:
X-SECTION INTERSECTION
BEFORE & AFTER EXCAVATION

CHRISTINE AVE.
NL ORME - SL KELLOGG
30' Cor. and Cb.
City of Wichita Kans.
L.K. White City Engineer
Feb, 1951 Proj. No. C-10-215

