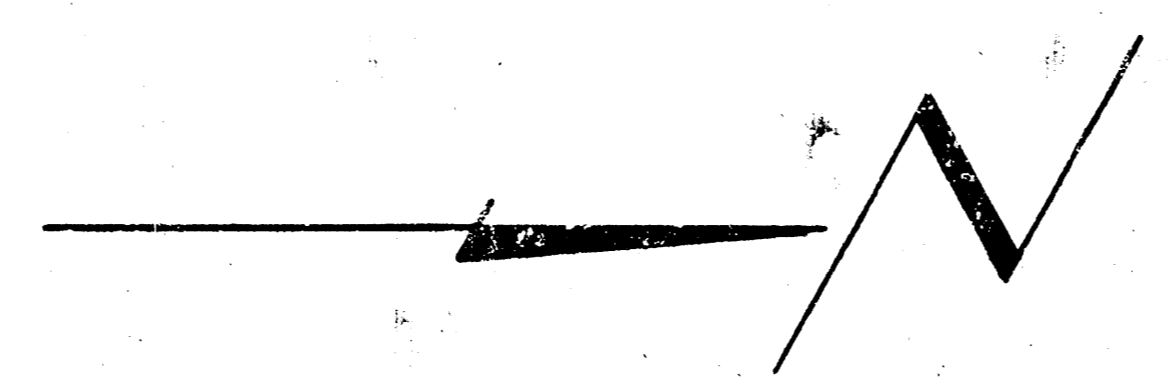
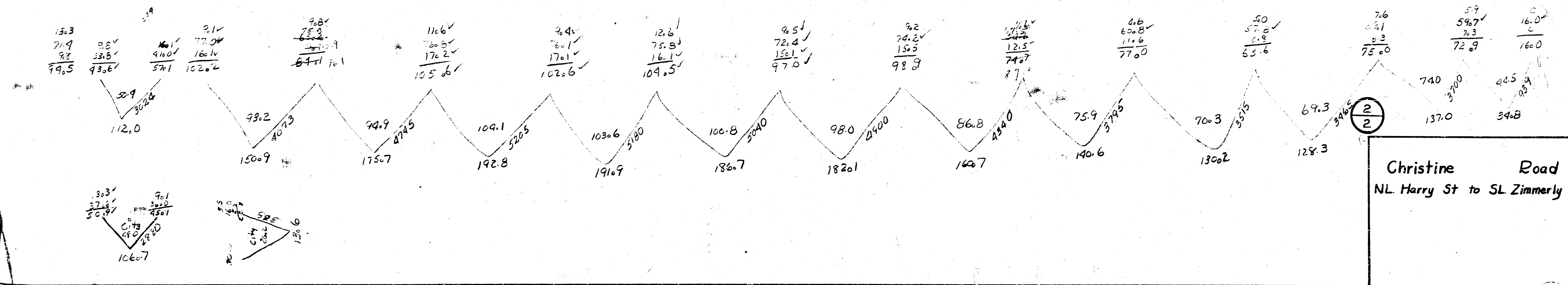
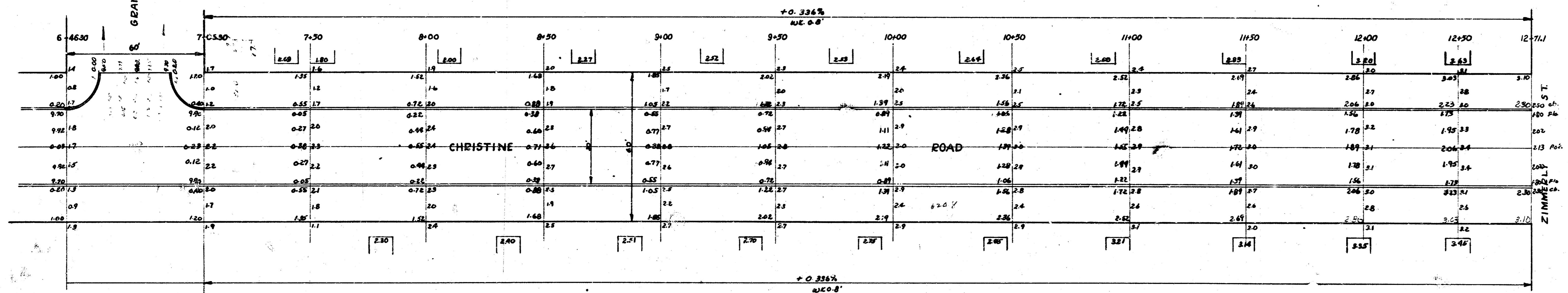


| Property | City  |
|----------|-------|
| 112.0    | 106.7 |
| 150.9    | 13.1  |
| 175.7    | 120.3 |
| 192.8    |       |
| 199.9    |       |
| 186.7    |       |
| 182.1    |       |
| 160.7    |       |
| 140.6    |       |
| 130.2    |       |
| 126.3    |       |
| 127.0    |       |
| 34.8     |       |
| 1225.7   |       |



BM. 153.31 SE corner of concrete porch Hs# 1145 Christine.

BM. 156.03 SE corner concrete porch Ho. # 1053 Christine.



Christine Road  
NL Harry St to SL Zimmerly St

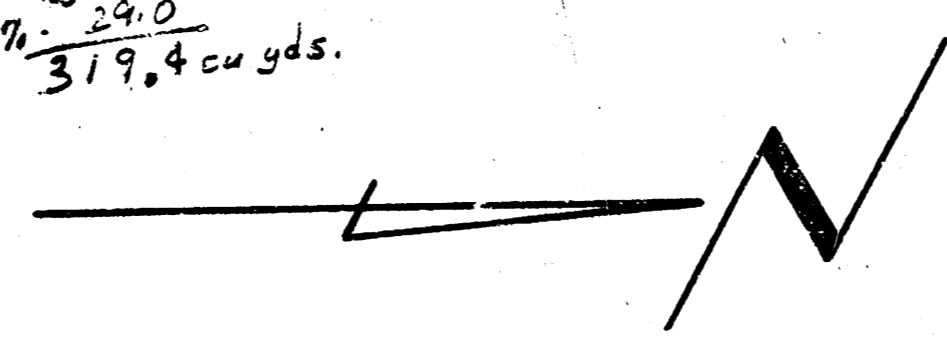
4 e s 58

M.G. 5

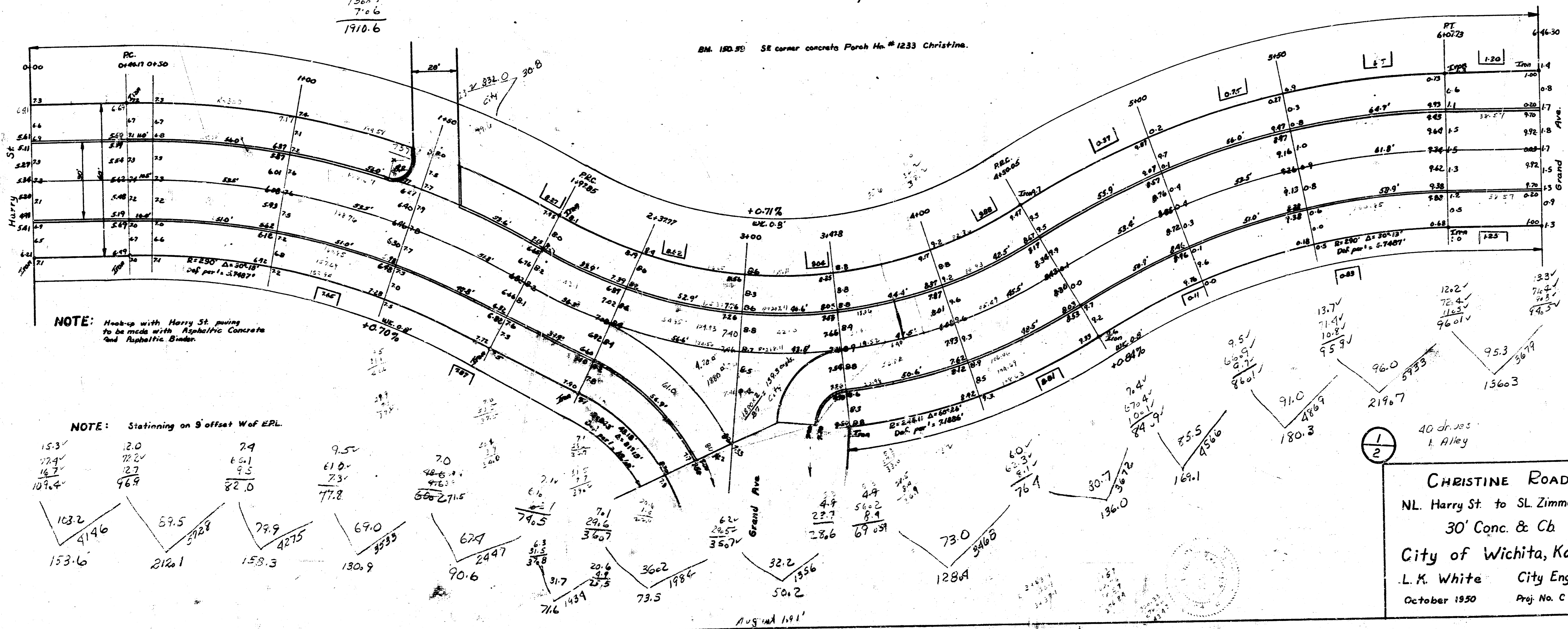
BM. 146.88 Standard SW corner Edgemoor & Harry

| Property |
|----------|
| 153.6    |
| 212.1    |
| 158.3    |
| 130.9    |
| 70.6     |
| 730.5    |
| 500.2    |
| 1280.4   |
| 1500.0   |
| 1670.1   |
| 1800.3   |
| 2190.7   |
| 1300.3   |
| 710.6    |
| 1910.6   |

| Property       | Total         | City          |
|----------------|---------------|---------------|
| 1910.6         | 120.3         | 120.3         |
| 1929.7         | 150.3         | 150.3         |
| 3839.3         | 30.8          | 30.8          |
| 3839.3         | 290.4         | 290.4         |
| +10%           | 29.0          | 29.0          |
| 4217.7 cu yds. | 319.4 cu yds. | 319.4 cu yds. |



BM. 180.95 SE corner concrete Parsh No. # 1233 Christine.



NOTE: Hook-up with Harry St paving to be made with Asphaltic Concrete and Asphaltic Binder.

NOTE: Stationing on S offset W of ERL.

|       |       |       |       |       |
|-------|-------|-------|-------|-------|
| 15.3  | 2.0   | 7.9   | 9.5   | 7.0   |
| 12.4  | 12.2  | 6.1   | 7.3   | 48.1  |
| 4.7   | 2.7   | 9.5   | 7.3   | 47.2  |
| 107.4 | 96.9  | 82.0  | 77.8  | 560.2 |
| 103.2 | 59.5  | 79.9  | 69.0  | 67.9  |
| 414.6 | 302.8 | 427.5 | 353.3 | 244.7 |
| 153.6 | 212.1 | 158.3 | 130.9 | 90.6  |
|       |       |       |       | 31.7  |
|       |       |       |       | 716   |
|       |       |       |       | 148.9 |
|       |       |       |       | 73.5  |
|       |       |       |       | 362   |
|       |       |       |       | 198.6 |
|       |       |       |       | 32.2  |
|       |       |       |       | 501.2 |
|       |       |       |       | 128.4 |
|       |       |       |       | 73.0  |
|       |       |       |       | 346.8 |
|       |       |       |       | 76.4  |
|       |       |       |       | 30.7  |
|       |       |       |       | 130.0 |
|       |       |       |       | 169.1 |
|       |       |       |       | 85.5  |
|       |       |       |       | 450.0 |
|       |       |       |       | 91.0  |
|       |       |       |       | 180.3 |
|       |       |       |       | 219.7 |
|       |       |       |       | 96.0  |
|       |       |       |       | 573.3 |
|       |       |       |       | 136.3 |
|       |       |       |       | 95.3  |
|       |       |       |       | 361.9 |
|       |       |       |       | 12.2  |
|       |       |       |       | 71.4  |
|       |       |       |       | 11.3  |
|       |       |       |       | 96.0  |
|       |       |       |       | 94.3  |

**CHRISTINE ROAD**  
 N.L. Harry St to S.L. Zimmerman St  
 30' Conc. & Ch  
 City of Wichita, Kansas  
 L. K. White City Engineer  
 October 1950 Proj. No. C10-174

August 1951 Aug 21 1951 Aug 21 1951