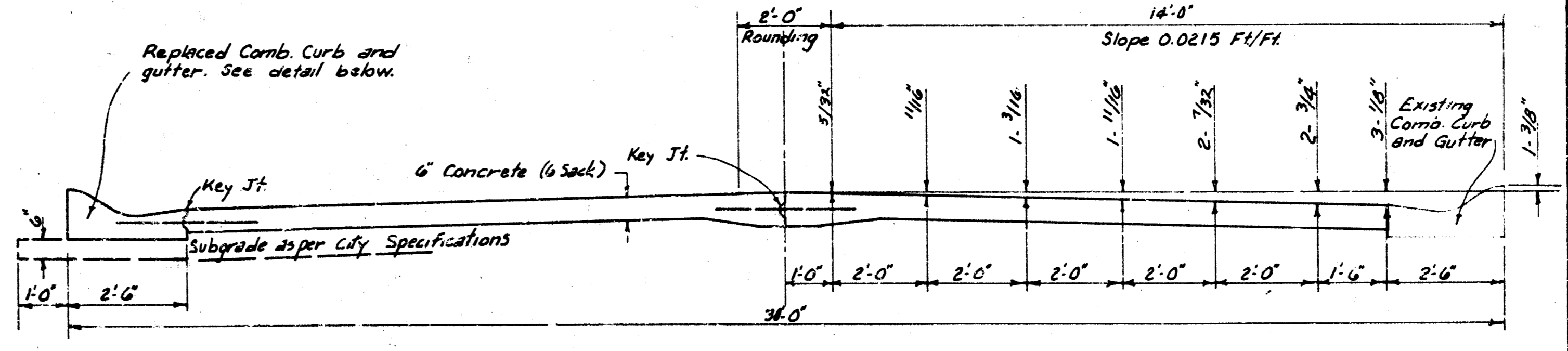
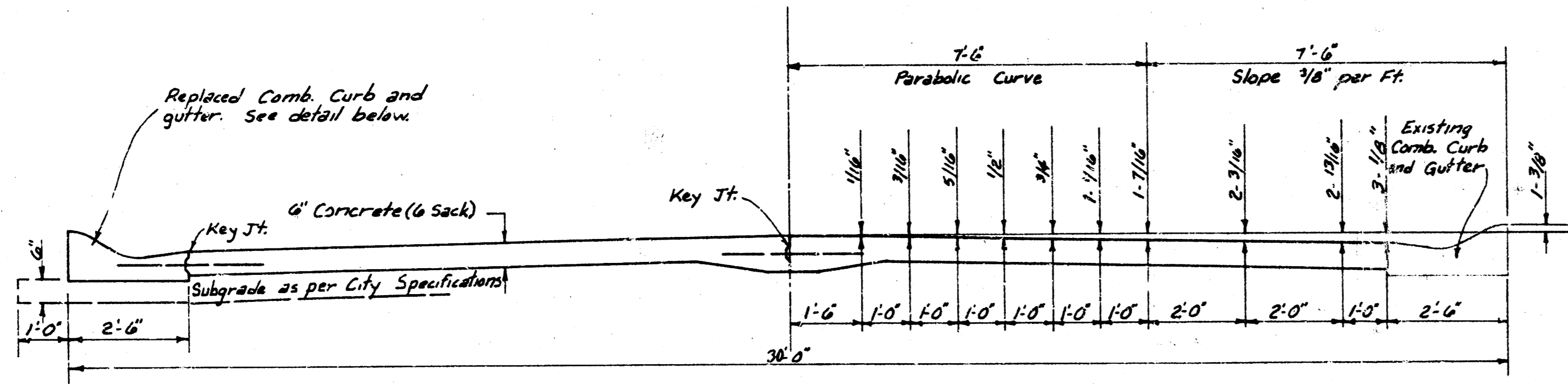
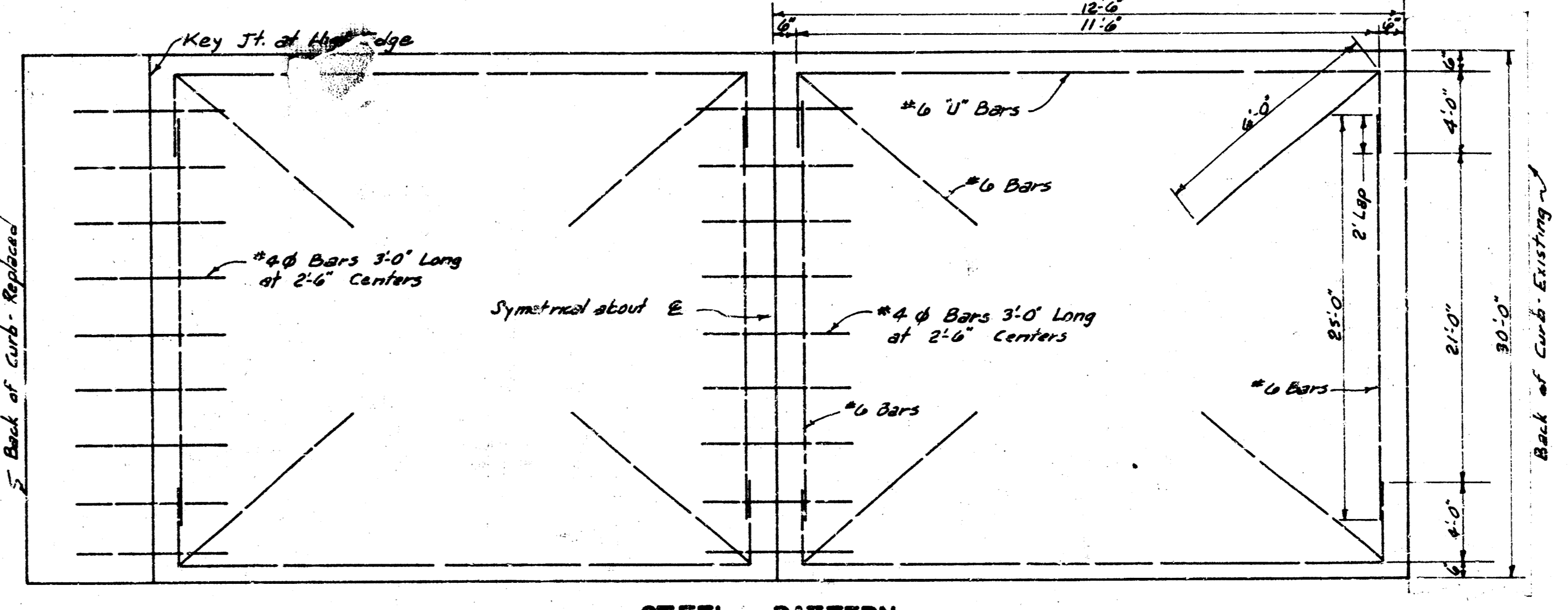
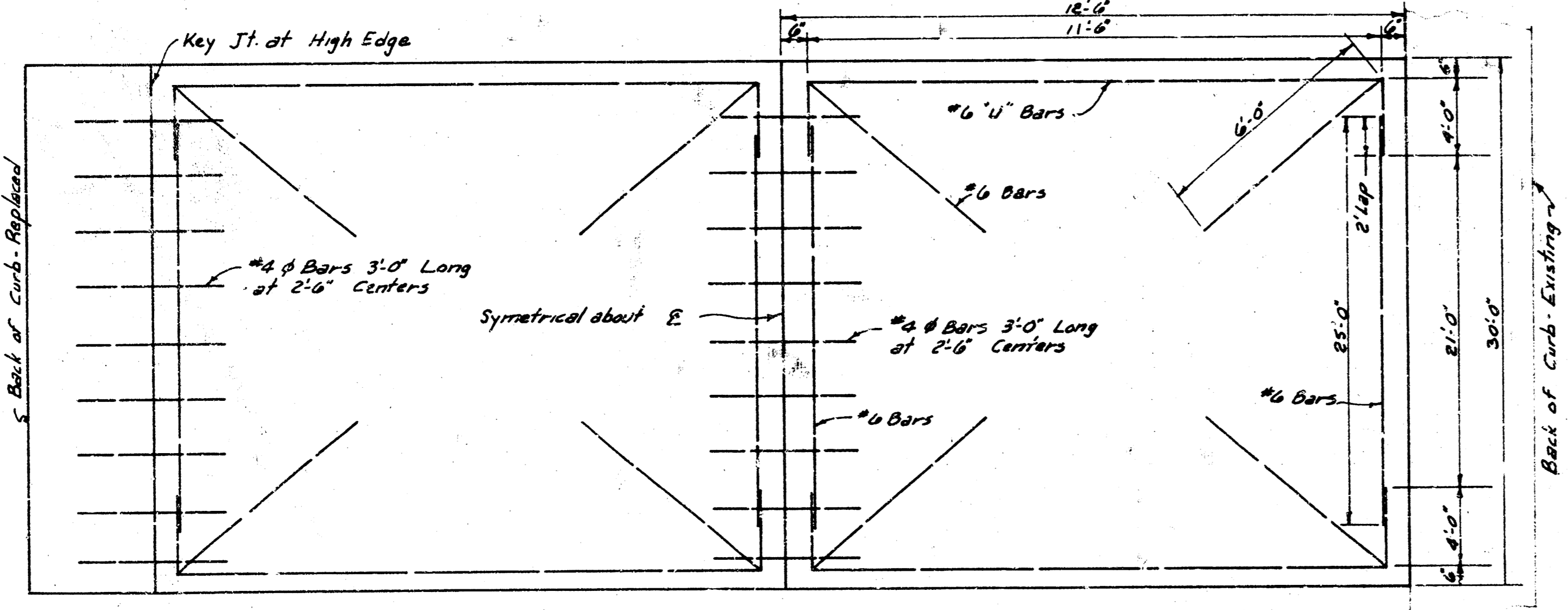


CHRISTY PLACE
W.L. BLUFF TO W.L. FOUNTAIN
6" CONC. PAVEMENT WITH COMB.
CURB & GUTTER WHERE NECESSARY
DATE: PROJ. NO. DAKS573073



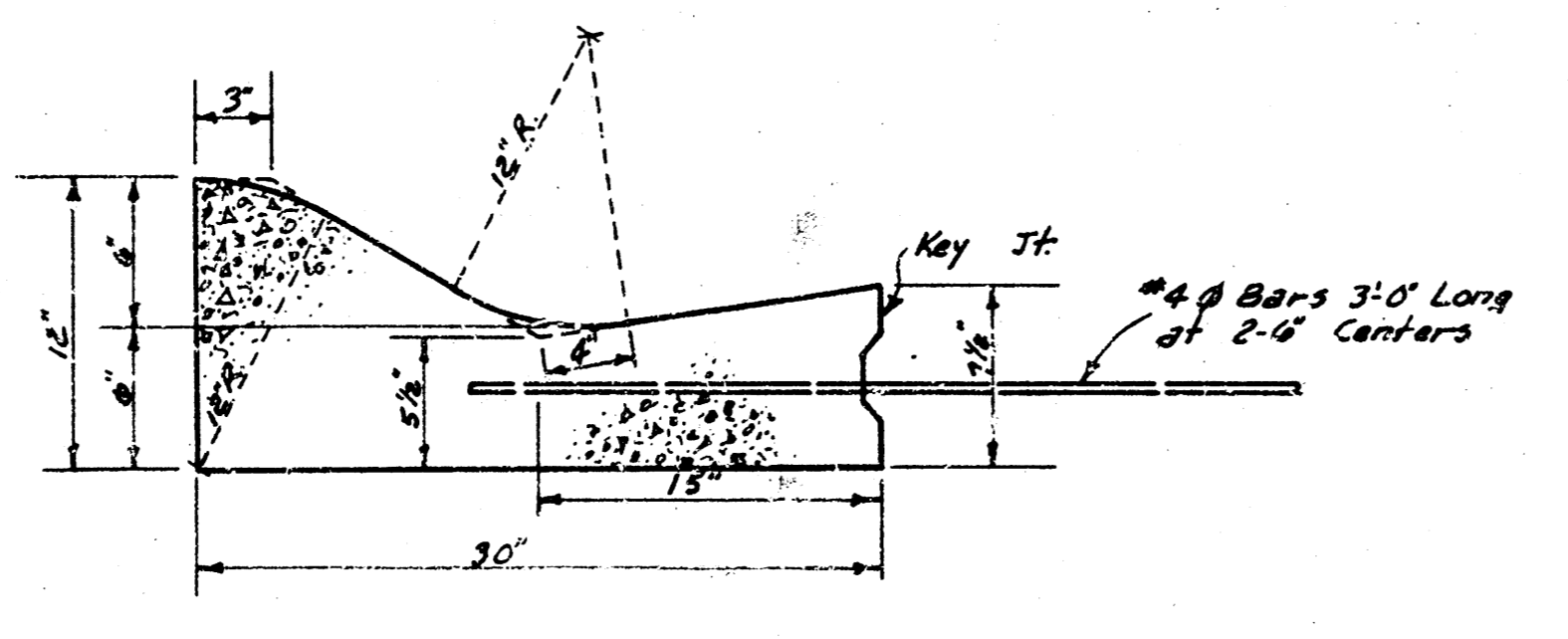
TYPICAL SECTION WITH STANDARD CROWN

TYPICAL SECTION WITH ALTERNATE CROWN

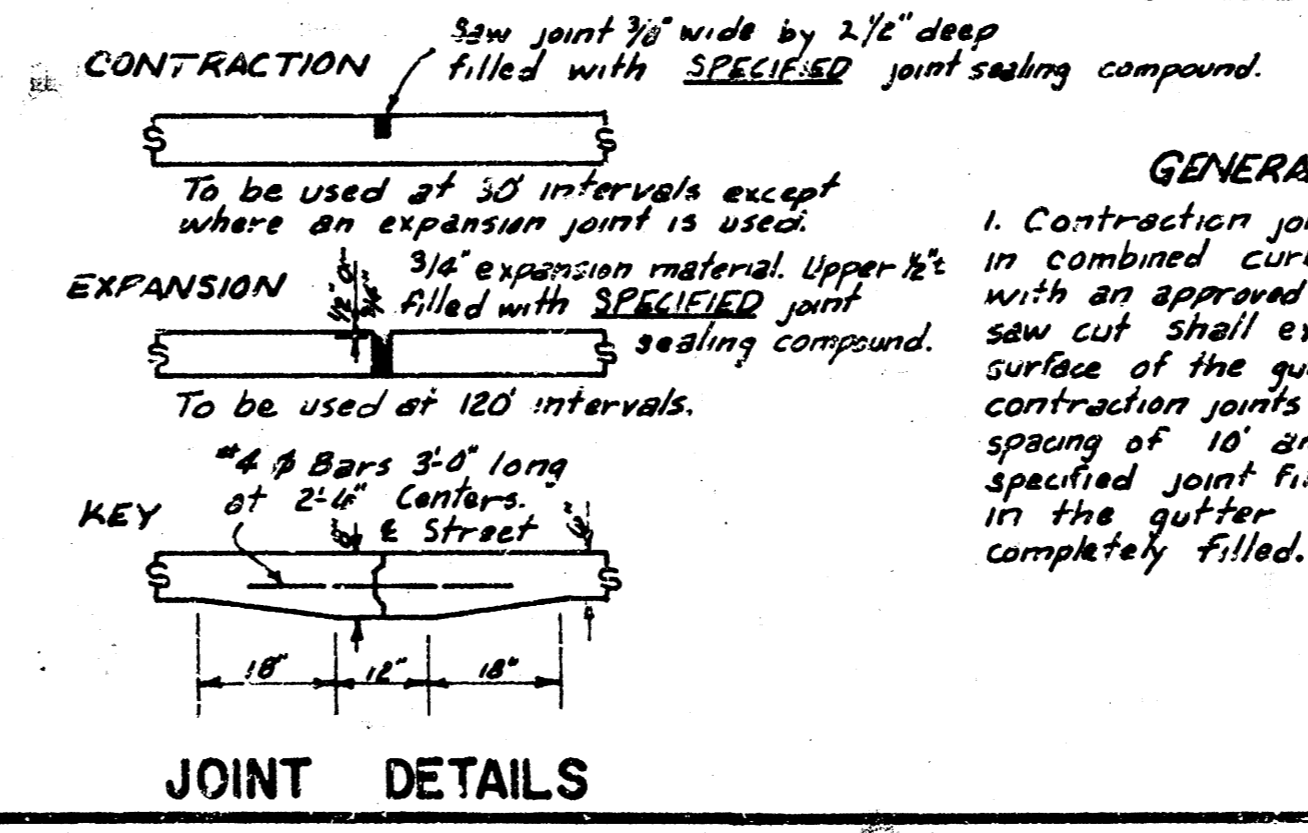


STEEL PATTERN

STEEL PATTERN



DETAIL OF SPECIAL COMB. CURB & GUTTER



JOINT DETAILS

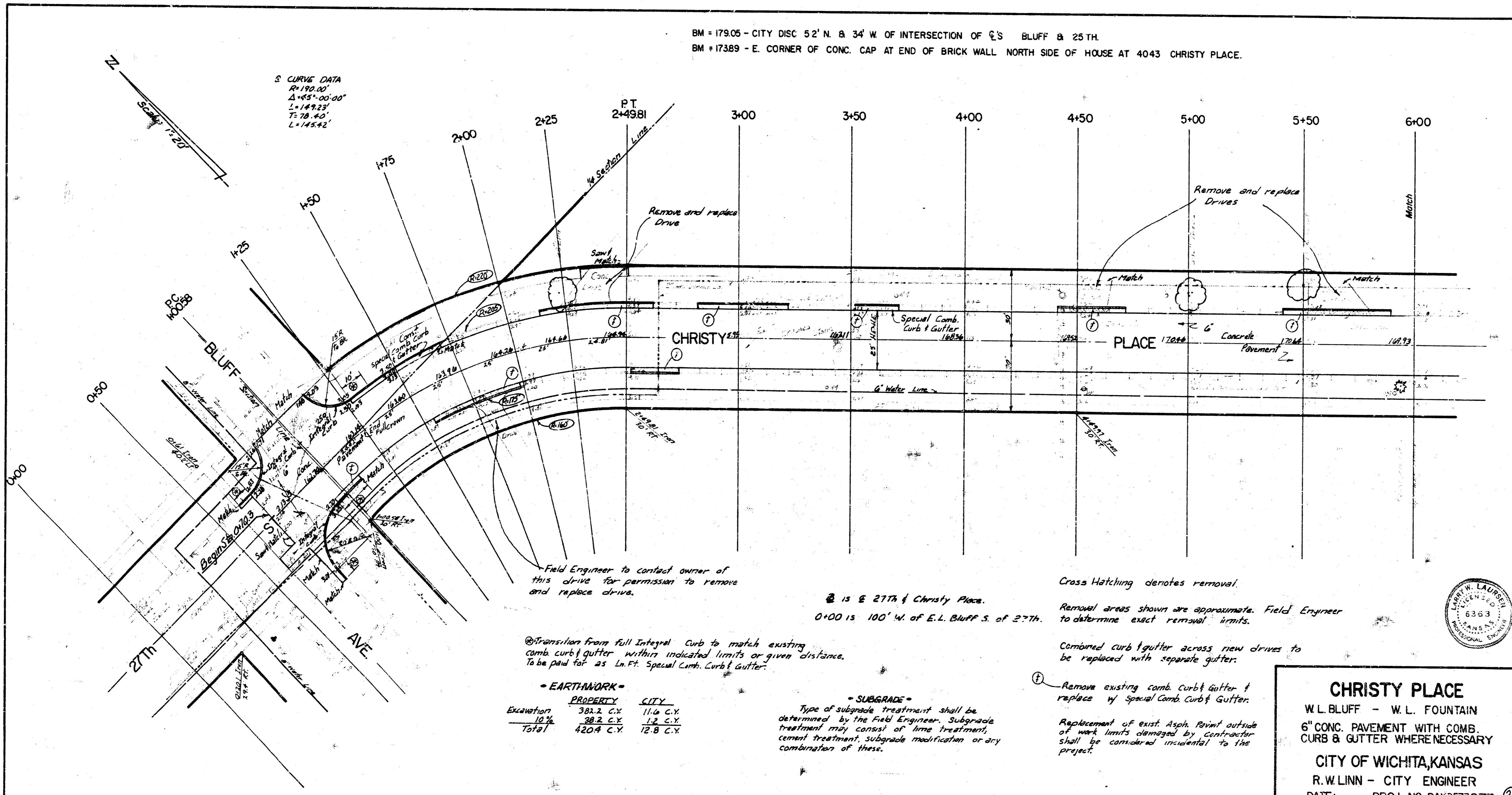
GENERAL NOTES
1. Contraction joints may be constructed in combined curb and gutter by sawing with an approved concrete saw. The saw cut shall extend 2-1/2" below the surface of the gutter and curb. Sawed contraction joints shall have a maximum spacing of 10' and be filled with a specified joint filler, such that the joint in the gutter section will be completely filled.



CITY OF WICHITA, KANSAS
R. W. LINN
CITYENGINEER

BM = 179.05 - CITY DISC 52' N. & 34' W. OF INTERSECTION OF E'S BLUFF & 25TH.
 BM = 173.89 - E. CORNER OF CONC. CAP AT END OF BRICK WALL NORTH SIDE OF HOUSE AT 4043 CHRISTY PLACE.

S CURVE DATA
 R=182.40'
 Δ=45°00'00"
 L=149.23'
 T=78.40'
 L=145.92'



Surveyed by
 R. W. Linn
 City Engineer

Field Engineer to contact owner of this drive for permission to remove and replace drive.

② is E 27th & Christy Place.
 0+00 is 100' W. of E.L. Bluff S. of 27th.

① Transition from full integral curb to match existing comb curb & gutter within indicated limits or given distance. To be paid for as Ln. Ft. Special Comb. Curb & Gutter.

- EARTHWORK -

	PROPERTY	CITY
Excavation	382.2 C.Y.	11.6 C.Y.
10%	38.2 C.Y.	1.2 C.Y.
Total	420.4 C.Y.	12.8 C.Y.

- SUBGRADE -
 Type of subgrade treatment shall be determined by the Field Engineer. Subgrade treatment may consist of lime treatment, cement treatment, subgrade modification or any combination of these.

Cross Hatching denotes removal.

Removal areas shown are approximate. Field Engineer to determine exact removal limits.

Combined curb & gutter across new drives to be replaced with separate gutter.

① Remove existing comb curb & gutter & replace w/ special comb curb & gutter.

Replacement of exist. Asphalt outside of work limits damaged by contractor shall be considered incidental to the project.



CHRISTY PLACE
 W.L. BLUFF - W.L. FOUNTAIN
 6" CONC. PAVEMENT WITH COMB. CURB & GUTTER WHERE NECESSARY
 CITY OF WICHITA, KANSAS
 R. W. LINN - CITY ENGINEER
 DATE: PROJ. NO. DAK3573073 (2)

North
Scale: 1"=20'

E CURVE DATA
 R: 190.00'
 Δ: 26°00'00"
 L: 86.22'
 T: 43.81'
 C: 85.44'

