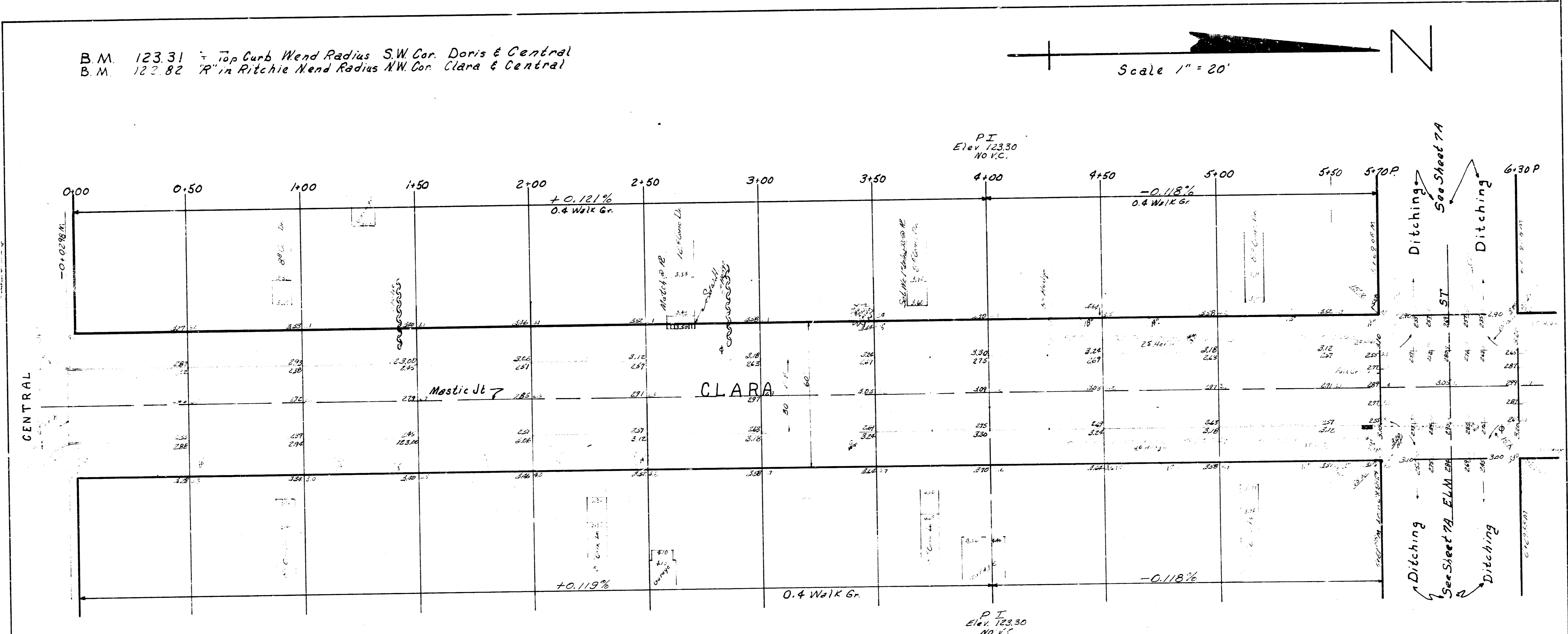
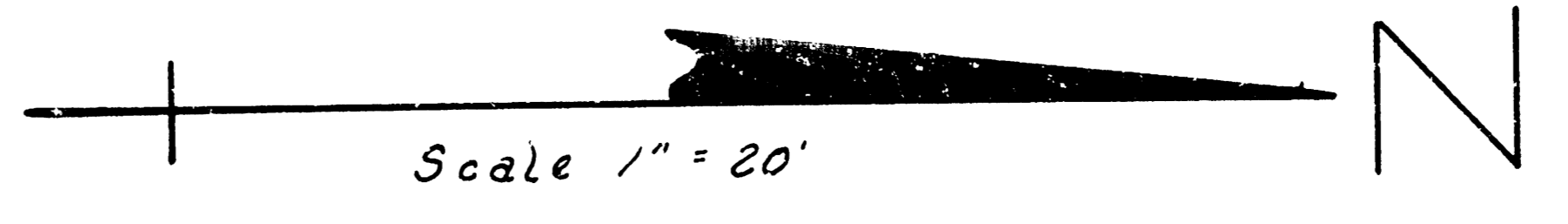
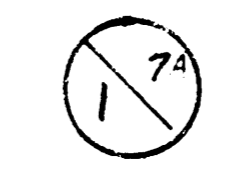


B.M. 123.31 Top Curb Wend Radius S.W. Cor. Doris & Central
 B.M. 123.82 7" in Ritchie Wend Radius N.W. Cor. Clara & Central

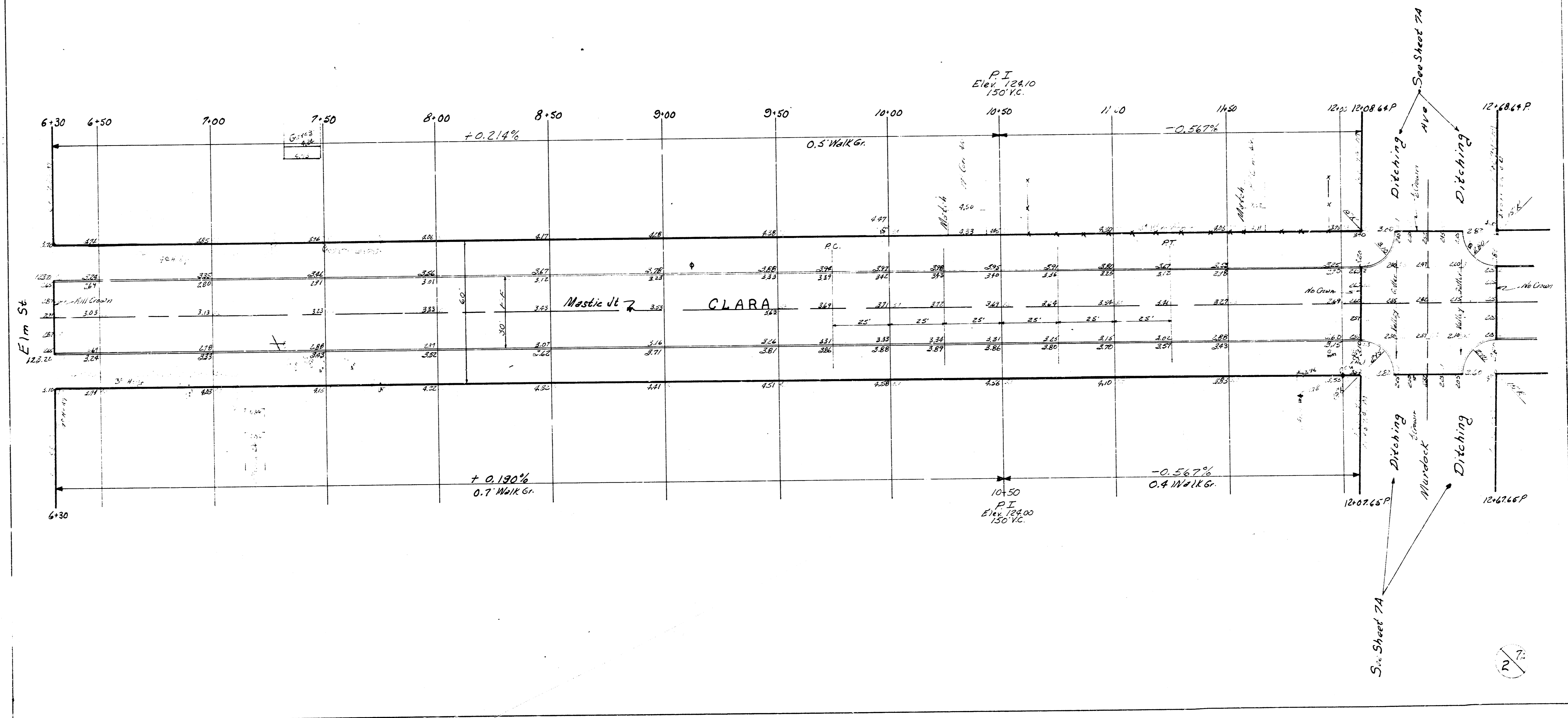
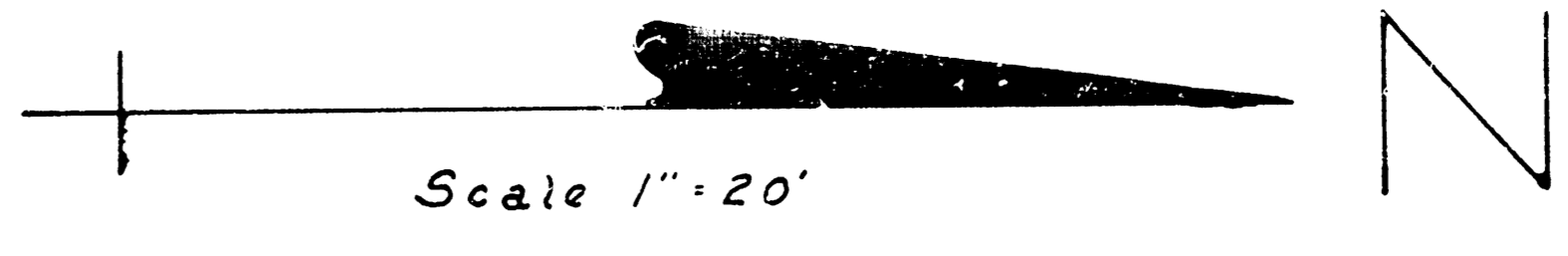


	Excavation	Property	City
Cu Yds	3252.1	498.1	
+ 10%	3577.3	547.9	
Total	3577.3	547.9	

CLARA
 N.L. CENTRAL TO S.L. NINTH
 30' CONC. & CB.
 CITY OF WICHITA, KANSAS
 B.E. SMITH CITY ENGINEER
 DATE April, 1968 PROJ. C12-68



B.M. 123.80 NW Cor. of a Walk Running N to S in Front of Church then E on SE. Cor. Clara & Murdock

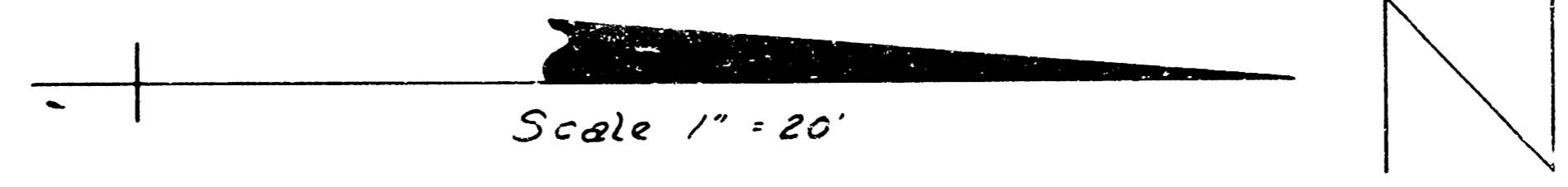


Cont. 8+00
 8+50
 9+00

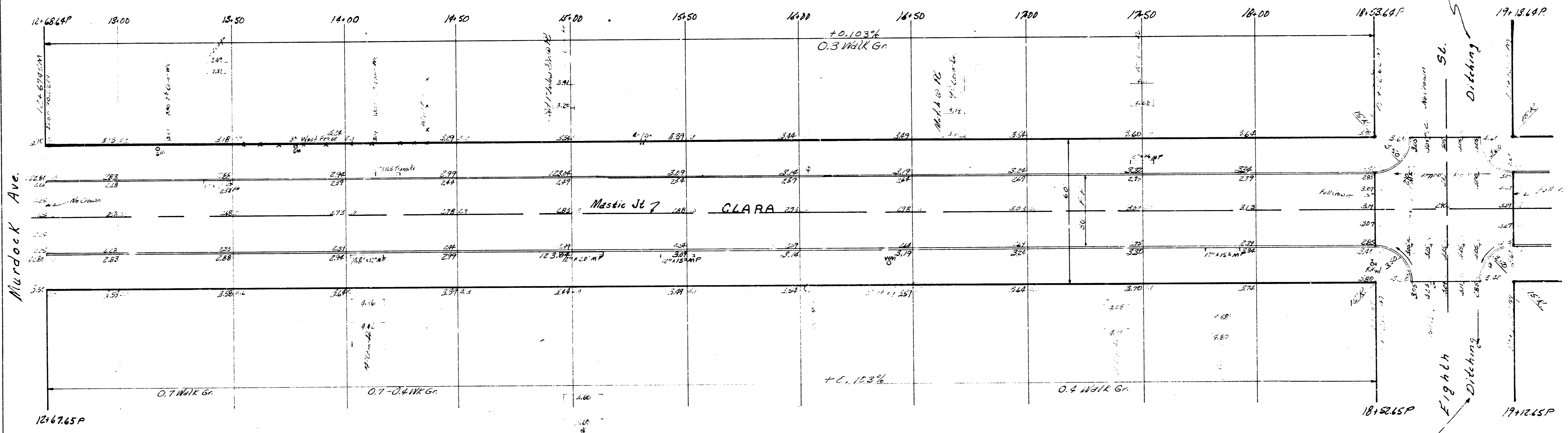
Elm St
 123.80

70

B.M. 12613 "M" in Muller Fire Hydrant SE Cor. Clara & 8th.

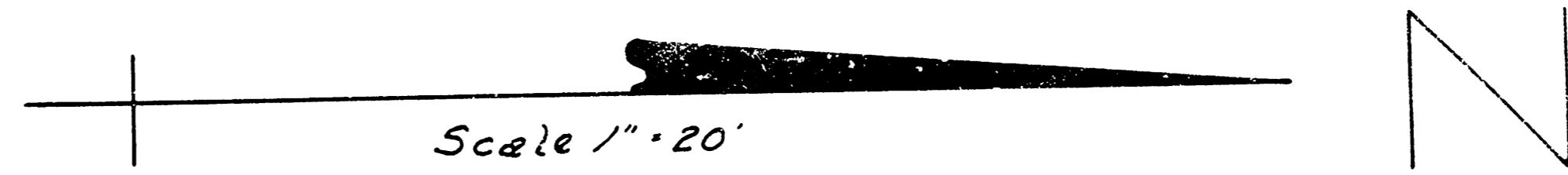


Murdock Ave.



See Sheet 7A
56
Ditching
See Sheet 7A
Fifth
Ditching

B.M. 126.08 1/4" Round Headed Bolt in W Face P.Pole S.E. Cor Clara & 9th.



126.08
 126.08
 126.08
 126.08

