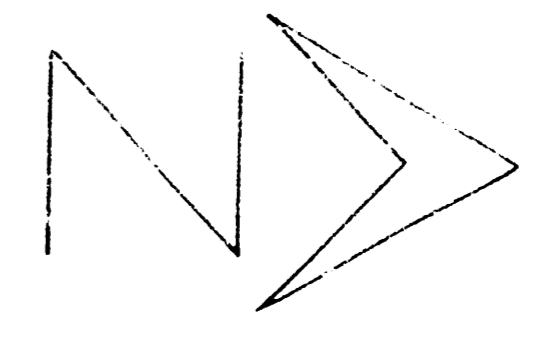


S.M. 10914 City St. on S.W. Cor. Maple & Glenn
 S.M. 11370 S.E. Cor. Bottom Can. Strip No. 16 229 S. Clarence
 S.M. 11170 "E" cut end of Walk South S. Clarence & S. Burton

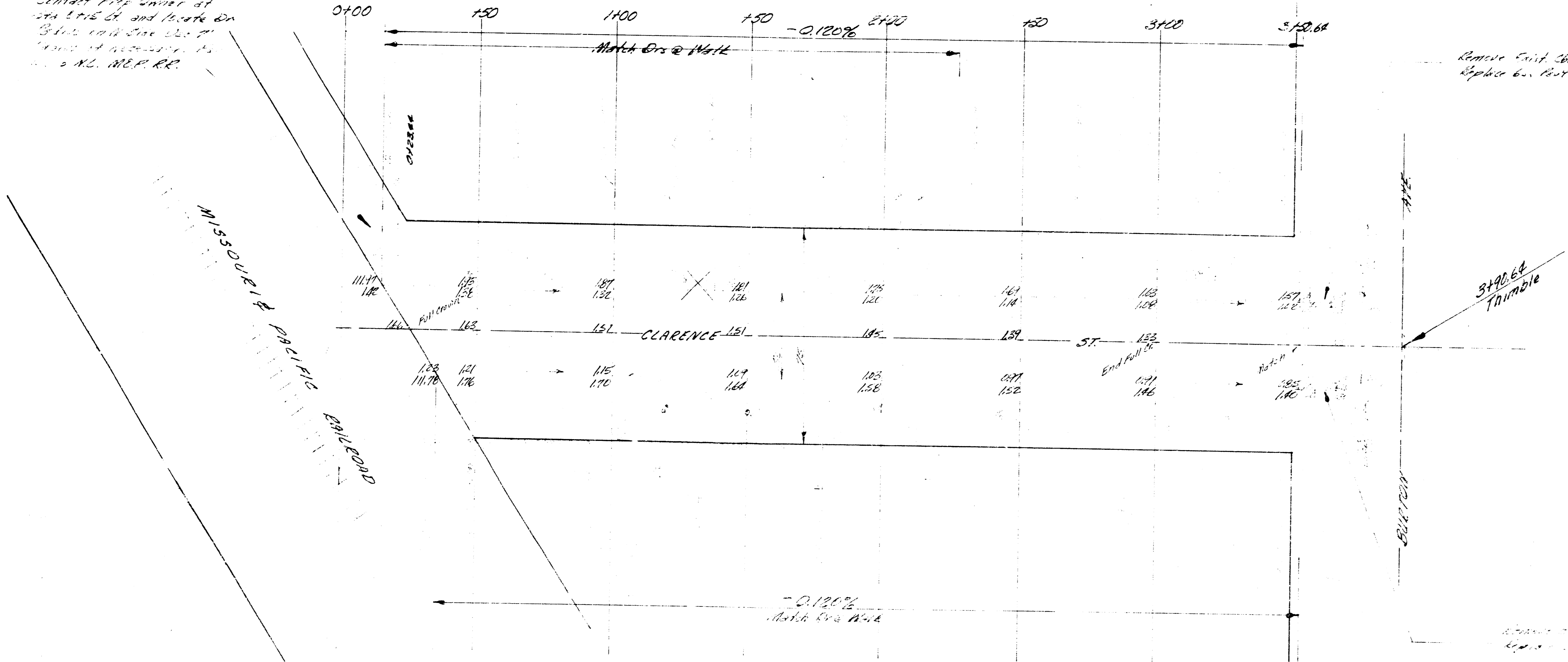
NOTE TO FIELD ENGR.

Contact Pipe Owner at
 1141 1142 St. and locate on
 3" line with 2" dia. 20' W
 of center of sidewalk to
 1142 S.W. REP. RE.

Any Drives Constructed from Sta 3150.0 to 3150.4
 will require the removal & replacement of the
 existing walk to a new Wall to T.S.B.



Scale 1" = 20'



Remove Curb 360.04
 Replace by 12" x 12" Sid. Ck

SHADE Triangle

Remove Curb 140.00
 Replace by 12" x 12" Sid. Ck

NOTE TO FIELD ENGR.

Check condition of all work
 at Drive Locations. Rem & Replace
 6" or if necessary

Excavation		
PROP	332.4 CU	CITY
	33.2 + 0.26	21.7 + 0.26
	365.6 C.Y. Total	15 C.Y. Total

1/2

20' x 10' x 10' ...
 2' x 2' x 2' ...
 2' x 2' x 2' ...
 2' x 2' x 2' ...