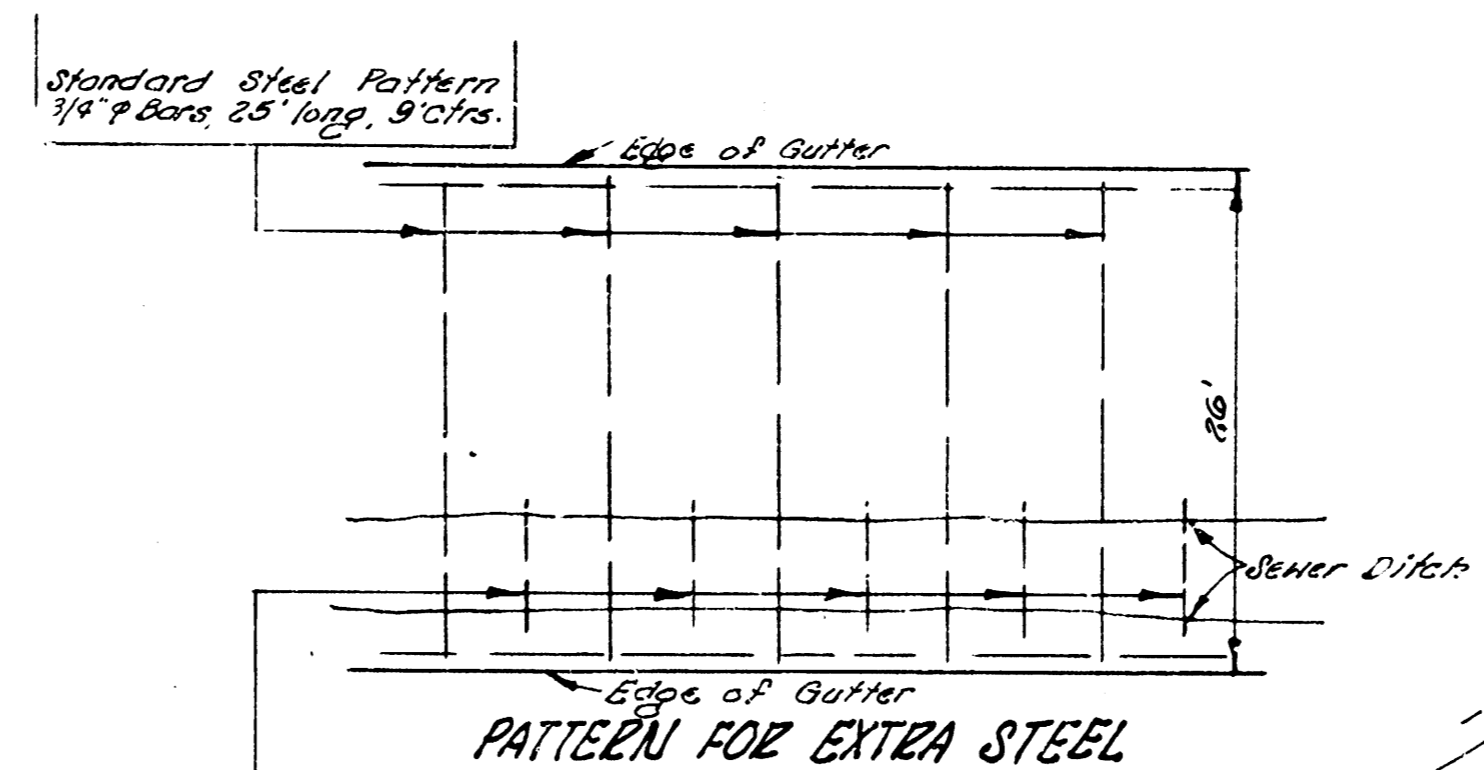


NOTE: TO CONTRACTOR
 48" water supply line use extreme care.
 No heavy equipment to be used in this area.

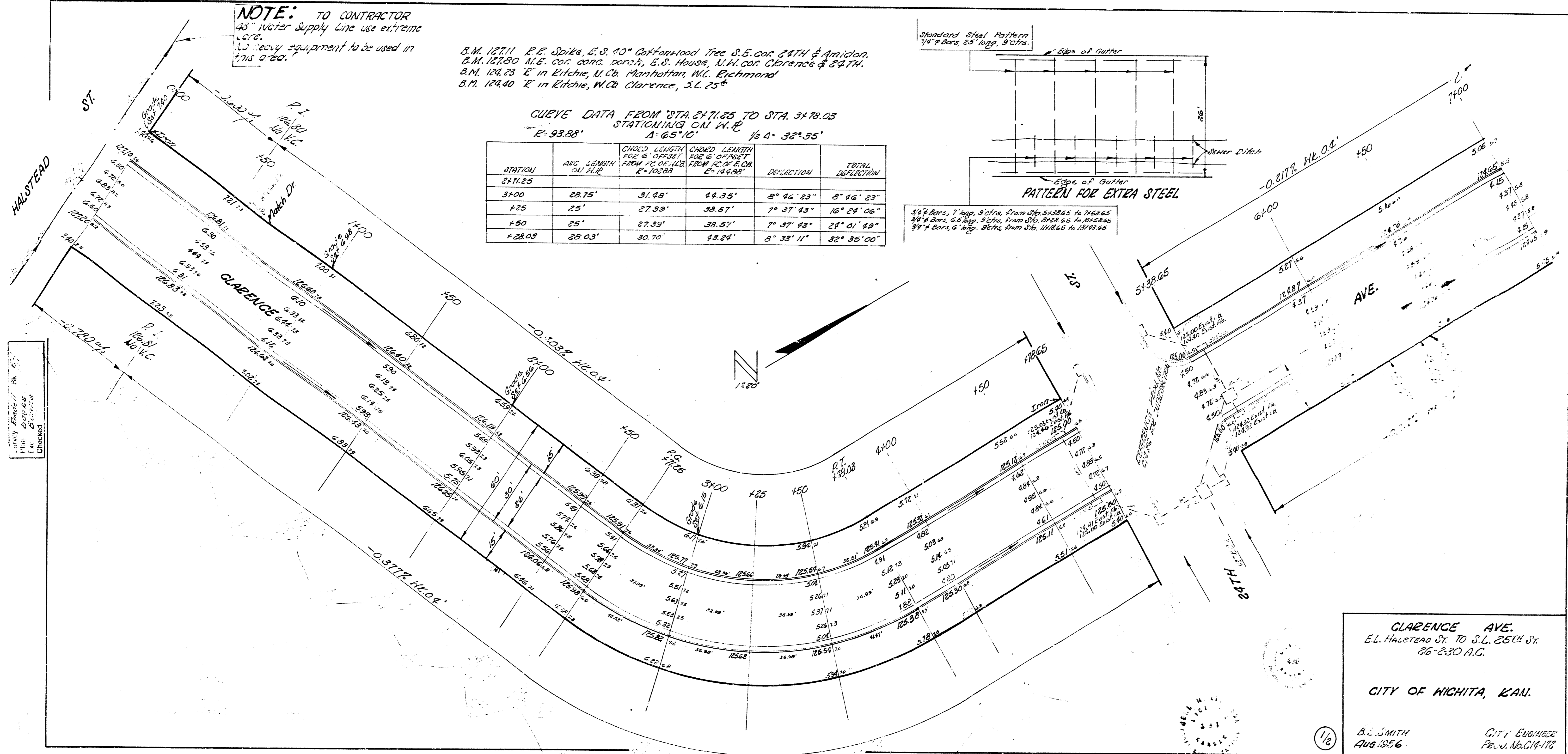
B.M. 12711 P.E. Spike, E.S. 10" Cottonwood Tree S.E. cor. 24TH & Arvidson.
 B.M. 12780 N.E. cor. cor. cor. E.S. House, N.W. cor. Clarence & 54TH.
 B.M. 12423 'E' in Kitchie, W.C. Manhattan, W.L. Richmond
 B.M. 12440 'E' in Kitchie, W.C. Clarence, S.L. 25'

CURVE DATA FROM STA 2471.25 TO STA 3179.03
 STATIONING ON N.E. 1/4 4' 30" 55"
 R=93.88' A=65°10'

STATION	ARC LENGTH ON N.E.	CHORD LENGTH FROM P.C. OF CURVE	CHORD LENGTH FROM P.O.B. OF CURVE	DEFLECTION	TOTAL DEFLECTION
2471.25					
3100	28.75'	31.08'	44.35'	8° 42' 23"	8° 42' 23"
325	25'	27.39'	38.57'	7° 37' 43"	16° 24' 06"
450	25'	27.39'	38.57'	7° 37' 43"	29° 01' 49"
428.03	25.03'	30.70'	48.24'	8° 33' 11"	32° 35' 00"



3/4" Bars, 2' long, 3' apart from Sta. 5138.65 to 7168.65
 3/4" Bars, 6' long, 3' apart from Sta. 8128.65 to 8128.65
 3/4" Bars, 6' long, 3' apart from Sta. 11188.65 to 13148.65



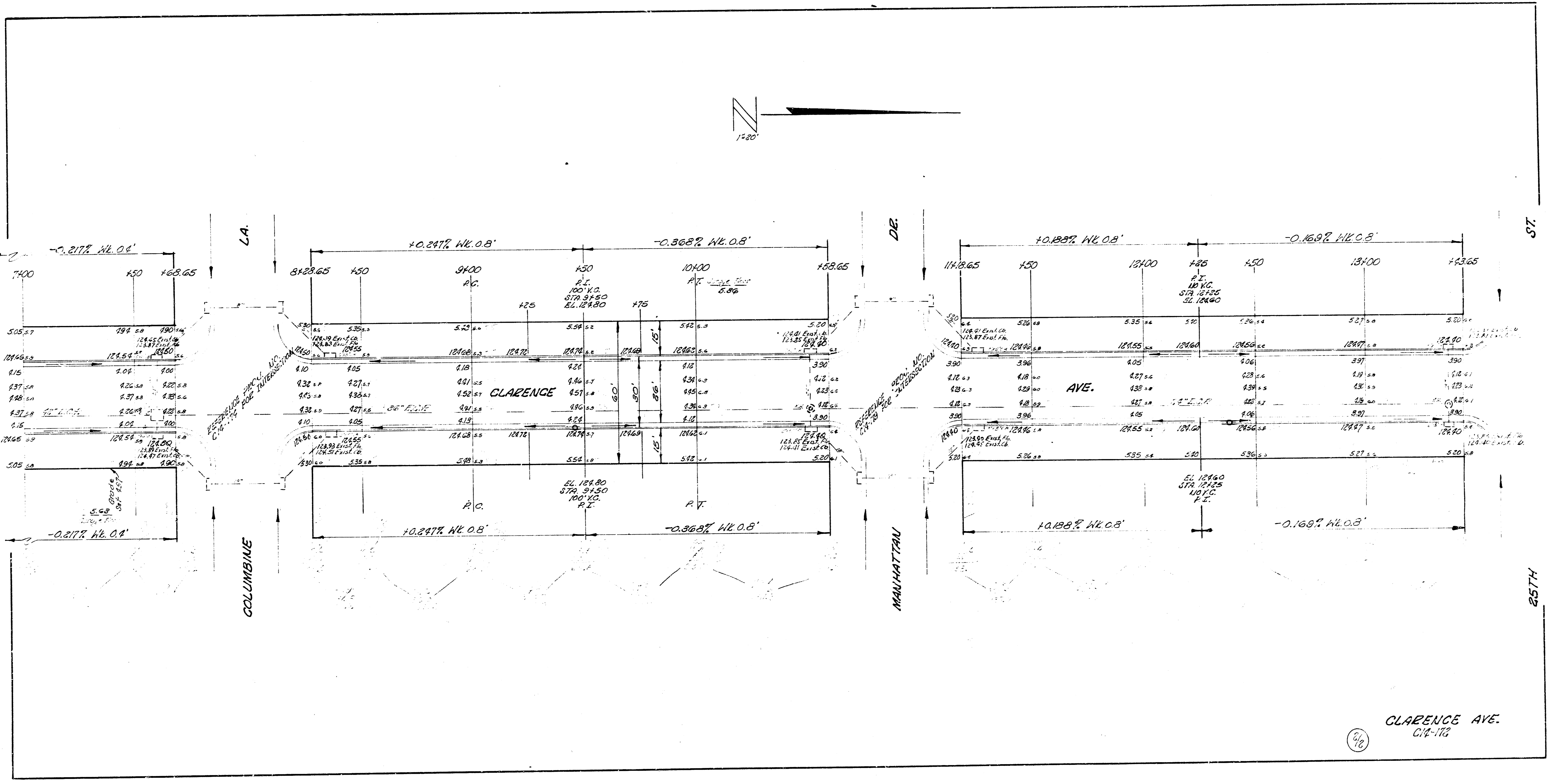
Checked
 Drawn
 Plotted
 City Engineer

CLARENCE AVE.
 E.L. HALSTEAD ST. TO S.L. 25TH ST.
 26-330 A.C.

CITY OF WICHITA, KAN.

B.S. SMITH
 Aug. 1956

CITY ENGINEER
 Per. No. C18-172



CLARENCE AVE.
C14-112