

CLARENCE CIRCLE

N. L. McDONNALL ADDN. TO & INCLD. CUL-DE-SAC

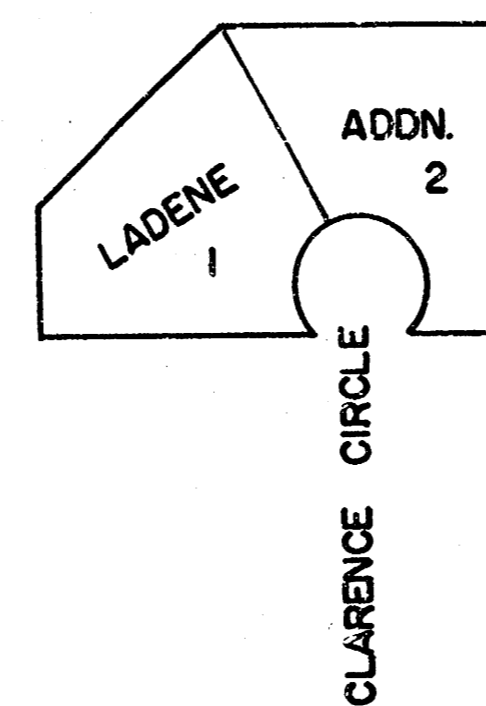
CITY OF WICHITA, KANSAS

DEPT. OF ENGINEERING

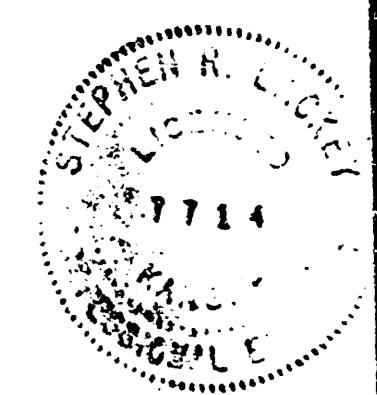
R. W. BRUGGEMAN

DIRECTOR OF ENGINEERING/CITY ENGINEER

DATE: PROJ. NO. 472 76 245 80330 000 000001

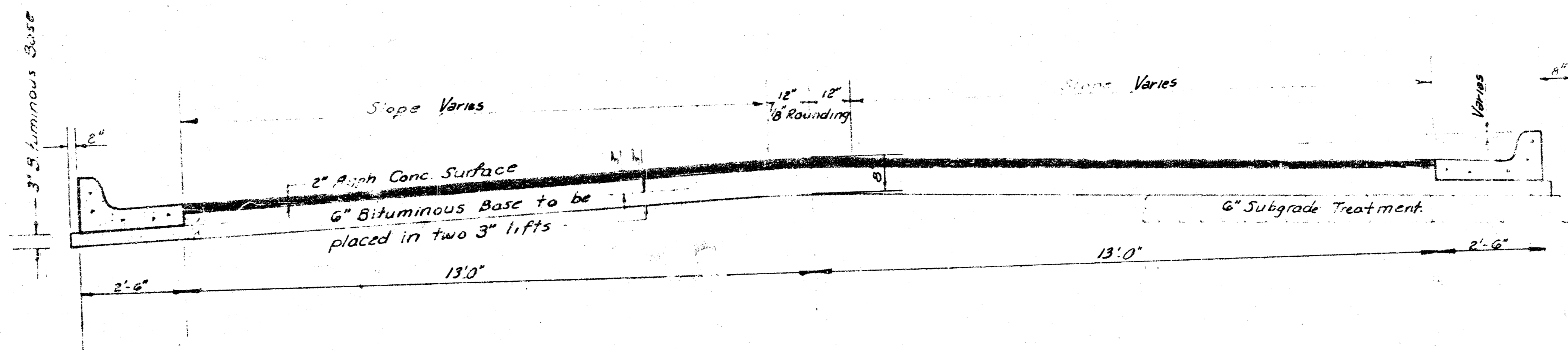


Manipulation = 480 S.Y.



REVISED 11-2-81

CLARENCE CIRCLE
 N. L. McDONNALL ADDN. TO & INCLD. CUL-DE-SAC

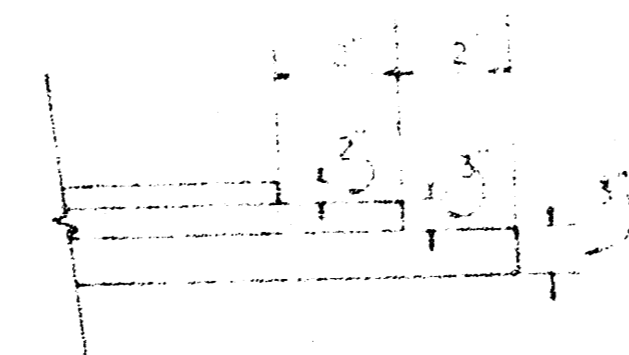


TYPICAL SECTION

31' ASPHALTIC CONCRETE PAVEMENT WITH BITUMINOUS BASE

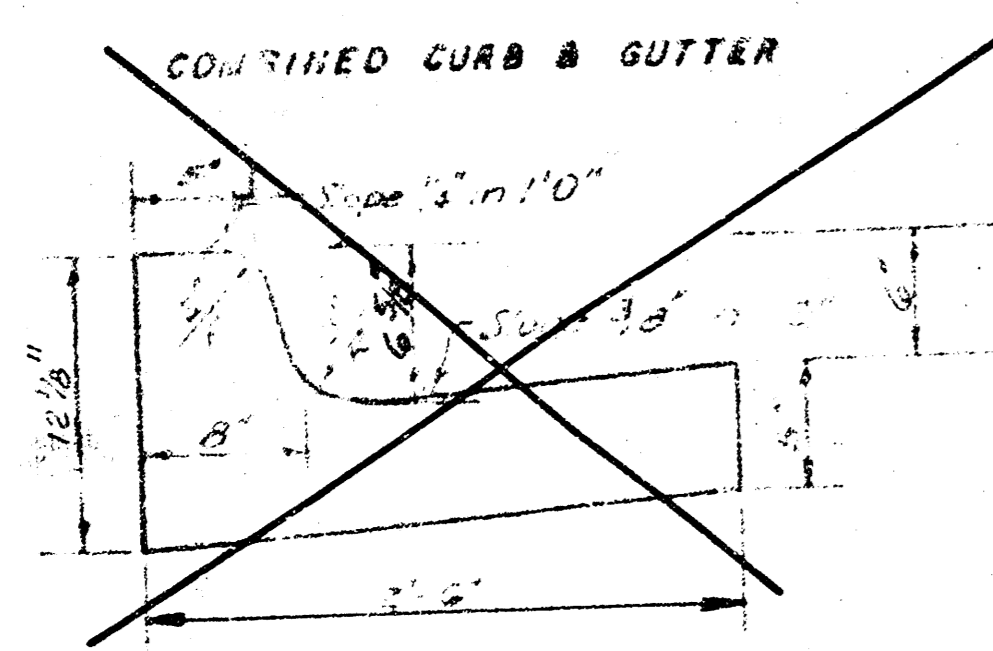
A TACK COAT OF EMULSIFIED ASPHALT (SS-1H) SHALL BE APPLIED AT AN APPROXIMATE RATE 0.05 GALLONS PER SQ YD BETWEEN LIFTS OF ASPHALTIC MATERIALS WHEN ORDERED BY THE ENGINEER. TACK COAT WILL NOT BE PAID FOR DIRECTLY AND SHALL BE CONSIDERED AS SUBSIDIARY TO PRICE BID FOR ASPHALTIC PAVEMENT. BITUMINOUS BASE AND ASPHALTIC CONCRETE WEARING SURFACE SHALL BE PLACED WITH A LAYDOWN MACHINE HAVING AUTOMATIC CONTROLS FOR CROWN AND GRADE. CONSTRUCTION JOINTS IN EACH LIFT SHALL BE STAGGERED A MINIMUM DISTANCE OF 1' WITH JOINTS IN PRECEDING LIFTS AND PLACED SUCH THAT A JOINT WILL BE CONSTRUCTED ON THE CENTERLINE IN THE TOP LIFT.

DETAIL OF TRANSVERSE CONSTRUCTION JOINTS

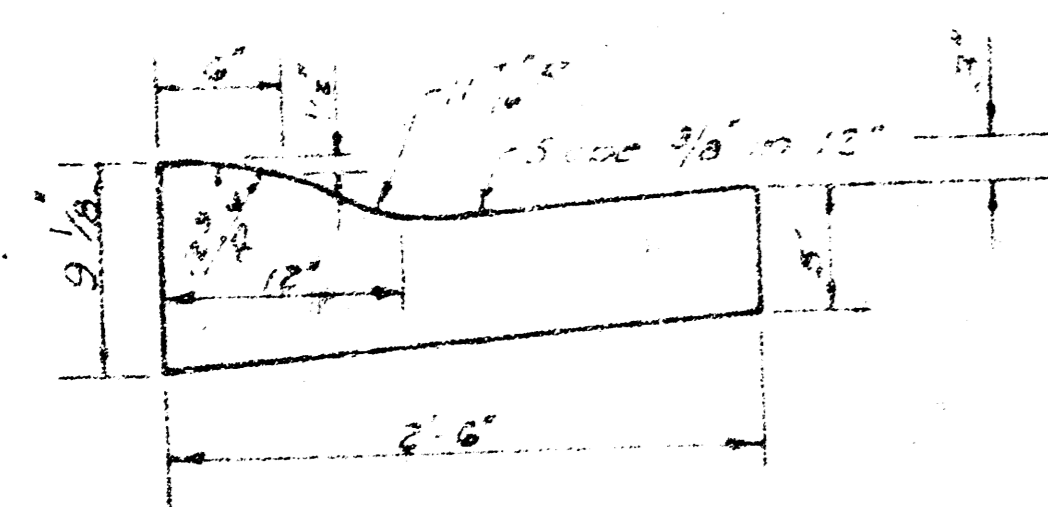


TRANSVERSE CONSTRUCTION JOINTS SHALL BE CONSTRUCTED IN FLEXIBLE BASE PAVEMENTS AT LOCATIONS WHERE PAVEMENT TEMPORARILY ENDS TO FACILITATE FUTURE PAVEMENT CONSTRUCTION AS SHOWN BY DETAIL. THE COST OF CONSTRUCTING THE TRANSVERSE CONSTRUCTION JOINTS SHALL NOT BE MEASURED OR PAID FOR DIRECTLY BUT SHALL BE INCLUDED IN THE B/D PRICE FOR SQUARE YARDS OF ASPHALTIC CONCRETE PAVEMENT.

The 31' width shown between the curb and the gutter shall be divided into 8" curb, 6" gutter, 6" base, 6" bituminous base, and 6" subgrade treatment and shall be placed on top of 3" Bituminous Base.



ROLL TYPE CURB & GUTTER



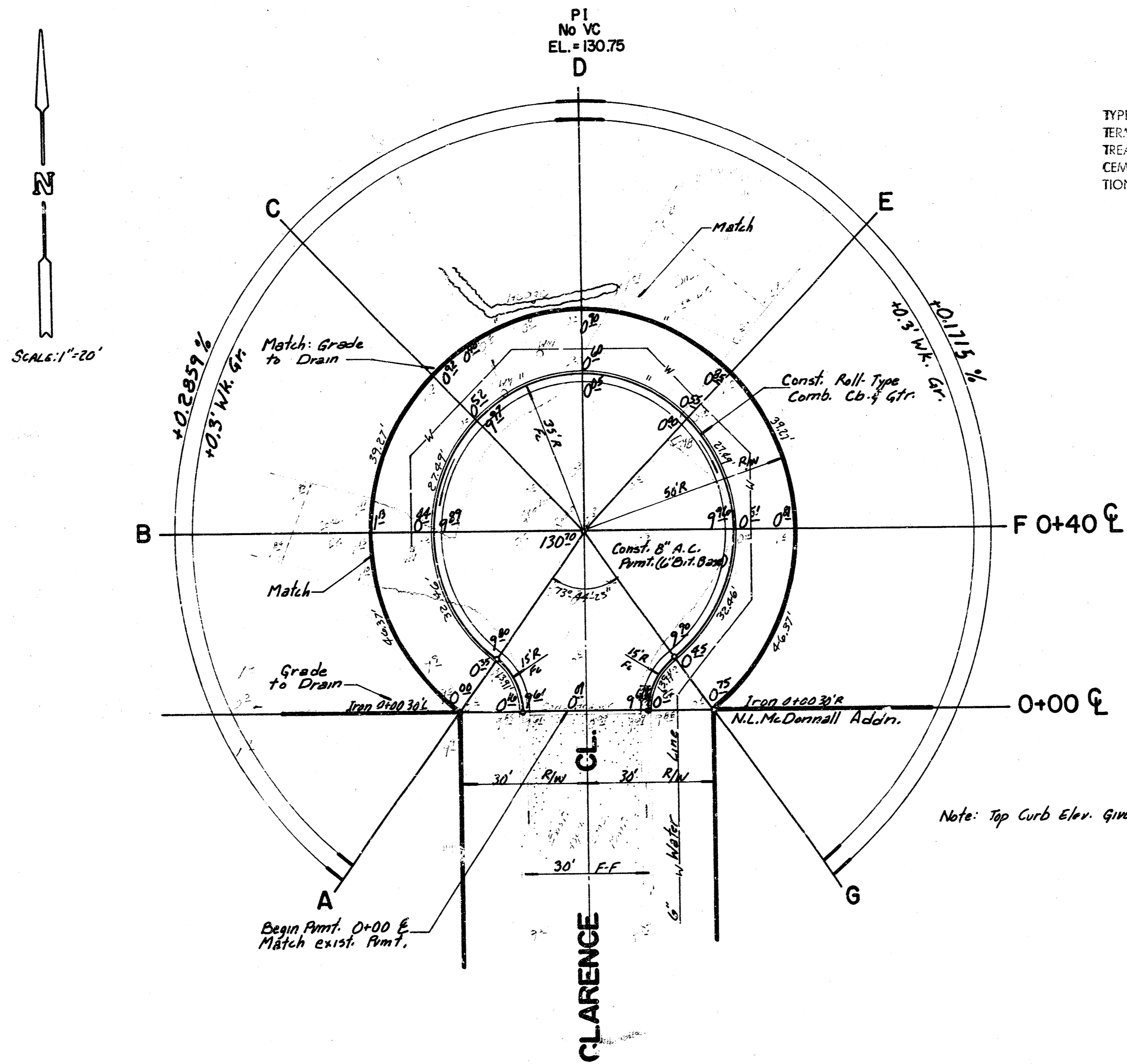
CITY OF WICHITA KANSAS
 DEPARTMENT OF ENGINEERING

R. W. BRUGGEMAN
 DIRECTOR OF ENGINEERING/CITY ENGINEER

DATE _____ Proj No 472 76 245 80330 000 000 001

Surveyed by M.G.B.
 Plot MLAG
 Date 11/2/81

BM = 132.83 ~ S.W. Cor. Bottom Conc. Step House No. 3334 N. Clarence.
 BM = 129.78 ~ "a" T.P. Cb. N. Side 31' 5" N. @ E. Ref. on E. Side
 Clarence.



SUB-GRADE
 TYPE OF SUB-GRADE TREATMENT SHALL BE DETERMINED BY THE FIELD ENGINEER. SUB-GRADE TREATMENT MAY CONSIST OF LIME TREATMENT, CEMENT TREATMENT, SUB-GRADE MODIFICATION, OR ANY COMBINATION OF THESE.

THE CONTRACTOR SHALL BE RESPONSIBLE FOR PRESERVING PROPERTY LINES. THE CONTRACTOR SHALL BE REQUIRED TO RE-ESTABLISH ANY PROPERTY LINES WHICH ARE DAMAGED OR DESTROYED BY HIS CONSTRUCTION OPERATIONS. SUCH RE-ESTABLISHMENT SHALL BE SUPERVISED BY A LICENSED LAND SURVEYOR OR A LICENSED PROFESSIONAL ENGINEER IN ACCORDANCE WITH STATE LAWS.

Note: Top Curb Elev. Given Are for Full Height Curb.

EARTHWORK EXCAVATION

X-SECTION	130.4 C.Y.
10%	13.0 C.Y.
TOTAL	143.4 C.Y.

CLARENCE CIRCLE
 472 76 245 B0330 000 000 001

Revised 11-2-81

3/4

FILMED FROM THE BEST

