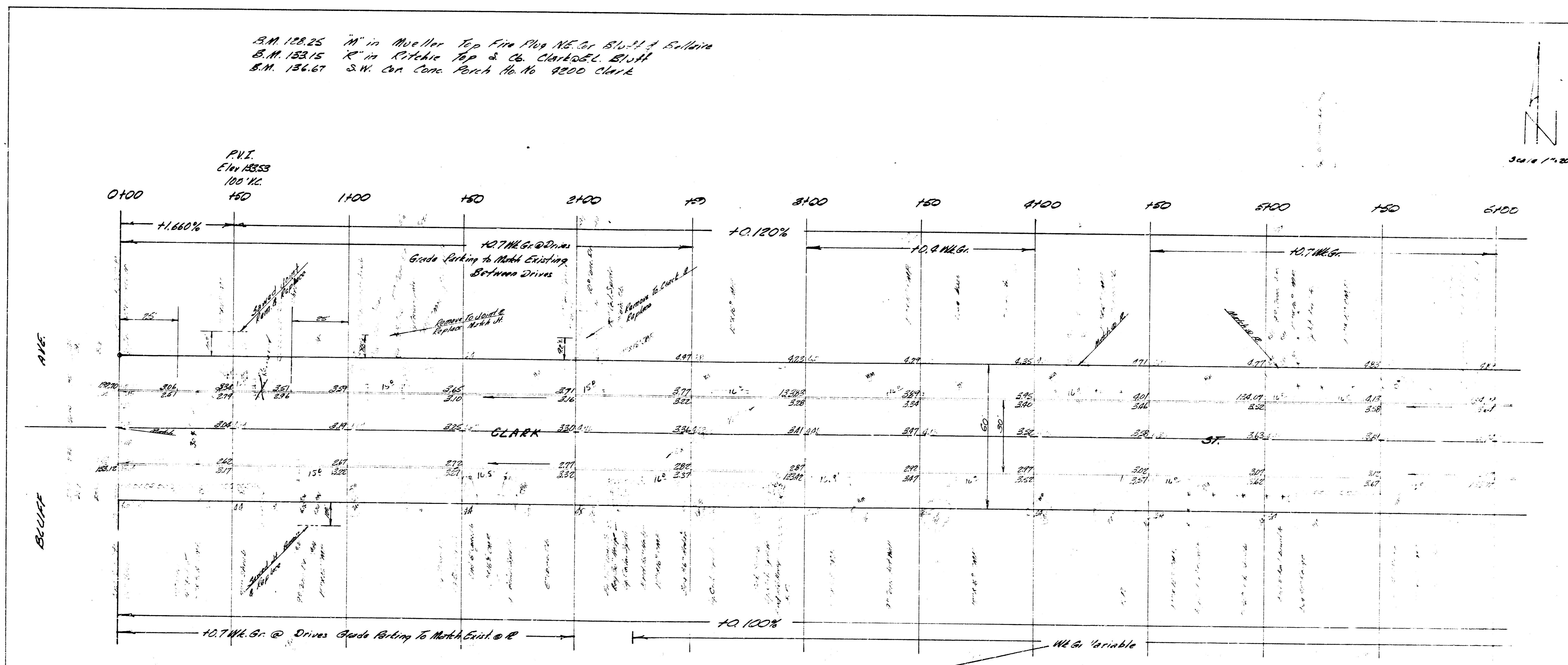
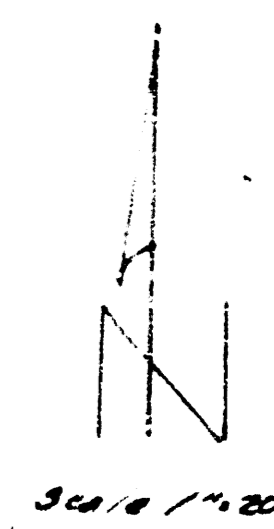


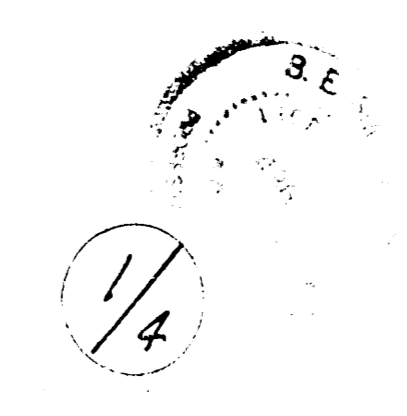
B.M. 128.25 "M" in Mueller Top Fire Plug NE. Cr. Bluff & E. Bluff
 B.M. 123.15 "K" in Ritchie Top & Co. Clark & E. Bluff
 B.M. 136.67 S.W. Cor. Conc. Porch No. 16 9200 Clark



Check in Jansen
 DATE
 D.E.B.

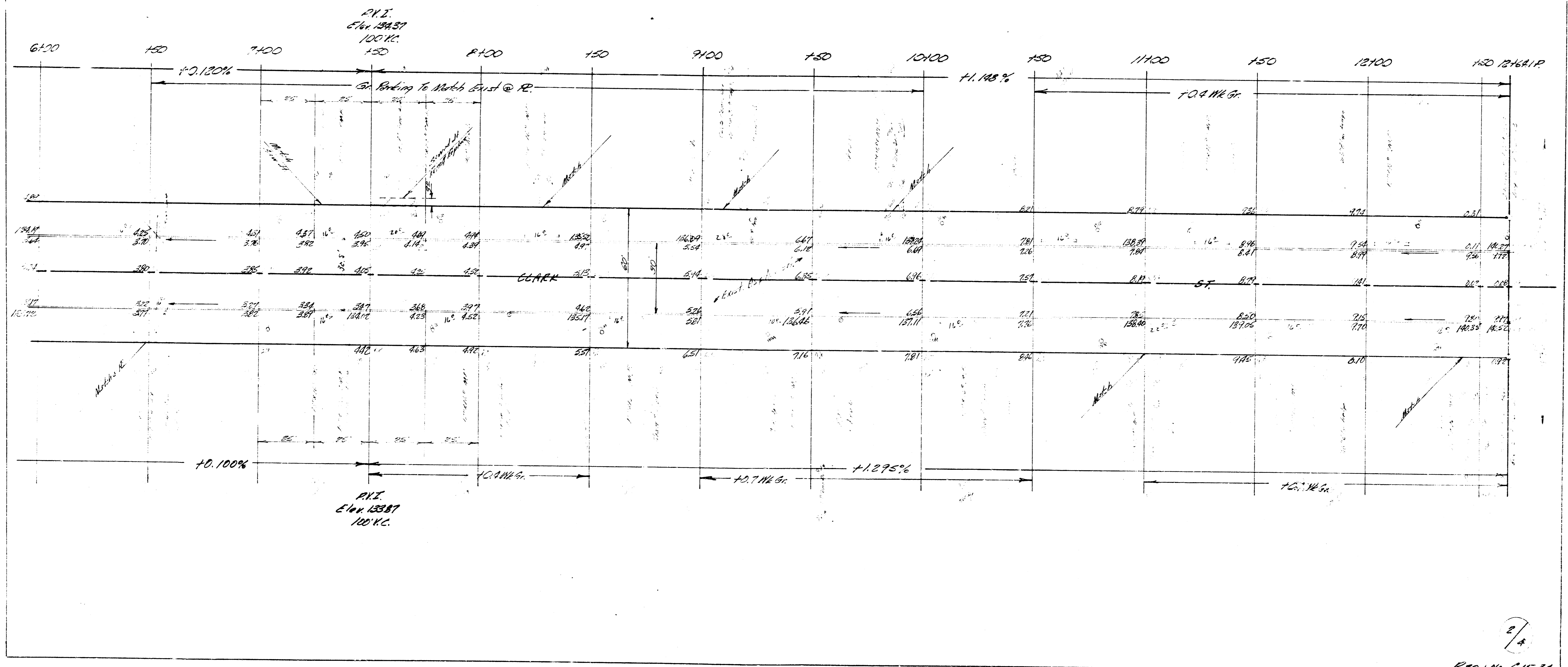
Excavation
 Prop
 21746 CY
 212.5 +10%
 23921 CY Total
 NOTE The Volume of Top Surf. Removed
 is not deducted from Excav. Quant.

NOTE:
 1. Gr. May be varied to match Exst. Drives
 Between Sta 2+25 to Sta 7+50
 If Desired by Owners.
 No Drive to be set below Top Curb.



CLARK ST
 EL BLUFF TO W. CRESTWAY
 30' CONC. & C.B.
 CITY OF WICHITA, KANSAS
 B.E. SMITH CITY ENGINEER
 DATE FROM NO. C15-34

B.M. 137.10 S.E. Cor. Conc. Slab. Prop. No. 4340 Clark
 B.M. 140.50 "X" Cut Top S. Ch. Clark N. End Radius S.W. Cor. Clark & Crestway



2/4
 PROJ. NO. C15-34