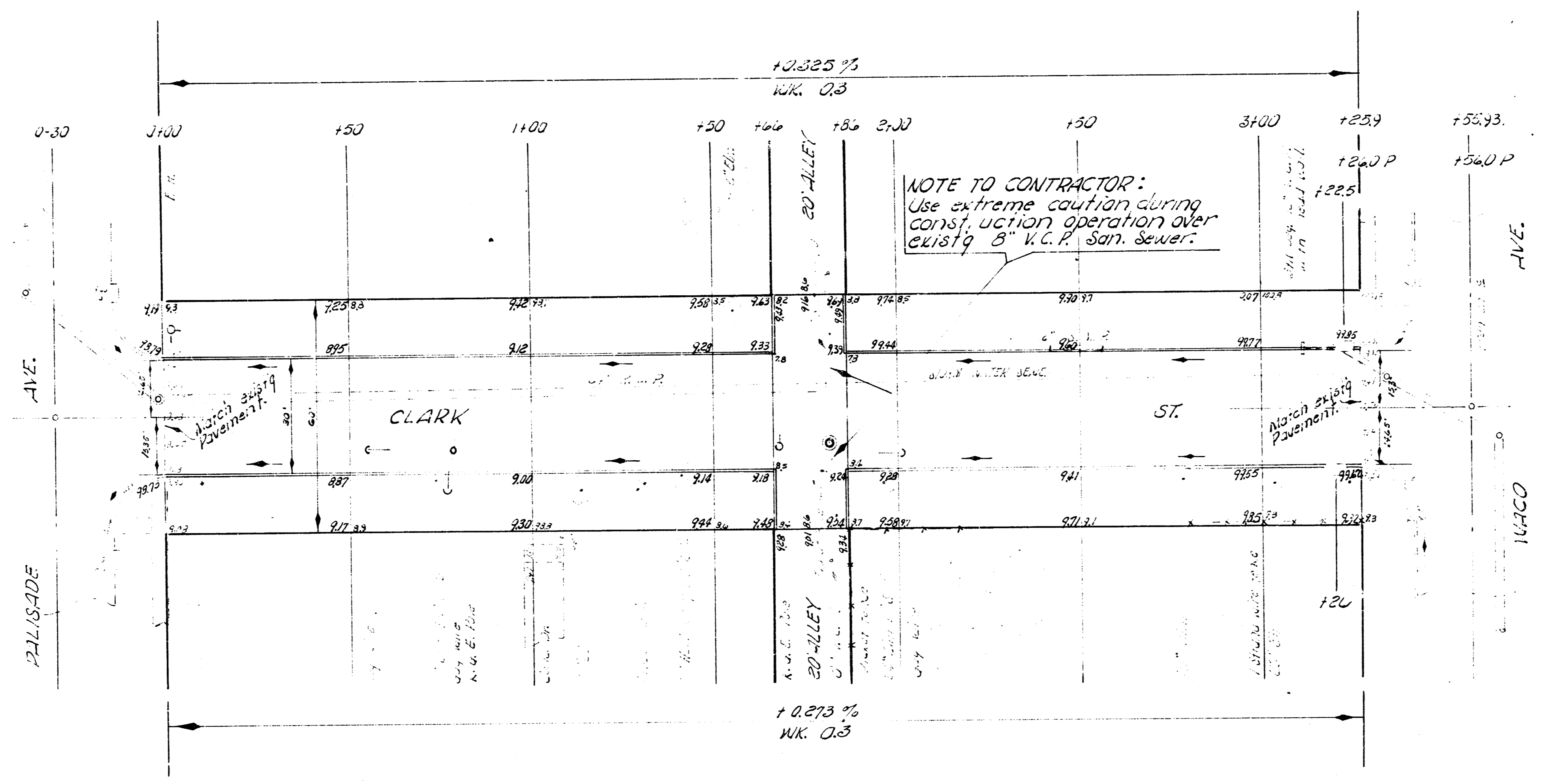


B.M. 99.70 Iron in Thim. & Waco and Clark.
 B.M. 101.70 Iron in Thim. & Water and Clark.
 Base line and Stationing on & Clark St.



EARTH WORK		GRAND TOTALS			
EXCAVATION		FILL		CONTRACTION	
CITY	PROP.	CITY	PROP.		
2.6	2.6	2.3	15.5		
0.8	0.8	0.9	4.6		
2.9	95.2	12.2	50.1		cu. yds.

NOTICE TO CONTRACTOR:
 All entrance pipes are to be disposed of in accordance with instructions from the City dirt inspector.



CLARK ST.
 EL PALISADE TO EL WACO
 30" CONC. 5' CB.
 CITY OF WICHITA, KANSAS
 B. E. SMITH CITY ENGINEER
 OCT. 1958 PROJ. NO. CB-139