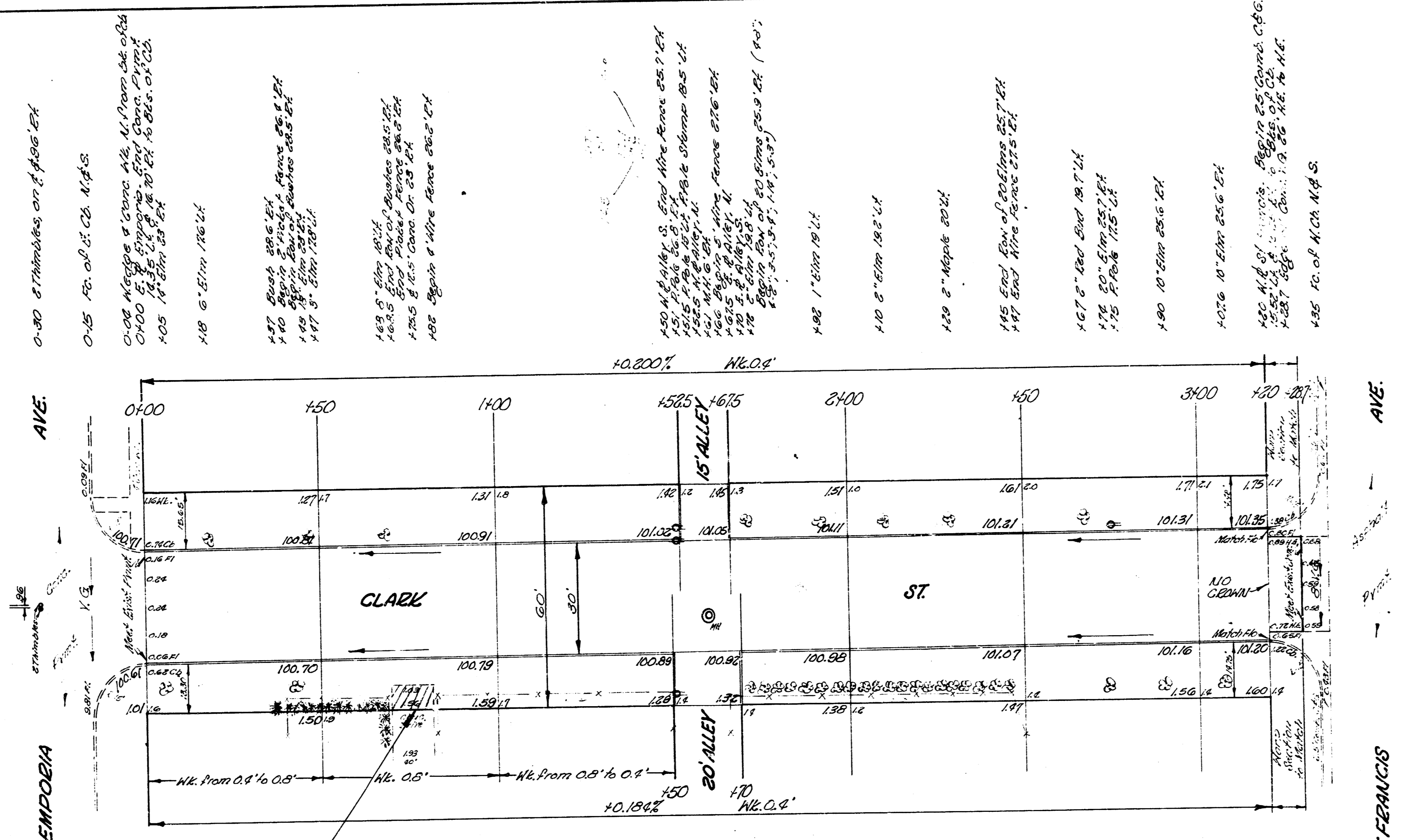


21.10237 N.E. cor. Lemur St., Houses # 2055 S. Emporia.  
 Starting up on E



NOTE:  
 Remove 1' of 12.5' Conc. Dr.  
 & Match same at S. E.  
 Drive Grade was not set  
 by City Engineer's Office

Survey 21.10237  
 Plan 2055  
 Checked 5/1/54



CLARK ST  
 E.L. Emporia Ave. to W.L. St. Francis Ave.  
 30' CONC. & C.B.  
 CITY OF WICHITA, KANS.  
 B.E. SMITH  
 May 1954  
 CITY ENGINEER  
 Rev. 16.04-53

