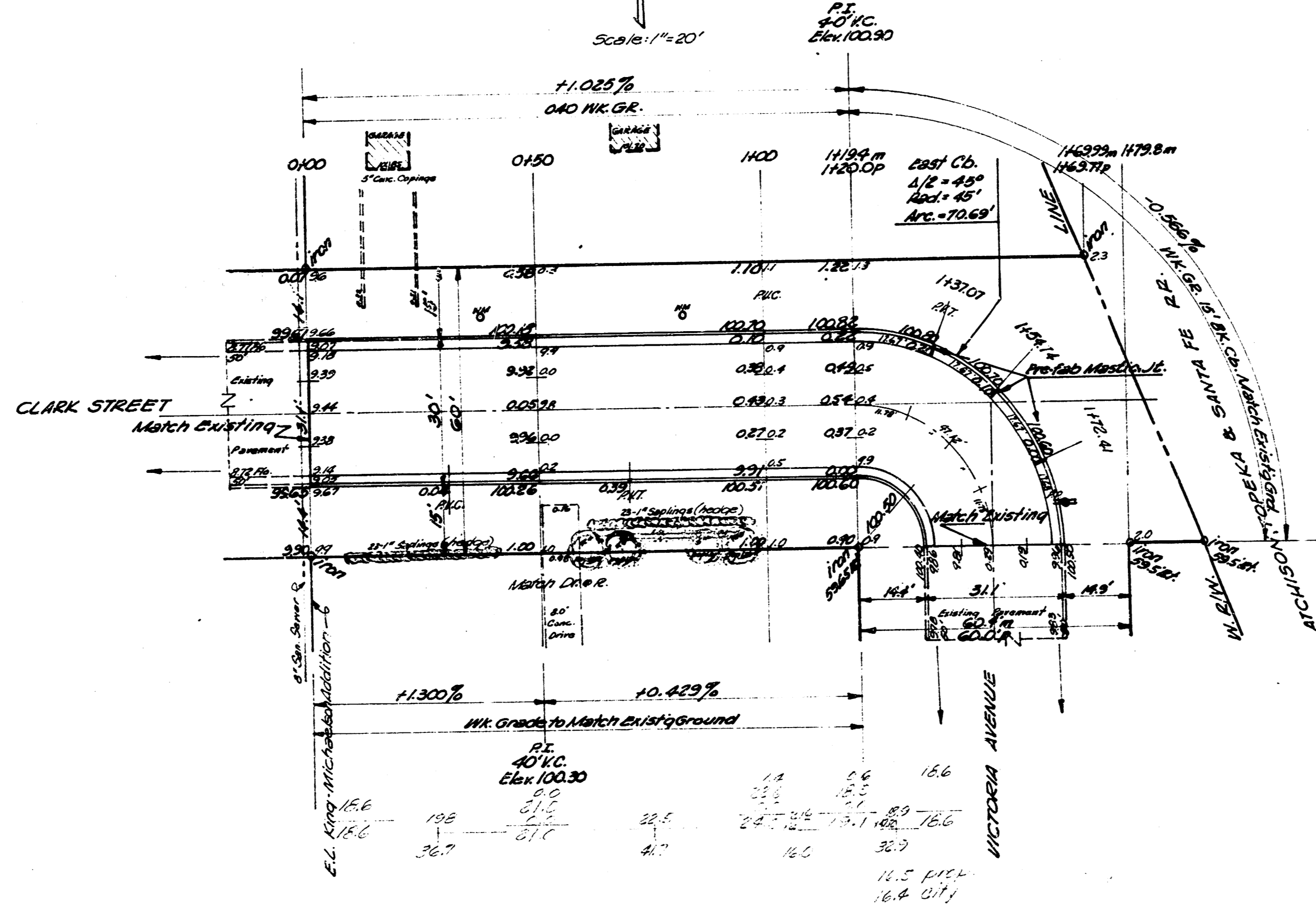


B.M. 100.49 NE Cor. Cond. For Hqs. S.W. Cor. Victoria & Blake
 B.M. 101.57 S.E. Cor. Cond. Strip 40s. 15' 20' E. Clark
 Base Line = North E. Clark Street.

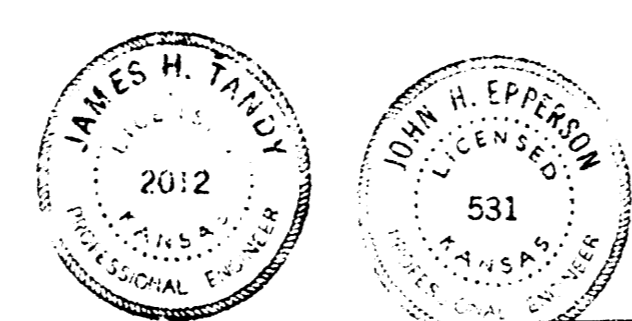
Scale 1" = 20'
 N



Surveyed by B.E. Smith
 5-15-59

EXCAVATION POINTS

PROP	21.1
12.5	12.4
18.1	16.5
18.0	18.0



CLARK STREET
 EL. KING MICHAELSON'S 3RD - EL. VICTORIA
 26'-2'-30" ASPH. CONC.
 CITY OF WICHITA, KANS.
 B.E. SMITH CITY ENGINEER
 DATE: June 1, 59 PROJECT NO. C19-70