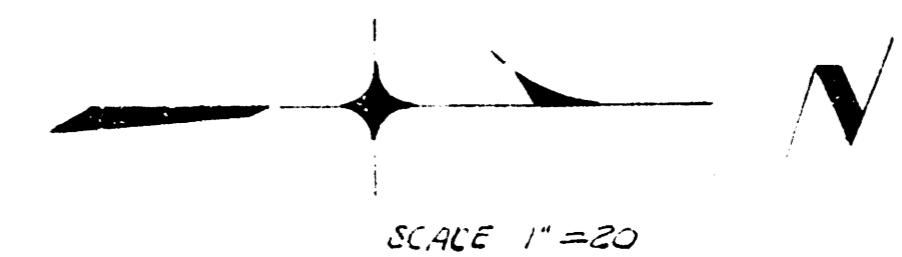


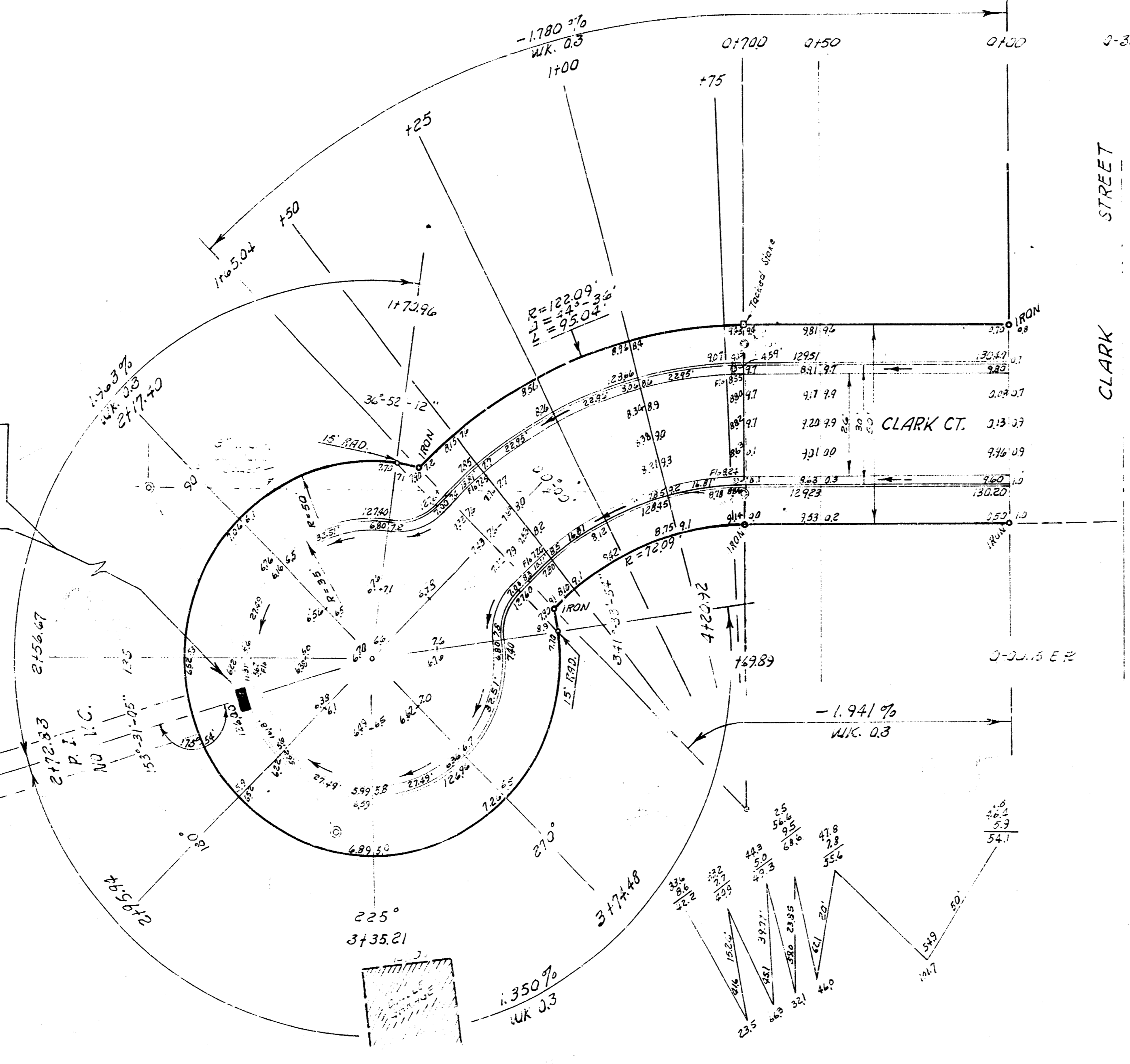
3. N. 133.26' old cont. cont. Parcel to # 3731 E. Clark.
 3. N. 10.83' old cont. Drive 3 to 2100 Brentwood 20' W. of it.
 Base-line of stationing on West 1/2 of Clark Court.



NOTE:
 Install 1-2' x 5' inlet
 Field Eng. is to determine
 elevations and length of pipe.

EARTH WORK			
Excavation		Fill Construction	
Prop.	City	Prop.	City
391.5	0.0	0.0	0.0
39.2			
430.8	0.0	0.0	0.0

CURVE DATA					
STA. 0+700.0 TO STA. 1+453.34					
STATIONING ON WEST PROPERTY LINE					
STATIONS	Arc length on W.P.	Chord length to nearest point Pc. of W.P.	Chord length to nearest point Pc. of E. 20'	DEFLECTIONS	TOTAL DEFLECTIONS
	$R = 122.09'$	$R = 120.09'$	$R = 74.09'$	$\Delta = 44^\circ - 36' - 30''$	
5+70	5.00'	4.82'	3.03'	1° 10' 24"	1° 10' 24"
5+75	5.00'	4.82'	3.03'	1° 10' 24"	2° 20' 48"
1+80	25.00'	24.54'	15.14'	5° 51' 37"	7° 02' 21"
1+85	25.00'	24.55'	15.15'	5° 51' 58"	12° 54' 19"
1+90	25.00'	24.54'	15.14'	5° 51' 37"	18° 46' 16"
1+95	15.04'	14.78'	9.12'	3° 31' 44"	22° 18' 00"



CLARK COURT
 SL CLARK ST. TO & INCLUDING CUL-DE-SAC
 26-2-30 A.C.
 CITY OF WICHITA, KANSAS
 B. E. SMITH CITY ENGINEER
 APRIL 1959, PROJ. NO. C19-4J

B. E. SMITH
 CIVIL ENGINEER
 WICHITA, KANSAS
 APRIL 1959

